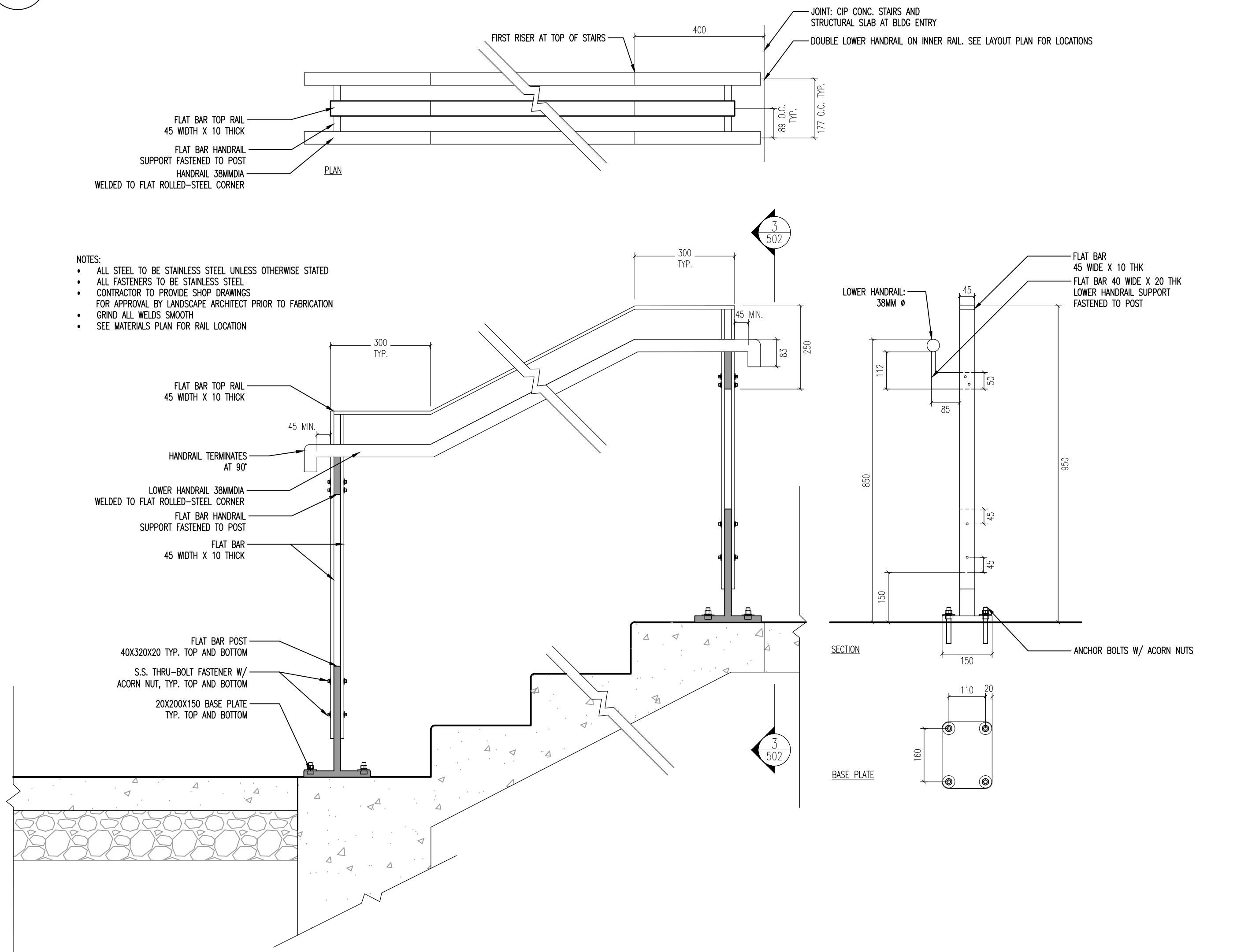


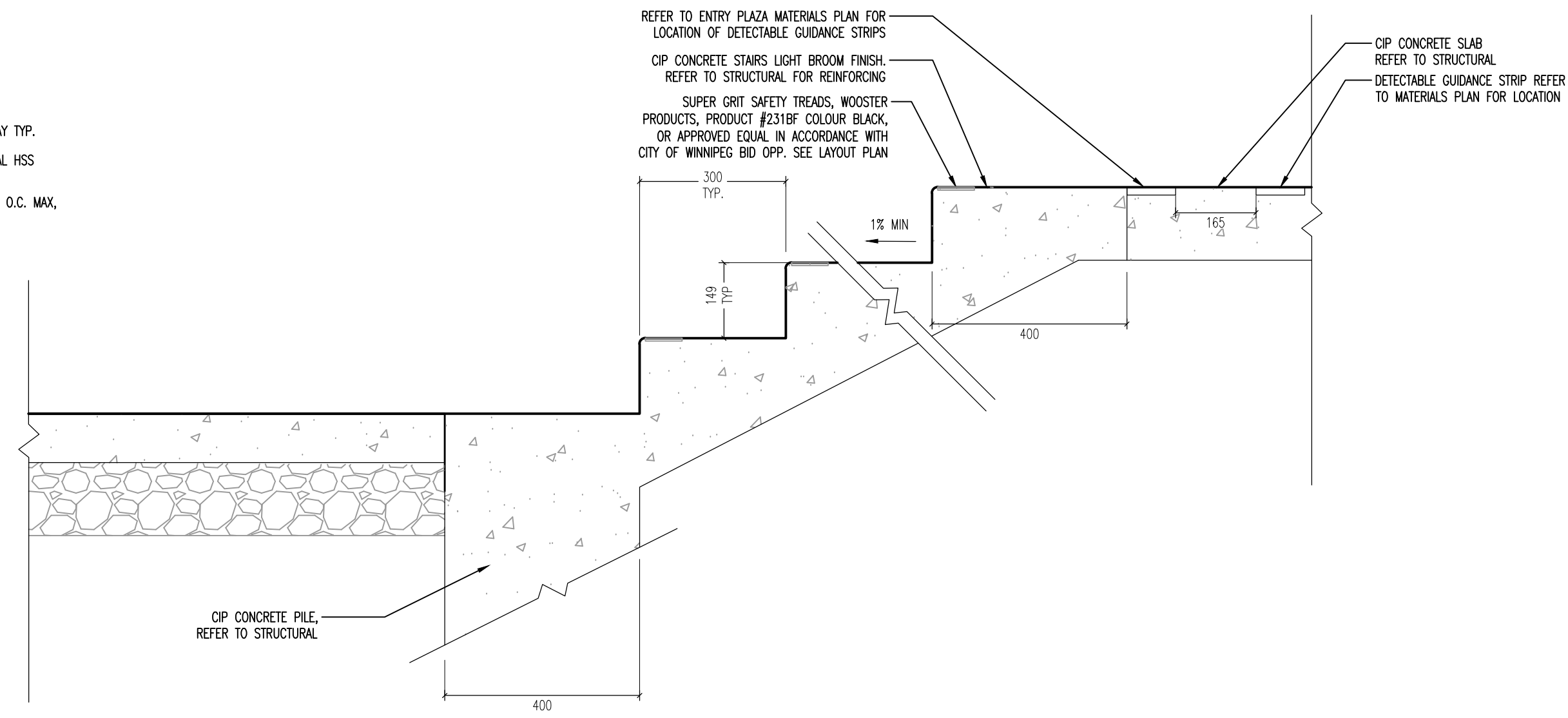
**1 CIP CONCRETE SLOPED WALK-WAY W/ BULL-RAIL & RAILING**

SCALE 1:10 (@24x36)



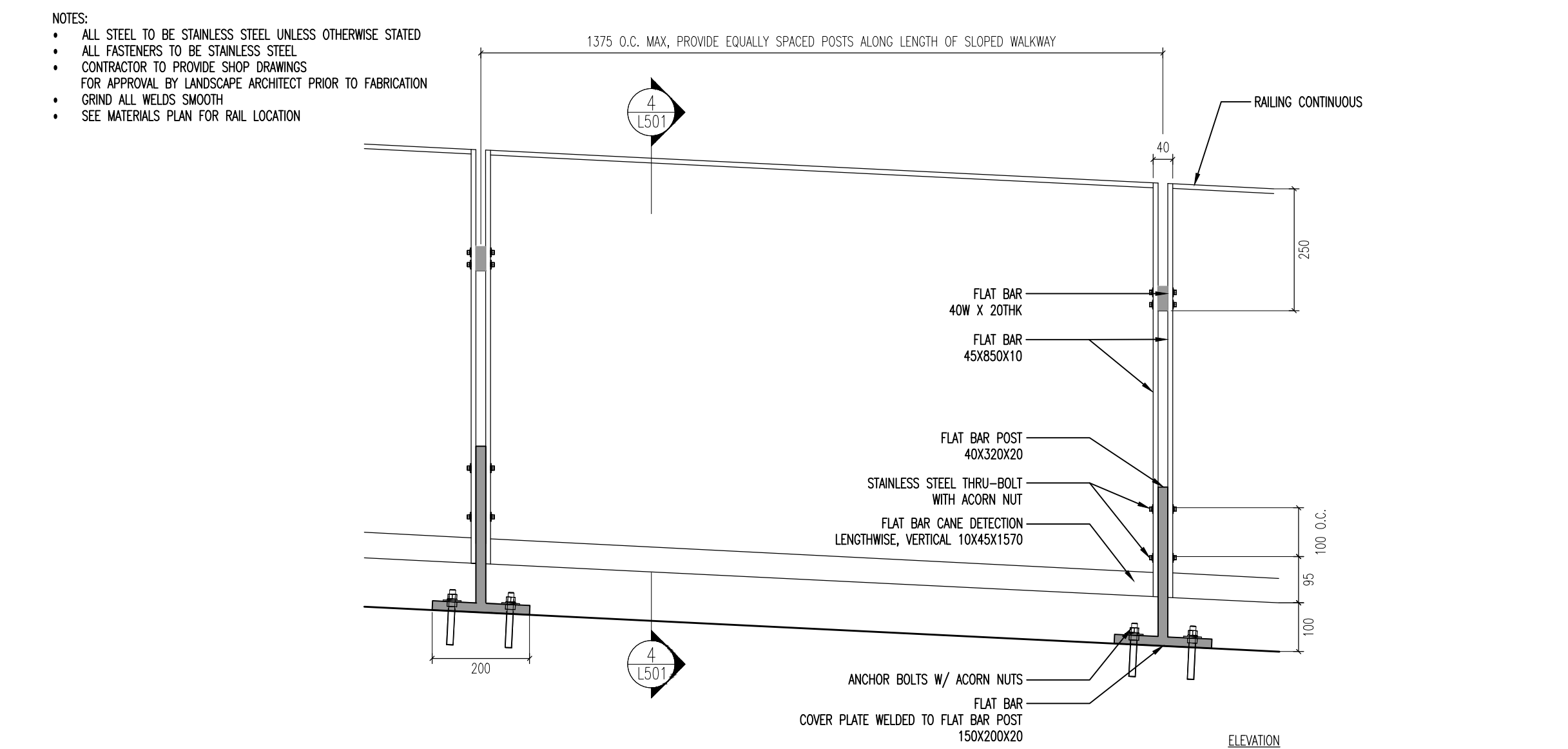
**3 S.S. HANDRAIL AT STAIRS**

SCALE 1:10 (@24x36)



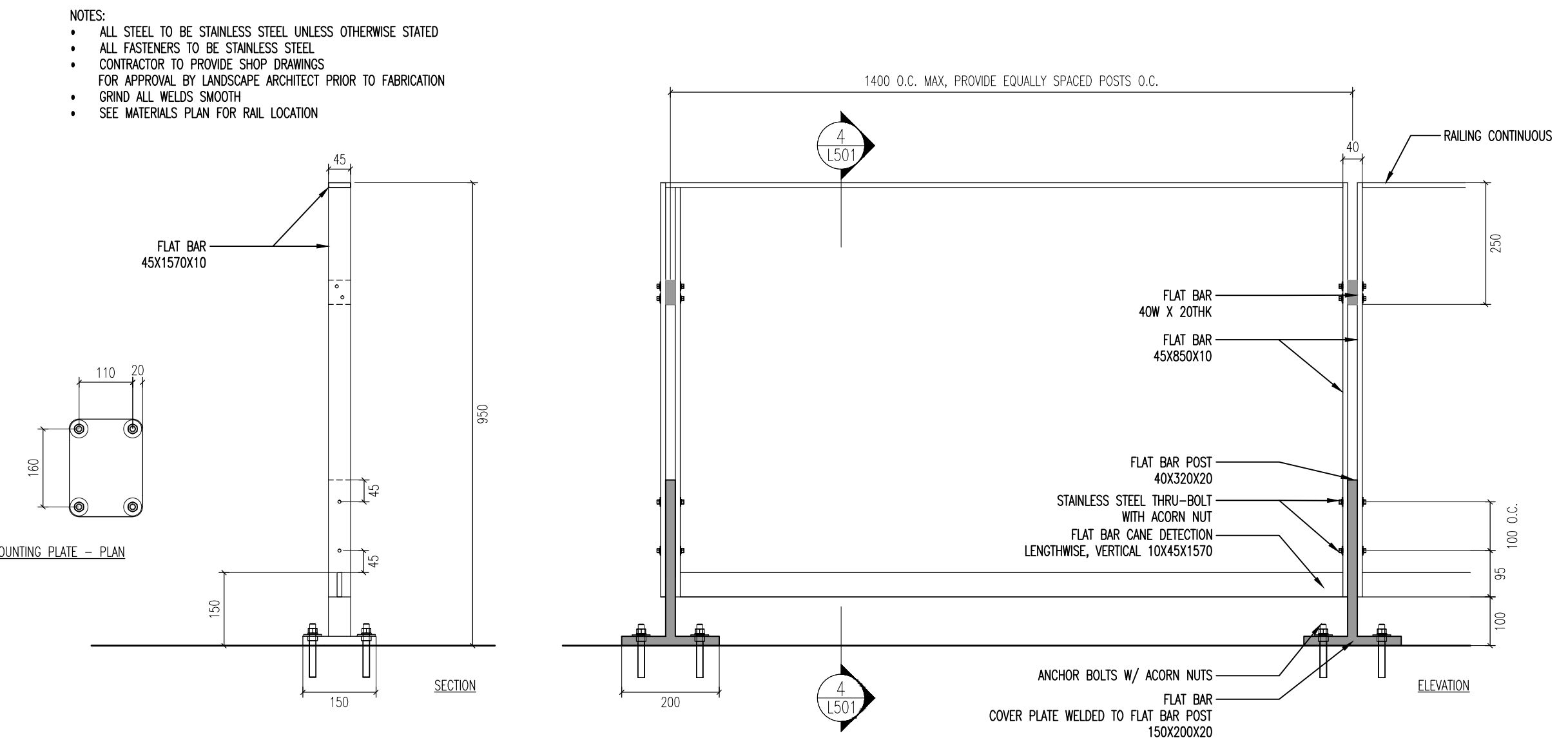
**2 CIP CONCRETE STAIRS**

SCALE 1:10 (@24x36)



**5 S.S. RAILING AT SLOPED WALKWAY**

SCALE 1:10 (@24x36)



**4 S.S. RAILING**

SCALE 1:10 (@24x36)

5	YY.MM.DD	-
4	YY.MM.DD	-
3	YY.MM.DD	-
2	YY.MM.DD	-
1	16.07.15	- ISSUED FOR CONSTRUCTION
No.	DATE	REVISION / ISSUANCE



Consultant  
**PLAIN PROJECTS**  
 LANDSCAPE ARCHITECTURE & ENVIRONMENTAL DESIGN  
 562 Academy Road / Winnipeg, MB / R3N 0E3  
 (204) 930 0272 / www.plainprojects.ca

Project  
**SEVEN OAKS POOL**

Sheet Title  
**DETAIL SECTIONS**

Project No. 645-2016  
 Date JULY 2016  
 Sheet **L501**