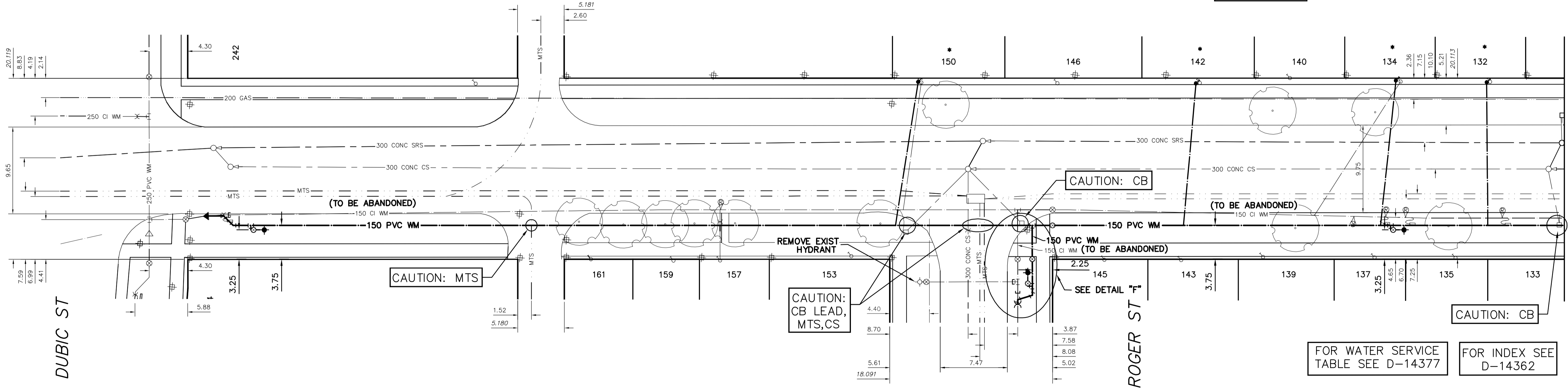


NOTE: CHAINAGES SHOWN ARE ALONG W. R. OF TRAVERSE AVE.

CAUTION:  
GAS ON  
E SIDE

TRAVERSE AVENUE

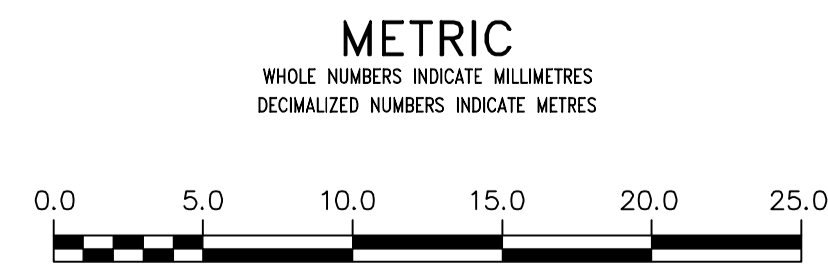


MATCHLINE 1+75.000  
SEE DWG D-14377

FOR WATER SERVICE  
TABLE SEE D-14377

FOR INDEX SEE  
D-14362

NOTE: ALL VALVES TO BE INSTALLED  
CLOCKWISE TO CLOSE



**WARNING**  
IF POWER EQUIPMENT OR EXPLOSIVES ARE TO BE USED FOR EXCAVATION ON THIS PROJECT THE CONTRACTOR MUST:  
1) NOTIFY THE GAS COMPANY OF THE PROPOSED LOCATION OF EXCAVATION.  
2) TAKE PRECAUTION TO AVOID DAMAGE TO GAS COMPANY INSTALLATIONS.  
SEE PROVINCIAL REGULATION 210/72 FOR DETAILS

LOCATION APPROVED  
UNDERGROUND STRUCTURES  
SUPV. U/G STRUCTURES COMMITTEE DATE  
NOTE:  
LOCATION OF UNDERGROUND STRUCTURES AS SHOWN ARE BASED ON THE BEST INFORMATION AVAILABLE BUT NO GUARANTEE IS GIVEN THAT ALL EXISTING UTILITIES ARE SHOWN OR THAT THE GIVEN LOCATIONS ARE EXACT. CONFIRMATION OF EXISTENCE AND EXACT LOCATION OF ALL SERVICES MUST BE OBTAINED FROM THE INDIVIDUAL UTILITIES BEFORE PROCEEDING WITH CONSTRUCTION.

NO.	REVISIONS	DATE	BY

DESIGNED BY	NC	CHECKED BY	SC
DRAWN BY	RS/RJ	APPROVED BY	KZ
SCALE:	HORIZONTAL 1:250 VERTICAL 1:50		
DATE	2016 04 29	DATE	2016 04 29
RELEASED FOR CONSTRUCTION		KAS ZUREK	
PLOT DATE: 2016 04 29			

ENGINEER'S SEAL  
ORIGINAL SIGNED  
BY N.M. CONTI  
16/04/29  
CONSULTANT DRAWING NUMBER

**THE CITY OF WINNIPEG**  
WATER AND WASTE DEPARTMENT  
ENGINEERING DIVISION  
2016 WATER MAIN RENEWALS  
CONTRACT 2  
TRAVERSE AVENUE  
DUBUC STREET TO  
66 N OF NIVERVILLE AVENUE

SHEET 15 OF 16  
CITY DRAWING NUMBER  
D-14376