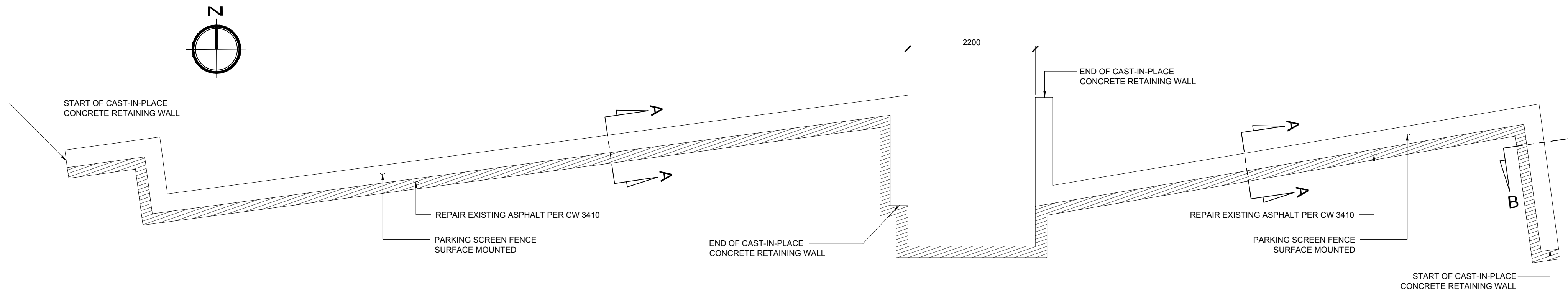
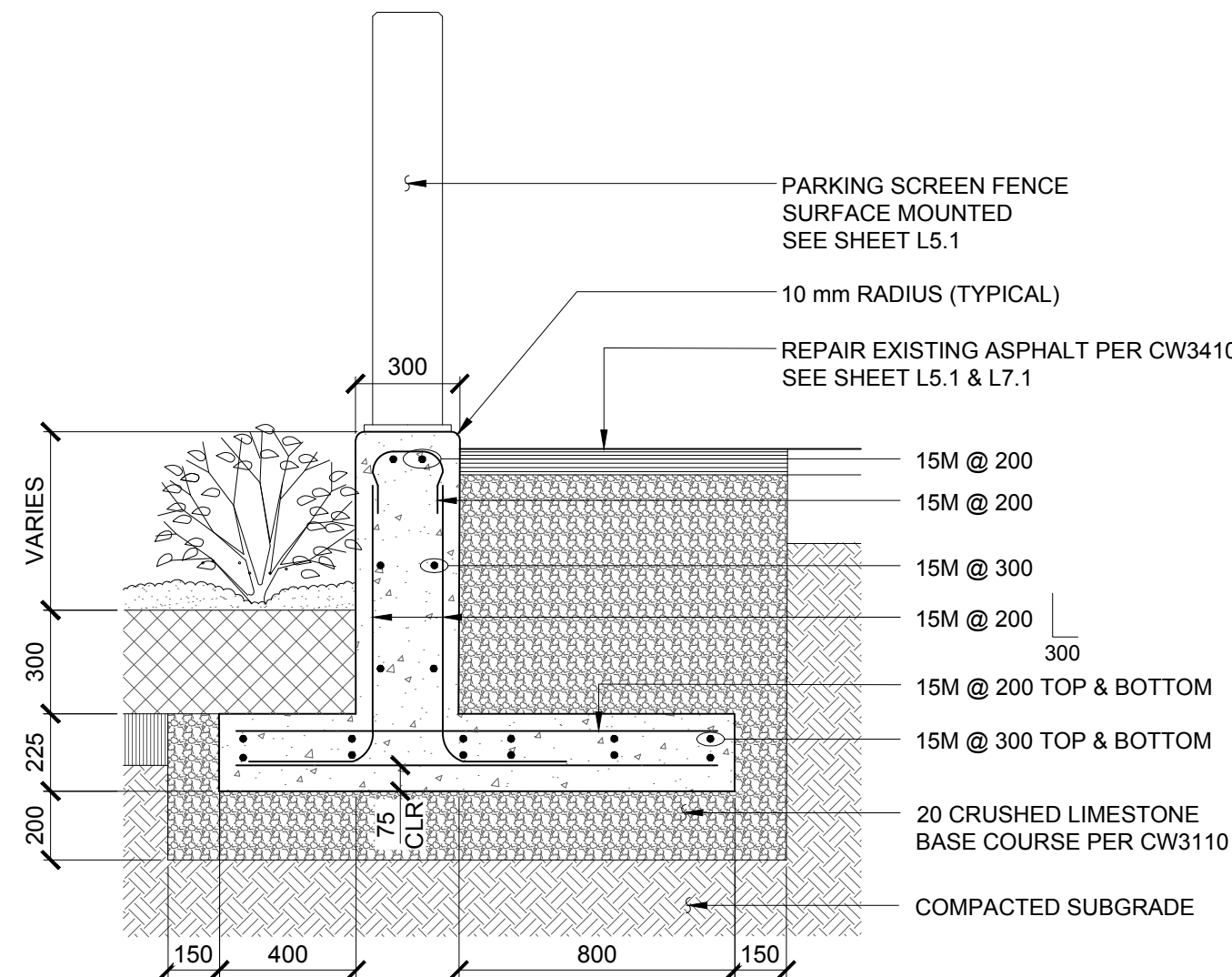


May 24, 2016 - 4:07pm
P:\353501-251625\3535038 - 2015 NE Exchange\MMM Drawings\2016 Structural Work\NE Exchange_John H Struct Details & Lily St Bench.dwg - tab:S1.3

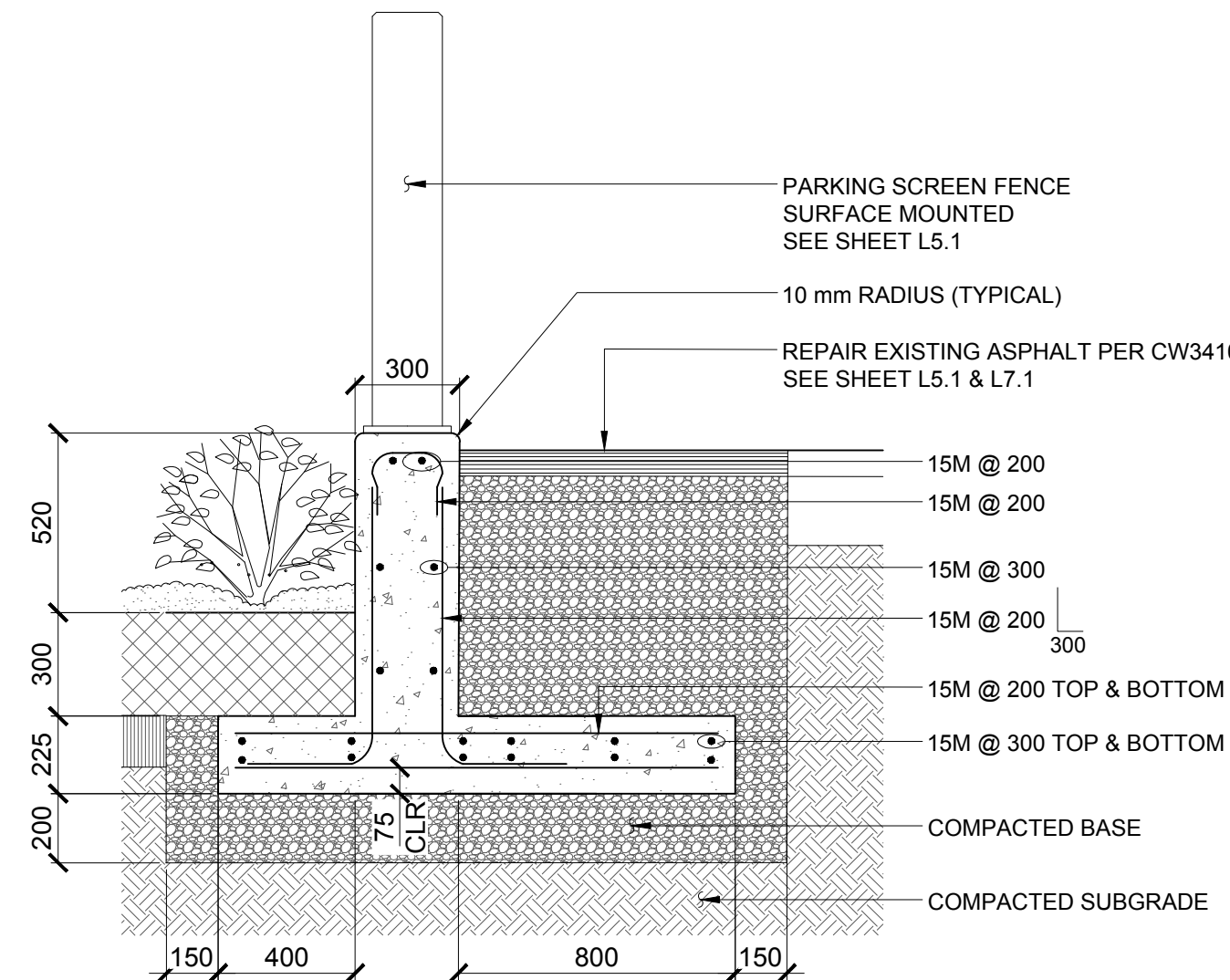


SEE SHEET S1.2 FOR GENERAL STRUCTURAL NOTES

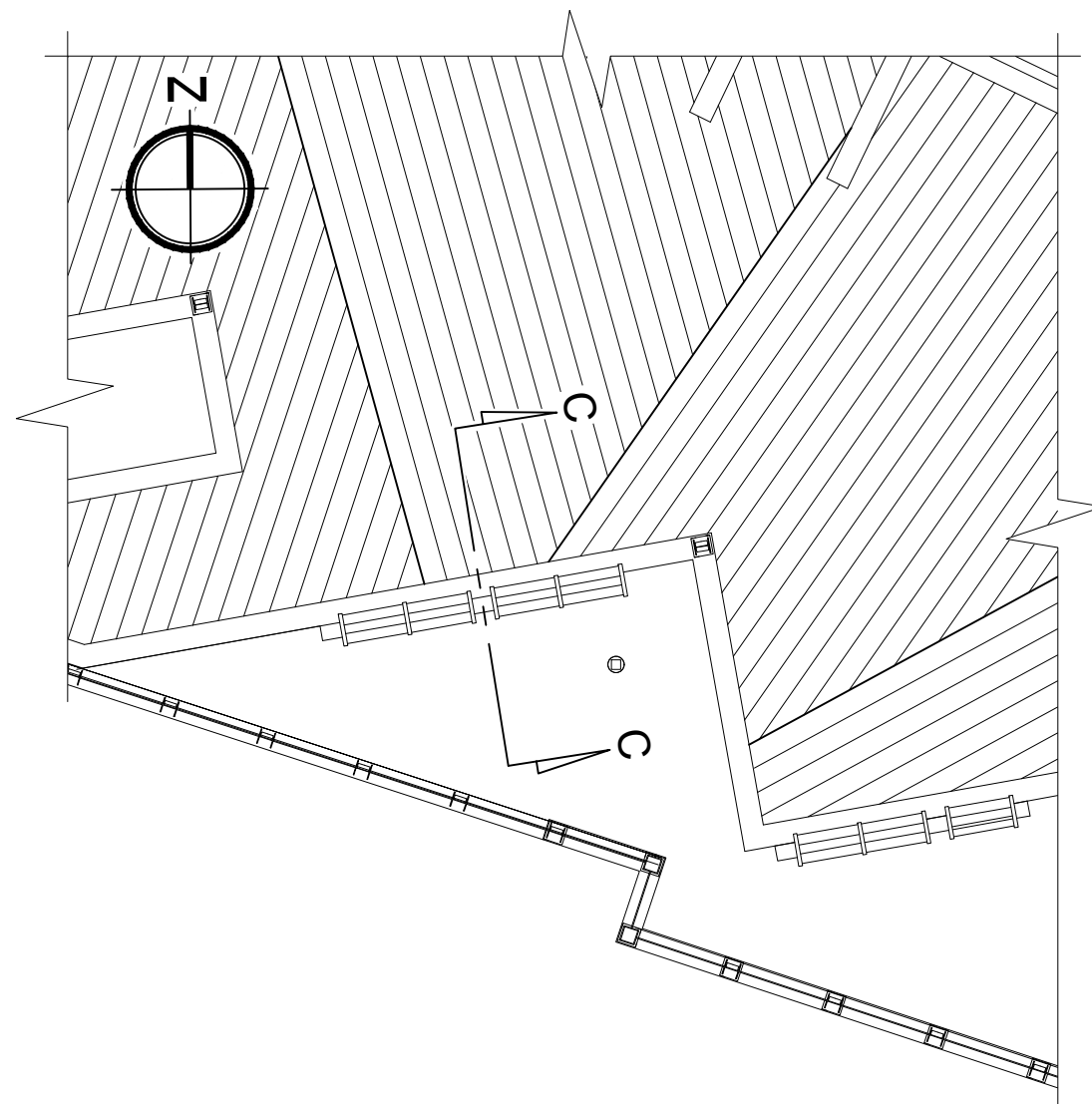
1 PLAN - CONCRETE STAIR & RETAINING WALL
SCALE 1:50
SEE SHEET L7.1 FOR DETAILS



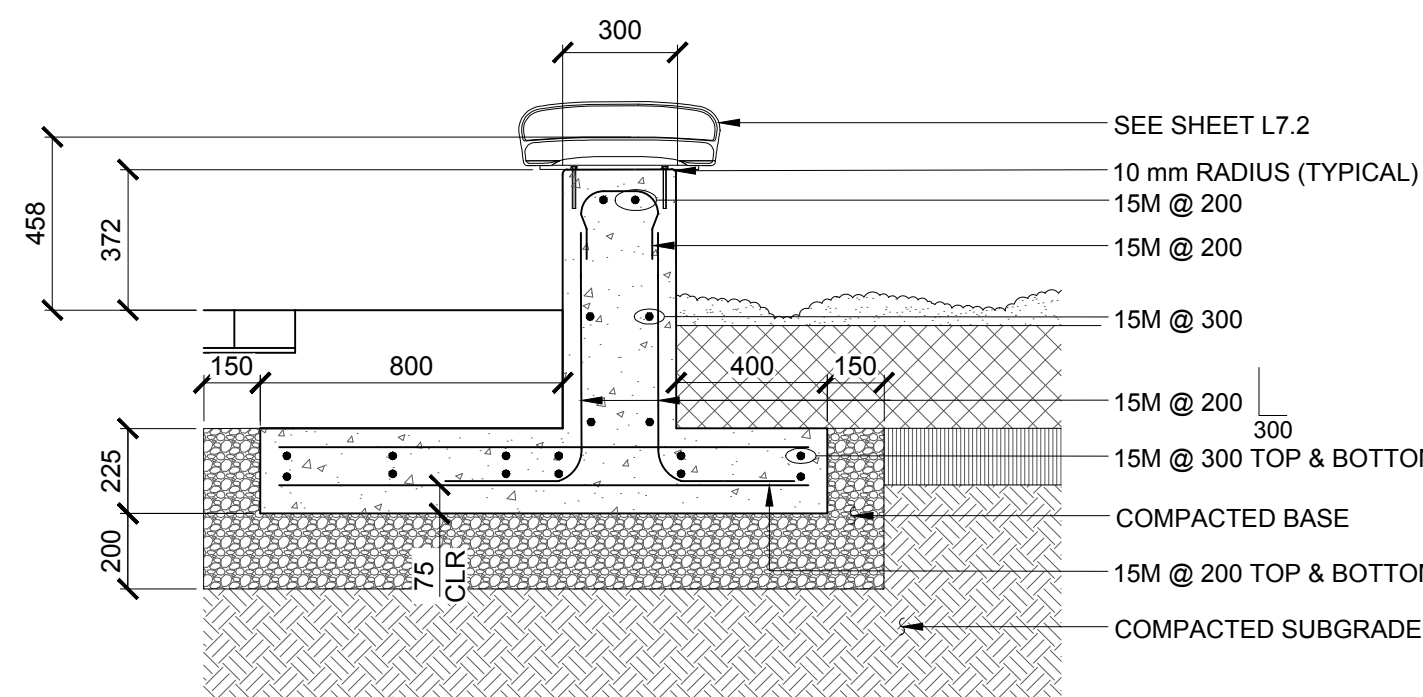
3 C-I-P CONCRETE RETAINING WALL - SECTION A-A
SCALE 1:20



4 C-I-P CONCRETE RETAINING WALL - SECTION B-B
SCALE 1:20





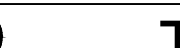

2 PLAN - CONCRETE RETAINING WALL WITH BENCH
SCALE NTS



5 C-I-P CONCRETE WALL - SECTION C-C
SCALE 1:20

METRIC
WHOLE NUMBERS INDICATE MILLIMETRES
DECIMALIZED NUMBERS INDICATE METRES



LOCATIONS APPROVED UNDERGROUND STRUCTURES				G.B.M. - ELEV. -		 MMM GROUP		MMM Group Limited, Suite 111 - 93 Lombard Ave. Winnipeg, MB R3B 3B1 t. 204.943.3178 f. 204.943.4948 www.mmm.ca				 THE CITY OF WINNIPEG PUBLIC WORKS DEPARTMENT ENGINEERING SERVICES DIVISION			
SIGNED BY: _____ DATE _____						DESIGNED BY MRI		CHECKED BY MRI		 CONSULTANT ACAD DWG. NO. S1.3		CITY OF WINNIPEG NORTH EAST EXCHANGE DISTRICT ENGINEERING STUDY CAST-IN-PLACE CONCRETE RETAINING WALL DETAILS		CITY DRAWING NUMBER	
SUPV U/G STRUCTURES _____ DATE _____						DRAWN BY KB		APPROVED BY WC						SHEET 34 OF 39	
LOCATION OF UNDERGROUND STRUCTURES AS SHOWN ARE BASED ON THE BEST INFORMATION AVAILABLE BUT NO GUARANTEE IS GIVEN THAT ALL EXISTING UTILITIES ARE SHOWN OR THAT THE GIVEN LOCATIONS ARE EXACT CONFIRMATION OF EXISTENCE AND EXACT LOCATION OF ALL SERVICES MUST BE OBTAINED FROM THE INDIVIDUAL UTILITIES BEFORE PROCEEDING						HOR. SCALE AS NOTED		RELEASED FOR CONSTRUCTION						BID NO. 345-2016	
						VERTICAL AS NOTED									
						DATE 24/05/2016		DATE _____							
NO. REVISIONS _____ DATE _____ BY _____															