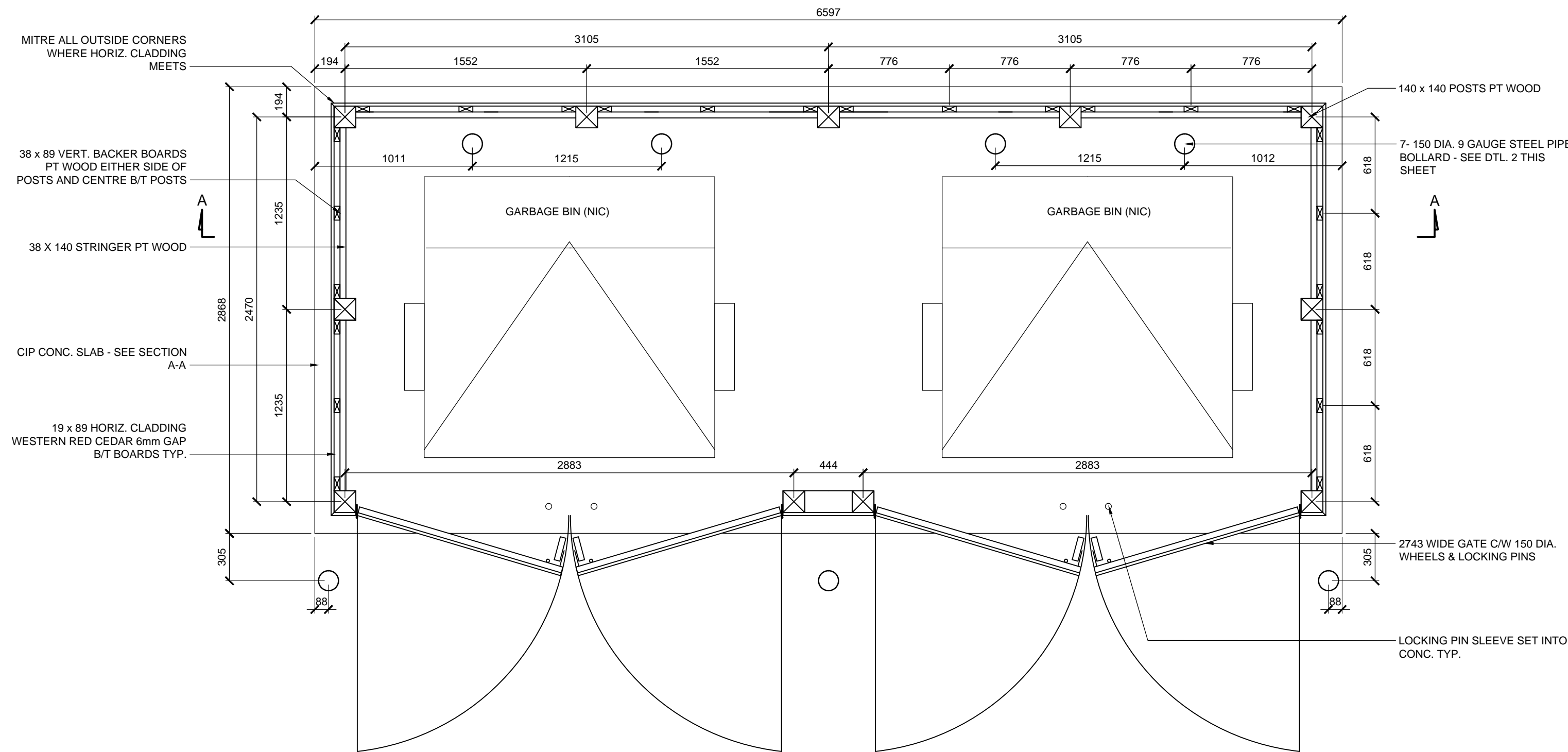
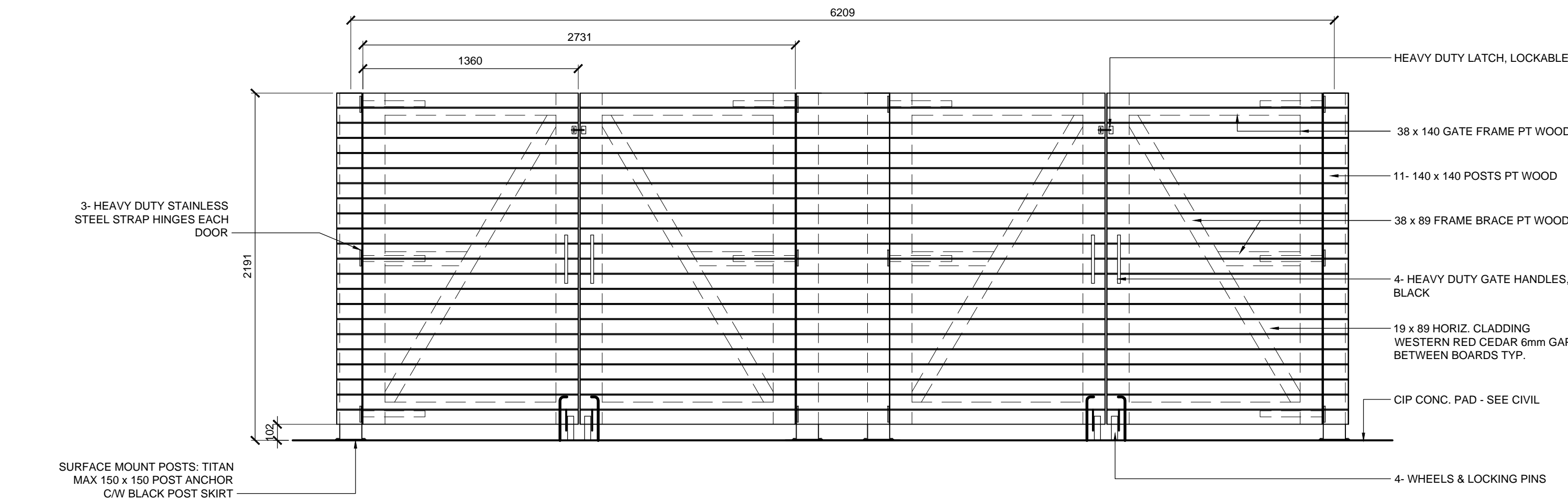
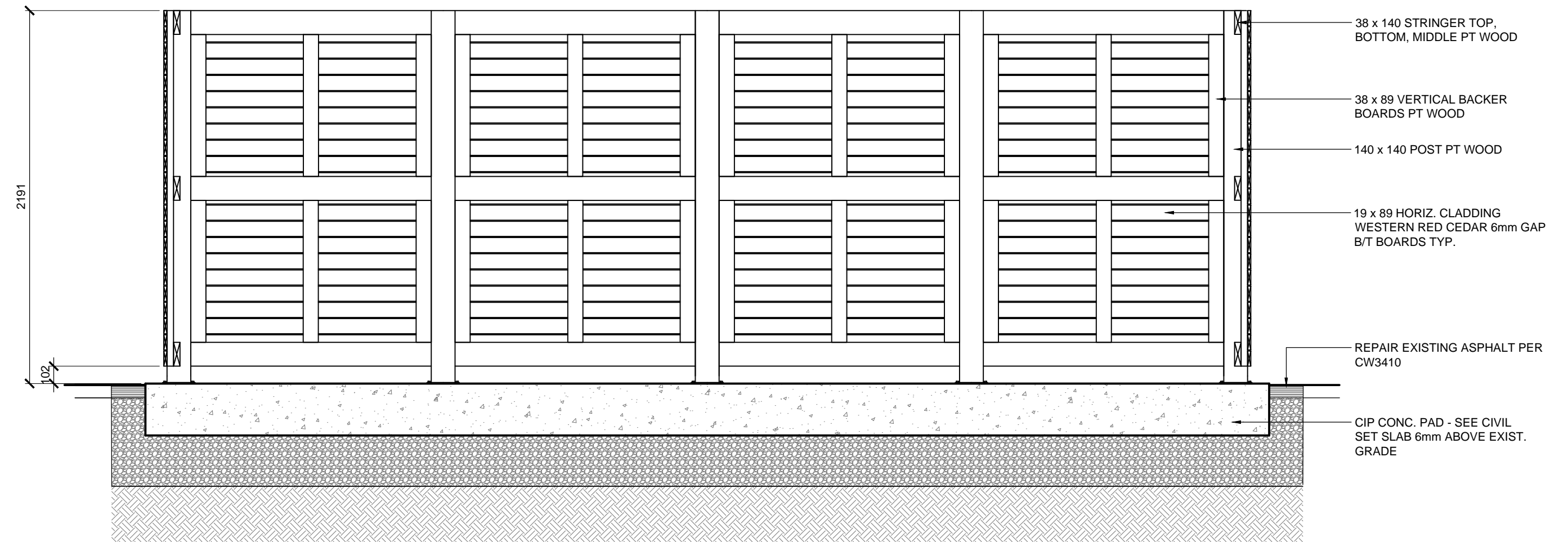


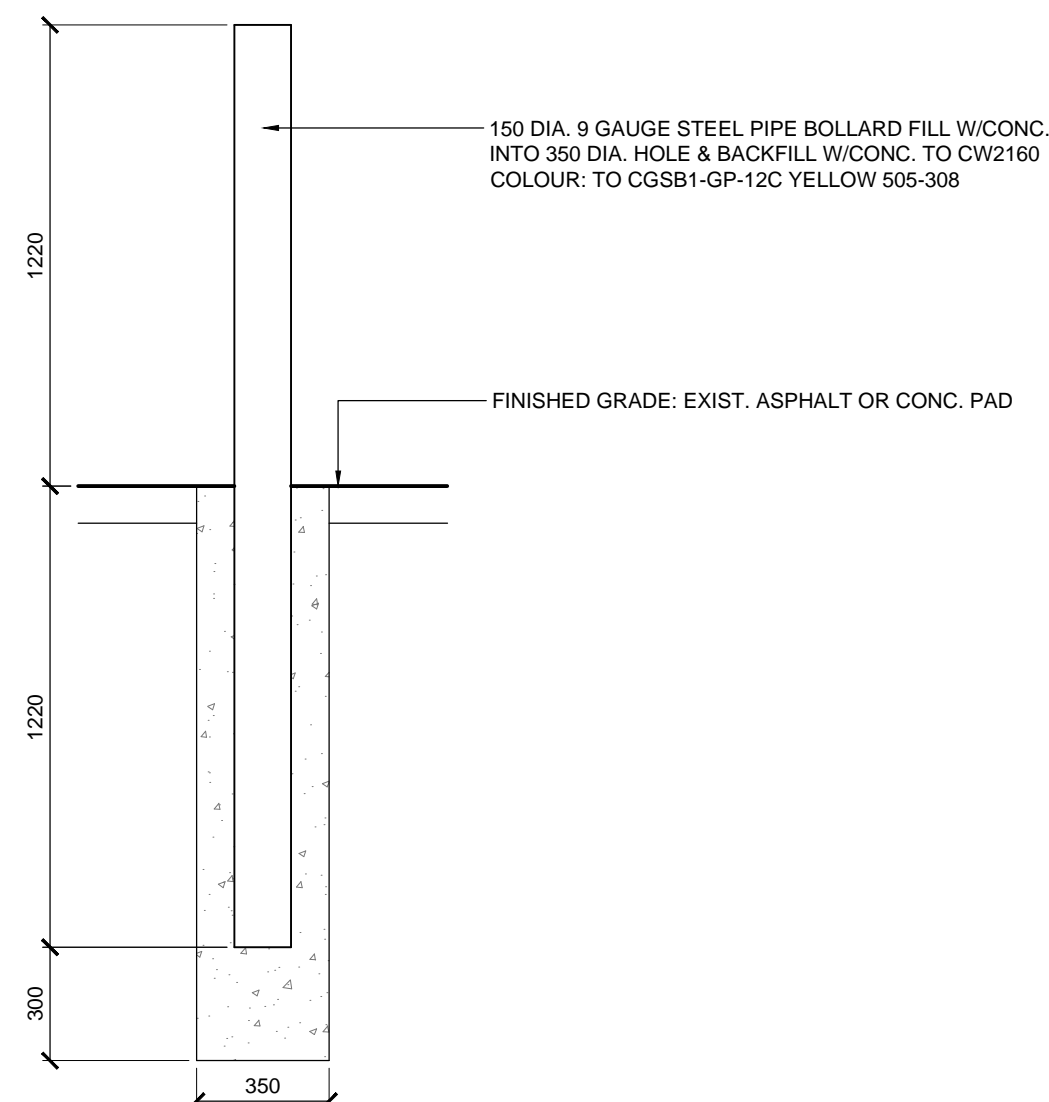
May 20, 2016 - 4:16pm
\\pda\HTFC\FILE_SERVER\2016\15-043 East Exchange Phase 3\ACAD\Details\15-043\11 Details-temp.dwg - tab:L6.2 Wood Carpentry



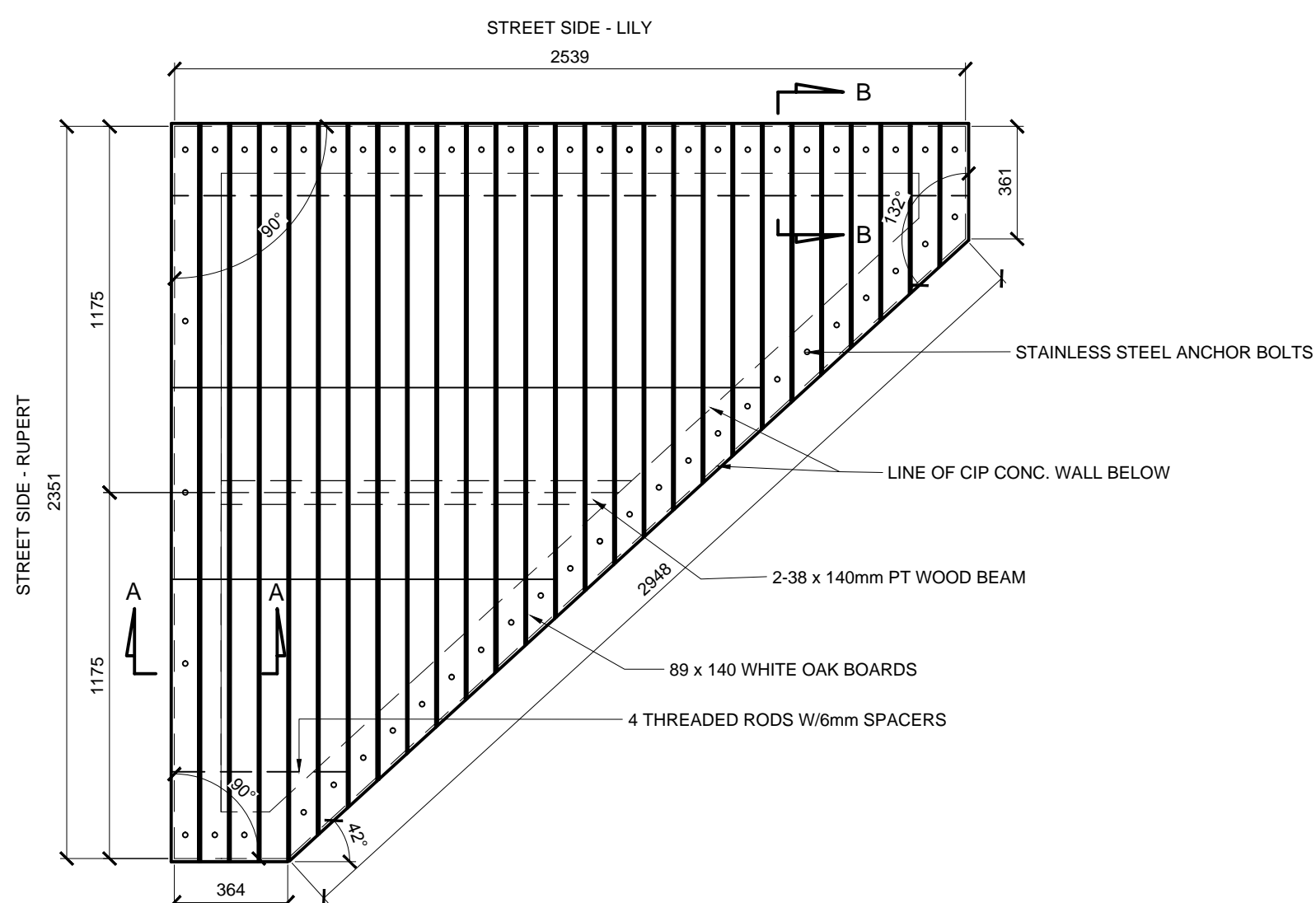
1 DUAL GARBAGE BIN ENCLOSURE - PROVISIONAL ITEM
L6.2 SCALE 1:25



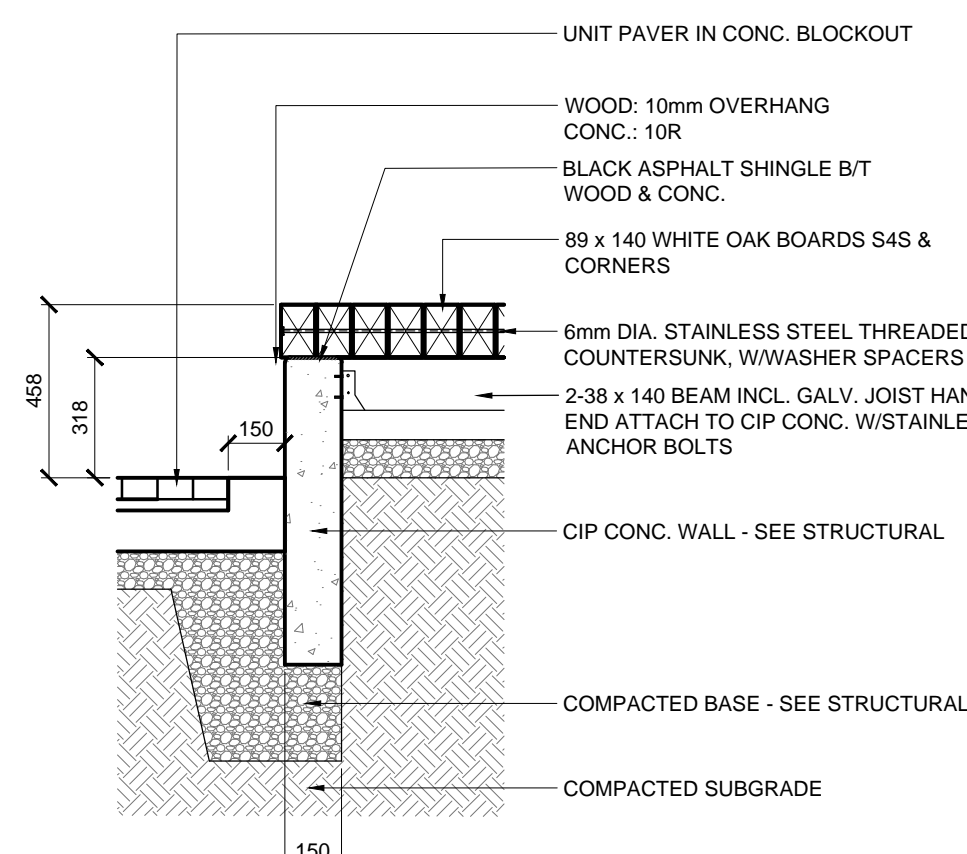
SECTION A-A



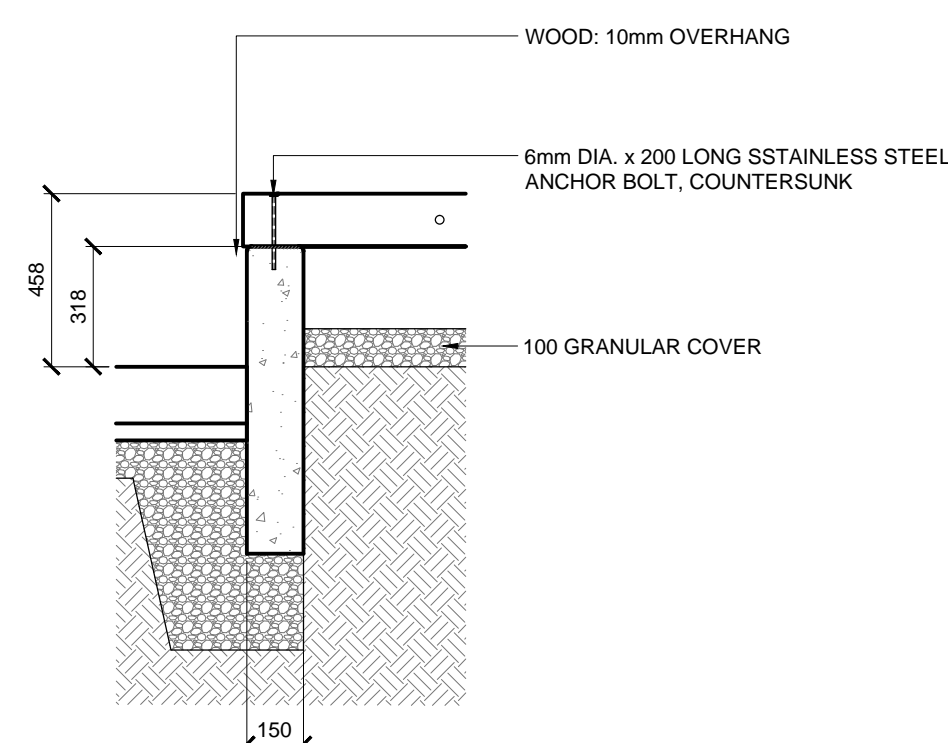
2 STEEL PIPE BOLLARD - PROVISIONAL ITEM
L6.2 SCALE 1:20



3 BENCH ON CIP CONC. WALL - LILY
L6.2 SCALE 1:20



SECTION A-A



SECTION B-B

LOCATIONS APPROVED UNDERGROUND STRUCTURES

SIGNED BY: _____ DATE: _____
SUPV UG STRUCTURES

LOCATION OF UNDERGROUND STRUCTURES AS SHOWN ARE BASED ON THE BEST INFORMATION AVAILABLE BUT NO GUARANTEE IS GIVEN THAT ALL EXISTING UTILITIES ARE SHOWN OR THAT THE GIVEN LOCATIONS ARE EXACT CONFIRMATION OF EXISTANCE AND EXACT LOCATION OF ALL SERVICES MUST BE OBTAINED FROM THE INDIVIDUAL UTILITIES BEFORE PROCEEDING

NO.	REVISIONS	DATE	BY
3	ISSUED FOR TENDER	05/25/16	JH
2	ISSUED FOR UG STRUCTURES REVIEW	04/08/16	JH
1	ISSUED FOR CITY OF WINNIPEG REVIEW	03/18/16	JH

DESIGNED BY	JH	CHECKED BY	GM
DRAWN BY	JH	APPROVED BY	GM
HOR. SCALE	AS NOTED	VERTICAL	AS NOTED
DATE	05/25/16	DATE	

ENGINEER'S SEAL	
CONSULTANT ACAD DWG. NO.	L6.2

NOTES:
These design documents are prepared solely for the use by the party with whom the design professional has entered into a contract and there are no representations of any kind made by the design professional to any party with whom the design professional has not entered into a contract.

THE CITY OF WINNIPEG	PUBLIC WORKS DEPARTMENT	ENGINEERING SERVICES DIVISION
CITY OF WINNIPEG	CITY DRAWING NUMBER	BID NO.
WOOD CARPENTRY 2 & CONC. BENCH DETAILS	SHEET 28 OF 39	345-2016