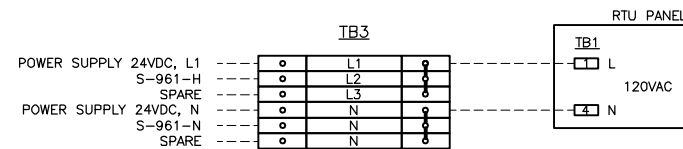


NOTES

- 1) JUMPERS: 11-14; 15-18

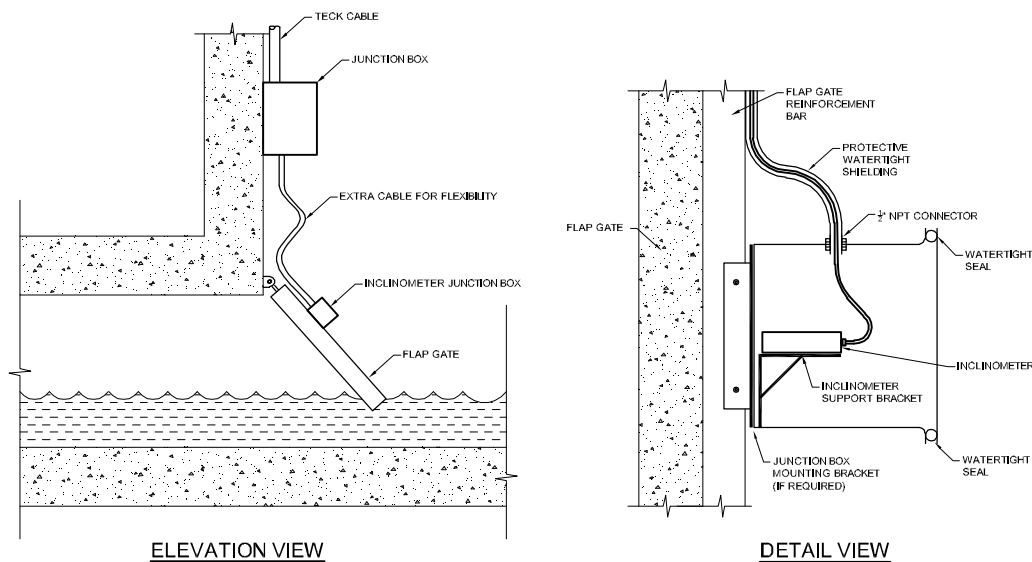
TB2 STRIP DETAIL



NOTES

- 1) JUMPERS: L1-L3; N-N

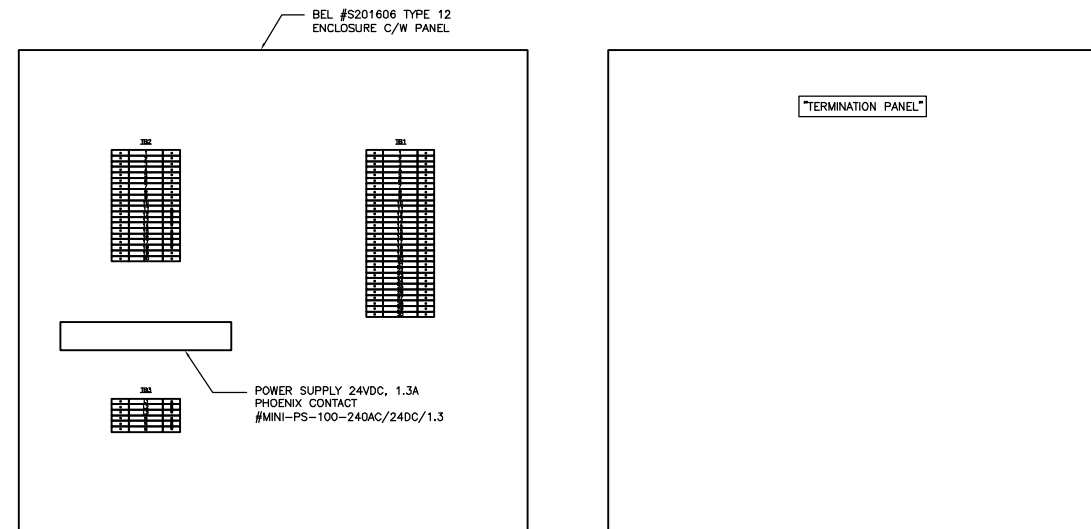
TB3 STRIP DETAIL



GENERAL NOTES

- 1) CABLE SHALL BE SECURED ON THE FLAP GATE CHAMBER WALL AND FLAP GATE  
 2) EXTRA CABLE SHALL BE PROVIDED TO RELIEF CABLE STRESS AT THE JUNCTION OF THE FLAP GATE AND THE CHAMBER WALL  
 3) INSTRUMENT AND JUNCTION BOX MOUNTING BRACKET NEED TO BE ADJUSTED ACCORDING TO FLAP GATE DESIGN

TURCK INCLINOMETER INSTALLATION DETAIL



TERMINATION PANEL DETAIL

No.	INSTRUMENT TAG	DESCRIPTION	MANUFACTURER	MODEL	ISOMETRIC DRAWING	PLC I/O TYPE	POWER SUPPLY	NOTE
1	COC-S-661-LIT	RADAR LEVEL TRANSMITTER	SIEMENS	LR200-7ML5422-2AJ1 AND 7ML5740-2AA01-0A	111211190E-501-COCK.DWG	1X AI	24VDC	INFLOW LEVEL
2	COC-S-951-LIT	RADAR LEVEL TRANSMITTER	ENDRESS+HAUSER	FMR240	111211190E-501-COCK.DWG	1X AI	24VDC	OUTFALL LEVEL
3	COC-S-851-ZT1/ZT2	INCLINATION TRANSMITTER	TURCK	B2N85H-Q20L60-2LI2-H1151-M1534032	111211190E-501-COCK.DWG	2X AI	24VDC	FLAP GATE
4	COC-S-961-FIT/VIT/LIT	ULTRASONIC FLOW METER	HYDROVISION	QEPSC8BX40XXAX	111211190E-501-COCK.DWG	3X AI + 1X DI	120VAC	OUTFALL FLOW
5	COC-S-651-FIT/VIT/LIT	ULTRASONIC FLOW METER	TELEDYNE ISCO	ADFM	111211190E-501-COCK.DWG	3X AI + 2X DI	24VDC	INFLOW FLOW

INSTRUMENT LIST

No.	CABLE TAG	FROM	TO	DESCRIPTION	MANUFACTURER	CATALOG No.	NOTE
1	S-661-LIT/F-S-661-TP	COC-S-661-LIT	TERMINATION PANEL	#18 AWG, 1-PAIR, TWISTED, SHIELDED, TECK 90	TEXCAN	C3-9126-1801-19	4-20mA
2	S-951-LIT/F-S-951-TP	COC-S-951-LIT	TERMINATION PANEL	#18 AWG, 1-PAIR, TWISTED, SHIELDED, TECK 90	TEXCAN	C3-9126-1801-19	4-20mA
3	S-851-ZT1/S-TNB2-JB/L-S-851-TP	JB-851	TERMINATION PANEL	#18 AWG, 2-TRIADS, TWISTED, SHIELDED, TECK 90	TEXCAN	C3-9336-1802-19	SENSOR CONNECTION
4	S-961-FE/S-TBN1-JB/F-S-961-FIT/VIT/LIT	COC-S-961-VE/FE	JB-961	SENSOR CABLE			SENSOR CONNECTION
5	S-961-FE/S-TBN1-JB/F-S-961-FIT/VIT/LIT	JB-961	COC-S-961-FIT/VIT/LIT	#18 AWG, 2-TRIADS, TWISTED, SHIELDED, TECK 90	TEXCAN	C3-9336-1802-19	SENSOR CONNECTION
6		COC-S-961-FIT/VIT/LIT	TERMINATION PANEL	#18 AWG, 4-PAIRS, TWISTED, SHIELDED, TECK 90	TEXCAN	C3-9326-1804-19	3X AI TO RTU
7		COC-S-961-FIT/VIT/LIT	TERMINATION PANEL	#18 AWG, 1-PAIR, TWISTED, SHIELDED, TECK 90	TEXCAN	C3-9126-1801-19	1X DI TO RTU
8		COC-S-961-FIT/VIT/LIT	TERMINATION PANEL	#14 AWG, 2C, TECK 90	TEXCAN	05001-01-010	POWER 120VAC
9	S-551-FE/S-TBN1-JB/F-S-551-FIT/VIT/LIT	COC-S-651-VE/FE	COC-S-651-FIT/VIT/LIT-1	SENSOR CABLE			SENSOR CONNECTION
10		COC-S-651-FIT/VIT/LIT-1	COC-S-651-FIT/VIT/LIT-2	#14 AWG, 2C, TECK 90	TEXCAN	05001-01-010	POWER 24VDC
11		COC-S-651-FIT/VIT/LIT-2	TERMINATION PANEL	#18 AWG, 4-PAIRS, TWISTED, SHIELDED, TECK 90	TEXCAN	C3-9326-1804-19	3X AI TO RTU
12		COC-S-651-FIT/VIT/LIT-2	TERMINATION PANEL	#18 AWG, 2-PAIR, TWISTED, SHIELDED, TECK 90	TEXCAN	C3-9126-1802-19	2X DI TO RTU
13		RTU PANEL	TERMINATION PANEL	#14 AWG, 2C, TECK 90	TEXCAN	05001-01-010	POWER 120VAC

CABLE LIST

REV	DATE	NOTE	<b>THE CITY OF WINNIPEG</b> WATER AND WASTE DEPARTMENT 	<b>CSO OUTFALL MONITORING</b>	
2	10.04.16.	AS-BUILT		TITLE:	COCKBURN ELECTRICAL DETAILS
1	10.04.12.	BPR REV.	JOB No.	111211190	DATE: MAR. 3, 2010
0	10.03.08.	CLIENT REV.	SCALE:	N.T.S.	DWG. No.
			CHECKED:	D.W.D.	<b>E-503</b>