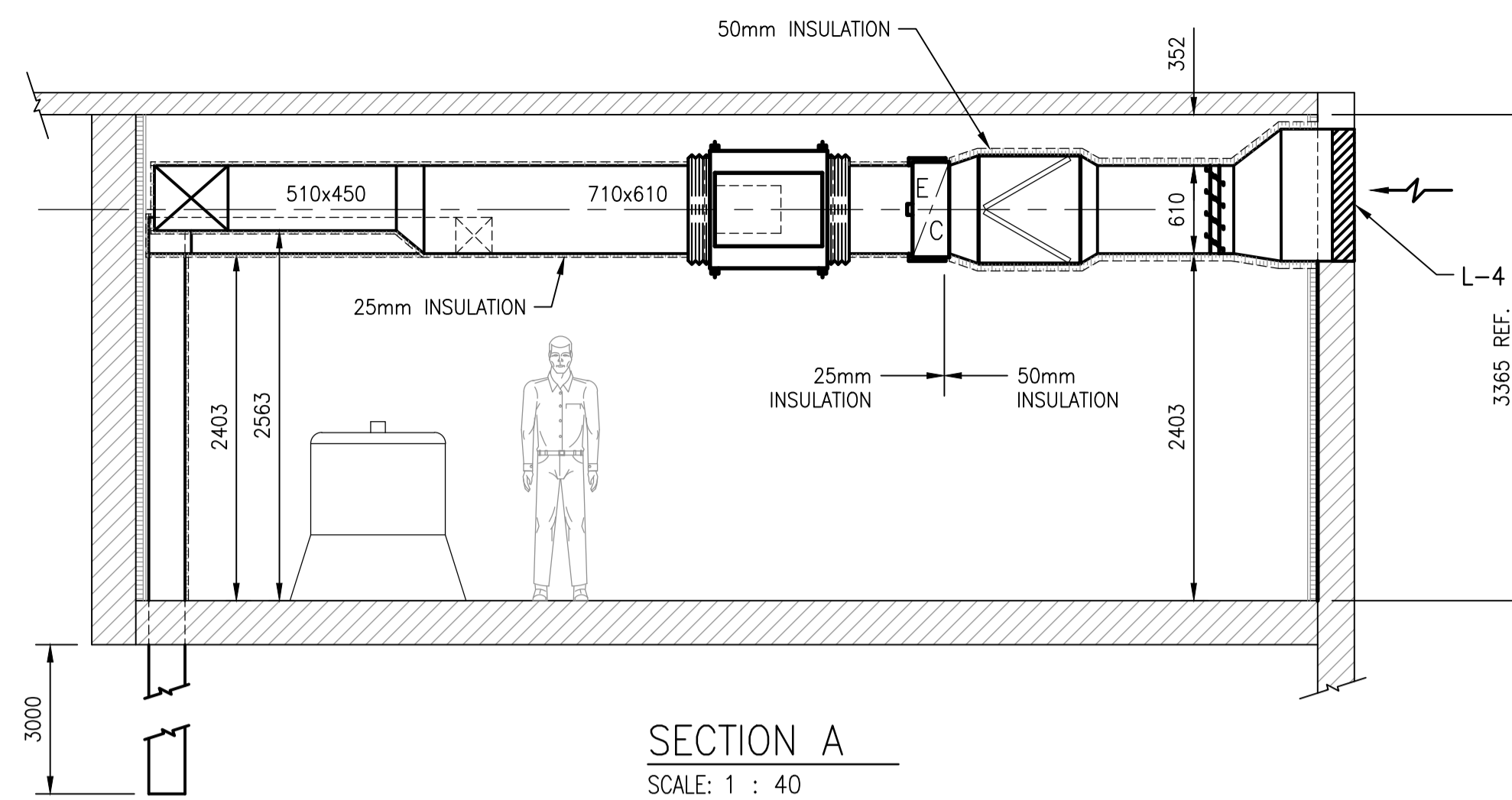


MAIN FLOOR PLAN

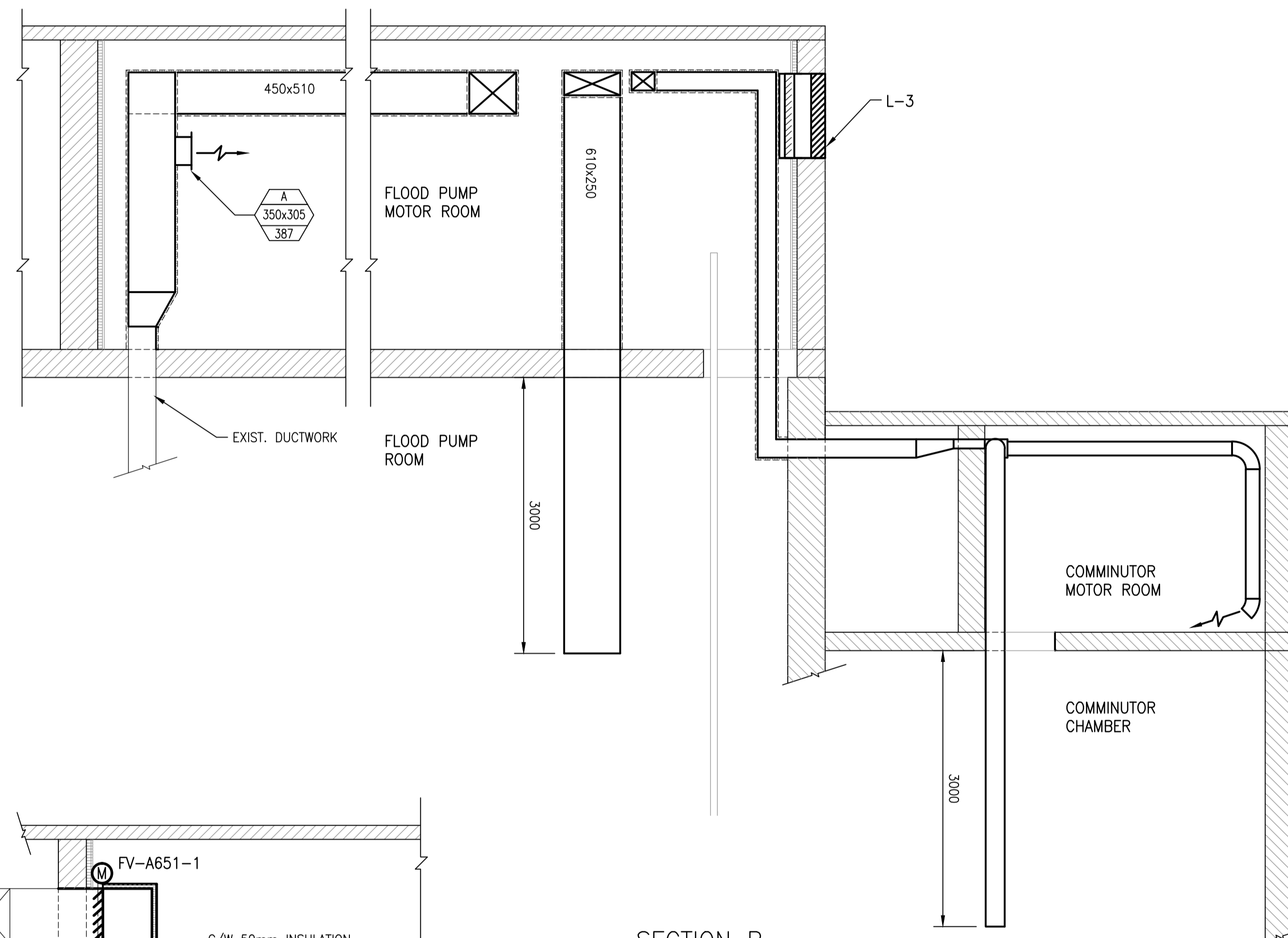
SCALE: 1 : 40

NOTES:

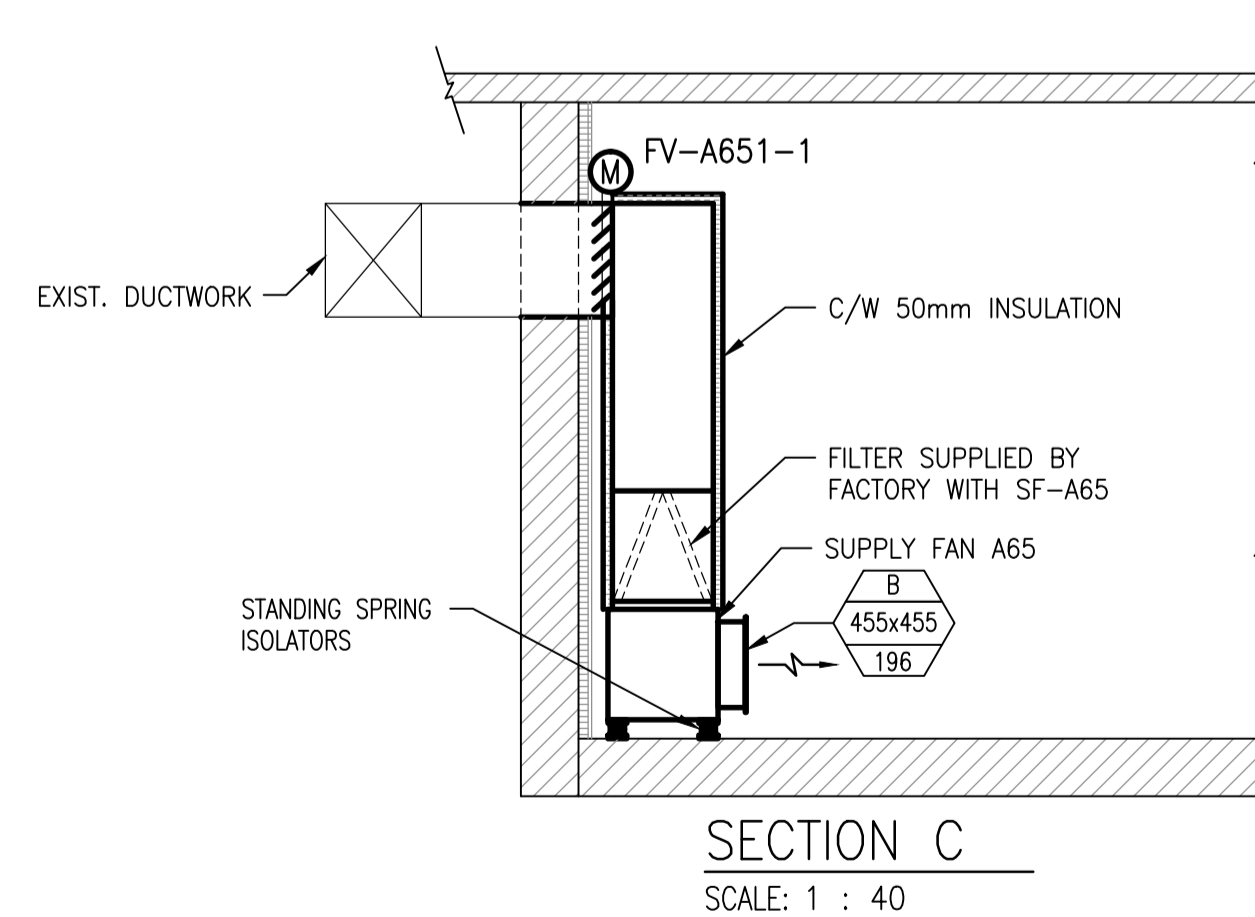
- 1 PROVIDE CLEAR ACCESS TO EXISTING ATTIC HATCH.
- 2 CONNECT NEW DUCTWORK TO EXISTING IN FLOOD PUMP ROOM.
- 3 RUN NEW DUCTWORK THROUGH EXISTING PENETRATION ABOVE DOOR.
- 4 RUN RISER TO 300mm AFF.
- 5 RUN RISER TO 3000mm BELOW LEVEL OF COMMINUTOR MOTOR ROOM.
- 6 SCAN CONCRETE FLOOR FOR REBAR LOCATIONS AND COORDINATE WITH CONTRACT ADMINISTRATOR PRIOR TO MAKING PENETRATION.



SECTION A
SCALE: 1 : 40



SECTION B
SCALE: 1 : 40



SECTION C
SCALE: 1 : 40

LEGEND:

—	EXISTING	Ⓜ	MOTORIZED DAMPER
—	NEW WORK	Ⓛ	BALANCE DAMPER
- - -	EXISTING TO BE REMOVED	⚠	FIRE EXTINGUISHER
XX	TAG SIZE		
→	FLOW (L/S)		

DESIGN CRITERIA:

THE BUILDING ENVIRONMENTAL CONTROL SYSTEMS SHOWN ON THESE DRAWINGS HAVE BEEN DESIGNED TO THE REQUIREMENTS OF THE MANITOBA BUILDING CODE AND VENTILATED AT A MINIMUM OF 6 AIR CHANGES PER HOUR CONTINUOUS. WHEN THE STATION IS UNOCCUPIED, THE SYSTEM WILL CONTINUE TO PROVIDE 6 AIR CHANGES PER HOUR WITH 75% RECIRCULATED AIR. MORE SPECIFICALLY AS FOLLOWS:

- OUTDOOR CONDITIONS OF -33°C IN WINTER.
- INDOOR CONDITIONS OF 15°C IN WINTER.

DRAWING NUMBER	REFERENCE DRAWINGS
----------------	--------------------

00	ISSUED FOR TENDER, BID OP. 331-2016	2016/05/06	TS	SSN
NO.	REVISIONS	DATE	DESIGN	CHECK

<p>SNC-LAVALIN INC. 148 Nature Park Way Winnipeg, MB, Canada R3P 0X7 204-786-8080</p>		ENGINEER'S SEAL ORIGINAL DRAWING SEALED BY: T. SCHICK SNC-LAVALIN MEMBER #21892 2016/05/09 REV. 00
DESIGNED BY: T. SCHICK DRAWN BY: D. BOURGEOIS SCALE: 1:40 DATE: 2015/11/17 CONSULTANT NO.:	CHECKED BY: S. NORSWORTHY APPROVED BY: I. PARKINSON ISSUED FOR CONSTRUCTION BY: K. ZUREK DATE: 2016/05/06	CITY DRAWING NUMBER 1-0127A-M0002

<p>THE CITY OF WINNIPEG WATER AND WASTE DEPARTMENT</p>		
COCKBURN FLOOD AND WASTEWATER PUMPING STATION 2016 UPGRADES MECHANICAL FLOOR PLAN MAIN FLOOR		
CITY DRAWING NUMBER	SHEET	REV. SIZE
1-0127A-M0002	001	00 A1