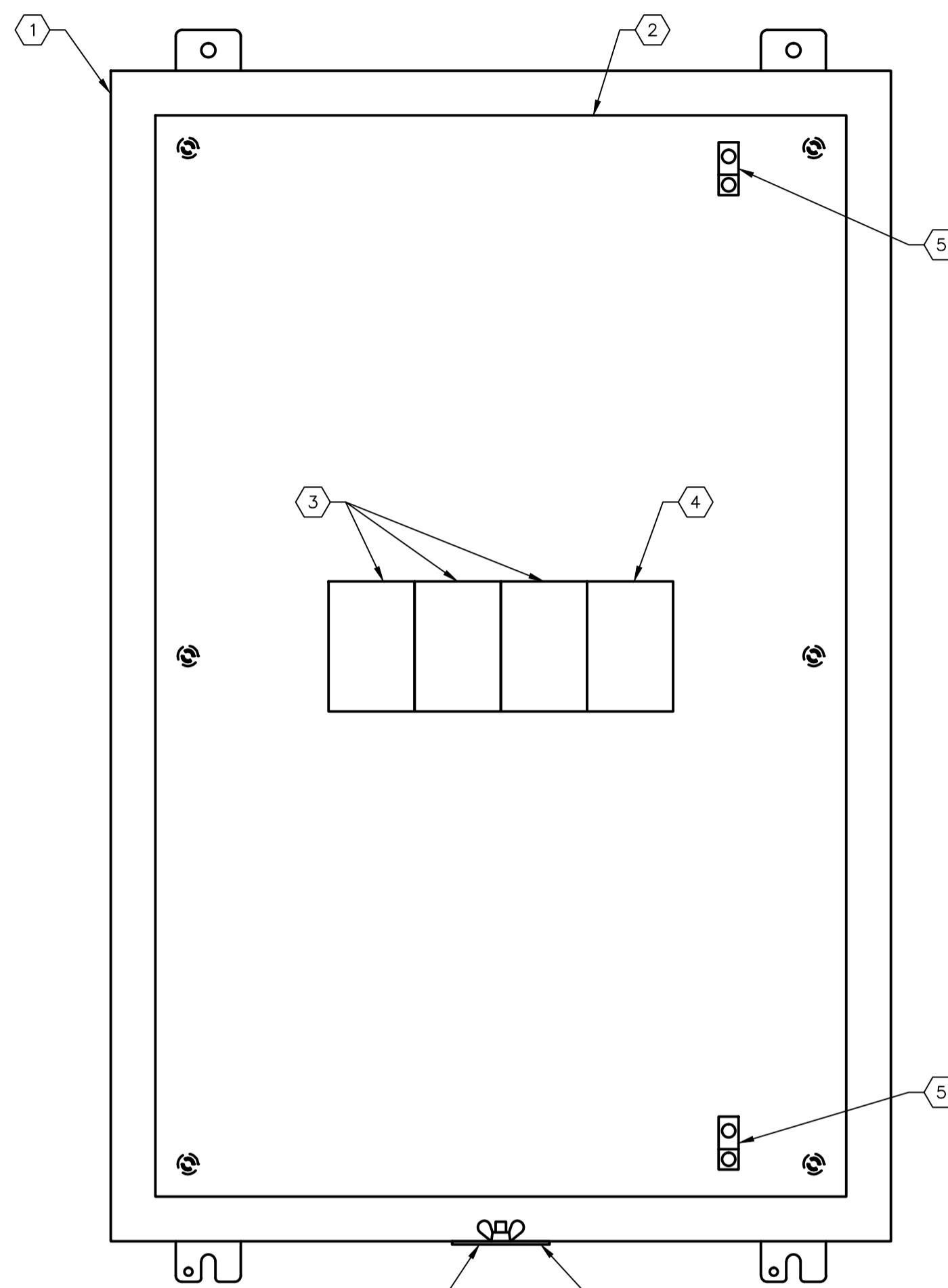


EXTERIOR PANEL VIEW
SCALE: 1:4



PROVIDE 76mm (3") DIAMETER HOLE FOR INCOMING CABLE

INTERIOR PANEL VIEW
SCALE: 1:4

| BILL OF MATERIAL | | | | |
|------------------|-----|---|--------------|----------------|
| ITEM | QTY | DESCRIPTION | MANUFACTURER | CATALOG NUMBER |
| 1 | 1 | WALL-MOUNTED ENCLOSURE, NEMA TYPE 4 | HOFFMAN | A36H24BLP |
| 2 | 1 | BACK PANEL | HOFFMAN | A36P24 |
| 3 | 1 | POWER TERMINAL, 3 POLE, 255 AMP, 600V INSULATED | MARATHON | 1433123 |
| 4 | 1 | POWER TERMINAL, 1 POLE, 255 AMP, 600V INSULATED | MARATHON | 1433123 |
| 5 | 2 | GROUND LUG, NON-INSULATED, 2/0 - 14 AWG | MARATHON | 9818102 |
| 6 | 1 | HOLE SEAL, STEEL, 76mm | HOFFMAN | AS250 |
| 7 | 1 | LAMACOID, WHITE PLATE WITH BLACK TEXT | - | - |

| | |
|----------------|------------------------|
| 1-0127A-E0002 | ELECTRICAL SINGLE LINE |
| DRAWING NUMBER | REFERENCE DRAWINGS |

| NO. | REVISIONS | DATE | DESIGN | CHECK |
|-----|-------------------------------------|------------|--------|-------|
| 00 | ISSUED FOR TENDER, BID OP. 331-2016 | 2016/05/06 | BJC | DB |

SNC-LAVALIN INC.
148 Nature Park Way
Winnipeg, MB, Canada R3P 0X7
204-786-8080

DESIGNED BY: B. CLEVEN
DRAWN BY: Y. KONIG
SCALE: NTS
DATE: 2016/04/22

CHECKED BY: D. BECKER
APPROVED BY: I. PARKINSON
ISSUED FOR CONSTRUCTION BY: K. ZUREK
DATE: 2016/05/06

CONSULTANT NO.:

ENGINEER'S SEAL

ORIGINAL DRAWING
SEALED BY:
B. CLEVEN
SNC-LAVALIN
MEMBER #31479
2016/05/06
REV. 00

THE CITY OF WINNIPEG
WATER AND WASTE DEPARTMENT

COCKBURN FLOOD AND WASTEWATER PUMPING STATION
2016 UPGRADES
PANEL LAYOUT
JB-A72
TEMPORARY GENERATOR CONNECTION

CITY DRAWING NUMBER: 1-0127A-E0016
SHEET: 001
REV: 00
SIZE: A1