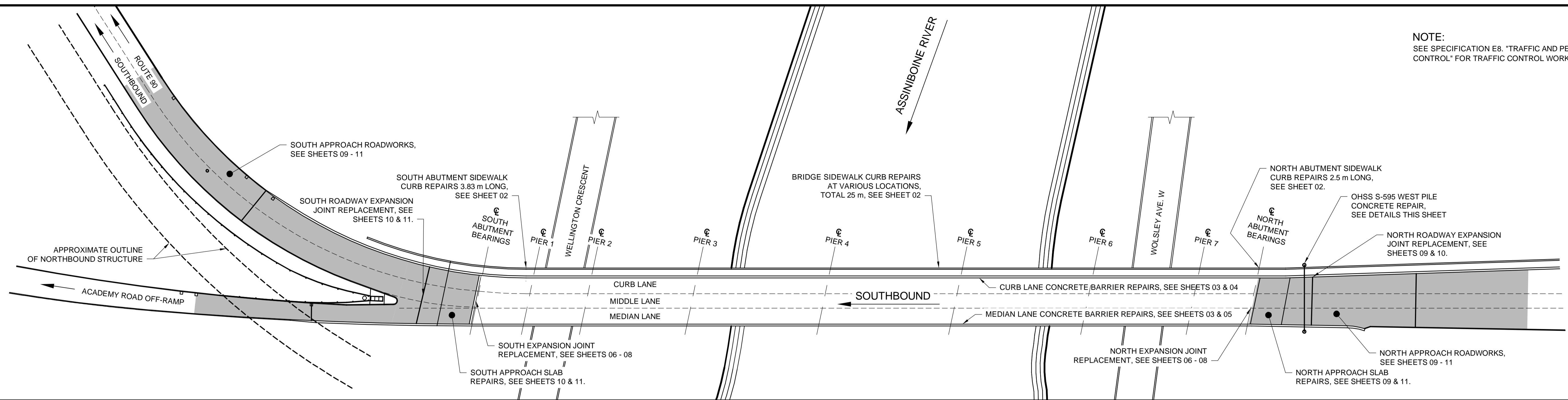
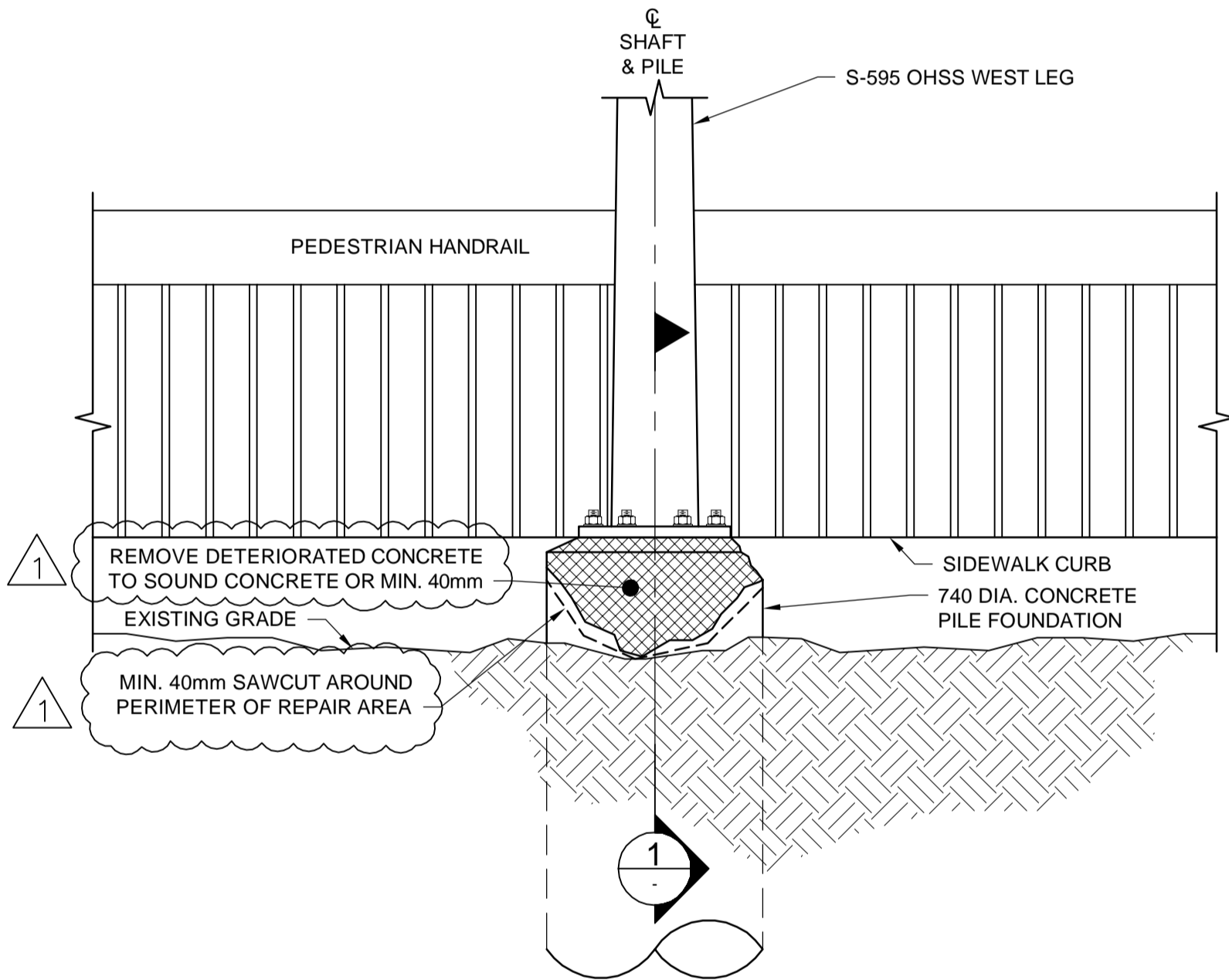




NOTE:
SEE SPECIFICATION E8. "TRAFFIC AND PEDESTRIAN CONTROL" FOR TRAFFIC CONTROL WORK ZONE DETAILS

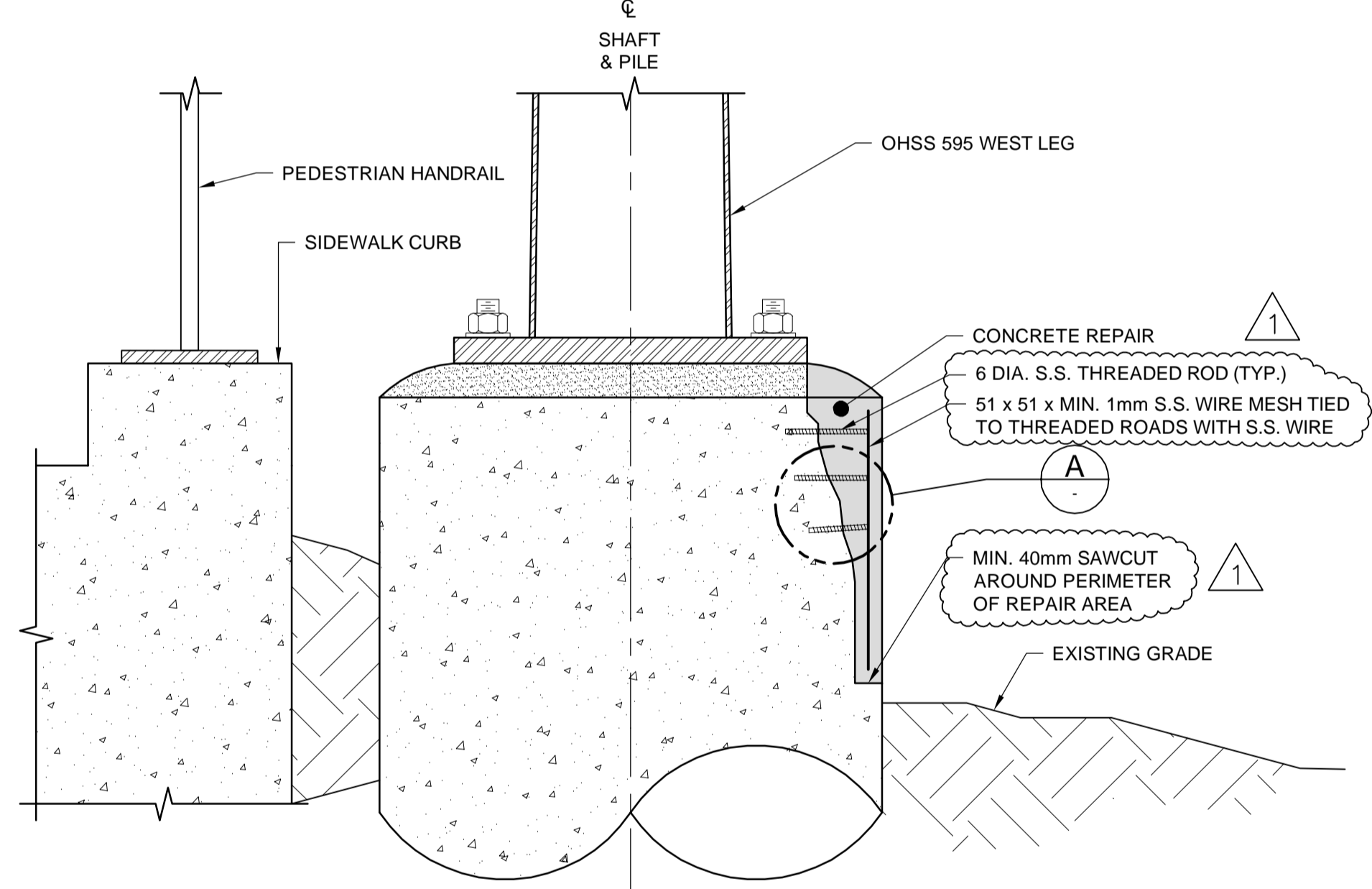


KEY PLAN

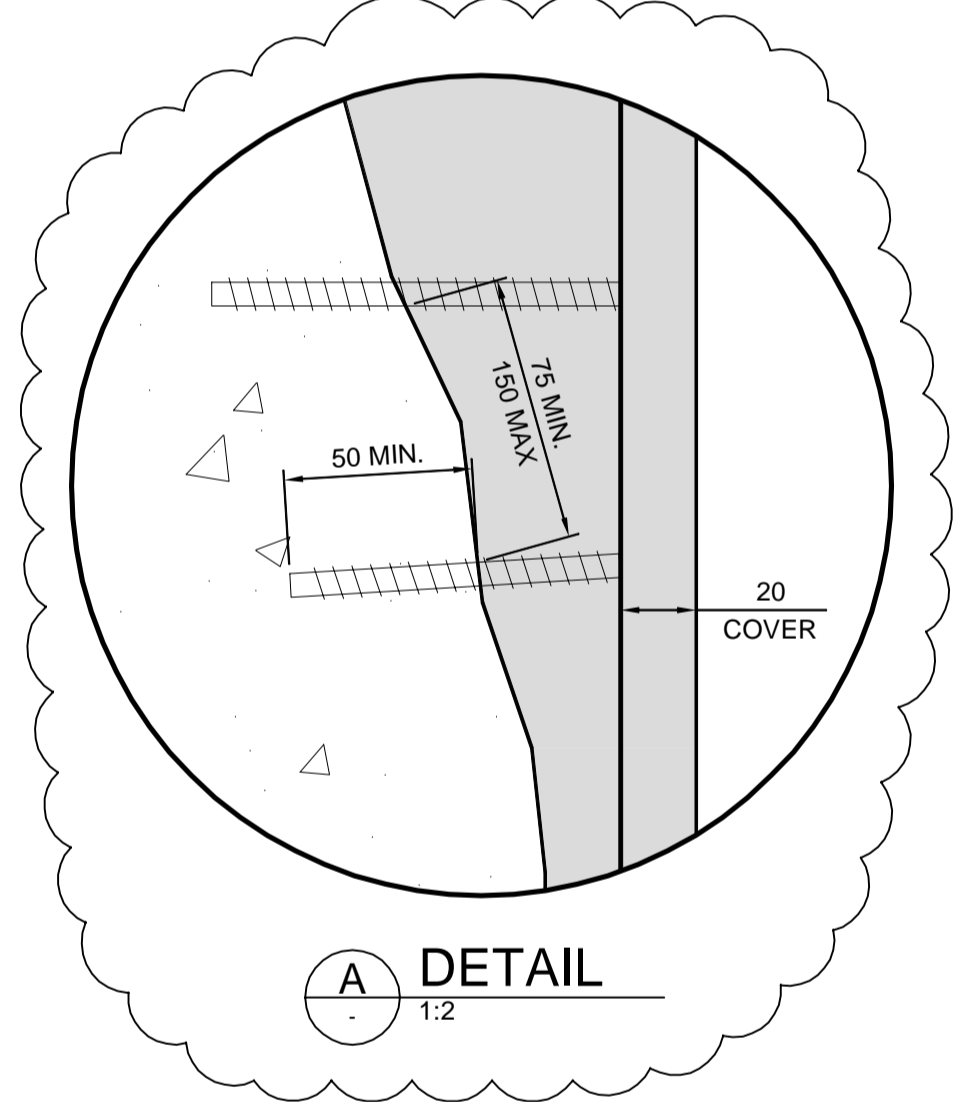


OHSS S-595 WEST PILE CONCRETE REPAIR ELEVATION
1:20

- PILE REPAIR METHODS:**
1. SAWCUT MIN. 40mm AROUND PERIMETER OF REPAIR AREA
 2. REMOVE FRACTURED OR DETERIORATED CONCRETE TO:
 - 2.1. SOUND CONCRETE;
 - 2.1. MIN. 40mm DEPTH, AND
 - 2.2. IF REMOVALS EXCEED HALF DEPTH OF REINFORCING BARS, THEN CONTINUE MIN. 20mm PAST REINFORCING BARS
 3. INSTALL 6 DIA. S.S. THREADED ROD:
 - 3.1. RANDOM PATTERN WITH MIN. 75mm AND MAX 150mm SPACING,
 - 3.2. 20mm CLEAR COVER
 4. INSTALL 51 x 51 x MIN. 1mm S.S. WIRE MESH, TIE MESH TO S.S. THREADED RODS WITH S.S. WIRE
 5. CLEAN CONCRETE REPAIR AREA AS SPECIFIED AND APPLY BONDING AGENT
 6. PLACE REPAIR MATERIAL AS SPECIFIED



SECTION
1:8



DETAIL
1:2

METRIC

WHOLE NUMBERS INDICATE MILLIMETRES
DECIMALIZED NUMBERS INDICATE METRES



B.M. ELEV.	DESIGNED BY DRA		ENGINEER'S SEAL 	 THE CITY OF WINNIPEG PUBLIC WORKS DEPARTMENT	CITY DRAWING NUMBER B101-16-01
	DRAWN BY KB		2016 BRIDGE MAINTENANCE - ST. JAMES SOUTHBOUND BRIDGE REPAIRS		SHEET 01 OF 11
	CHECKED BY RJT		RELEASED FOR CONSTRUCTION DATE:	CONSULTANT PROJECT NUMBER 16-3513	CONSULTANT DRAWING NUMBER --
	APPROVED BY SSR		HOR. SCALE VERTICAL	ST. JAMES SB KEY PLAN & OHSS S-595 CONCRETE REPAIR DETAILS	
1 ISSUED FOR ADDENDUM 1 0 ISSUED FOR TENDER	6/22/16 6/21/16	RJT RJT	DATE: JUNE 21, 2016	DATE	
NO. REVISIONS	DATE	BY	DATE	DATE	