

RIGHT-OF-WAY CROSS SECTION SELKIRK AVENUE
ANDREWS STREET TO SALTER STREET
N.T.S.

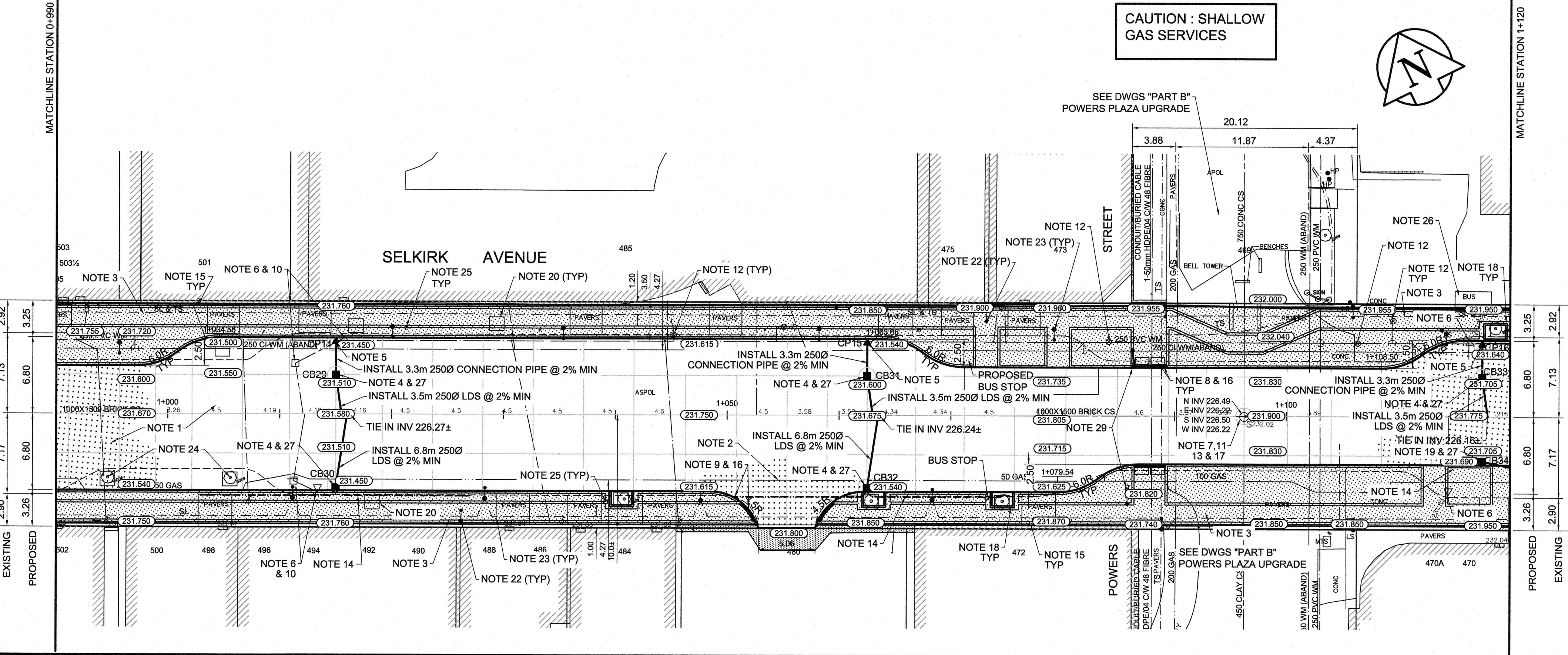
DESCRIPTION	RIM ELEV.	INVERT			
		EAST	WEST	NORTH	SOUTH
CB 29	231.510				229.910
CB 30	231.450	230.500	230.500	229.850	
CB 31	231.605				230.005
CB 32	231.540	230.590	230.590	229.940	
CB 33	231.705				230.105
CB 34	231.690	230.490	230.740		
CP 14	231.450				230.450
CP 15	231.540				230.540
CP 16	231.640				230.640

- REFERENCE NOTES**
- PAVEMENT DIMENSIONS ARE TO BACK OF CURB
 - BASELINE IS CENTRELINE OF RIGHT-OF-WAY
 - PROPERTY LINES OBTAINED FROM THE CITY OF WINNIPEG L.B.I.S., AND NO SCALE FACTOR WAS APPLIED
 - REFER TO AECOM FIELD BOOK NO. 4703
 - REFER TO DWGS CT-12 TO CT-14 FOR STREETSCAPING ELEMENTS.

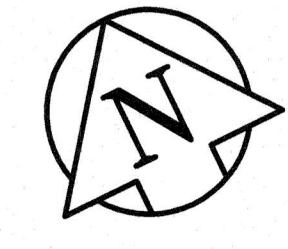
- CONSTRUCTION NOTES**
- REMOVE EXISTING PAVEMENT, INCLUDING CONCRETE STREET CAR BEDDING AND WOOD TIES, AND CONSTRUCT NEW 230mm PLAIN DOWELED CONCRETE PAVEMENT c/w 180mm BARRIER CURB (SEPERATE)
 - CONSTRUCT NEW 200mm REINFORCED CONCRETE PAVEMENT
 - REMOVE EXISTING CONCRETE SIDEWALK/PAVER STONE SIDEWALK AND CONSTRUCT NEW 100mm SIDEWALK c/w PAVING STONE BAND (REFER TO DETAIL 4,CT-14)
 - CONTRACTOR TO SAW CUT AT PROPERTY LINE FULL LENGTH OF PROJECT
 - INSTALL NEW CURB AND GUTTER INLET c/w 1800mm CATCHBASIN (SD024) AND CONNECT NEW 250mm LEAD TO EXISTING COMBINED SEWER /MANHOLE
 - INSTALL NEW CURB AND GUTTER INLET c/w CATCHPIT(SD023) AND CONNECT NEW 250mm LEAD TO NEW CATCHBASIN
 - REMOVE EXISTING CATCHBASIN AND ABANDON EXISTING LEAD
 - REMOVE EXISTING FRAME AND COVER AND INSTALL NEW FRAME AND SOLID COVER (AP-005 & AP-005)
 - CONSTRUCT NEW MONOLITHIC CURB RAMP (10mm HT. INTEGRAL)
 - CONSTRUCT NEW MODIFIED BARRIER CURB (180mm HT. INTEGRAL)
 - REMOVE EXISTING CURB AND GUTTER INLET AND LEAD
 - ADJUST EXISTING CATCHBASIN/MANHOLE FRAME AND COVER
 - ADJUST EXISTING WATERMAIN VALVE BOX TO GRADE
 - INSTALL NEW 50mm CAST IRON RISER RING
 - INSTALL 150mm SUBDRAIN 12m ON EACH SIDE OF CATCHBASIN
 - ADJUST EXISTING CURB STOP TO GRADE
 - INSTALL NEW DETECTABLE SURFACE WARNING TILES
 - PLACE 50mm ASPHALT PAVEMENT (TYPE 1A)
 - CONSTRUCT CONCRETE TREE WELL (REFER TO CT-14)
 - INSTALL NEW CURB AND GUTTER INLET c/w 1200mm CATCHBASIN (SD024) AND CONNECT NEW 250mm LEAD TO NEW CATCHBASIN
 - REMOVE EXISTING TREEWELL
 - EXISTING TRAFFIC SIGNAL POLE TO BE RELOCATED BY OTHERS.
 - EXISTING STREET LIGHT POLE TO BE RELOCATED (BY OTHERS)
 - DECORATIVE BASKETS W/ ATTACHEMENT BRACKETS (REFER TO CT-14)
 - REMOVE EXISTING TREE
 - REMOVE AND REINSTALL EXISTING PARKING PAY STATION (BY OTHERS)
 - BUS SHELTER TO BE RELOCATED (BY OTHERS)
 - INSTALL FLOW RESTRICTOR PIPE 150mm PVC SDR 35 CENTER RESTRICTOR PIPE IN CB LEAD (SD-122)
 - CONTRACTOR TO SALVAGE AND RE-INSTALL ALL GAS METER BOLLARDS DURING SIDEWALK REPLACEMENT
 - REMOVE EXISTING AND INSTALL NEW PEDESTRIAN CORRIDOR (BY OTHERS).

APEGM
Certificate of Authorization
AECOM Canada Ltd.
No. 4671 Date: 6/25/16

METRIC
WHOLE NUMBERS INDICATE MILLIMETRES
DECIMALIZED NUMBERS INDICATE METRES



CAUTION : SHALLOW GAS SERVICES



EXISTING	LEGEND - PLAN	PROPOSED	EXISTING	LEGEND - PLAN	PROPOSED	EXISTING	LEGEND - PROFILE	PROPOSED
150 mm W.M.	WATERMAIN	150 mm W.M.	---	HYDRO	---	---	C PROFILE	---
Hydrant	HYDRANT	Hydrant	---	M.T.S.	---	---	NORTHWEST GUTTER	---
Valve	VALVE	Valve	---	CONCRETE	---	---	SOUTHWEST GUTTER	---
300mm L.D.S.	LAND DRAINAGE SEWER	300mm L.D.S.	---	ASPHALT	---	---	N/W PROPERTY LINE	---
250mm W.W.S.	WASTEWATER SEWER	250mm W.W.S.	---	PROPERTY LINE	---	---	S/E PROPERTY LINE	---
Manhole	MANHOLE	Manhole	---	SURVEY BAR	---	---		---
Catch Basin	CATCH BASIN	Catch Basin	---	ELEVATION	---	---		---
Catch Pit	CATCH PIT	Catch Pit	---	TREE	---	---		---
Junctions	JUNCTIONS	Junctions	---	SIDEWALK RAMP	---	---		---
Culvert	CULVERT	Culvert	---	CONCRETE SIDEWALK	---	---		---
Gas	GAS	Gas	---	FENCE	---	---		---

LOCATION APPROVED UNDERGROUND STRUCTURES
Approval Received 2016/03/17
SUPV. U/G STRUCTURES COMMITTEE DATE

NOTE:
LOCATION OF UNDERGROUND STRUCTURES AS SHOWN ARE BASED ON THE BEST INFORMATION AVAILABLE. BUT NO GUARANTEE IS GIVEN THAT THE GIVEN LOCATIONS ARE EXACT. CONFIRMATION OF EXISTENCE AND EXACT LOCATION OF ALL SERVICES MUST BE OBTAINED FROM THE INDIVIDUAL UTILITIES BEFORE PROCEEDING WITH CONSTRUCTION.

B.M. 25 - 011 N.W. Cor. Arlington St. & Selkirk Ave. Tbl. In. Conc. foundation of King Edward Community School, 0.5m W. & 0.1 m below Tyndall Stone of most S. Ely. Cor.

AECOM

DESIGNED BY: KWR/BC
DRAWN BY: PP/PB

CHECKED BY: KWR
APPROVED BY:

HOR. SCALE: 1:250
VERTICAL: 1:10

ISSUED FOR TENDER: 02/26/2016 BC
ISSUED FOR REVIEW: 01/25/2016 BC

NO. REVISIONS DATE BY

DATE 12/03/2015

ENGINEER'S SEAL
PROVINCE OF MANITOBA
K.W. RAE
REGISTERED PROFESSIONAL ENGINEER

CONSULTANT DRAWING NO. CT-09

THE CITY OF WINNIPEG
PUBLIC WORKS DEPARTMENT
ENGINEERING DIVISION

SELKIRK AVENUE PAVEMENT RECONSTRUCTION
ARLINGTON STREET TO SALTER STREET

PLAN/PROFILE
STATION 0+990 TO STATION 1+120

CITY DRAWING NUMBER P-3471-09
SHEET 09 OF 20