

REFERENCE NOTES

- A. PAVEMENT DIMENSIONS ARE TO BACK OF CURB
- B. BASELINE IS CENTRELINE OF RIGHT-OF-WAY
- C. PROPERTY LINES OBTAINED FROM THE CITY OF WINNIPEG L.B.I.S., AND NO SCALE FACTOR WAS APPLIED
- D. REFER TO AECOM FIELD BOOK NO. 4703
- E. REFER TO DWGS CT-12 TO CT-14 FOR STREETSCAPING ELEMENTS.

| DESCRIPTION | RIM ELEV. | INVERT | | |
|-------------|-----------|--------|------|---------|
| | | EAST | WEST | SOUTH |
| CB 25 | 231.550 | | | 229.950 |
| CB 26 | 231.550 | | | 229.950 |
| CB 27 | 231.370 | | | 229.770 |
| CB 28 | 231.370 | | | 229.770 |
| CP 13 | 231.450 | | | 230.450 |

CONSTRUCTION NOTES

1. REMOVE EXISTING PAVEMENT, INCLUDING CONCRETE STREET CAR BEDDING AND WOOD TIES, AND CONSTRUCT NEW 230mm PLAIN DOWELLED CONCRETE PAVEMENT c/w 180mm BARRIER CURB (SEPARATE)
2. CONSTRUCT NEW 200mm REINFORCED CONCRETE PAVEMENT
3. REMOVE EXISTING CONCRETE SIDEWALK/PAVER STONE SIDEWALK AND CONSTRUCT NEW 100mm SIDEWALK c/w PAVING STONE BAND (REFER TO DETAILS CT-14)
4. CONTRACTOR TO SAW CUT AT PROPERTY LINE FULL LENGTH OF PROJECT
5. INSTALL NEW CURB AND GUTTER INLET c/w CATCHBASIN (SD024) ON SOUTH SIDE (AP-008 & AP-009), AND NEW CATCHBASIN (SD-025) ON NORTH SIDE c/w SOLID COVER (AP-004 & AP-005). CONNECT NEW 250mm LEAD TO EXISTING COMBINED SEWER/MANHOLE
6. INSTALL NEW CURB AND GUTTER INLET c/w CATCHPIT (SD023) AND CONNECT NEW 250mm LEAD TO NEW CATCHBASIN
7. REMOVE EXISTING CATCHBASIN AND ABANDON EXISTING LEAD
8. REMOVE EXISTING FRAME AND COVER AND INSTALL NEW FRAME AND SOLID COVER (AP-005 & AP-005)
9. CONSTRUCT NEW MONOLITHIC CURB RAMP (100mm HT. INTEGRAL)
10. CONSTRUCT NEW MODIFIED BARRIER CURB (180mm HT. INTEGRAL)
11. REMOVE EXISTING CURB AND GUTTER INLET AND LEAD
12. ADJUST EXISTING CATCHBASIN/MANHOLE FRAME AND COVER
13. ADJUST EXISTING WATERMAIN VALVE BOX TO GRADE
14. INSTALL NEW 50mm CAST IRON RISER RING
15. INSTALL 150mm SUBDRAIN 12m ON EACH SIDE OF CATCHBASIN
16. ADJUST EXISTING CURB STOP TO GRADE
17. INSTALL NEW DETECTABLE SURFACE WARNING TILES
18. PLACE 50mm ASPHALT PAVEMENT (TYPE 1A)
19. CONSTRUCT CONCRETE TREE WELL (REFER TO CT-14)
20. REMOVE EXISTING TREE
21. EXISTING TRAFFIC SIGNAL POLE TO BE RELOCATED (BY OTHERS)
22. EXISTING STREET LIGHT POLE TO BE RELOCATED (BY OTHERS)
23. INSTALL BRACKETS AND DECORATIVE BASKETS (REFER TO CT-14)
24. CONSTRUCT TEMPORARY 50mm THICK ASPHALT SIDEWALK
25. REMOVE EXISTING COMPOSITE PAVEMENT AND PLACE SUITABLE SITE FILL
26. PROPOSED PEDESTRIAN CORRIDOR (BY OTHERS)
27. REMOVE AND REINSTALL EXISTING PARKING PAY STATION (BY OTHERS)
28. CONSTRUCT 180mm BARRIER CURB (DOWELLED)
29. INSTALL FLOW RESTRICTOR PIPE 150mm PVC SDR 35 CENTER RESTRICTOR PIPE IN CB LEAD (SD-122)
30. CONTRACTOR TO SALVAGE AND RE-INSTALL ALL GAS METER BOLLARDS DURING SIDEWALK REPLACEMENT
31. REMOVE EXISTING PAVEMENT AND CONSTRUCT NEW 200mm PLAIN DOWELLED CONCRETE PAVEMENT c/w 180mm BARRIER CURB (SEPARATE)

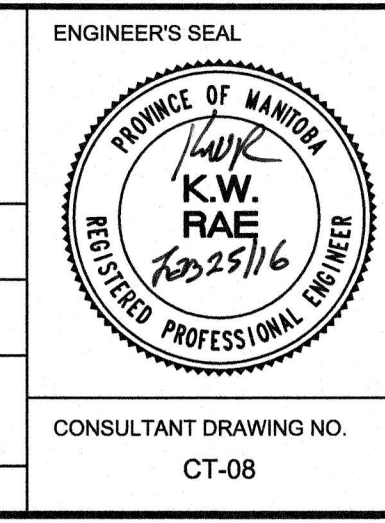


| EXISTING | LEGEND - PLAN | PROPOSED | EXISTING | LEGEND - PLAN | PROPOSED | EXISTING | LEGEND - PROFILE | PROPOSED |
|--------------|---------------------|--------------|----------|-------------------|----------|----------|-------------------|----------|
| 150 mm W.W. | WATERMAIN | 150 mm W.W. | --- | HYDRO | --- | X | C PROFILE | --- |
| 300mm L.D.S. | LAND DRAINAGE SEWER | 300mm L.D.S. | --- | CONCRETE | --- | □ | NORTH/WEST GUTTER | --- |
| 250mm W.W.S. | WASTEWATER SEWER | 250mm W.W.S. | --- | ASPHALT | --- | ○ | SOUTH/EAST GUTTER | --- |
| ○ | MANHOLE | ● | --- | PROPERTY LINE | --- | ◇ | NW PROPERTY LINE | --- |
| □ | CATCH BASIN | ■ | --- | SURVEY BAR | --- | ○ | S/E PROPERTY LINE | --- |
| ▽ | CATCH PIT | ▽ | --- | ELEVATION | (35.750) | | | |
| + | JUNCTIONS | + | --- | TREE | --- | | | |
| --- | CULVERT | --- | --- | SIDEWALK RAMP | --- | | | |
| --- | GAS | --- | --- | CONCRETE SIDEWALK | --- | | | |
| --- | LEGEND - PLAN | --- | --- | FENCE | --- | | | |

LOCATION APPROVED
UNDERGROUND STRUCTURES
Approved Record 2/16/2017
 SUPPLY STRUCTURES COMMITTEE DATE

NOTE:
 LOCATION OF UNDERGROUND STRUCTURES AS SHOWN ARE BASED ON THE BEST INFORMATION AVAILABLE, BUT NO GUARANTEE IS GIVEN THAT ALL EXISTING UTILITIES ARE SHOWN OR THAT THE GIVEN LOCATIONS ARE EXACT. CONFIRMATION OF EXISTENCE AND EXACT LOCATION OF ALL SERVICES MUST BE OBTAINED FROM THE INDIVIDUAL UTILITIES BEFORE PROCEEDING WITH CONSTRUCTION.

| | | |
|---|--|----|
| B.M. 25 - 011 N.W. Cor. Arlington St. & Selkirk Ave. Tbl. in Conc. Foundation of King Edward Community School, 0.5m ELEV. 232.212 | W. & 0.1 m below Tyndall Stone of most S.E. Cor. | |
| DESIGNED BY | KWR/BC | |
| CHECKED BY | KWR | |
| DRAWN BY | PP/PB | |
| APPROVED BY | | |
| HOR. SCALE: | 1:250 | |
| VERTICAL: | 1:10 | |
| ISSUED FOR TENDER | 02/28/2016 | BC |
| ISSUED FOR REVIEW | 04/14/2015 | KR |
| NO. REVISIONS | DATE | BY |
| 12/03/2015 | | |



THE CITY OF WINNIPEG
Winnipeg PUBLIC WORKS DEPARTMENT
 ENGINEERING DIVISION

SELKIRK AVENUE PAVEMENT RECONSTRUCTION
 ARLINGTON STREET TO SALTER STREET

PLAN/PROFILE
 STATION 0+860 TO STATION 0+990

CITY DRAWING NUMBER
 P-3471-08
 SHEET 08 OF 20

CONSULTANT DRAWING NO.
 CT-08