

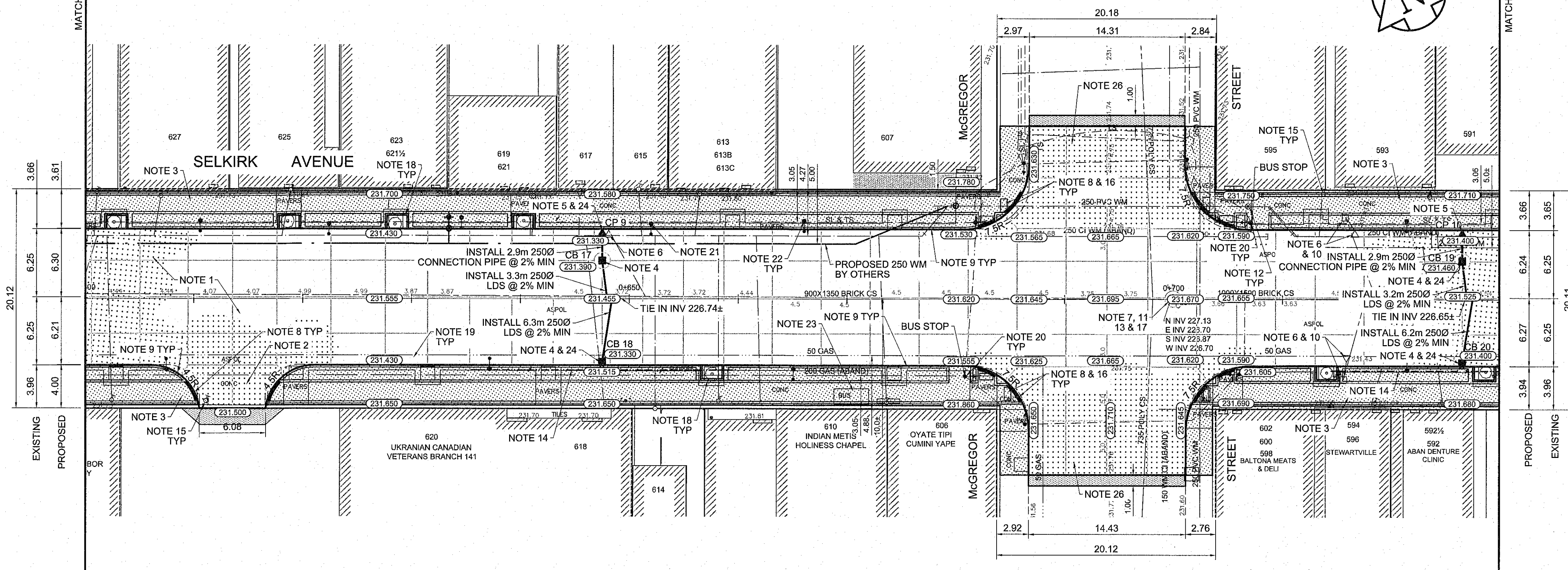
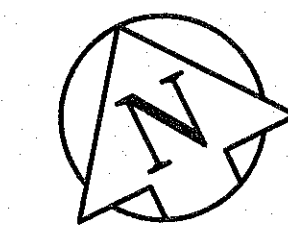
RIGHT-OF-WAY CROSS SECTION SELKIRK AVENUE
McKENZIE STREET TO ANDREWS STREET
N.T.S.

CB & CP TABLE - COMBINED SEWER				
DESCRIPTION	RIM ELEV.	INVERT		
		EAST	WEST	NORTH SOUTH
CB 17	231.390			229.790
CB 18	231.330	230.380	230.380	229.730
CB 19	231.460			229.860
CB 20	231.400	230.450	230.450	229.800
CP 9	231.330			230.330
CP 10	231.400			230.400

- REFERENCE NOTES**
- PAVEMENT DIMENSIONS ARE TO BACK OF CURB
 - BASELINE IS CENTRELINE OF RIGHT-OF-WAY
 - PROPERTY LINES OBTAINED FROM THE CITY OF WINNIPEG L.B.I.S., AND NO SCALE FACTOR WAS APPLIED
 - REFER TO AECOM FIELD BOOK NO. 4703
 - REFER TO DWGS CT-12 TO CT-14 FOR STREETSCAPING ELEMENTS.

- CONSTRUCTION NOTES**
- REMOVE EXISTING PAVEMENT, INCLUDING CONCRETE STREET CAR BEDDING AND WOOD TIES AND CONSTRUCT NEW 230mm PLAIN DOWELLED CONCRETE PAVEMENT c/w 180mm BARRIER CURB (SEPARATE)
 - CONSTRUCT NEW 200mm REINFORCED CONCRETE PAVEMENT
 - REMOVE EXISTING CONCRETE SIDEWALK/PAVER STONE SIDEWALK AND CONSTRUCT NEW 100mm SIDEWALK c/w PAVING STONE BAND (REFER TO DETAIL 1, DWG 14) CONTRACTOR TO SAW CUT AT PROPERTY LINE FULL LENGTH OF PROJECT
 - INSTALL NEW CURB AND GUTTER INLET c/w CATCHBASIN (SD024) ON SOUTH SIDE (AP-008 & AP-009), AND A NEW CATCHBASIN (SD-025) ON NORTH SIDE c/w SOLID COVER (AP-004 & AP-005). CONNECT NEW 250mm LEAD TO EXISTING COMBINED SEWER /MANHOLE
 - INSTALL NEW CURB AND GUTTER INLET c/w CATCHPIT(SD023) AND CONNECT NEW 250mm LEAD TO NEW CATCHBASIN
 - REMOVE EXISTING CATCHBASIN AND ABANDON EXISTING LEAD
 - REMOVE EXISTING FRAME AND COVER AND INSTALL NEW FRAME AND SOLID COVER (AP-004 & AP-005)
 - CONSTRUCT NEW MONOLITHIC CURB RAMP (100mm HT. INTEGRAL)
 - CONSTRUCT NEW MODIFIED BARRIER CURB (180mm HT. INTEGRAL)
 - REMOVE EXISTING CURB AND GUTTER INLET AND LEAD
 - ADJUST EXISTING CATCHBASIN/MANHOLE FRAME AND COVER
 - ADJUST EXISTING WATERMAIN VALVE BOX TO GRADE
 - INSTALL NEW 50mm CAST IRON RISER RING
 - INSTALL 150mm SUBDRAIN 12m ON EACH SIDE OF CATCHBASIN
 - ADJUST EXISTING CURB STOP TO GRADE
 - INSTALL NEW DETECTABLE SURFACE WARNING TILES
 - PLACE 50mm ASPHALT PAVEMENT (TYPE 1A)
 - CONSTRUCT CONCRETE TREE WELL (REFER TO CT-14)
 - REMOVE EXISTING TREE WELL
 - EXISTING TRAFFIC SIGNALS POLE TO BE RELOCATED (BY OTHERS)
 - EXISTING STREET LIGHT POLE TO BE RELOCATED (BY OTHERS)
 - EXISTING DECORATIVE STREET LIGHTS TO REMAIN, INSTALL BRACKETS & DECORATIVE BASKETS (REFER TO CT-14)
 - REMOVE AND REINSTALL EXISTING BUS SHELTER (BY OTHERS)
 - INSTALL FLOW RESTRICTOR PIPE 150mm PVC SDR 35 CENTER RESTRICTOR PIPE IN CB LEAD (SD-122)
 - CONTRACTOR TO SALVAGE AND RE-INSTALL ALL GAS METER BOLLARDS DURING SIDEWALK REPLACEMENT
 - REMOVE EXISTING PAVEMENT AND CONSTRUCT NEW 200mm PLAIN DOWELLED CONCRETE PAVEMENT c/w 180mm BARRIER CURB (SEPARATE)

CAUTION : SHALLOW GAS SERVICES

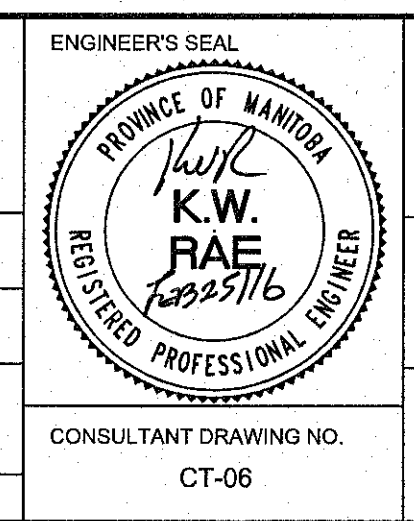


EXISTING	LEGEND - PLAN	PROPOSED	EXISTING	LEGEND - PLAN	PROPOSED	EXISTING	LEGEND - PROFILE	PROPOSED
150mm W.M.	WATERMAIN	150mm W.M.	HYDRO	HYDRO	HYDRO	—	C PROFILE	—
300mm L.D.S.	LAND DRAINAGE SEWER	300mm L.D.S.	CONCRETE	CONCRETE	CONCRETE	—	NORTH/WEST GUTTER	—
250mm W.W.S.	WASTEWATER SEWER	250mm W.W.S.	ASPHALT	ASPHALT	ASPHALT	—	SOUTH/EAST GUTTER	—
○	MANHOLE	○	PROPERTY LINE	PROPERTY LINE	PROPERTY LINE	—	N/W PROPERTY LINE	—
□	CATCH BASIN	□	SURVEY BAR	SURVEY BAR	SURVEY BAR	—	S/E PROPERTY LINE	—
▽	CATCH PIT	▽	ELEVATION	ELEVATION	ELEVATION	—		
—	JUNCTIONS	—	TREE	TREE	TREE	—		
—	CULVERT	—	SIDEWALK RAMP	SIDEWALK RAMP	SIDEWALK RAMP	—		
—	GAS	—	CONCRETE SIDEWALK	CONCRETE SIDEWALK	CONCRETE SIDEWALK	—		
—	LEGEND - PLAN	—	FENCE	FENCE	FENCE	—		

LOCATION APPROVED UNDERGROUND STRUCTURES
 APPROVE REVD 10/16/2011
 DATE

NOTE:
 LOCATION OF UNDERGROUND STRUCTURES AS SHOWN ARE BASED ON THE BEST INFORMATION AVAILABLE BUT NO GUARANTEE IS GIVEN THAT ALL EXISTING UTILITIES ARE SHOWN OR THAT THE GIVEN LOCATIONS ARE EXACT. CONFIRMATION OF EXISTENCE AND EXACT LOCATION OF ALL SERVICES MUST BE OBTAINED FROM THE INDIVIDUAL UTILITIES BEFORE PROCEEDING WITH CONSTRUCTION.

B.M. 25 - 011 N.W. Cor. Arlington St. & Selkirk Ave. Tbl. in Conc. Foundation of King Edward Community School, 0.5m ELEV. 232.212	W. & 0.1 m below Tyndall Stone of most S. Ely. Cor
DESIGNED BY	KWR/BC
CHECKED BY	KWR
DRAWN BY	PP/PB
APPROVED BY	
RELEASED FOR CONSTRUCTION BY:	
HOR. SCALE:	1:250
VERTICAL:	1:10
ISSUED FOR TENDER	02/26/2018 KR
ISSUED FOR REVIEW	01/25/2018 BC
REVISIONS	DATE BY
DATE	12/03/2015



THE CITY OF WINNIPEG
 PUBLIC WORKS DEPARTMENT
 ENGINEERING DIVISION

SELKIRK AVENUE PAVEMENT RECONSTRUCTION
 ARLINGTON STREET TO SALTER STREET

PLAN/PROFILE
 STATION 0+600 TO STATION 0+730

CITY DRAWING NUMBER
 P-3471-06
 SHEET 06 OF 20

CONSULTANT DRAWING NO.
 CT-06