

RIGHT-OF-WAY CROSS SECTION SELKIRK AVENUE
ARLINGTON STREET TO MCKENZIE STREET
N.T.S.

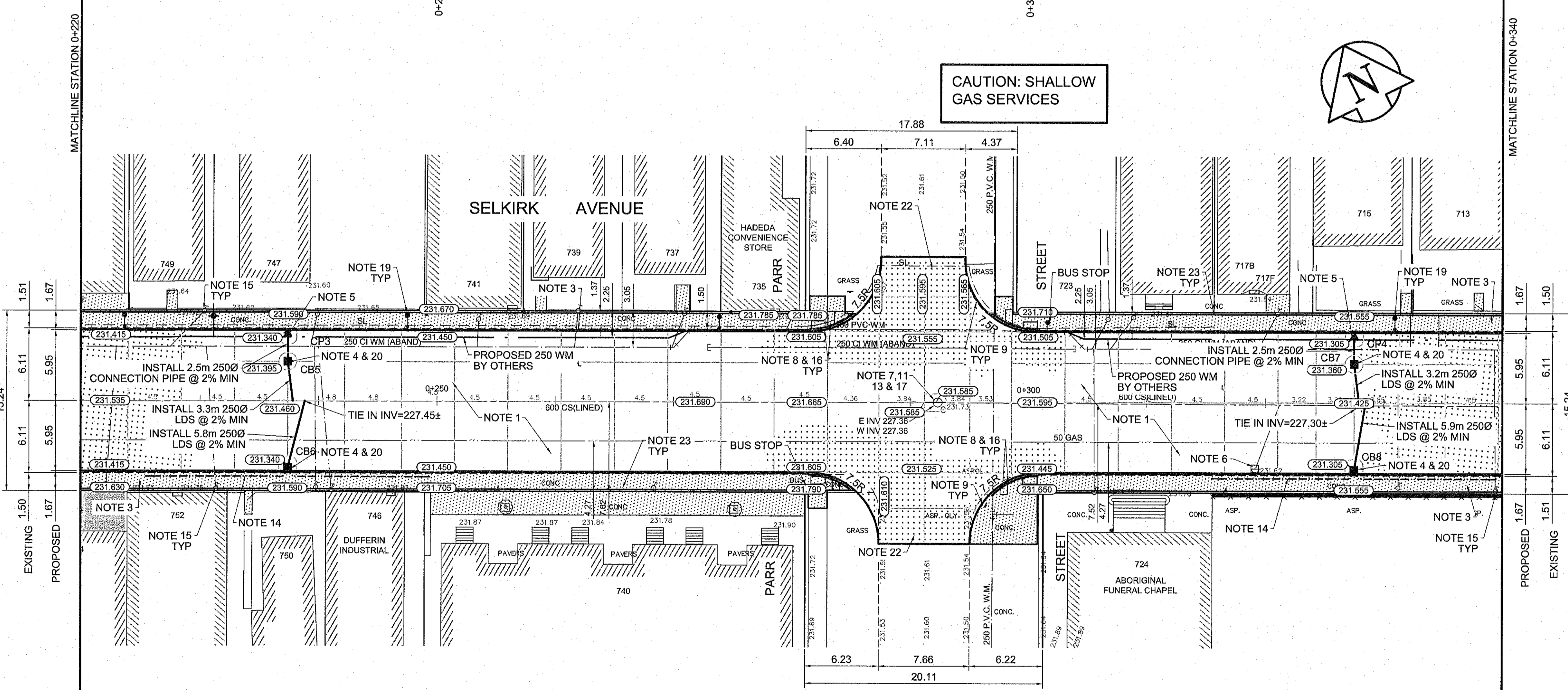
CB & CP TABLE - COMBINED SEWER					
DESCRIPTION	RIM ELEV.	INVERT			
		EAST	WEST	NORTH	SOUTH
CB 5	231.395			230.280	229.795
CB 6	231.340	230.390	230.390	229.740	
CB 7	231.360			230.240	229.760
CB 8	231.305	230.355	230.355	229.705	
CP 3	231.340				230.340
CP 4	231.305				230.305

REFERENCE NOTES

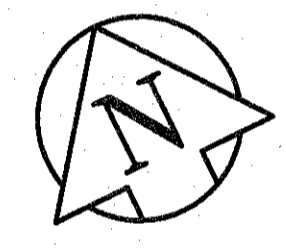
- PAVEMENT DIMENSIONS ARE TO BACK OF CURB
- BASELINE IS CENTRELINE OF RIGHT-OF-WAY
- PROPERTY LINES OBTAINED FROM THE CITY OF WINNIPEG L.B.I.S. AND NO SCALE FACTOR WAS APPLIED
- REFER TO AECOM FIELD BOOK NO. 4703
- REFER TO DWGS CT-12 TO CT-14 FOR STREETSCAPING ELEMENTS.

CONSTRUCTION NOTES

- REMOVE EXISTING PAVEMENT, INCLUDING CONCRETE STREET CAR BEDDING AND WOOD TIES AND CONSTRUCT NEW 230mm PLAIN DOWELLED CONCRETE PAVEMENT c/w 180mm BARRIER CURB (SEPARATE)
- CONSTRUCT NEW 200mm REINFORCED CONCRETE PAVEMENT
- REMOVE EXISTING CONCRETE SIDEWALK/PAVER STONE SIDEWALK AND CONSTRUCT NEW 100mm SIDEWALK c/w PAVING STONE BAND (REFER TO DETAIL 1,CT-14) CONTRACTOR TO SAW CUT AT PROPERTY LINE FULL LENGTH OF PROJECT
- INSTALL NEW CURB AND GUTTER INLET c/w CATCHBASIN (SD024) ON SOUTH SIDE (AP-008 & AP-009), AND NEW CATCHBASIN (SD-025) ON NORTH SIDE c/w SOLID COVER (AP-004 & AP-005), CONNECT NEW 250mm LEAD TO EXISTING COMBINED SEWER/MANHOLE
- INSTALL NEW CURB AND GUTTER INLET c/w CATCHPIT(SD023) AND CONNECT NEW 250mm LEAD TO NEW CATCHBASIN
- REMOVE EXISTING CATCHBASIN AND ABANDON EXISTING LEAD
- REMOVE EXISTING FRAME AND COVER AND INSTALL NEW FRAME AND SOLID COVER (AP-004 & AP-005)
- CONSTRUCT NEW MONOLITHIC CURB RAMP (10mm HT. INTEGRAL)
- CONSTRUCT NEW MODIFIED BARRIER CURB (180mm HT. INTEGRAL)
- REMOVE EXISTING CURB AND GUTTER INLET AND LEAD
- ADJUST EXISTING CATCHBASIN/MANHOLE FRAME AND COVER
- ADJUST EXISTING WATERMAIN VALVE BOX TO GRADE
- INSTALL NEW 50mm CAST IRON RISER RING
- INSTALL 150mm SUBDRAIN 12m ON EACH SIDE OF CATCHBASIN
- ADJUST EXISTING CURB STOP TO GRADE
- INSTALL NEW DETECTABLE SURFACE WARNING TILES
- PLACE 50mm ASPHALT PAVEMENT (TYPE 1A)
- EXISTING TRAFFIC SIGNAL POLE TO BE RELOCATED (BY OTHERS)
- EXISTING STREET LIGHT POLE TO BE RELOCATED (BY OTHERS)
- INSTALL FLOW RESTRICTOR PIPE 150mm PVC SDL 35 CENTER RESTRICTOR PIPE IN CB LEAD (SD-122)
- CONTRACTOR TO SALVAGE AND RE-INSTALL ALL GAS METER BOLLARDS DURING SIDEWALK REPLACEMENT.
- REMOVE EXISTING PAVEMENT AND CONSTRUCT NEW 200mm PLAIN DOWELLED CONCRETE PAVEMENT c/w 180 mm BARRIER CURB (SEPARATE)
- SUPPLY & INSTALL ORNAMENTAL POSTS w/BRACKETS & HANGING BASKETS (REFER TO CT-14)



CAUTION: SHALLOW GAS SERVICES



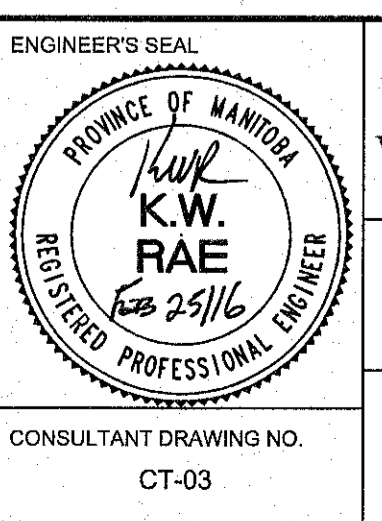
EXISTING	LEGEND - PLAN	PROPOSED	EXISTING	LEGEND - PLAN	PROPOSED	EXISTING	LEGEND - PROFILE	PROPOSED
150 mm W.M.	WATERMAIN	150 mm W.M.	---	HYDRO	---	---	C PROFILE	---
Hydrant	HYDRANT	Hydrant	---	M.T.S.	---	---	NORTHWEST GUTTER	---
Valve	VALVE	Valve	---	CONCRETE	---	---	SOUTHEAST GUTTER	---
300mm L.D.S.	LAND DRAINAGE SEWER	300mm L.D.S.	---	ASPHALT	---	---	N/W PROPERTY LINE	---
250mm W.W.S.	WASTEWATER SEWER	250mm W.W.S.	---	PROPERTY LINE	---	---	S/E PROPERTY LINE	---
Manhole	MANHOLE	Manhole	---	SURVEY BAR	---	---		
Catch Basin	CATCH BASIN	Catch Basin	---	ELEVATION	(35.750)	---		
Catch Pit	CATCH PIT	Catch Pit	---	TREE	---	---		
Junctions	JUNCTIONS	Junctions	---	SIDEWALK RAMP	---	---		
Culvert	CULVERT	Culvert	---	CONCRETE SIDEWALK	---	---		
Gas	GAS	Gas	---	FENCE	---	---		

LOCATION APPROVED UNDERGROUND STRUCTURES
 APPROVED RECD 2016/02/17
 DATE

NOTE:
 LOCATION OF UNDERGROUND STRUCTURES AS SHOWN ARE BASED ON THE BEST INFORMATION AVAILABLE, BUT NO GUARANTEE IS GIVEN THAT ALL EXISTING UTILITIES ARE SHOWN OR THAT THE GIVEN LOCATIONS ARE EXACT. CONFIRMATION OF EXISTENCE AND EXACT LOCATION OF ALL SERVICES MUST BE OBTAINED FROM THE INDIVIDUAL UTILITIES BEFORE PROCEEDING WITH CONSTRUCTION.

B.M. 25-011 N.W. Cor. Arlington St. & Selkirk Ave. Tbl. In Conc. ELEV. 232.212
 Foundation of King Edward Community School, 0.5m W. & 0.1 m below Tyndall Stone of most S. Ely. Cor.

DESIGNED BY	KWR/BC	CHECKED BY	KWR
DRAWN BY	PP/PB	APPROVED BY	
HOR. SCALE:	1:250	RELEASED FOR CONSTRUCTION BY:	
VERTICAL:	1:10	DATE	12/03/2015



THE CITY OF WINNIPEG
 PUBLIC WORKS DEPARTMENT
 ENGINEERING DIVISION

SELKIRK AVENUE PAVEMENT RECONSTRUCTION
 ARLINGTON STREET TO SALTER STREET

PLAN/PROFILE
 STATION 0+220 TO STATION 0+340

CITY DRAWING NUMBER P-3471-03
 SHEET 03 OF 20

CONSULTANT DRAWING NO. CT-03