

REFERENCE NOTES

- A. PAVEMENT DIMENSIONS ARE TO BACK OF CURB
- B. BASELINE IS CENTRE LINE RIGHT-OF-WAY
- C. PROPERTY LINES OBTAINED FROM CITY OF WINNIPEG L.B.I.S., AND NO SCALE FACTOR WAS APPLIED
- D. REFER TO AECOM FIELD BOOK NO. 4912

CONSTRUCTION NOTES

1. PLACE NEW ASPHALTIC PAVEMENT TYPE 1A (AVG THICKNESS 85mm)
2. REMOVE EXISTING ASPHALT AND PLACE NEW ASPHALTIC PAVEMENT TYPE 1A (AVG THICKNESS 85mm)
3. REMOVE EXISTING CONCRETE PAVEMENT AND CONSTRUCT NEW 150mm REINFORCED CONCRETE PAVEMENT c/w 85mm ASPHALT OVERLAY
4. REMOVE MOUNTABLE LIP CURB AND CONSTRUCT NEW CONCRETE BARRIER CURB (100mm REVEAL HT. DOWELLED)
5. REMOVE BARRIER CURB AND CONSTRUCT NEW CONCRETE MODIFIED BARRIER CURB (180mm HT. DOWELLED)
6. CONSTRUCT NEW LIP CURB (40mm HT. INTEGRAL)
7. CONSTRUCT RAMP CURB (10mm HT. INTEGRAL)
8. RENEW EXISTING 100mm CONCRETE SIDEWALK
9. REMOVE CATCH BASIN
10. REMOVE CATCH PIT
11. INSTALL NEW CURB AND GUTTER INLET (AP-008/AP-009) c/w CATCHBASIN (SD-024) AND CONNECT NEW LEAD TO EXISTING MANHOLE/SEWER
12. INSTALL NEW CURB AND GUTTER INLET (AP-008/AP-009) c/w CATCHPIT (SD-023) AND CONNECT NEW LEAD TO NEW CATCHBASIN
13. ADJUST EXISTING MANHOLE/CATCHBASIN
14. ADJUST EXISTING WATER VALVE TO GRADE
15. ADJUST CURB STOP



METRIC
WHOLE NUMBERS INDICATE MILLIMETRES
DECIMALIZED NUMBERS INDICATE METRES

150 mm W.M.	WATERMAIN	150 mm W.M.	HYDRO	—x—	—x—	—x—	—x—
Hydrant	HYDRANT	Valve	M.T.S.	CONCRETE	ASPHALT	PROPERTY LINE	SURVEY BAR
300mm L.D.S.	LAND DRAINAGE SEWER	300mm L.D.S.	CONCRETE	ASPHALT	PROPERTY LINE	SURVEY BAR	ELEVATION (35.750)
250mm W.W.S.	WASTEWATER SEWER	250mm W.W.S.	TREE	SIDEWALK RAMP	CONCRETE SIDEWALK	FENCE	
Manhole	MANHOLE	Catch Pit	JUNCTIONS	CULVERT	GAS		
Existing	LEGEND - PLAN	Proposed	Existing	LEGEND - PLAN	Proposed	Existing	LEGEND - PROFILE

LOCATION APPROVED UNDERGROUND STRUCTURES

SURV. U/G STRUCTURES COMMITTEE DATE

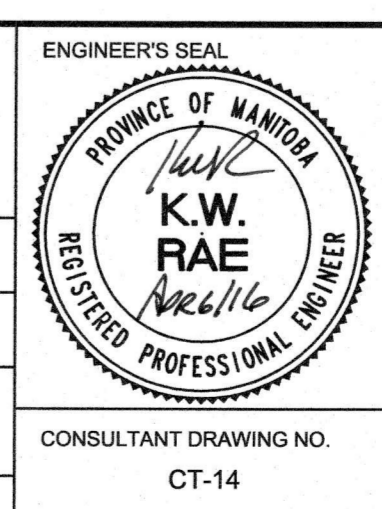
NOTE:
LOCATION OF UNDERGROUND STRUCTURES AS SHOWN ARE BASED ON THE BEST INFORMATION AVAILABLE, BUT NO GUARANTEE IS GIVEN THAT ALL EXISTING UTILITIES ARE SHOWN OR THAT THE GIVEN LOCATIONS ARE EXACT. CONFIRMATION OF EXISTENCE AND EXACT LOCATION OF ALL SERVICES MUST BE OBTAINED FROM THE INDIVIDUAL UTILITIES BEFORE PROCEEDING WITH CONSTRUCTION.

B.M. 15 - 036 83R684 N.E. Cor. Intersect Garden Dr. & Marianne Rd. 10m on top of 0.05m dia. x 2.4m iron pipe, 2.5m S. of N.L. Intersect Garden Dr. ELEV: 232.586 & 2.1m W. of E.L. Marianne Rd.

0	ISSUED FOR TENDER	04/06/2016	BC
A	ISSUED FOR REVIEW	03/30/2016	BC
NO.	REVISIONS	DATE	BY

AECOM

DESIGNED BY	SF	CHECKED BY	BC/KWR
DRAWN BY	JC/SF	APPROVED BY	
HOR. SCALE:	1:250	RELEASED FOR CONSTRUCTION BY:	
VERTICAL:	1:10	DATE:	APRIL 11/16



THE CITY OF WINNIPEG
PUBLIC WORKS DEPARTMENT
ENGINEERING DIVISION

2016 LOCAL STREET RENEWAL PROGRAM

PETRIW BAY - ROSEHILL WAY TO ROSEHILL WAY
REHABILITATION
STATION 0+300 TO ROSEHILL WAY

CITY DRAWING NUMBER
SHEET 14 OF 14

CONSULTANT DRAWING NO. CT-14