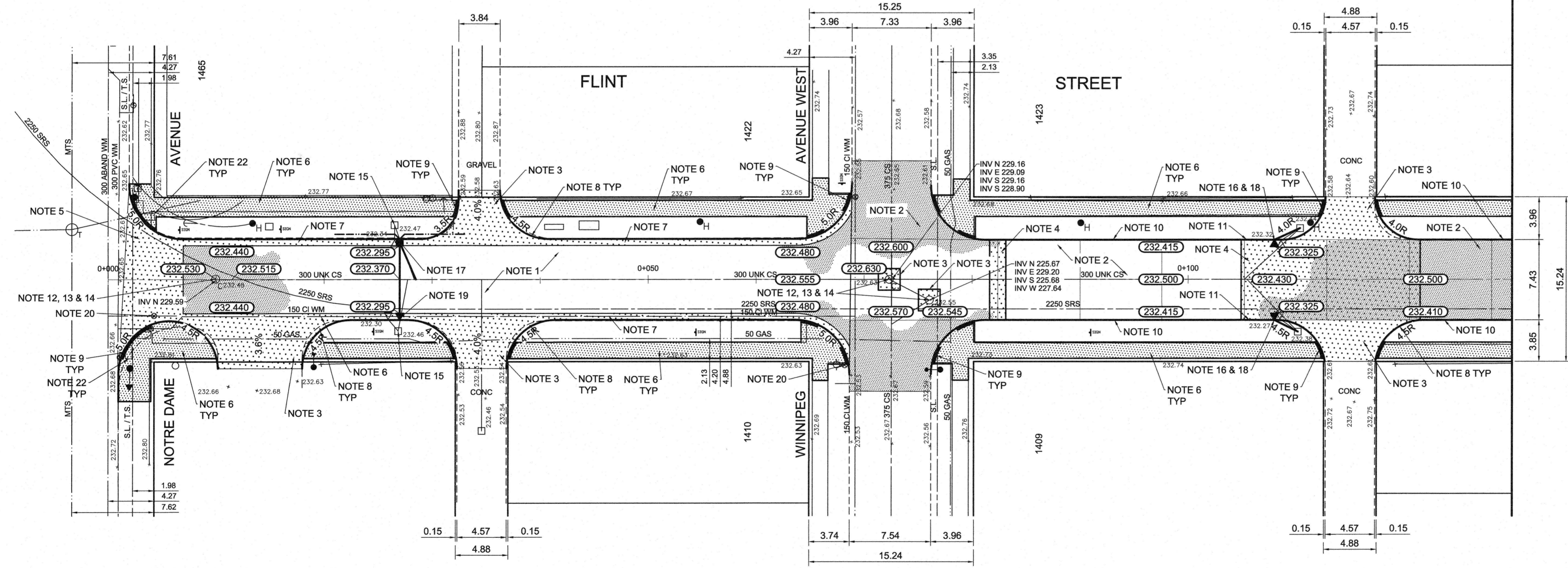


- REFERENCE NOTES**
- A. PAVEMENT DIMENSIONS ARE TO BACK OF CURB
  - B. BASELINE IS CENTRE LINE RIGHT-OF-WAY
  - C. PROPERTY LINES OBTAINED FROM CITY OF WINNIPEG L.B.I.S., AND NO SCALE FACTOR WAS APPLIED
  - D. REFER TO AECOM FIELD BOOK NO. 4910

- CONSTRUCTION NOTES**
1. REMOVE EXISTING CONCRETE PAVEMENT AND CONSTRUCT NEW 100mm ASPHALTIC PAVEMENT TYPE 1A
  2. REMOVE EXISTING ASPHALT AND PLACE NEW ASPHALTIC PAVEMENT OVERLAY TYPE 1A (85mm AVG. HT.)
  3. REMOVE EXISTING CONCRETE PAVEMENT AND CONSTRUCT NEW 150mm REINFORCED CONCRETE PAVEMENT
  4. REMOVE EXISTING CONCRETE PAVEMENT AND CONSTRUCT NEW 150mm REINFORCED CONCRETE PAVEMENT c/w 85mm ASPHALT OVERLAY TYPE 1A
  5. REMOVE EXISTING CONCRETE PAVEMENT AND CONSTRUCT NEW 200mm REINFORCED CONCRETE PAVEMENT
  6. RENEW EXISTING 100mm CONCRETE SIDEWALK
  7. CONSTRUCT NEW BARRIER CURB AND GUTTER (180mm HT.)
  8. CONSTRUCT NEW MODIFIED BARRIER CURB (180mm HT. INTEGRAL)
  9. CONSTRUCT NEW RAMP CURB (100mm HT. INTEGRAL)
  10. REMOVE EXISTING BARRIER CURB AND CONSTRUCT NEW CONCRETE BARRIER CURB (100mm REVEAL HT. DOWELLED)
  11. REMOVE EXISTING BARRIER CURB AND CONSTRUCT NEW CONCRETE BARRIER CURB (100mm REVEAL HT. SEPARATE)
  12. ADJUST EXISTING MANHOLE/CATCH BASIN TO GRADE
  13. REMOVE EXISTING FRAME AND COVER AND PLACE NEW FRAME AND SOLID COVER (AP-004/AP-005)
  14. INSTALL CAST IRON RISER RING
  15. REMOVE EXISTING CATCH BASIN, CATCH PIT AND ABANDON LEAD
  16. REMOVE EXISTING CATCH PIT
  17. INSTALL NEW CURB AND GUTTER INLET c/w CATCHBASIN (SD-024) AND CONNECT NEW LEAD TO EXISTING SEWER
  18. INSTALL NEW CURB AND GUTTER INLET c/w CATCHPIT (SD-023) AND CONNECT NEW LEAD TO EXISTING CATCHBASIN
  19. INSTALL NEW CURB AND GUTTER INLET c/w CATCHPIT (SD-023) AND CONNECT NEW LEAD TO NEW CATCHBASIN
  20. ADJUST WATER VALVE TO GRADE
  21. ADJUST CURB STOP
  22. INSTALL DETECTABLE SURFACE WARNING TILE



**METRIC**  
WHOLE NUMBERS INDICATE MILLIMETRES  
DECIMALIZED NUMBERS INDICATE METRES

EXISTING	LEGEND - PLAN	PROPOSED	EXISTING	LEGEND - PLAN	PROPOSED	EXISTING	LEGEND - PROFILE	PROPOSED
	WATERMAIN			HYDRO			C PROFILE	
	HYDRANT			CONCRETE			OUTSIDE GUTTER	
	VALVE			ASPHALT			INSIDE GUTTER	
	LAND DRAINAGE SEWER			PROPERTY LINE			NW PROPERTY LINE	
	WASTEWATER SEWER			SURVEY BAR			S/E PROPERTY LINE	
	MANHOLE			ELEVATION				
	CATCH BASIN			TREE				
	CATCH PIT			SIDEWALK RAMP				
	JUNCTIONS			CONCRETE SIDEWALK				
	CULVERT			FENCE				
	GAS							

**LOCATION APPROVED UNDERGROUND STRUCTURES**

SUPV. U/G STRUCTURES COMMITTEE DATE

**NOTE:**  
LOCATION OF UNDERGROUND STRUCTURES AS SHOWN ARE BASED ON THE BEST INFORMATION AVAILABLE. BUT NO GUARANTEE IS GIVEN THAT ALL EXISTING UTILITIES ARE SHOWN OR THAT THE GIVEN LOCATIONS ARE EXACT. CONFIRMATION OF EXISTENCE AND EXACT LOCATION OF ALL SERVICES MUST BE OBTAINED FROM THE INDIVIDUAL UTILITIES BEFORE PROCEEDING WITH CONSTRUCTION.

B.M. 36-031 S.E. Cor. Notre Dame Ave. & Winnipeg Ave. W., Tblt. ELEV. 233.527  
in S. Conc. foundation No. 1485 Notre Dame Ave., 1m E. & 0.3m below Conc. blocks of S.W. Cor. Bldg.

NO.	REVISIONS	DATE	BY
0	ISSUED FOR TENDER	04/06/2016	BC
A	ISSUED FOR REVIEW	03/30/2016	BC

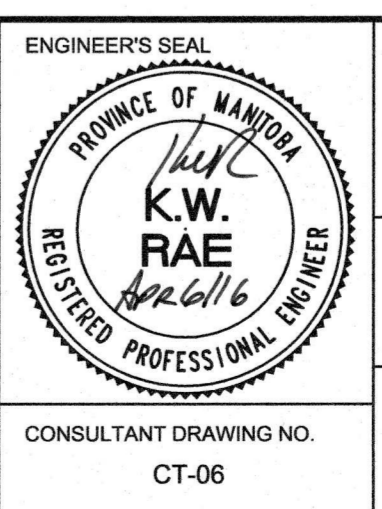
**AECOM**

DESIGNED BY: BC/SS  
DRAWN BY: JC/SS

CHECKED BY: BC/KWR  
APPROVED BY:

HOR. SCALE: 1:250  
VERTICAL: 1:10

RELEASED FOR CONSTRUCTION BY: [Signature]  
DATE: APRIL 11/16



**THE CITY OF WINNIPEG**  
PUBLIC WORKS DEPARTMENT  
ENGINEERING DIVISION

2016 LOCAL STREET RENEWAL PROGRAM

FLINT STREET - NOTRE DAME AVENUE TO WILLIAM AVENUE WEST  
ASPHALT RECONSTRUCTION/REHABILITATION  
NOTRE DAME AVENUE TO STATION 0+130

CITY DRAWING NUMBER: SHEET 06 OF 14

CONSULTANT DRAWING NO. CT-06