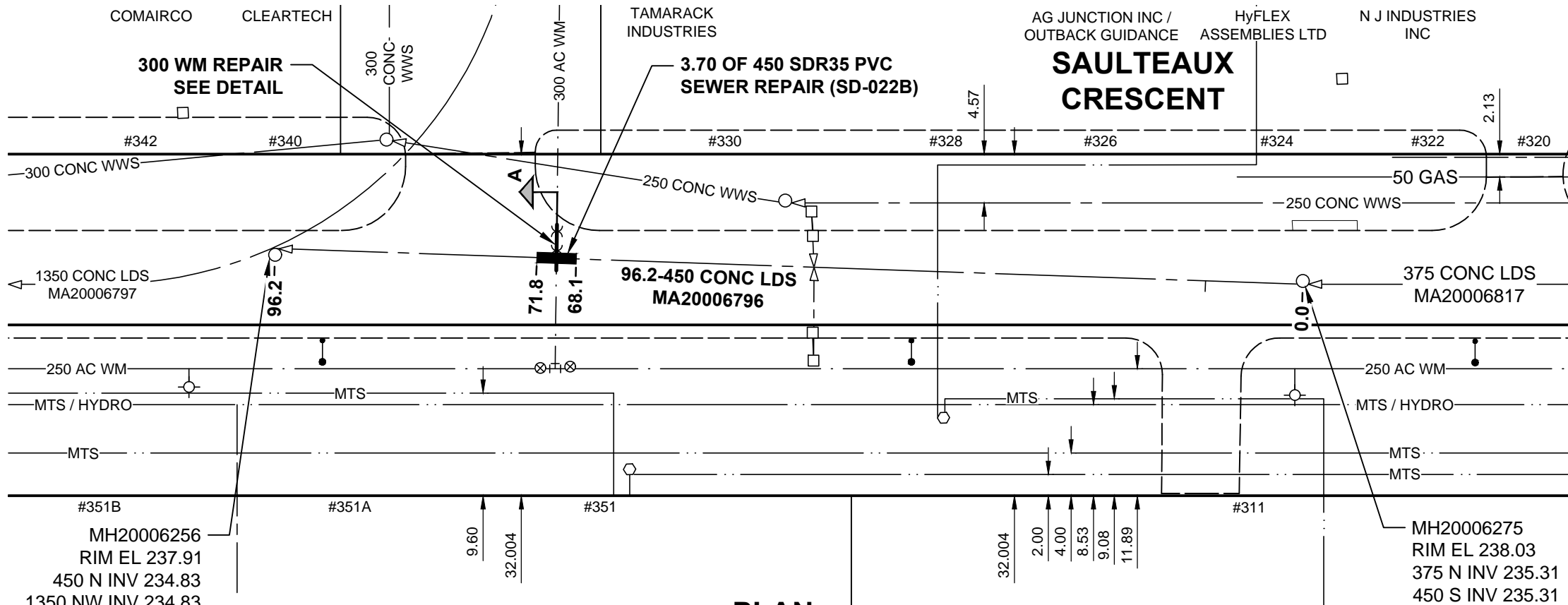


ANSI B SIZE 11" x 17" (279mm x 432mm)

PLOT: 4/7/2016 1:55:22 PM

FILE NAME: W160001-EPR Saulteaux-01.dwg Saved By: dlane



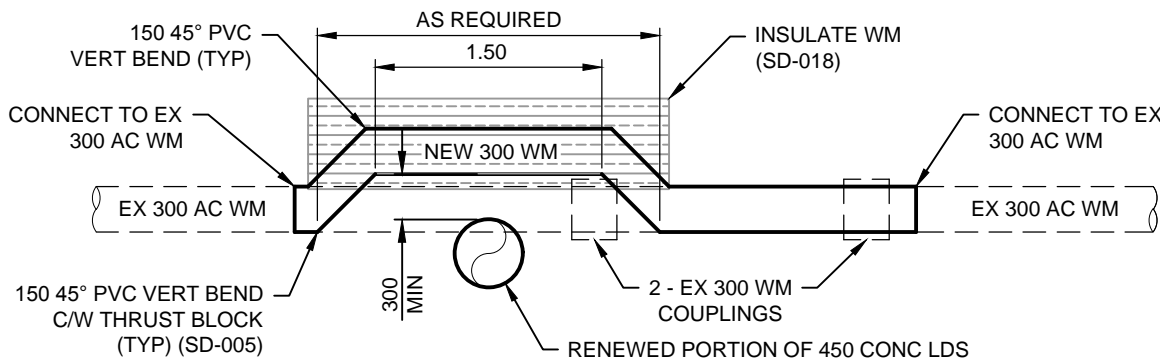
PLAN
SCALE: 1:500



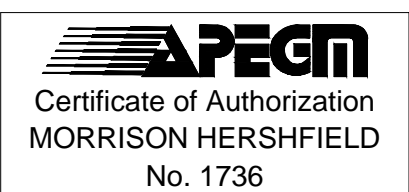
SEWER JUNCTION INFORMATION FROM SEWER VIDEO INSPECTION

SEWER ID MA20006796

DISTANCE FROM MH ID MH20006275		
DISTANCE	DIAMETER	CLOCK
9.1	200	09
45.8	150	10
45.8	200	02



A 300 AC WM REPAIR DETAIL
SCALE: 1:50



METRIC
WHOLE NUMBERS INDICATE MILLIMETRES
DECIMALIZED NUMBERS INDICATE METRES

BID OPPORTUNITY No. 163-2016

LOCATION APPROVED UNDERGROUND STRUCTURES

SUPR. U/G STRUCTURES	DATE

NOTE:
LOCATION OF UNDERGROUND STRUCTURES AS SHOWN ARE BASED ON THE BEST INFORMATION AVAILABLE BUT NO GUARANTEE IS GIVEN THAT ALL EXISTING UTILITIES ARE SHOWN OR THAT THE GIVEN LOCATIONS ARE EXACT. CONFIRMATION OF EXISTENCE AND EXACT LOCATION OF ALL SERVICES MUST BE OBTAINED FROM THE INDIVIDUAL UTILITIES BEFORE PROCEEDING WITH CONSTRUCTION.

BM ELEV	39-034 238.277 m	S.E. Cor. Moray St. & Saulteaux Cres., Tblt. in N. Conc. foundation No. 737 Moray St., 2 m E. & 0.1 m below Conc. blocks of N.W. Cor. of Bldg.
B	ISSUED FOR TENDER	16/04/07 HAK
A	ISSUED FOR CLIENT REVIEW	16/03/22 HAK
No.	REVISIONS	YY/MM/DD BY

DESIGNED BY	HAK	CHECKED BY	HAK
DRAWN BY	DML	APPROVED BY	RPB
HOR. SCALE	1:500	RELEASED FOR CONSTRUCTION	
VERT. SCALE		DATE	16/03/18

PROFESSIONAL'S SEAL

CONSULTANT DRAWING No.
W160001-EPR Saulteaux-01.dwg

2016 LOCAL STREETS PACKAGE
SAULTEAUX CRESCENT (W LEG)
450 CONCRETE LDS POINT REPAIR
3rd MH N OF MURRAY PARK RD TO
2nd MH N OF MURRAY PARK RD

SHEET	OF
1	1
CITY DRAWING NUMBER	
LD-7833	