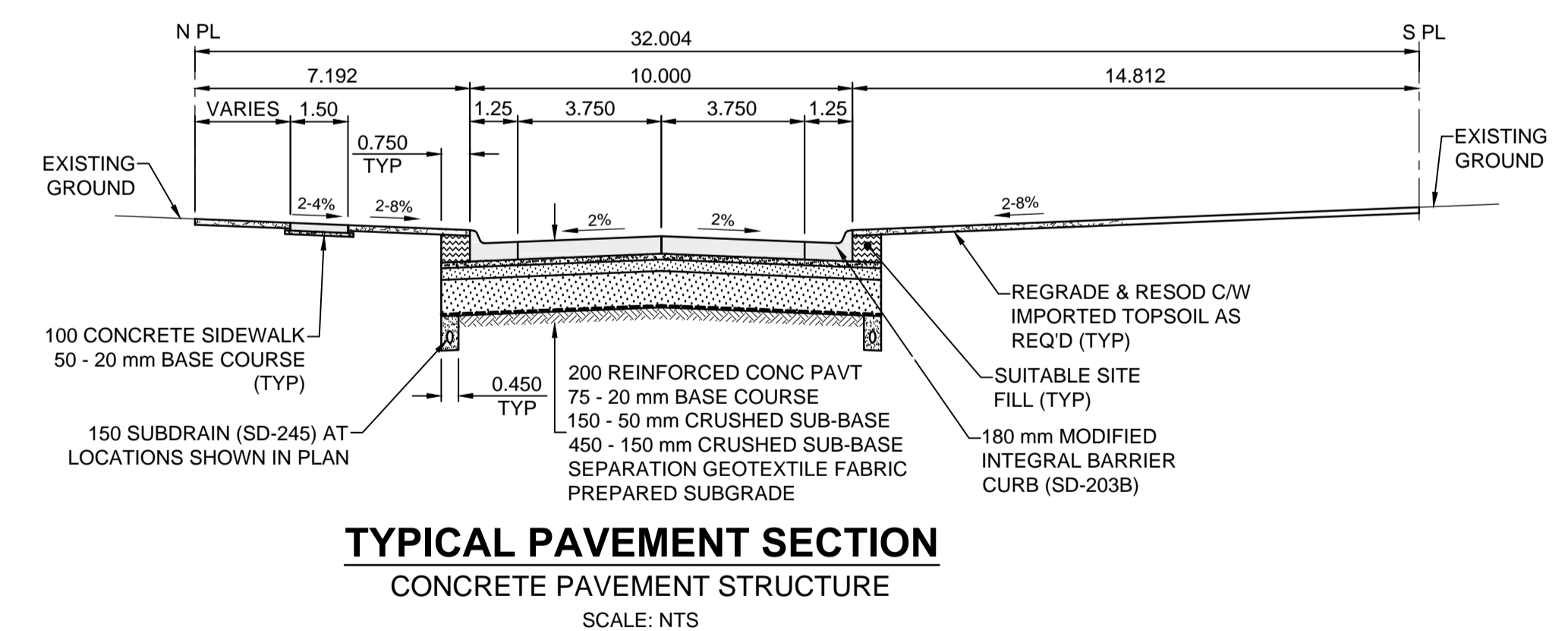


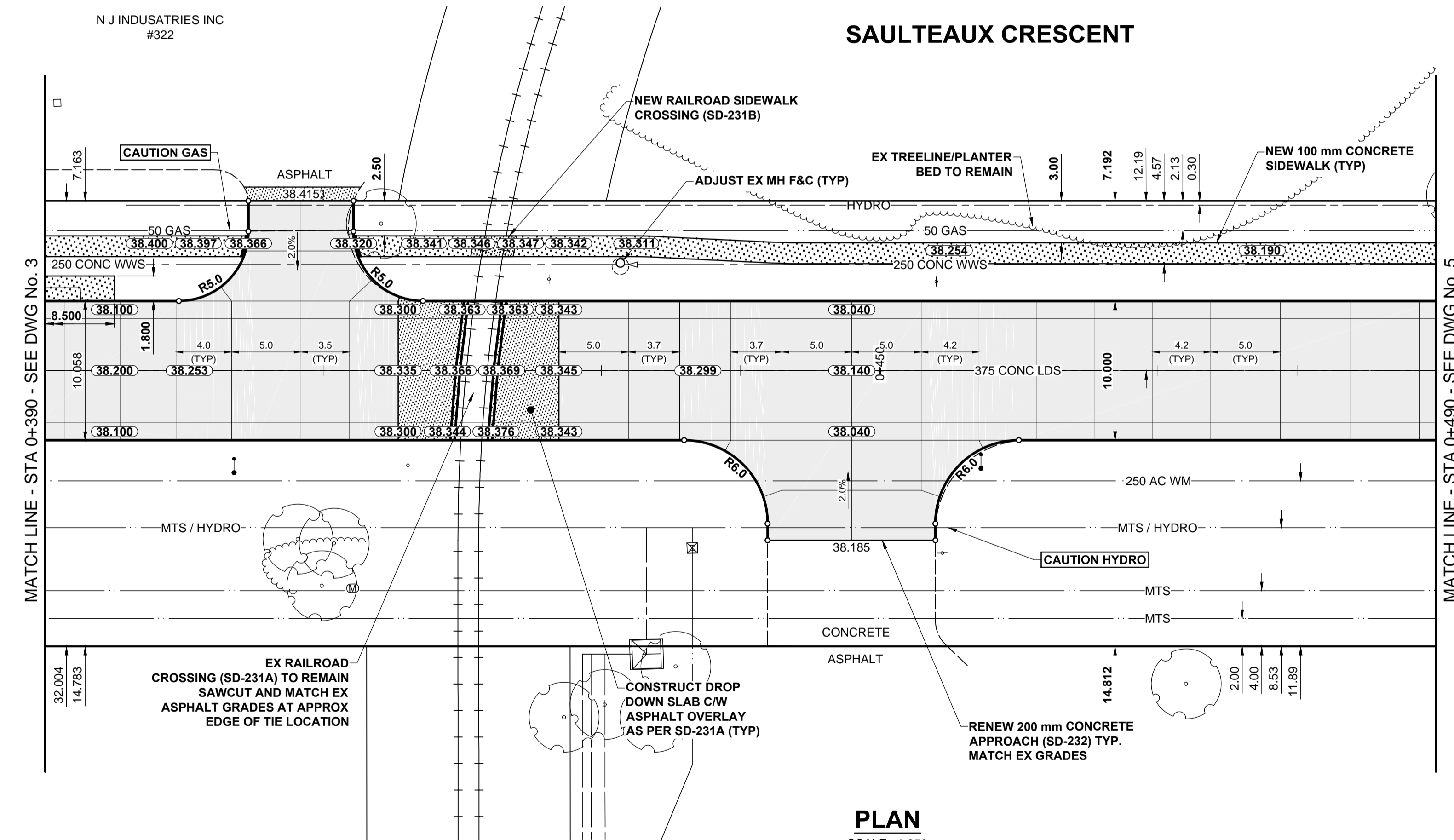
DETAIL
SCALE: H=1:50, V=1:2.0

- NOTES**
- ADJUST MH AND CB RIMS TO NEW GRADES.
 - LAMP STANDARDS, HYDRO POLES, AND ANCHORS THAT REQUIRE TEMPORARY SUPPORT, REMOVAL OR REPLACEMENT, TO BE DONE SO AT THE EXPENSE OF THE CONTRACTOR AS NECESSARY.
 - CONTRACTOR TO REGRADE/RENEW EXISTING PRIVATE SIDEWALKS TO LIMITS AS SHOWN. SIDEWALKS TO BE RENEWED WITH CONCRETE UNLESS NOTED OTHERWISE.
 - CONTRACTOR TO TAKE PRECAUTIONARY STEPS TO PROTECT EXISTING TREES WITHIN THE LIMITS OF CONSTRUCTION FROM DAMAGE FROM CONSTRUCTION ACTIVITIES AS OUTLINED IN THE SPECIFICATIONS.
 - CONTRACTOR TO CONFIRM THE LOCATION OF ALL UTILITIES/SERVICES IN THE FIELD PRIOR TO CONSTRUCTION.
 - CB SD-023 & SD-024 OFFSETS ARE DIMENSIONED TO BOC. CB SD-025 OFFSETS ARE DIMENSIONED OIC.
 - IN GENERAL, PAVEMENT AND SIDEWALK AREAS TO BE REMOVED. MATCH RECONSTRUCTION LIMITS.
 - REFER TO BID OPPORTUNITY FOR DETAILS REGARDING TRAFFIC MANAGEMENT.
 - ALL EXISTING LONG WATER SERVICES TO BE INSULATED (SD-018). REFER TO BID OPPORTUNITY FOR FURTHER REQUIREMENTS.
 - ADD 200.000m TO ABBREVIATED ELEVATIONS TO OBTAIN GEODETIC ELEVATIONS.
 - MODIFIED BARRIER CURB & GUTTER INLET FRAME & COVER TF-122.
 - CP SAFETY RULES APPLY. REFER TO SPECIFICATION. INCLUDES CP FLAGGING AND SUPERVISION REQUIREMENTS.



TYPICAL PAVEMENT SECTION
CONCRETE PAVEMENT STRUCTURE
SCALE: NTS

SAULTEAUX CRESCENT



PLAN
SCALE: 1:250

METRIC

WHOLE NUMBERS INDICATE MILLIMETRES
DECIMALIZED NUMBERS INDICATE METRES

EXISTING	LEGEND - PLAN	NEW	EXISTING	LEGEND - PLAN	NEW	EXISTING	LEGEND - PLAN	NEW
---	GAS	○	MANHOLE	●	CONCRETE PAVEMENT	□	LOCATION APPROVED	BM 39-034
- - -	MTS / PEDESTAL	□	CATCH BASIN / CATCH PIT	■	CONC SIDEWALK / MEDIAN	□	UNDERGROUND STRUCTURES	39-034
- - -	HYDRO / CABINET	△	CURB INLET WITH BOX	▲	ASPHALT PAVEMENT	□	DATE	16/03/01
- - -	CATV / FIBRE OPTIC	○	TREE	▲	PAVING STONE	□	DATE	16/01/27
- - -	TRAFFIC SIGNALS / PIT	○	TEST HOLE	▲	GRAVEL	□	DATE	16/01/27
- - -	LAND DRAINAGE SEWER	○	PROPERTY LINE	▲	RAMP CURB	□	DATE	16/01/27
- - -	SANITARY/COMBINED SEWER	○	SURVEY BAR	▲	PLANING / REMOVAL	□	DATE	16/01/27
- - -	CB LEAD / SSP / DCP	○	FENCE	▲		□	DATE	16/01/27
- - -	WATER MAIN	○	BOC / EDGE OF PAVEMENT	▲		□	DATE	16/01/27
- - -	SUBDRAIN	○	ELEVATION	▲		□	DATE	16/01/27
- - -	DITCH	○	TRAFFIC SIGN	▲		□	DATE	16/01/27
- - -		○		▲		□	DATE	16/01/27

LOCATION APPROVED
UNDERGROUND STRUCTURES

DATE

NOTE:
LOCATION OF UNDERGROUND STRUCTURES AS SHOWN ARE BASED ON THE BEST INFORMATION AVAILABLE BUT NO GUARANTEE IS GIVEN THAT ALL EXISTING UTILITIES ARE SHOWN OR THAT THE GIVEN LOCATIONS ARE EXACT. CONFIRMATION OF EXISTENCE AND EXACT LOCATION OF ALL SERVICES MUST BE OBTAINED FROM THE INDIVIDUAL UTILITIES BEFORE PROCEEDING WITH CONSTRUCTION.

No.	REVISIONS	DATE	BY
B	ISSUED FOR TENDER	16/04/07	RPB
A	ISSUED FOR CLIENT REVIEW	16/03/01	RPB

DESIGNED BY	CHECKED BY	DRAWN BY	APPROVED BY	RELEASED FOR CONSTRUCTION
RPB	WRJ	KMB	BWB	
HOR SCALE: 1:250		VERT SCALE: 1:10		DATE: 16/01/27

PROFESSIONAL'S SEAL
PROVINCE OF MANITOBA
REGISTERED PROFESSIONAL ENGINEER
R.P. BRUCE
CONSULTANT FILE NAME
W160001-Saulteaux-PP-04.dwg

THE CITY OF WINNIPEG
PUBLIC WORKS DEPARTMENT
ENGINEERING DIVISION

2016 LOCAL STREETS PACKAGE
SAULTEAUX CRESCENT
MURRAY PARK RD TO MORAY ST
CONCRETE RECONSTRUCTION
HORIZONTAL AND VERTICAL ALIGNMENT
STA 0+390 TO 0+490

CITY DRAWING NUMBER: N/A
SHEET 4 OF 13
DRAWING No. 4 REV B

BID OPPORTUNITY No. 163-2016