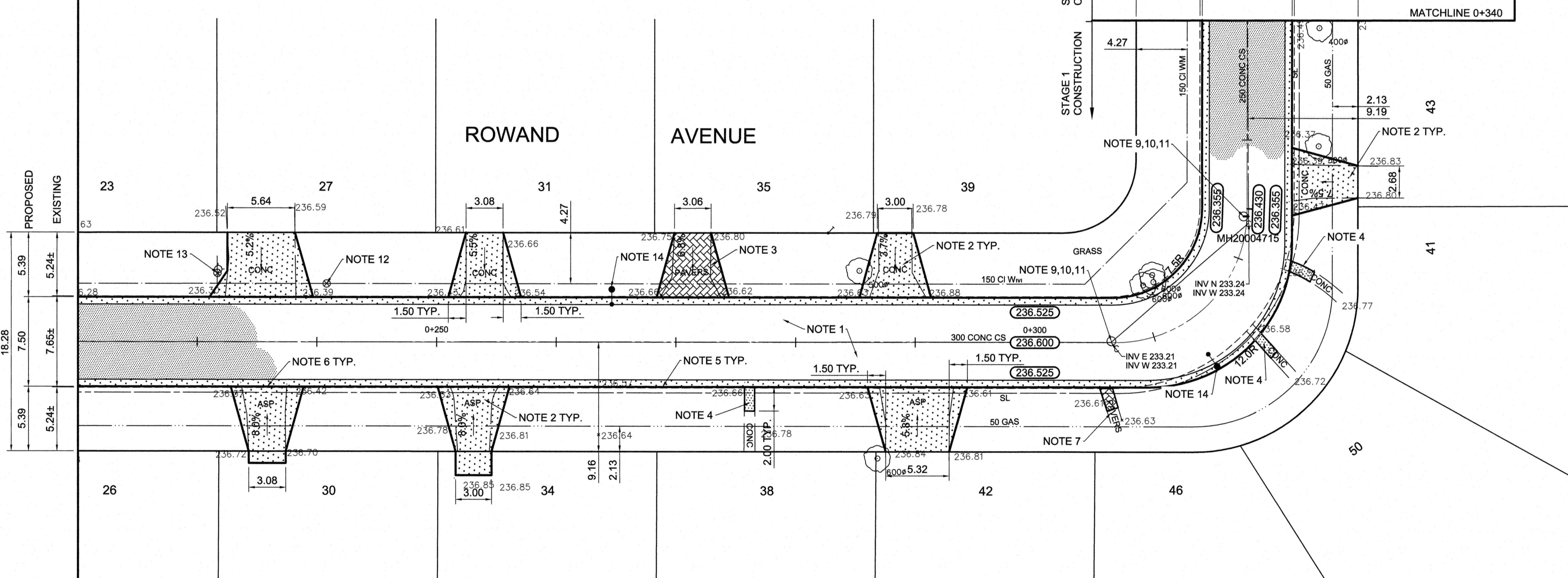
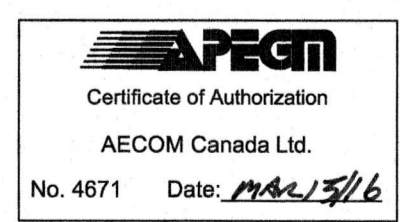


TYPICAL CROSS SECTION



- REFERENCE NOTES**
- PAVEMENT DIMENSIONS ARE TO BACK OF CURB
 - BASELINE IS CENTRE LINE RIGHT-OF-WAY
 - PROPERTY LINES OBTAINED FROM CITY OF WINNIPEG L.B.I.S., AND NO SCALE FACTOR WAS APPLIED
 - REFER TO AECOM FIELD BOOK NO. 4909
- CONSTRUCTION NOTES**
- REMOVE EXISTING CONCRETE PAVEMENT AND CONSTRUCT NEW 100mm ASPHALTIC PAVEMENT (TYPE 1A)
 - REMOVE EXISTING CONCRETE / ASPHALT PAVEMENT AND CONSTRUCT NEW 150mm REINFORCED CONCRETE PAVEMENT
 - REMOVE AND REINSTALL EXISTING PAVING STONES AND CONSTRUCT 150mm CONCRETE BARRIER CURB EDGING
 - RENEW EXISTING 100mm CONCRETE SIDEWALK
 - CONSTRUCT NEW BARRIER CURB AND GUTTER (180mm HT.)
 - CONSTRUCT NEW LIP CURB AND GUTTER (40mm HT. INTEGRAL)
 - REMOVE AND RE-INSTALL EXISTING PAVING STONES
 - INSTALL 150mm SUBDRAIN
 - REMOVE EXISTING FRAME AND COVER AND PLACE NEW FRAME AND SOLID COVER
 - ADJUST EXISTING MANHOLE TO GRADE
 - INSTALL NEW CAST IRON RISER RING
 - ADJUST EXISTING WATER VALVE TO GRADE
 - ADJUST EXISTING CURB STOP
 - RELOCATE EXISTING LIGHT STANDARD



METRIC
WHOLE NUMBERS INDICATE MILLIMETRES
DECIMALIZED NUMBERS INDICATE METRES

150 mm W.M.		300mm L.D.S.		250mm W.W.S.		HYDRO		C PROFILE	
	WATERMAIN HYDRANT		VALVE		LAND DRAINAGE SEWER		MANHOLE		OUTSIDE GUTTER
	CATCH BASIN		CATCH PIT		JUNCTIONS		SURVEY BAR		INSIDE GUTTER
	CULVERT GAS		TREE		SIDEWALK RAMP		CONCRETE SIDEWALK FENCE		N/W PROPERTY LINE
	EXISTING		PROPOSED		EXISTING		PROPOSED		EXISTING
	LEGEND - PLAN		LEGEND - PLAN		LEGEND - PROFILE		LEGEND - PROFILE		LEGEND - PROFILE

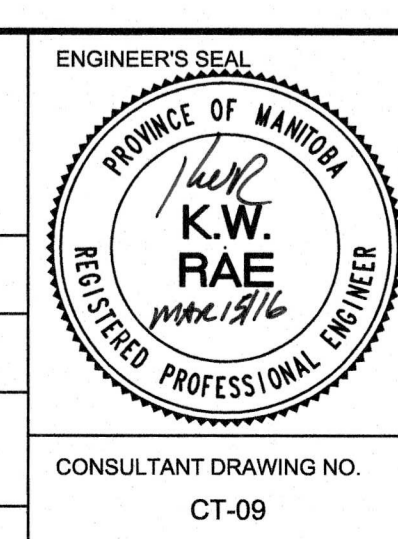
LOCATION APPROVED UNDERGROUND STRUCTURES

SUPV. U/G STRUCTURES COMMITTEE DATE

NOTE:
LOCATION OF UNDERGROUND STRUCTURES AS SHOWN ARE BASED ON THE BEST INFORMATION AVAILABLE. BUT NO GUARANTEE IS GIVEN THAT ALL EXISTING UTILITIES ARE SHOWN OR THAT THE GIVEN LOCATIONS ARE EXACT. CONFIRMATION OF EXISTENCE AND EXACT LOCATION OF ALL SERVICES MUST BE OBTAINED FROM THE INDIVIDUAL UTILITIES BEFORE PROCEEDING WITH CONSTRUCTION.

B.M. 39 - 057 83R611 NE cor Portage & Strathmillan. Tbt on pipe. On North line Portage & 2m W of East Limit Strathmillan Rd along North line of Portage Ave

DESIGNED BY	BC	CHECKED BY	KWR
DRAWN BY	JT/JC/PB	APPROVED BY	
HOR. SCALE:	1:250	RELEASED FOR CONSTRUCTION BY:	
VERTICAL:	1:10	DATE	MAR 15/16



THE CITY OF WINNIPEG
PUBLIC WORKS DEPARTMENT
ENGINEERING DIVISION

2016 LOCAL STREET RENEWAL PROGRAM

ROWAND AVENUE - MOUNT ROYAL RD TO MOUNT ROYAL RD
ASPHALT RECONSTRUCTION
STATION 0+220 TO STATION 0+340

CITY DRAWING NUMBER: SHEET 09 OF 19

CONSULTANT DRAWING NO. CT-09