

PRELIMINARY
NOT TO BE USED FOR CONSTRUCTION

CONSTRUCTION NOTES
1) ALL STREET RADIUS CURB UNDER 15M RADIUS SHALL BE REPLACED AS MODIFIED OR AS DIRECTED BY THE CONTRACT ADMINISTRATOR.
2) TAKE PRECAUTION TO AVOID DAMAGE TO GAS UTILITY INSTALLATIONS.
3) INSTALL DETECTABLE WARNING SURFACE TILES AT CURB RAMPS AS PER CW 3326

WARNING
IF POWER EQUIPMENT OR EXPLOSIVES ARE TO BE USED FOR EXCAVATION ON THIS PROJECT THE CONTRACTOR MUST:
1) OBTAIN CLEARANCE FROM THE GAS UTILITY PRIOR TO EXCAVATION.
2) TAKE PRECAUTION TO AVOID DAMAGE TO GAS UTILITY INSTALLATIONS.
SEE PROVINCIAL REGULATION 210/72 FOR DETAILS

BID OPPORTUNITY NO. 12-2016

HYDRANT	+	LDS/WWS	---	SIDWALK BLOCKS	
VALVE	•	WATERMAIN	---	PAVING STONES	
CURB STOP	•	GAS	---	ASPHALT OVERLAY	
CONCRETE SIDWALK	---	HYDRO/STREET LIGHTS	---	FENCE	---
O.L.S.	•	CONCRETE	---	SOD	---
MANHOLE	○	CURB RENEWAL	---	LEGEND - PLAN	---
CATCH BASIN	□	ELEVATIONS	[231.000]	PROPOSED	---
CURB INLET	▲	PROPERTY LINE	---	NORTH GUTTER	---
HYDRO POLE	+	SURVEY BAR	---	CENTER LINE	---
TRAFFIC SIGNAL POLE	+	GEODETIC BENCH MARK	---	SOUTH GUTTER	---
MMA MARKINGS	---	RAMP CURB	---	NORTH SIDEWALK	---
EXISTING	---	LEGEND - PLAN	---	SOUTH SIDEWALK	---
LEGEND - PLAN	---	PROPOSED	---	LEGEND - PROFILE	---
EXISTING	---	LEGEND - PROFILE	---	PROPOSED	---

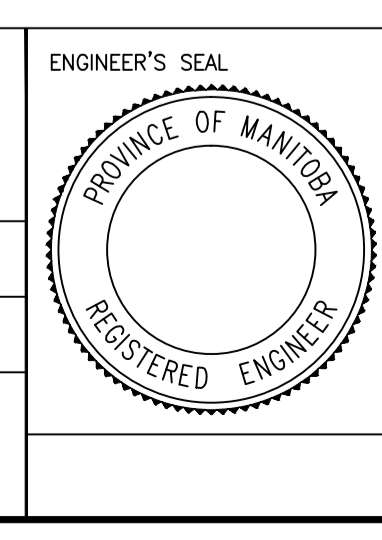
LOCATION APPROVED UNDERGROUND STRUCTURES

SUPR. U/G STRUCTURES	DATE
IB @ NE CORNER LOGAN & MILTON	232.143
2	SUBMIT FOR ENGINEERS APPROVAL 05/02/16 E.H.
1	ISSUED FOR PLAN APPROVAL 04/11/16 E.H.
NO.	REVISIONS DATE BY

NOTE:
LOCATION OF UNDERGROUND STRUCTURES AS SHOWN ARE BASED ON THE BEST INFORMATION AVAILABLE, BUT NO GUARANTEE IS GIVEN THAT ALL EXISTING UTILITIES ARE SHOWN OR THAT THE GIVEN LOCATIONS ARE EXACT. CONFIRMATION OF EXISTENCE AND EXACT LOCATION OF ALL SERVICES MUST BE OBTAINED FROM THE INDIVIDUAL UTILITIES BEFORE PROCEEDING WITH CONSTRUCTION.

ENGINEERING DIVISION
TECHNOLOGY SERVICES BRANCH
106 - 1155 PACIFIC AVE

DESIGNED BY	E.H. & M.D.	CHECKED BY	
DRAWN BY	E.H. & M.D.	APPROVED BY	
HOR. SCALE:	1 : 250	DATE	2016/05/02
VERTICAL:	1 : 10		



THE CITY OF WINNIPEG
PUBLIC WORKS DEPARTMENT

LOGAN AVENUE
FROM KEEWATIN STREET TO BLAKE STREET
CONCRETE RECONSTRUCTION AND ASSOCIATED WORKS
FROM STA. 4+00 TO STA. 5+50

CITY DRAWING NUMBER P-3473-03
SHEET 3 OF 5

3