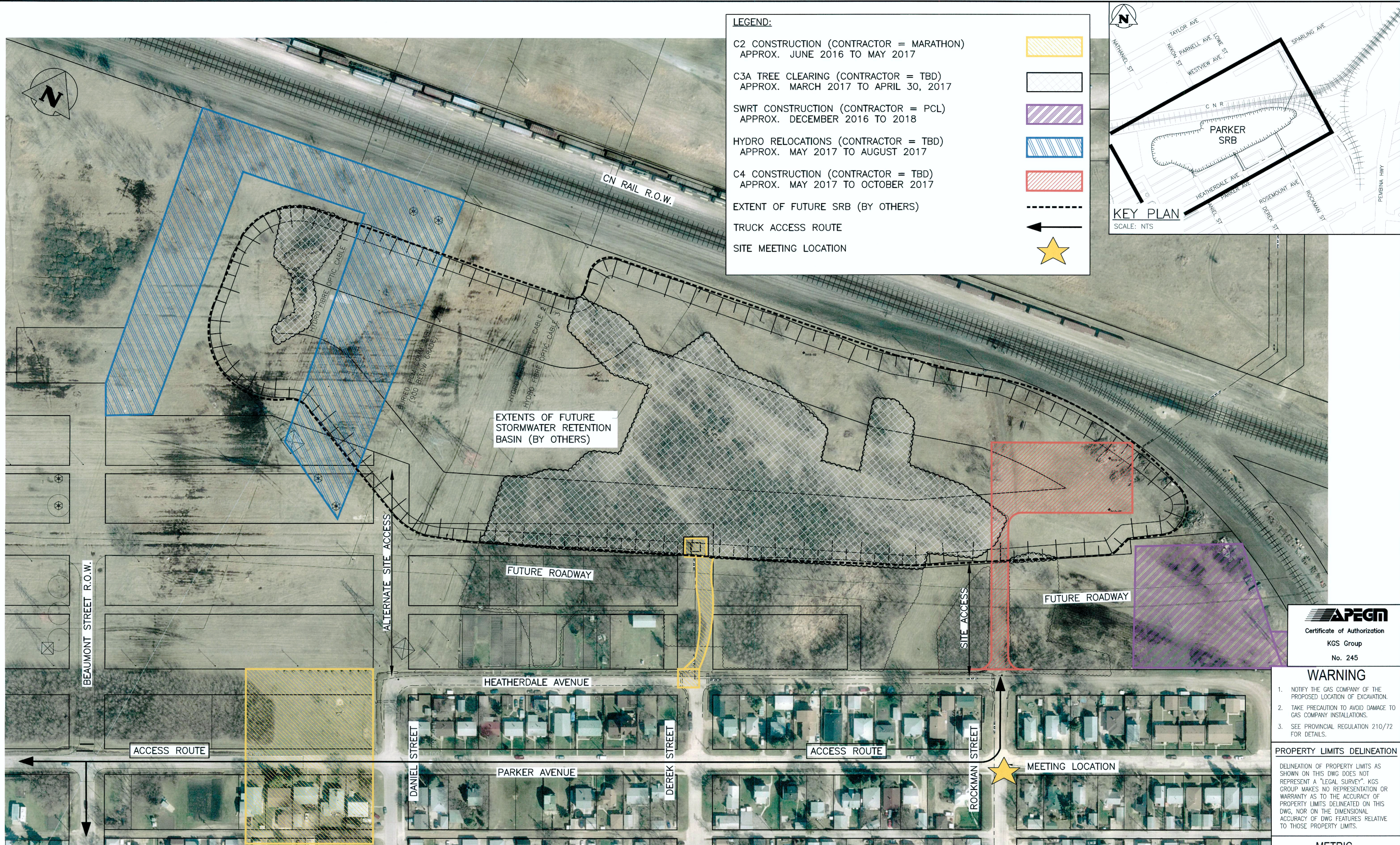


File Name: P:\Projects\2011\11-0107-18\Doc.Control\ToBeIssued\DWG\LD-8047_Rev.0.dwg - Tab: LD-8047 Plotted By: jminkevich 17/01/04 [Wed 10:07am]



LEGEND:

C2 CONSTRUCTION (CONTRACTOR = MARATHON)
APPROX. JUNE 2016 TO MAY 2017

C3A TREE CLEARING (CONTRACTOR = TBD)
APPROX. MARCH 2017 TO APRIL 30, 2017

SWRT CONSTRUCTION (CONTRACTOR = PCL)
APPROX. DECEMBER 2016 TO 2018

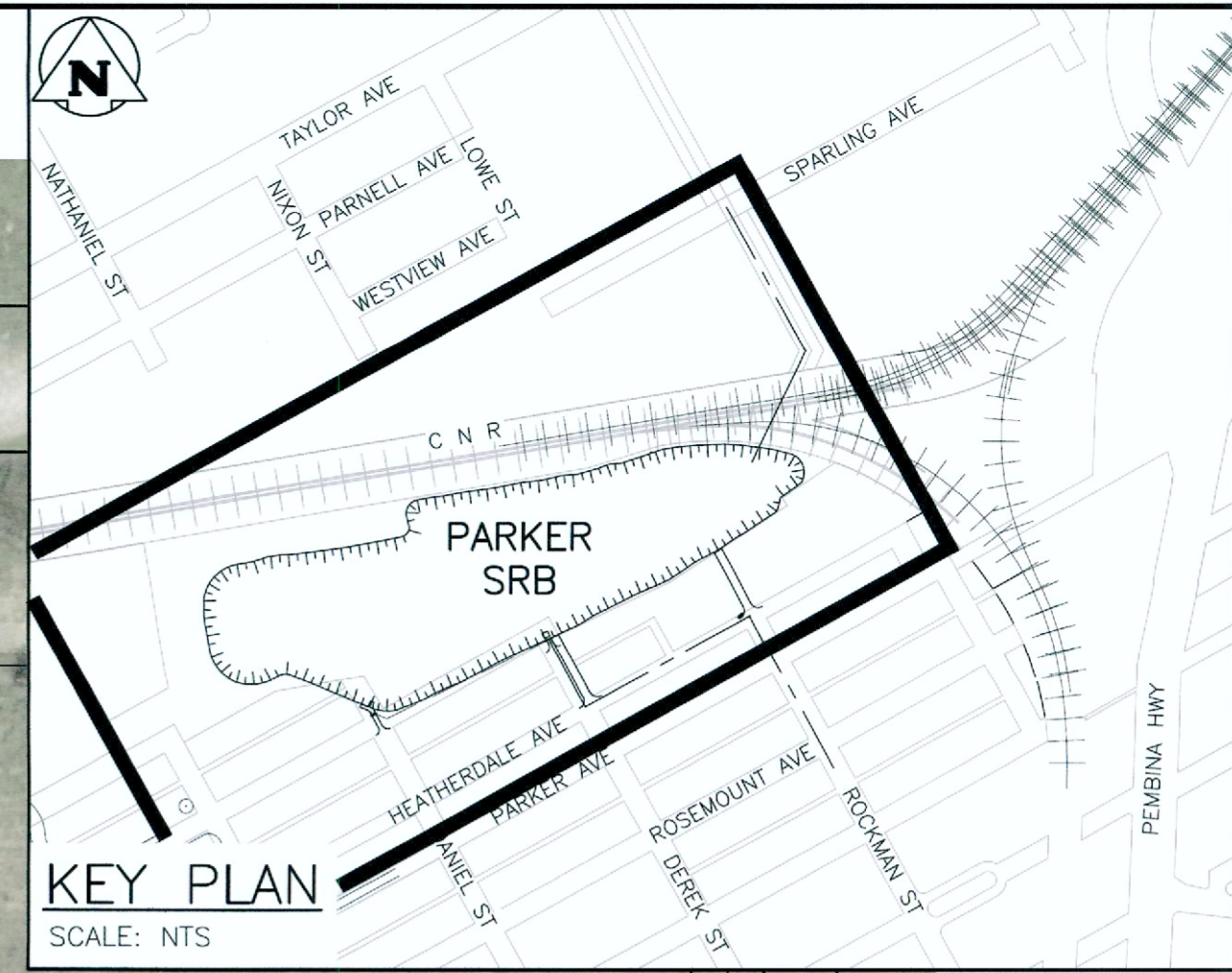
HYDRO RELOCATIONS (CONTRACTOR = TBD)
APPROX. MAY 2017 TO AUGUST 2017

C4 CONSTRUCTION (CONTRACTOR = TBD)
APPROX. MAY 2017 TO OCTOBER 2017

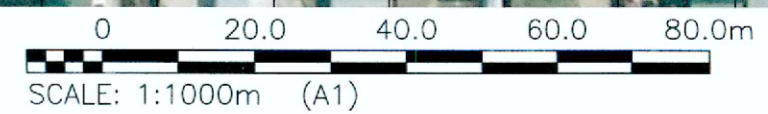
EXTENT OF FUTURE SRB (BY OTHERS)

TRUCK ACCESS ROUTE

SITE MEETING LOCATION



PLAN
SCALE: 1:1000



APEGM
Certificate of Authorization
KGS Group
No. 245

- WARNING**
- NOTIFY THE GAS COMPANY OF THE PROPOSED LOCATION OF EXCAVATION.
 - TAKE PRECAUTION TO AVOID DAMAGE TO GAS COMPANY INSTALLATIONS.
 - SEE PROVINCIAL REGULATION 210/72 FOR DETAILS.

PROPERTY LIMITS DELINEATION

DELINEATION OF PROPERTY LIMITS AS SHOWN ON THIS DWG DOES NOT REPRESENT A "LEGAL SURVEY". KGS GROUP MAKES NO REPRESENTATION OR WARRANTY AS TO THE ACCURACY OF PROPERTY LIMITS DELINEATED ON THIS DWG, NOR ON THE DIMENSIONAL ACCURACY OF DWG FEATURES RELATIVE TO THOSE PROPERTY LIMITS.

METRIC
WHOLE NUMBERS INDICATE MILLIMETRES
DECIMALIZED NUMBERS INDICATE METRES

150 WM	WATER MAIN	150 WM	HYDRANT	150 WM	WATER MAIN	150 WM	LOCATION APPROVED UNDERGROUND STRUCTURES	B.M. ELEV.
300 LDS	LAND DRAINAGE SEWER	300 LDS	VALVE	300 LDS	HYDRANT, VALVE	300 LDS		
250 WWS	WASTE WATER SEWER	250 WWS	MANHOLE	250 WWS	LAND DRAINAGE SEWER	250 WWS		
	HYDRO		CATCH BASIN		WASTE WATER SEWER			
	M.T.S.		CURB INLET		CENTRELINE			
	GAS		RAILWAY TRACKS		NORTH/WEST CUTTER			
	CONCRETE		DITCH		SOUTH/EAST CUTTER			
	ASPHALT		FENCE		N/W, S/E P'S			
	SIDEWALK		HYDRO POLE					
	TURF STONE		HYDRO TOWER					
	PROPERTY LINE		TEST HOLE					
EXISTING	LEGEND-PLAN	PROPOSED	EXISTING	PROPOSED	EXISTING	LEGEND-PROFILE	PROPOSED	

NOTE:
LOCATION OF UNDERGROUND STRUCTURES AS SHOWN ARE BASED ON THE BEST INFORMATION AVAILABLE BUT NO GUARANTEE IS GIVEN THAT ALL EXISTING UTILITIES ARE SHOWN OR THAT THE GIVEN LOCATIONS ARE EXACT. CONFIRMATION OF EXISTENCE AND EXACT LOCATION OF ALL SERVICES MUST BE OBTAINED FROM THE INDIVIDUAL UTILITIES BEFORE PROCEEDING WITH CONSTRUCTION.

DESIGNED BY	JMM	CHECKED BY	RBO
DRAWN BY	GEL	APPROVED BY	
HOR. SCALE:	1:1000	RELEASED FOR CONSTRUCTION:	
VERTICAL:		DATE:	16/06/10
ISSUED FOR CONSTRUCTION	17/01/05	DATE	16/06/10
NO. REVISIONS		DATE	

KGS GROUP CONSULTING ENGINEERS

DESIGNED BY: JMM
DRAWN BY: GEL
CHECKED BY: RBO
APPROVED BY: [Signature]
HOR. SCALE: 1:1000
VERTICAL: -
RELEASED FOR CONSTRUCTION: [Signature]
DATE: 16/06/10

ENGINEER'S SEAL

PROVINCE OF MANITOBA
J.M. MINKEVICH
Member 22769
June 4, 2017
CONSULTANT DRAWING NO.
11-0107-18_V302

THE CITY OF WINNIPEG WATER AND WASTE DEPARTMENT

PROJECT TITLE: COCKBURN/CALROSSIE COMBINED SEWER RELIEF WORKS
STORMWATER RETENTION BASIN TREE REMOVAL - COORDINATION PLAN

SHEET OF: 2 OF 2
COMPUTER FILE NAME: 11-0107-18_V302
CITY DRAWING NUMBER: LD-8047