

APPENDIX C – WATERMAIN RENEWAL LOCATION SKETCHES

Sketches for

Ruby St, Walnut St/Wolseley Ave, Deer Lodge Pl, Wolever Av



CI WM	REPAIR > 15 YRS - ABANDON	FEEDERMAIN	PROJECTS - 2015
PVC WM	REPAIR > 15 YRS	AQUEDUCT	HISTORICAL PROJECTS
AC WM	REPAIR > 15 YRS - ABANDON	MANHOLE	2015 PWD PROJECT - LOCAL
UNKNOWN MATERIAL	VALVES	SEWERS	2015 PWD PROJECT - REGION
REPAIR < 5 YRS	2014 FROZEN SERVICES	RAILWAY	CATHODIC PROTECTION
REPAIR < 5 YRS - ABANDON	HYDRANT	SCHOOL PARCELS	FIRE PROTECTION UPGRADE
REPAIR 5 - 15 YRS	HYDRANT BRANCH		

Additional Notes:



Printed: 11/8/2016

CITY OF WINNIPEG
WATER AND WASTE DEPARTMENT
2017 WATER MAIN RENEWAL PROGRAM

Location ID: 18 Street: RUBY ST

Location Description: WESTMINSTER AVE TO PORTAGE AVE

Scale: 1:2000 Renewal Type: REPAIR COUNT



CI WM	REPAIR 5 - 15 YRS - ABANDON	FEEDER MAIN	PROJECTS - 2015
PVC WM	REPAIR > 15 YRS	AQUEDUCT	HISTORICAL PROJECTS
AC WM	REPAIR > 15 YRS - ABANDON	MANHOLE	2015 PWD PROJECT - LOCAL
UNKNOWN MATERIAL	VALVES	SEWERS	2015 PWD PROJECT - REGION
REPAIR < 5 YRS	2014 FROZEN SERVICES	RAILWAY	CATHODIC PROTECTION
REPAIR < 5 YRS - ABANDON	HYDRANT	SCHOOL PARCELS	FIRE PROTECTION UPGRADE
REPAIR 5 - 15 YRS	HYDRANT BRANCH		

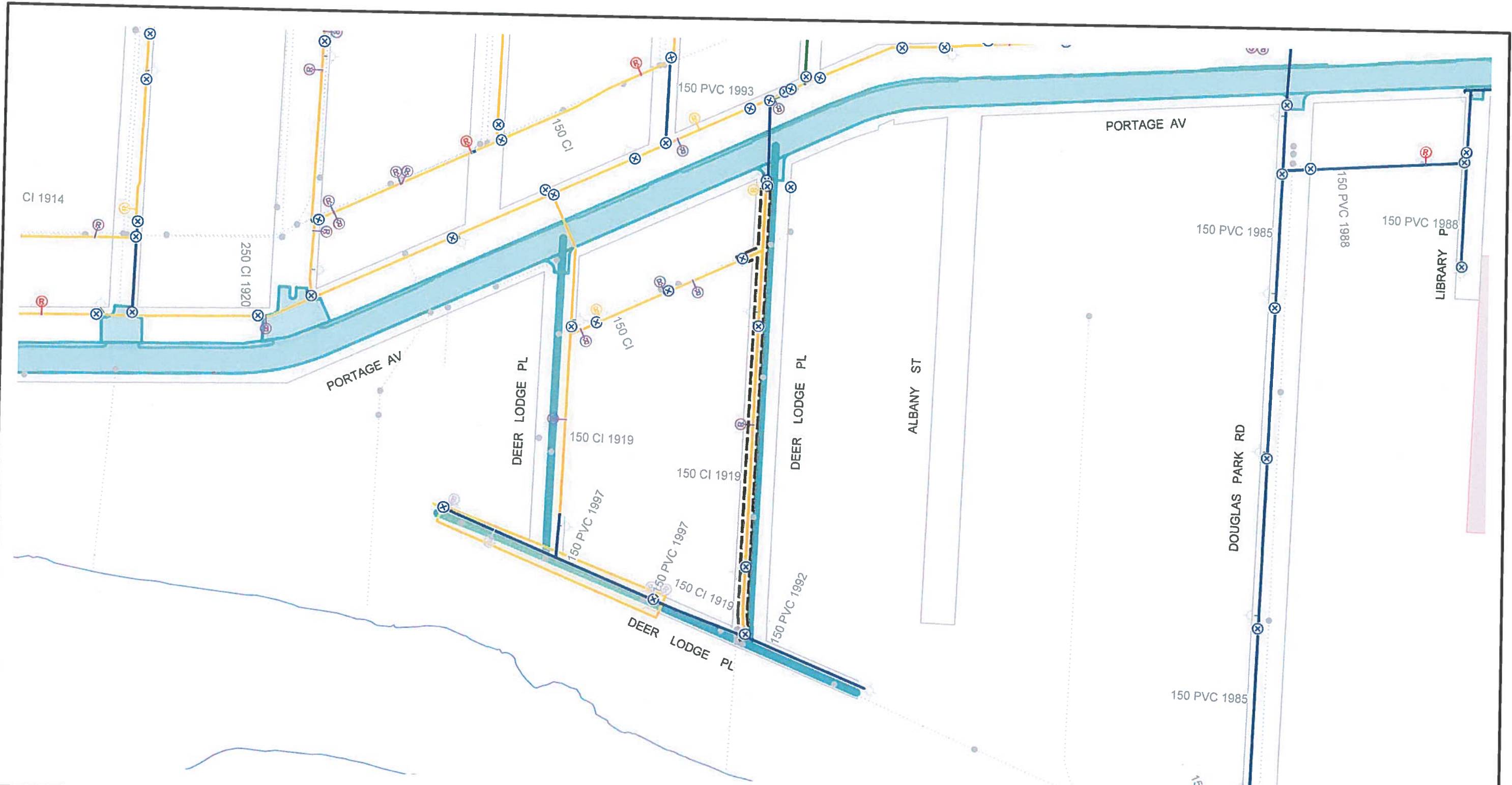
Additional Notes:
 -Proximity to Mulvey Elementary School

Printed: 11/8/2016



**CITY OF WINNIPEG
 WATER AND WASTE DEPARTMENT
 2017 WATER MAIN RENEWAL PROGRAM**

Location ID: 21	Street: WALNUT ST/WOLSELEY AVE
Location Description: DUNDURN PL TO MID-BLOCK E ON WOLSELEY AVE	
Scale: 1:2000	Renewal Type: REPAIR COUNT



CI WM	REPAIR 5 - 15 YRS - ABANDON	FEEDER MAIN	PROJECTS - 2015
PVC WM	REPAIR > 15 YRS	AQUEDUCT	HISTORICAL PROJECTS
AC WM	REPAIR > 15 YRS - ABANDON	MANHOLE	2015 PWD PROJECT - LOCAL
UNKNOWN MATERIAL	VALVES	SEWERS	2015 PWD PROJECT - REGION
REPAIR < 5 YRS	2014 FROZEN SERVICES	RAILWAY	CATHODIC PROTECTION
REPAIR < 5 YRS - ABANDON	HYDRANT	SCHOOL PARCELS	FIRE PROTECTION UPGRADE
REPAIR 5 - 15 YRS	HYDRANT BRANCH		

Additional Notes:



Printed: 11/8/2016

**CITY OF WINNIPEG
WATER AND WASTE DEPARTMENT
2017 WATER MAIN RENEWAL PROGRAM**

Location ID: 34	Street: DEER LODGE PL (E LEG)
Location Description: DEER LODGE PL (S LEG) TO PORTAGE AVE	
Scale: 1:2000	Renewal Type: PWD-LOCAL




CI WM	REPAIR 5 - 15 YRS - ABANDON	FEEDER MAIN	PROJECTS - 2015
PVC WM	REPAIR > 15 YRS	AQUEDUCT	HISTORICAL PROJECTS
AC WM	REPAIR > 15 YRS - ABANDON	MANHOLE	2015 PWD PROJECT - LOCAL
UNKNOWN MATERIAL	VALVES	SEWERS	2015 PWD PROJECT - REGION
REPAIR < 5 YRS	2014 FROZEN SERVICES	RAILWAY	CATHODIC PROTECTION
REPAIR < 5 YRS - ABANDON	HYDRANT	SCHOOL PARCELS	FIRE PROTECTION UPGRADE
REPAIR 5 - 15 YRS	HYDRANT BRANCH		

Additional Notes:
-new water main



Printed: 11/8/2016



CITY OF WINNIPEG WATER AND WASTE DEPARTMENT 2017 WATER MAIN RENEWAL PROGRAM

Location ID: 39	Street: WOLEVER AVE
Location Description: ASHBURN ST TO VALOUR RD	
Scale: 1:2000	Renewal Type: WATER PLANNING-FPU