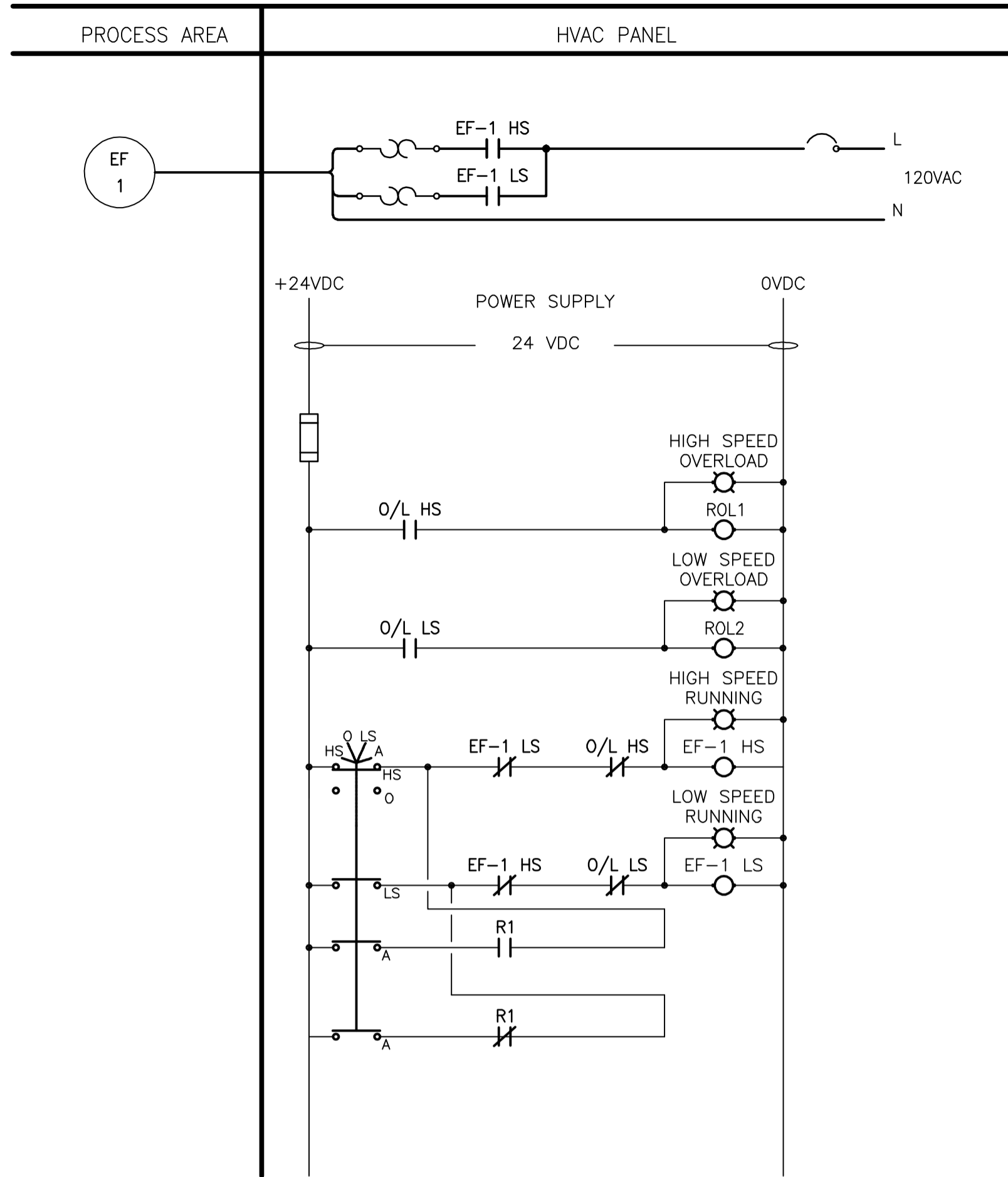
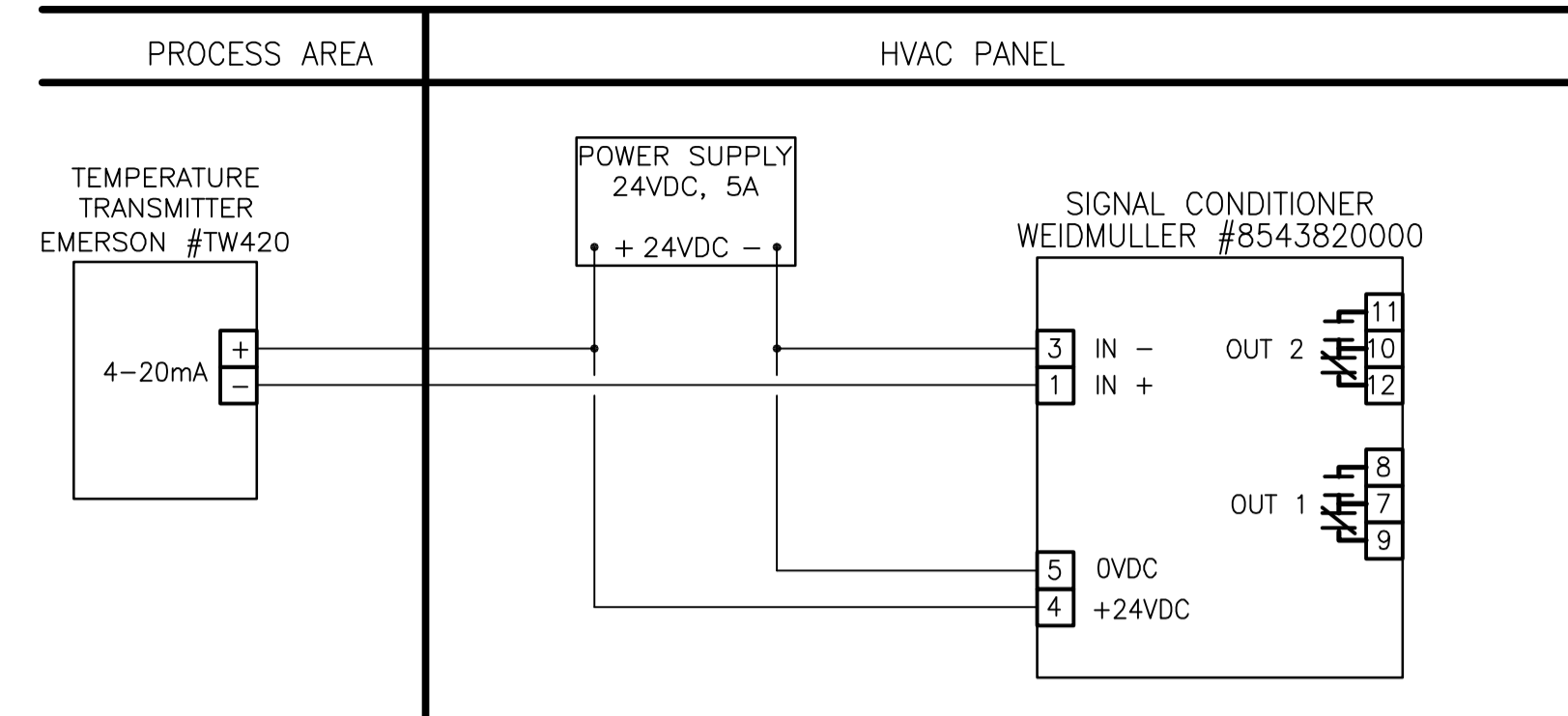


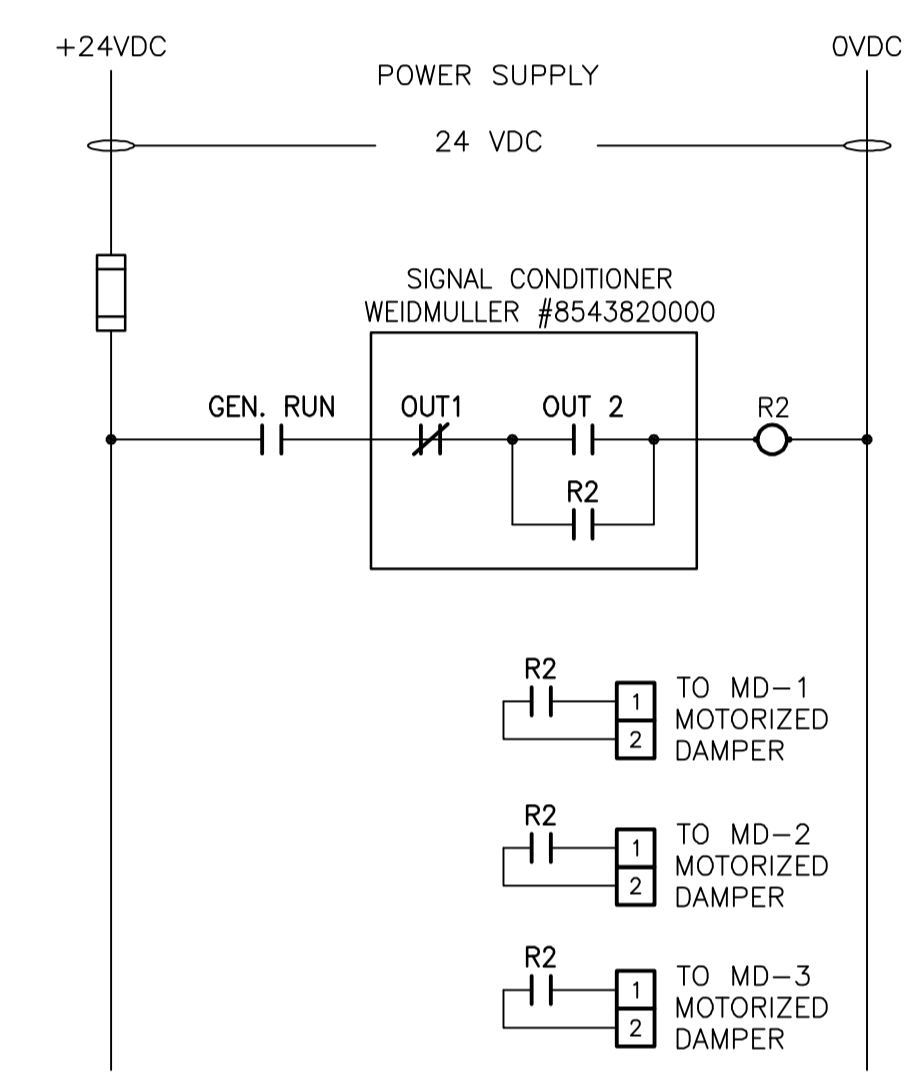
A SUPPLY FAN STARTER LOOP DIAGRAM
TYPICAL FOR: SF-1



D EXHAUST FAN STARTER LOOP DIAGRAM
TYPICAL FOR: EF-1



E TEMPERATURE TRANSMITTER LOOP DIAGRAM
TYPICAL FOR TT-102



C GENSET DAMPERS LOOP DIAGRAM

FANS AND DAMPERS SEQUENCE OF OPERATIONS

SUPERSTRUCTURE SUPPLY FAN SF-1 AND DRY WELL EXHAUST FAN EF-1 TO RUN AT LOW SPEED WHEN SPACE IS UNOCCUPIED AND AT HIGH SPEED WHEN SPACE IS OCCUPIED. ALL FANS TO RUN AT HIGH SPEED WHEN NATURAL GAS HIGH LEVEL IS DETECTED.

SUPERSTRUCTURE SUPPLY FAN MOTORIZED DAMPER MD-4 IS NORMALLY CLOSED (10%) WHEN SPACE IS UNOCCUPIED AND 100% OPEN WHEN SPACE IS OCCUPIED OR NATURAL GAS HIGH LEVEL IS DETECTED.

GENSET INTAKE DAMPER MD-1 (NORMALLY CLOSED), EXHAUST DAMPER MD-2 (NORMALLY CLOSED) AND RETURN DAMPER MD-3 (NORMALLY OPEN) TO BE OPERATED ONLY WHEN GENSET IS RUNNING.

WHEN SUPERSTRUCTURE TEMPERATURE REACHES 21°C (ADJUSTABLE), MOTORIZED DAMPERS MD-1 AND MD-2 TO OPEN AND MOTORIZED DAMPER MD-3 TO CLOSE. SIGNAL CONDITIONER OUTPUT RELAYS TO BE SET AT 21°C (OUT 2) AND 15°C (OUT 1).

PROVIDE 24VAC TRANSFORMERS FOR ALL MOTORIZED DAMPERS.

WARNING

IF POWER EQUIPMENT OR EXPLOSIVES ARE TO BE USED FOR EXCAVATION ON THIS PROJECT THE CONTRACTOR MUST:
1) NOTIFY THE GAS COMPANY OF THE PROPOSED LOCATION OF EXCAVATION.
2) TAKE PRECAUTION TO AVOID DAMAGE TO GAS COMPANY INSTALLATIONS.
SEE PROVINCIAL REGULATION 140/92 FOR DETAILS

METRIC

WHOLE NUMBERS INDICATE MILLIMETRES
DECIMALIZED NUMBERS INDICATE METRES

LOCATION APPROVED UNDERGROUND STRUCTURES		B.M. ELEV.
SUPV. U/G STRUCTURES COMMITTEE	DATE	
NOTE: LOCATION OF UNDERGROUND STRUCTURES AS SHOWN ARE BASED ON THE BEST INFORMATION AVAILABLE BUT NO GUARANTEE IS GIVEN THAT ALL EXISTING UTILITIES ARE SHOWN OR THAT THE GIVEN LOCATIONS ARE EXACT. CONFIRMATION OF EXISTENCE AND EXACT LOCATION OF ALL SERVICES MUST BE OBTAINED FROM THE INDIVIDUAL UTILITIES BEFORE PROCEEDING WITH CONSTRUCTION.		
2	ISSUED FOR TENDER	15.12.23 S.T.
1	ISSUED FOR 95% REVIEW	15.12.04 S.T.
NO.	REVISIONS	YY.MM.DD BY

Stantec
500 - 311 Portage Avenue, Winnipeg M8 Canada R3B 2B9
Tel. 204.489.5900 Fax. 204.453.9012 www.stantec.com

DESIGNED BY	S.T.	CHECKED BY	A.M.
DRAWN BY	Q.L.	APPROVED BY	D.R.
HOR. SCALE: AS. NOTED		RELEASED FOR CONSTRUCTION:	
DATE: 2015.11.05		DATE:	

ENGINEER'S SEAL

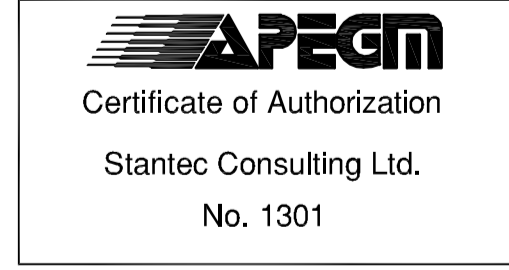
CONSULTANT DRAWING NO.
E-104

THE CITY OF WINNIPEG
PLANNING, PROPERTY & DEVELOPMENT

Winnipeg

ST. BONIFACE INDUSTRIAL PARK PHASE 2
WASTEWATER PUMPING STATION
HVAC ELECTRICAL WIRING DIAGRAM

SHEET	OF
I	I
CAD FILE DRAWING NUMBER 09351e-104-846.DWG	
CITY DRAWING NUMBER I-0215L-E0104-001	



V:\1168\active\116809351\0300_drawing\0302_sheet_files\08_electrical\Phase_2\20160107_251_PN_Sys_Schematic.dwg