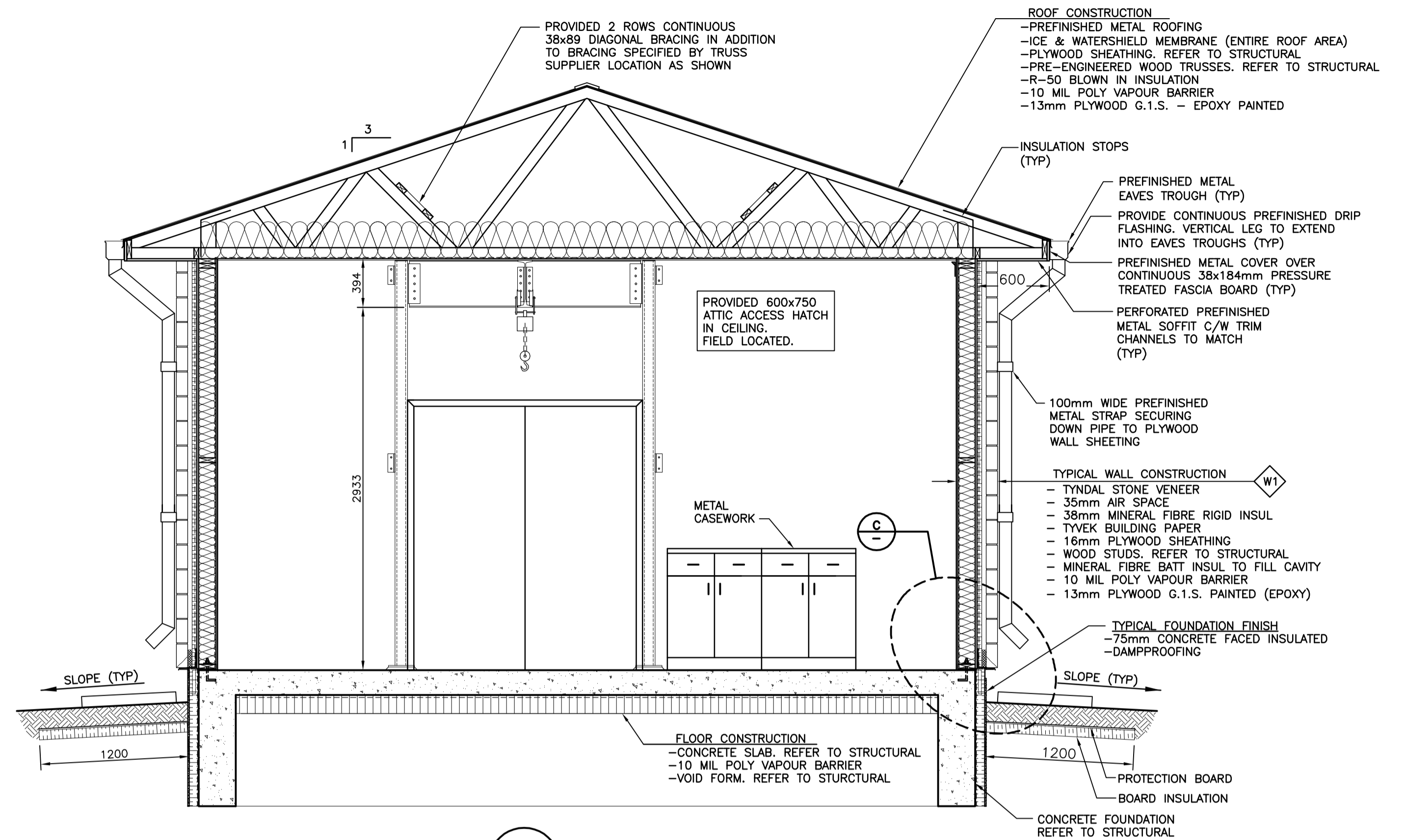
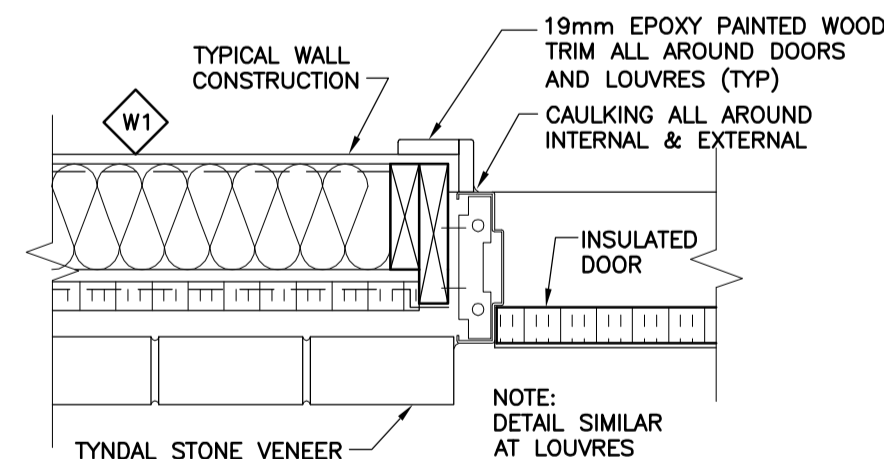


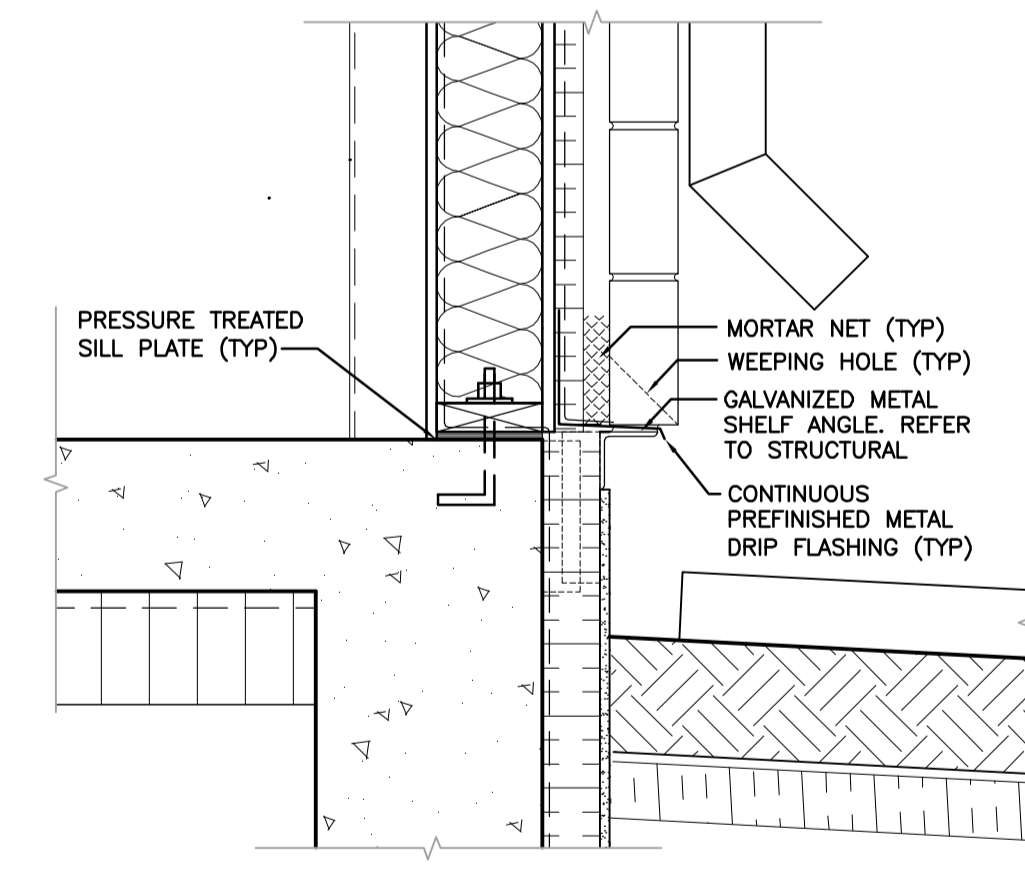
MAIN FLOOR PLAN
1:30



A SECTION
1:30



B SECTION
1:10



C DETAIL
1:10

BUILDING CODE SUMMARY

THE APPLICABLE PRESENTLY GOVERNING CODE FOR THIS BUILDING IS THE 2010 NATIONAL BUILDING CODE OF CANADA AND MANITOBA BUILDING CODE, AND ALL APPLICABLE FEDERAL PROVINCIAL MUNICIPAL BYLAWS AND REGULATIONS.

HEIGHT - ONE STOREY
AREA (EXTERIOR WALL) - 48 sq.m.
CONSTRUCTION - COMBUSTIBLE WALL
- NON COMBUSTIBLE FLOORS

SECTION 3.2.2.76 CLASSIFICATION - F2
MEDIUM-HAZARD INDUSTRIAL OCCUPANCY

SECTION 3.2.2.76 - GROUP F, DIVISION 2, UP TO 2 STOREYS
LIMITATION - BUILDING AREA NOT MORE THAN 1000 sq.m.
FACING 1 STREET COMBUSTIBLE OR NON-COMBUSTIBLE CONSTRUCTION.

i- FLOOR ASSEMBLIES SHALL BE FIRE SEPARATION AND, IF OF COMBUSTIBLE CONSTRUCTION, SHALL HAVE A FIRE-RESISTANCE RATING NOT LESS THAN 45 MIN, AND ii- LOADBEARING WALLS, COLUMNS AND ARCHES SUPPORTING AN ASSEMBLY REQUIRED TO HAVE A FIRE-RESISTANCE RATING SHALL:
1- HAVE A FIRE-RESISTANCE RATING NOT LES THAN 45 MIN, OR
2- BE OF NONCOMBUSTIBLE CONSTRUCTION.

SECTION 3.4.2.3 - DISTANCE BETWEEN EXITS OF THE FLOOR AREA SHALL BE ONE HALF THE MAX. DIAGONAL DIMENSION OF THE FLOOR AREA, BUT NOT MORE THAN 9M.

SECTION 3.4.2.5 - TRAVEL DISTANCE TO AT LEAST ONE EXIT SHALL BE NOT MORE THAN 45m, PROVIDED IT IS SPRINKLERED THROUGHOUT OR 30m IF IT'S NOT SPRINKLERED THROUGHOUT.

D1 DOOR DESCRIPTION

DOUBLE DOOR 900x2150 INSULATED HOLLOW METAL DOOR AND THERMALLY BROKEN FRAME. DOOR AND FRAME PAINT COLOR TO BE CHARCOAL TO MATCH PREFINISHED METAL COLOR 56072 - CHARCOAL

HARDWARE

6 EA HINGE	3CB1 4.5 X 4 NRP 630
2 EA MANUAL FLUSH BOLT	FB458 626 IVE
1 EA STOREROOM LOCK	D80PD ORB 626 SCH
1 EA ASTRAGAL	W-8P 627 KNC
2 EA SURFACE CLOSER	4111 EDA 689 LCN
2 EA OVERHEAD STOP	100S 630 GLY
2 EA KICKPLATE	8400 10" 630 IVE
2 SET WEATHERSTRIP	W-13 628 KNC
2 EA DOOR SWEEP	W-13S 628 KNC
1 EA THRESHOLD	CT-10 627 KNC
1 EA DEADBOLT	B560BD 626 SCH

METRIC
WHOLE NUMBERS INDICATE MILLIMETRES
DECIMALIZED NUMBERS INDICATE METRES



LOCATION APPROVED UNDERGROUND STRUCTURES	
SUPV. U/G STRUCTURES COMMITTEE	DATE
NOTE: LOCATION OF UNDERGROUND STRUCTURES AS SHOWN ARE BASED ON THE BEST INFORMATION AVAILABLE BUT NO GUARANTEE IS GIVEN THAT ALL EXISTING UTILITIES ARE SHOWN OR THAT THE GIVEN LOCATIONS ARE EXACT. CONFIRMATION OF EXISTENCE AND EXACT LOCATION OF ALL SERVICES MUST BE OBTAINED FROM THE INDIVIDUAL UTILITIES BEFORE PROCEEDING WITH CONSTRUCTION.	
NO.	REVISIONS
2	ISSUED FOR TENDER 15.12.23 M.H.
1	ISSUED FOR 95% REVIEW 15.12.04 M.H.
YY.MM.DD.	BY

B.M. ELEV.	
DESIGNED BY	W.D.L.
CHECKED BY	S.N.
DRAWN BY	P.D.
APPROVED BY	B.F.
HOR. SCALE:	AS. NOTED
VERTICAL:	
DATE	2015.11.05
RELEASER FOR CONSTRUCTION:	

Stantec
500 - 311 Portage Avenue, Winnipeg M8 Canada R3B 2B9
Tel. 204.489.5900 Fax. 204.453.9012 www.stantec.com

ENGINEER'S SEAL
CONSULTANT DRAWING NO. **B-101**

THE CITY OF WINNIPEG
PLANNING, PROPERTY & DEVELOPMENT

ST. BONIFACE INDUSTRIAL PARK PHASE 2
WASTEWATER PUMPING STATION
MAIN FLOOR PLAN, SECTIONS & DETAILS

SHEET **I** OF **I**
CAD FILE DRAWING NUMBER **09351A-101-846.DWG**
CITY DRAWING NUMBER **I-0216L-B0101-001**

V:\1168\active\116809351\0300_drawing\0300_sheet_files\04_architectural\phase_2\09351a-101-846.dwg 2015/07/07 3:48 PM By: Remorse, ksh