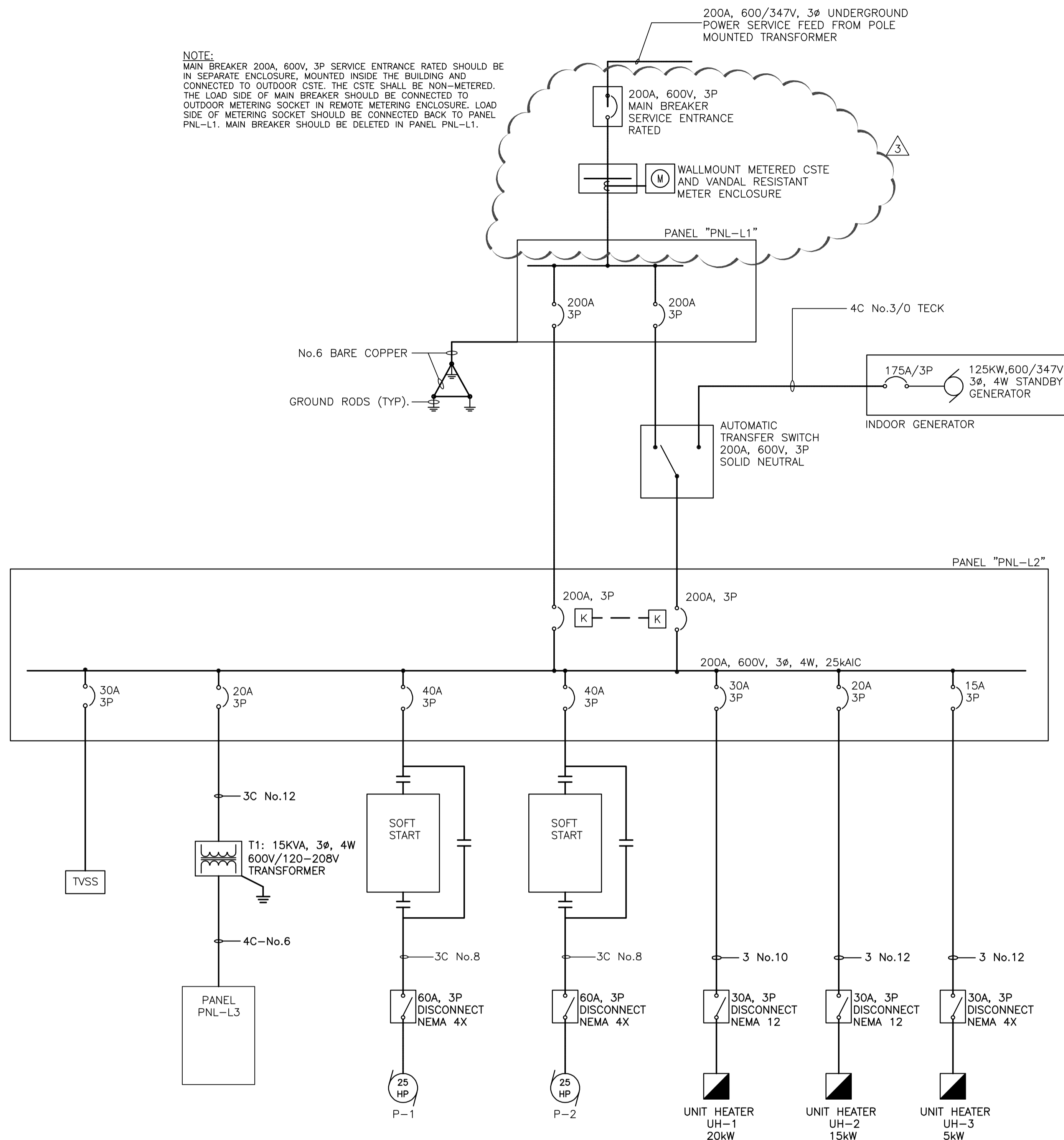


NOTE:  
 MAIN BREAKER 200A, 600V, 3P SERVICE ENTRANCE RATED SHOULD BE IN SEPARATE ENCLOSURE, MOUNTED INSIDE THE BUILDING AND CONNECTED TO OUTDOOR CSTE. THE CSTE SHALL BE NON-METERED. THE LOAD SIDE OF MAIN BREAKER SHOULD BE CONNECTED TO OUTDOOR METERING SOCKET IN REMOTE METERING ENCLOSURE. LOAD SIDE OF METERING SOCKET SHOULD BE CONNECTED BACK TO PANEL PNL-L1. MAIN BREAKER SHOULD BE DELETED IN PANEL PNL-L1.



1 ELECTRICAL SINGLE LINE DIAGRAM  
 N.T.S.

PANEL "PNL-L1"		347/600V, 3Ø, 4W				225A MAINS		
DESCRIPTION	CCT.	BRK AMP	A	B	C	BRK AMP	CCT.	DESCRIPTION
MAIN BREAKER "NORMAL"	7	200	+	+	+	200	8	MAIN BREAKER "STANDBY"
SPACE	9	200					10	SPACE
	11						12	
	1						2	
	3						4	
	5						6	

A PANEL "PNL-L1" SCHEDULE  
 N.T.S.

PANEL "PNL-L2"		347/600V, 3Ø, 4W				225A MAINS		
DESCRIPTION	CCT.	BRK AMP	A	B	C	BRK AMP	CCT.	DESCRIPTION
MAIN BREAKER "NORMAL" (KIRK KEY)	1	200	+	+	+	200	2	MAIN BREAKER "STANDBY" (KIRK KEY)
PUMP P-1	3	40	+	+	+	40	4	PUMP P-2
	5						6	
	7						8	
	9						10	
	11						12	
	13						14	
TRANSFORMER T-1 15kVA, 600/120-208V, 3P	15	20	+	+	+	30	16	UNIT HEATER UH-1
	17						18	
	19						20	
UNIT HEATER UH-2	21	20	+	+	+	15	22	UNIT HEATER UH-3
	23						24	
	25						26	
TVSS	27	30	+	+	+		28	SPACE
	29						30	
	31						32	
SPACE	33						34	SPACE
	35						36	

B PANEL "PNL-L2" SCHEDULE  
 N.T.S.

PANEL "PNL-L3"		120/208V, 3Ø, 4W				100A MAINS		
DESCRIPTION	CCT.	BRK AMP	A	B	C	BRK AMP	CCT.	DESCRIPTION
SUPERSTRUCTURE LIGHTING, EMERGENCY, EXIT	1	15	+	+	+	15	2	SUPERSTRUCTURE RECEPTACLES (5)
SPARE	3	15				15	4	CONTROL PANEL
SPARE	5	15				15	6	HVAC PANEL
EXTERIOR LIGHTING	7	15	+	+	+	20	8	SUMP PUMP SP-1
DRY WELL EXHAUST FAN EF-1	9	15	+	+	+	15	10	SUPERSTRUCTURE SUPPLY FAN SF-1
HOIST	11	20	+	+	+	20	12	SPARE
	13					20	14	SPARE
	15	40	+	+	+	20	16	SPARE
	17					30	18	SPARE
	19	15	+	+	+	15	20	SPARE
	21	15	+	+	+	15	22	SPARE
	23	15	+	+	+	15	24	SPARE
	25	15	+	+	+	15	26	SPARE
	27	15	+	+	+	15	28	SPARE
	29	15	+	+	+	15	30	SPARE

C PANEL "PNL-L3" SCHEDULE  
 N.T.S.

V:\1168\active\116809351\0300\_drawing\0302\_sheet\_files\08\_electrical\Phase\_2\20160106\_202\DWG\08\_electrical\Phase\_2\09351e-103-846.dwg F:103

**METRIC**  
 WHOLE NUMBERS INDICATE MILLIMETRES  
 DECIMALIZED NUMBERS INDICATE METRES

LOCATION APPROVED UNDERGROUND STRUCTURES

SUPV. U/G STRUCTURES COMMITTEE DATE

NOTE:  
 LOCATION OF UNDERGROUND STRUCTURES AS SHOWN ARE BASED ON THE BEST INFORMATION AVAILABLE BUT NO GUARANTEE IS GIVEN THAT ALL EXISTING UTILITIES ARE SHOWN OR THAT THE GIVEN LOCATIONS ARE EXACT. CONFIRMATION OF EXISTENCE AND EXACT LOCATION OF ALL SERVICES MUST BE OBTAINED FROM THE INDIVIDUAL UTILITIES BEFORE PROCEEDING WITH CONSTRUCTION.

B.M. ELEV.	NO.	REVISIONS	DATE	BY
	3	ISSUED FOR ADDENDUM #3	16.01.26	S.T.
	2	ISSUED FOR TENDER	15.12.23	S.T.
	1	ISSUED FOR 95% REVIEW	15.12.04	S.T.
			YY.MM.DD.	BY

**Stantec**  
 500 - 311 Portage Avenue, Winnipeg M8 Canada R3B 2B9  
 Tel. 204.489.5900 Fax. 204.453.9012 www.stantec.com

DESIGNED BY: S.T. CHECKED BY: A.M.  
 DRAWN BY: Q.L. APPROVED BY: D.R.

HOR. SCALE: AS. NOTED VERTICAL: RELEASED FOR CONSTRUCTION: DATE: 2015.11.05

ENGINEER'S SEAL

CONSULTANT DRAWING NO. E-103

**THE CITY OF WINNIPEG**  
 PLANNING, PROPERTY & DEVELOPMENT

Winnipeg

ST. BONIFACE INDUSTRIAL PARK PHASE 2  
**WASTEWATER PUMPING STATION**  
 ELECTRICAL SINGLE LINE DIAGRAM  
 AND PANEL SCHEDULES

SHEET I OF I  
 CAD FILE DRAWING NUMBER 09351e-102-846.DWG  
 CITY DRAWING NUMBER I-0216L-E0103-001

