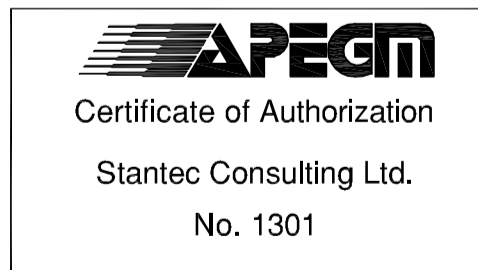


MH#	RIM ELEV.	INVERT
MH1	230.941	300E=229.165
MH2	230.685	300W=228.849 200S=229.200
MH3	230.929	300E=225.021 300S=225.010 300W=225.048
MH4	230.636	300E=228.886
MH5	230.424	300S=228.968
MH6	230.929	300W=223.558 300N=223.598 300S=223.568 300E=228.289
MH7	230.763	300N=228.967
MH8	230.556	300N=228.583 300S=228.600
MH9	230.796	EX 375S=228.605
MH10	230.267	375W&N=228.537
MH11	231.116	EX 375S=ABANDONED EX 300E=228.329 EX 450N=227.739 EX W=227.729 375S=228.198
MH12	RIM=230.669	EX 300S=226.080 300S=222.961
MH13	230.779	375W=226.812 300N=226.652
MH13A	230.723	375W=226.664 375E=226.584 300S=226.534 300N=226.514

- NOTES:**
- LOCATIONS OF UNDERGROUND UTILITIES SHOULD BE ASSUMED TO BE APPROXIMATE. CONTRACTOR TO VERIFY EXACT LOCATIONS AND ELEVATIONS IN THE FIELD.
  - THIS DRAWING IS FOR INFORMATION PURPOSES ONLY.
  - CONTRACTOR TO NOTE AND PROTECT LOCATION OF BENCHMARK #2 SHOWN ON DRAWING. IF BENCHMARK IS DISTURBED BY CONSTRUCTION ACTIVITIES, IT SHALL BE REPLACED AT THE CONTRACTOR'S EXPENSE.



W. side Main St. on the grounds of the North End Treatment Plant. U.T.M. coordinates are N: 5534816.615, E: 635804.484

**WARNING**  
IF POWER EQUIPMENT OR EXPLOSIVES ARE TO BE USED FOR EXCAVATION ON THIS PROJECT THE CONTRACTOR MUST:  
1) NOTIFY THE GAS COMPANY OF THE PROPOSED LOCATION OF EXCAVATION.  
2) TAKE PRECAUTION TO AVOID DAMAGE TO GAS COMPANY INSTALLATIONS.  
SEE PROVINCIAL REGULATION 140/92 FOR DETAILS

**METRIC**  
WHOLE NUMBERS INDICATE MILLIMETRES  
DECIMALIZED NUMBERS INDICATE METRES

EXISTING	LEGEND-PLAN	PROPOSED	EXISTING	LEGEND-PLAN	PROPOSED
150 WM	WATERMAIN	150 WM	M.T.S.	M.T.S.	
Hydrant symbol	HYDRANT	Hydrant symbol	CONCRETE	CONCRETE	
Valve symbol	VALVE	Valve symbol	ASPHALT	ASPHALT	
300 LDS	LAND DRAINAGE SEWER	300 LDS	SIDEWALK	SIDEWALK	
250 WWS	WASTE WATER SEWER	250 WWS	PROPERTY LINE	PROPERTY LINE	
Vent symbol	VENT PIPING	Vent symbol	SURVEY BAR	SURVEY BAR	
Manhole symbol	MANHOLE	Manhole symbol	DITCH	DITCH	
Catch basin symbol	CATCH BASIN	Catch basin symbol	ELEVATION	ELEVATION (32.23)	
Gas symbol	GAS	Gas symbol	MECHANICAL PIPE COUPLING	MECHANICAL PIPE COUPLING	
Hydro symbol	HYDRO	Hydro symbol	PIPE PLUG	PIPE PLUG	
Reducer symbol	REDUCER	Reducer symbol	BOLLARD	BOLLARD	
Existing symbol	LEGEND-PLAN	Proposed symbol	Proposed symbol	LEGEND-PLAN	PROPOSED

**LOCATION APPROVED UNDERGROUND STRUCTURES**

SUPV. U/G STRUCTURES COMMITTEE DATE

**NOTE:**  
LOCATION OF UNDERGROUND STRUCTURES AS SHOWN ARE BASED ON THE BEST INFORMATION AVAILABLE BUT NO GUARANTEE IS GIVEN THAT ALL EXISTING UTILITIES ARE SHOWN OR THAT THE GIVEN LOCATIONS ARE EXACT. CONFIRMATION OF EXISTENCE AND EXACT LOCATION OF ALL SERVICES MUST BE OBTAINED FROM THE INDIVIDUAL UTILITIES BEFORE PROCEEDING WITH CONSTRUCTION.

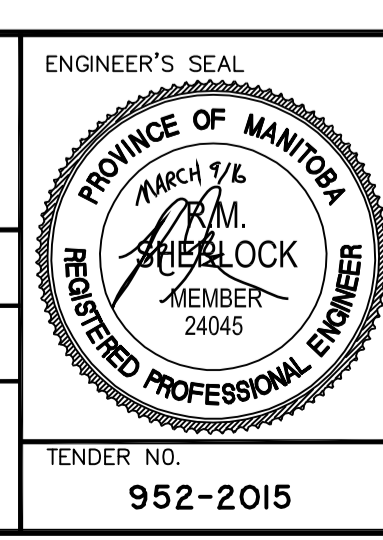
NO.	REVISIONS	DATE	BY
3	ISSUED FOR TENDER	16.03.09	R.M.S.
2	ISSUED FOR TENDER REVIEW	16.03.07	R.M.S.
1	ISSUED FOR 95% REVIEW	16.01.29	S.K.B.

**Stantec**  
500-311 Portage Ave, Winnipeg MB Canada  
www.stantec.com

DESIGNED BY: J.K.H. CHECKED BY: S.K.B.  
DRAWN BY: J.K.H. APPROVED BY: R.M.S.

HOR. SCALE: 1:200  
VERTICAL: RELEASED FOR CONSTRUCTION: DATE

DATE: 2016.01.12



**THE CITY OF WINNIPEG**  
WATER AND WASTE DEPARTMENT

**Winnipeg**

**NORTH END SEWAGE TREATMENT PLANT (NEWPCC)**  
HAULED LIQUID WASTE FACILITY PHASE II UPGRADE

EXISTING UNDERGROUND PIPING  
SITE PLAN

TENDER NO. 952-2015  
CITY DRAWING NUMBER I-OIOIA-C0001-001  
SHEET 1 OF 4