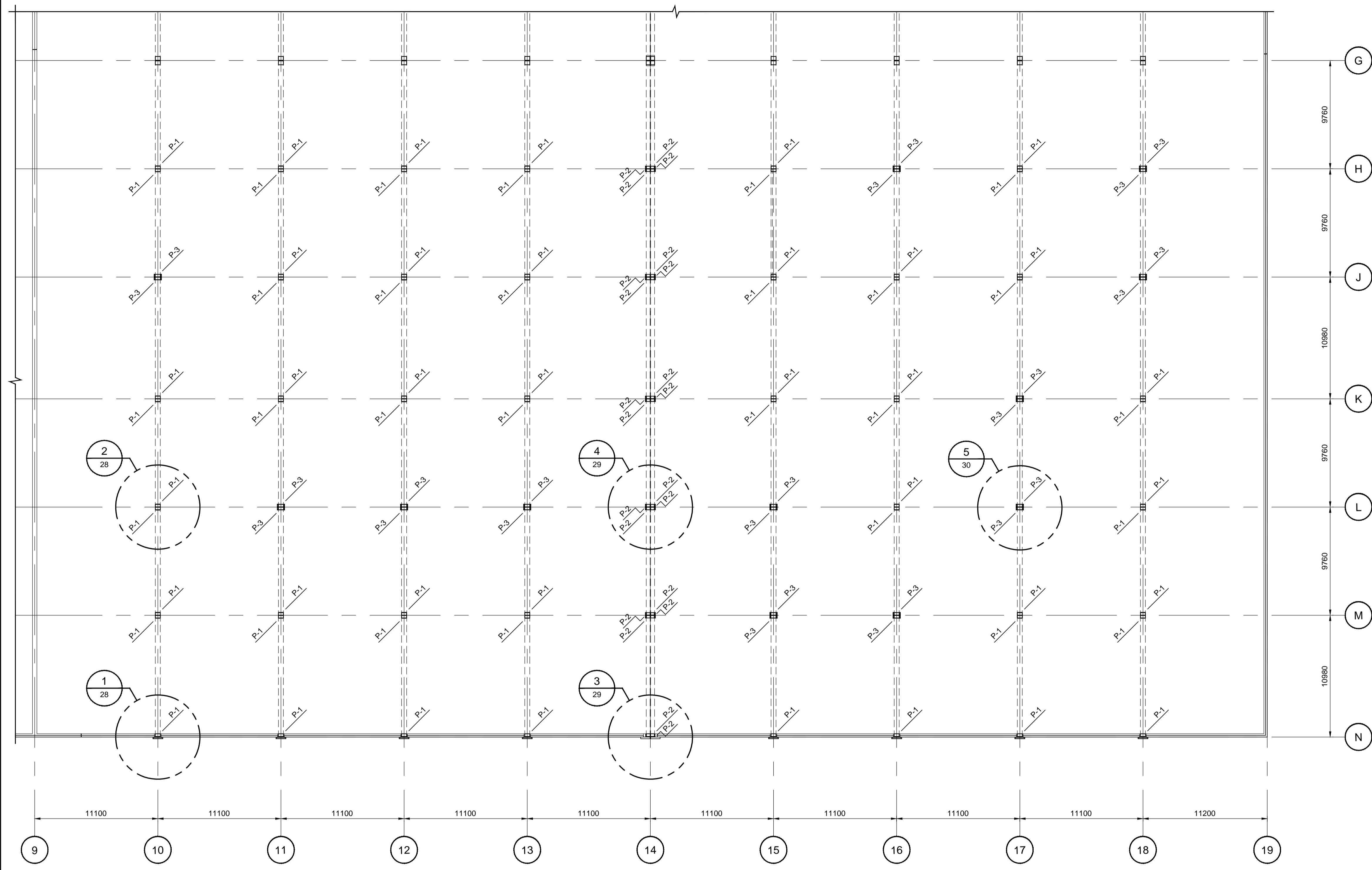


**BILL OF BEARING PLATES**  
FOR STAGE 2, AREA D (EXCLUDING LINE G)

MARK	No.	DESCRIPTION	LOCATIONS
P-1	64	BEARING PLATE - AS DETAILED	ALONG EXTERIOR WALL ON GRID LINE N AND INTERIOR COLUMNS
P-2	22	BEARING PLATE - AS DETAILED	ALONG GRID LINE 14
P-3	24	BEARING PLATE - AS DETAILED	INTERIOR COLUMNS
P-4	0	BEARING PLATE - AS DETAILED	ALONG GRID LINE G
P-5	0	BEARING PLATE - AS DETAILED	GRID LINE G14



**BEARING PLATE PLACEMENT PLAN, AREA "D"**  
1:200

**METRIC**

WHOLE NUMBERS INDICATE MILLIMETRES  
DECIMALIZED NUMBERS INDICATE METRES

Certificate of Authorization  
Dillon Consulting Limited (MB)  
No. 1789 Date: 2015-11-20

LOCATION APPROVED  
UNDERGROUND STRUCTURES  
N/A

SUPV. U/G STRUCTURES COMMITTEE \_\_\_\_\_ DATE \_\_\_\_\_

NOTE:  
LOCATION OF UNDERGROUND STRUCTURES AS SHOWN ARE BASED ON THE BEST INFORMATION AVAILABLE BUT NO GUARANTEE IS GIVEN THAT ALL EXISTING UTILITIES ARE SHOWN OR THAT THE GIVEN LOCATIONS ARE EXACT. CONFIRMATION OF EXISTENCE AND EXACT LOCATION OF ALL SERVICES MUST BE OBTAINED FROM THE INDIVIDUAL UTILITIES BEFORE PROCEEDING WITH CONSTRUCTION.

B.M. ELEV.	
CONSTRUCTION COMPLETION DATE:	
ISSUED FOR TENDER	2015 11 20
NO.	REVISIONS

CHECKED BY	DRA
APPROVED BY	SSR
DESIGNED BY	FAK
DRAWN BY	TLK
SCALE:	AS NOTED
HORIZONTAL	
VERTICAL	
DATE	2015 11 20

RELEASED FOR CONSTRUCTION

ENGINEER'S SEAL

CONSULTANT DRAWING NUMBER  
**14-1411-S-119**

**THE CITY OF WINNIPEG**  
WATER AND WASTE DEPARTMENT  
ENGINEERING DIVISION

WILKES RESERVOIR NORTH CELL REHABILITATION  
STAGE 2 EAST CELL  
BEARING PLATE PLACEMENT PLAN  
AREA "D"

SHEET 27 OF 47 CITY DRAWING NUMBER  
**1-0650R-S0017-001**