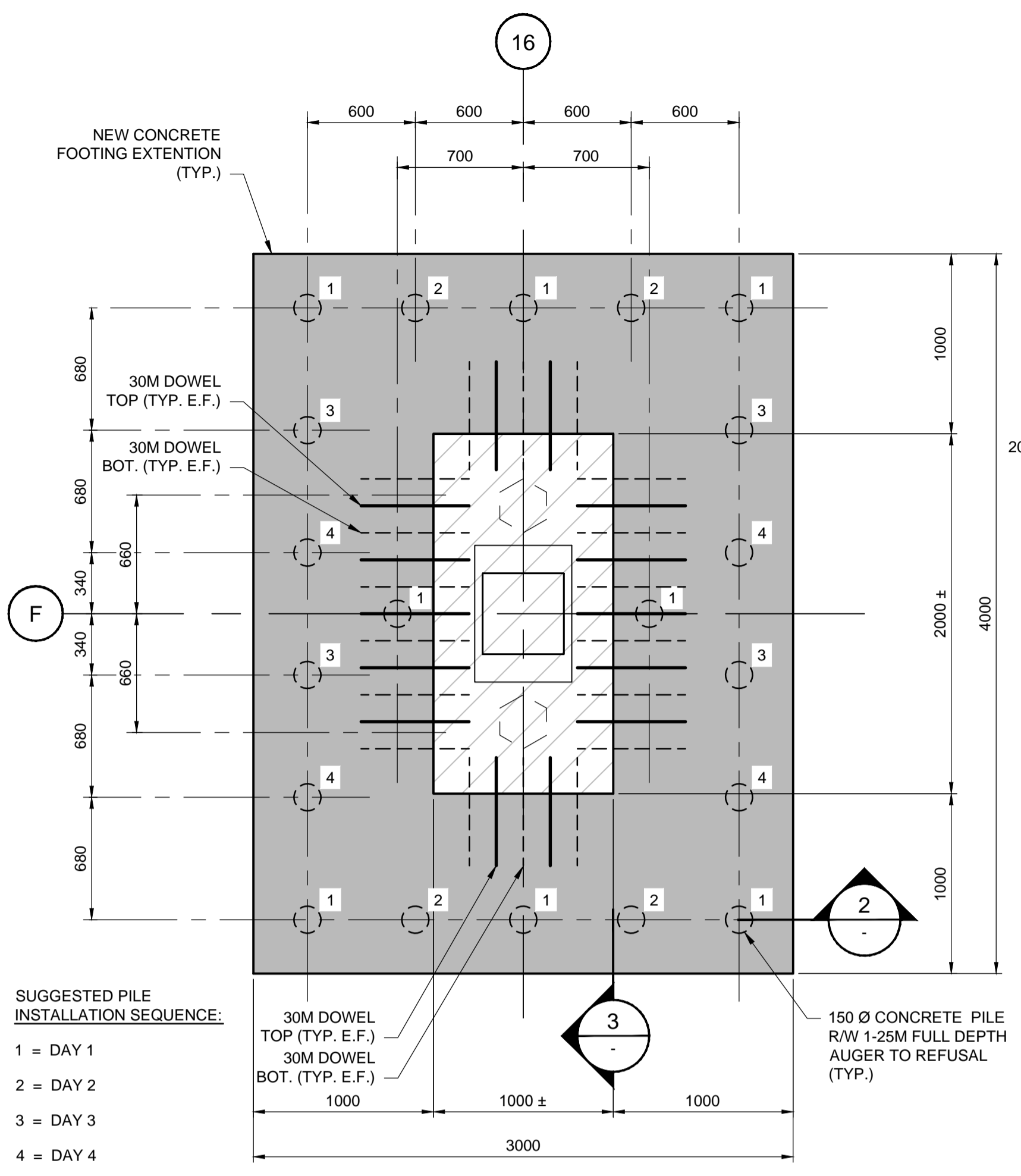


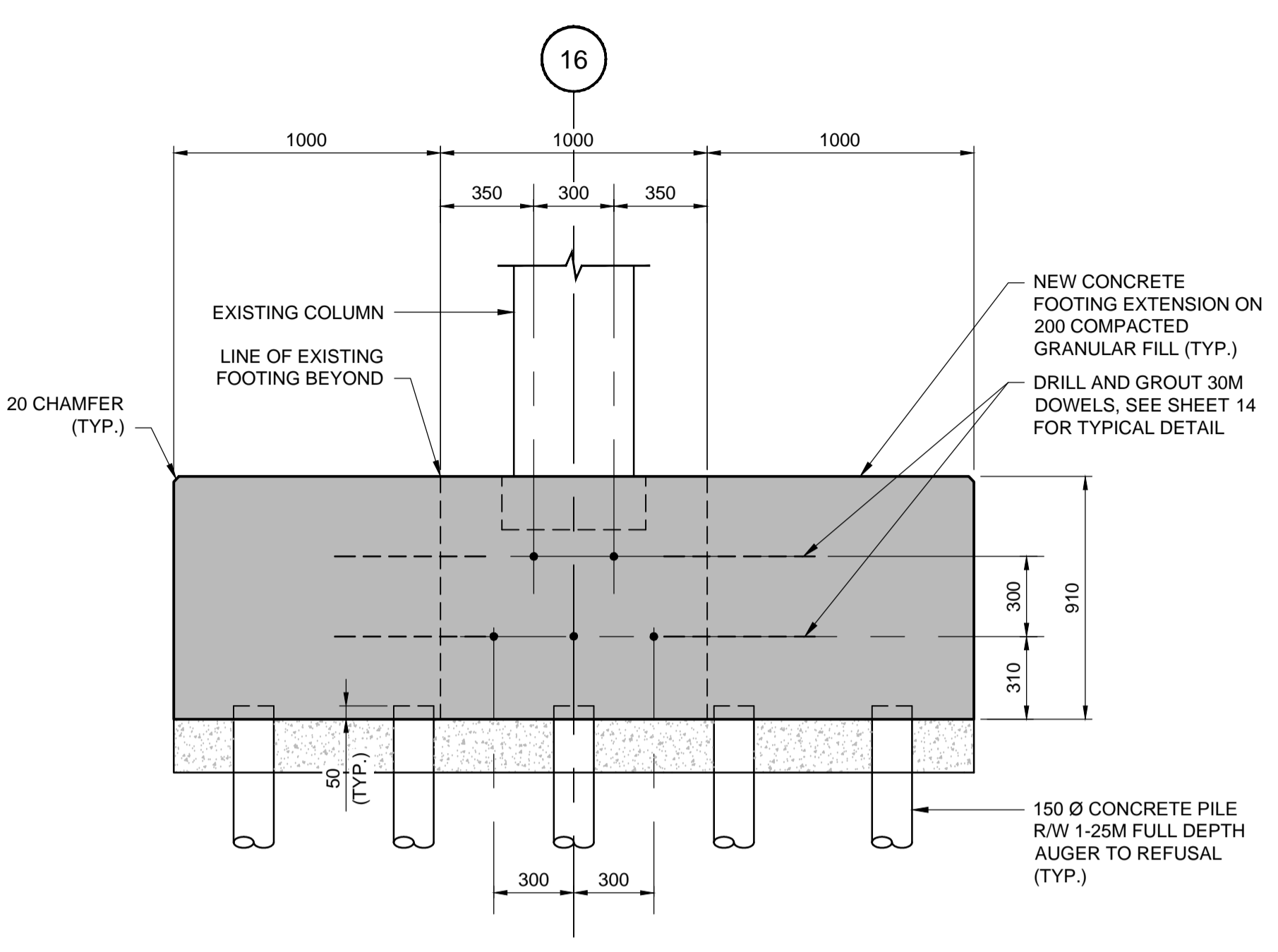
FOUNDATION STABILIZATION - CONSTRUCTION PROCEDURE NOTES:

1. SAW CUT AND REMOVE FLOOR SLAB FOR INSTALLATION OF NEW EXPANDED FOOTING.
2. INSTALL MINI PILES AS SHOWN ON THE DRAWINGS AND IN THE SUGGESTED SEQUENCE TO ENSURE NO TWO ADJACENT MINI PILES ARE INSTALLED IN THE SAME WORK DAY OR UNTIL THE CONCRETE IN ANY ADJACENT MINI PILE HAS ACHIEVED INITIAL SET (MINIMUM 24 HOURS). MINI PILES TO BE EXTENDED TO AUGER REFUSAL (6000 - 6500 BELOW BOTTOM OF EXISTING PILE CAP).
3. EXCAVATE FOR FOUNDATION ENLARGEMENT TO 200 mm BELOW EXISTING PILE CAP BASE, REMOVE VOID FORM AND REPLACE WITH 200 mm OF WELL COMPACTED LIMESTONE (50 mm DOWN) UNDER THE PILE CAP AND OVER THE ENTIRE EXPANDED FOUNDATION FOOTPRINT.
4. INSTALL CEMENTITIOUS GROUT ADHESIVE SHEAR DOWELS AS SHOWN ON THE DRAWINGS. ALL 40 mm HOLES TO BE CORED. AFTER THE CEMENTITIOUS GROUT HAS SET UP, SANDBLAST THE SIDES OF THE EXISTING PILE CAP AND EXPOSE FINE AGGREGATE. CARE TO BE TAKEN TO NOT DAMAGE THE DOWELS.
5. FORM NEW FOOTING, INSTALL REINFORCING AND PLACE CONCRETE IN ACCORDANCE WITH THE DRAWINGS AND CONTRACT SPECIFICATIONS.
6. AFTER CONCRETE HAS REACHED 25 MPa, AS SPECIFIED IN THE CONTRACT SPECIFICATIONS, REMOVE FORMWORK AND BACKFILL WITH COMPACTED LIMESTONE (25 mm DOWN).
7. AFTER THE CONCRETE HAS CURED FOR A MINIMUM OF SEVEN (7) DAYS, INSTALL BEARING PAD, NEW BEARING PLATE, AND SHIMS. REFER TO SHEET 13 FOR COLUMN SUPPORT BLOCKING DETAILS AND CONSTRUCTION PROCEDURES.

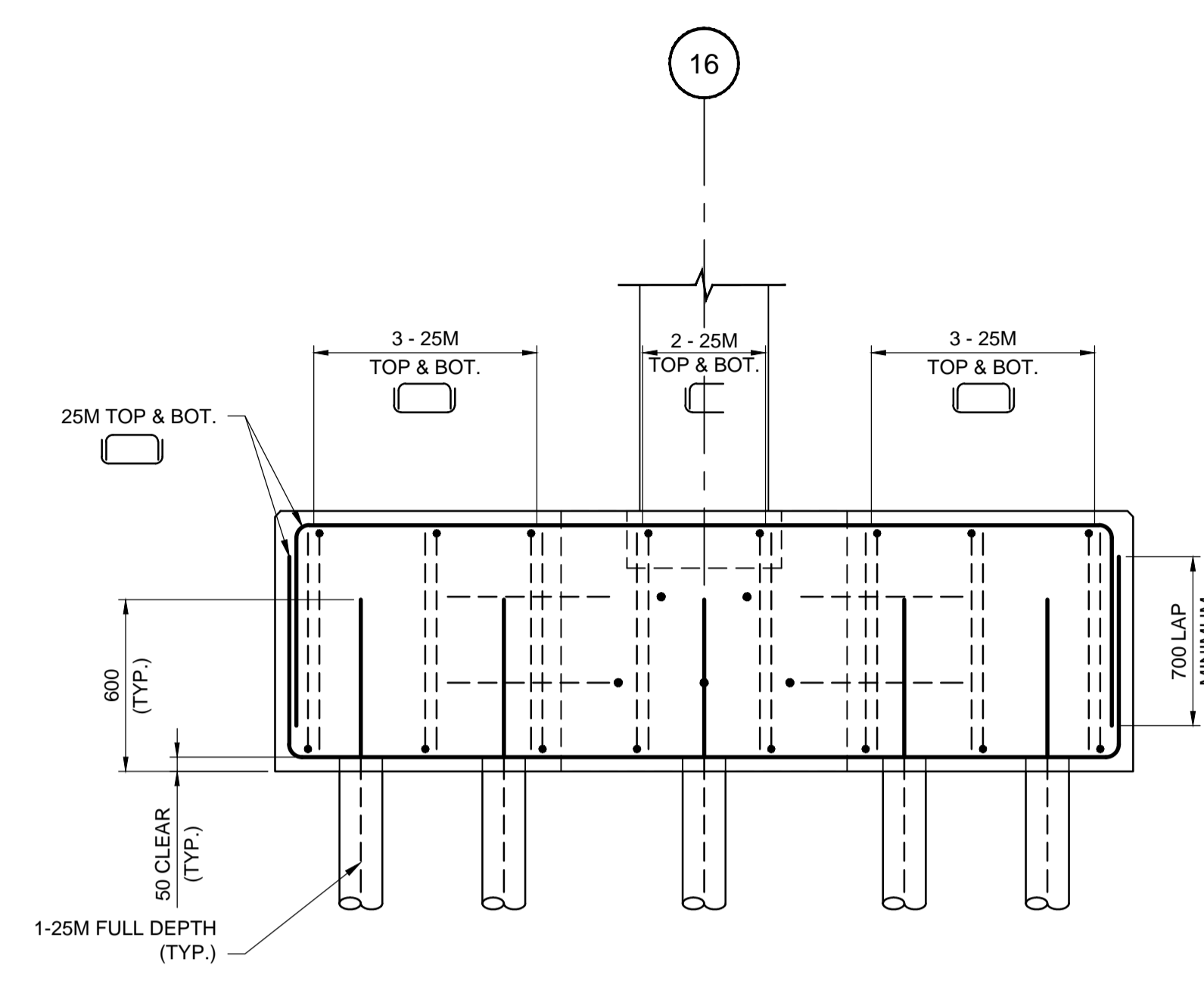


1 DETAIL 1:25
TYPICAL CONCRETE AND DOWEL LAYOUT

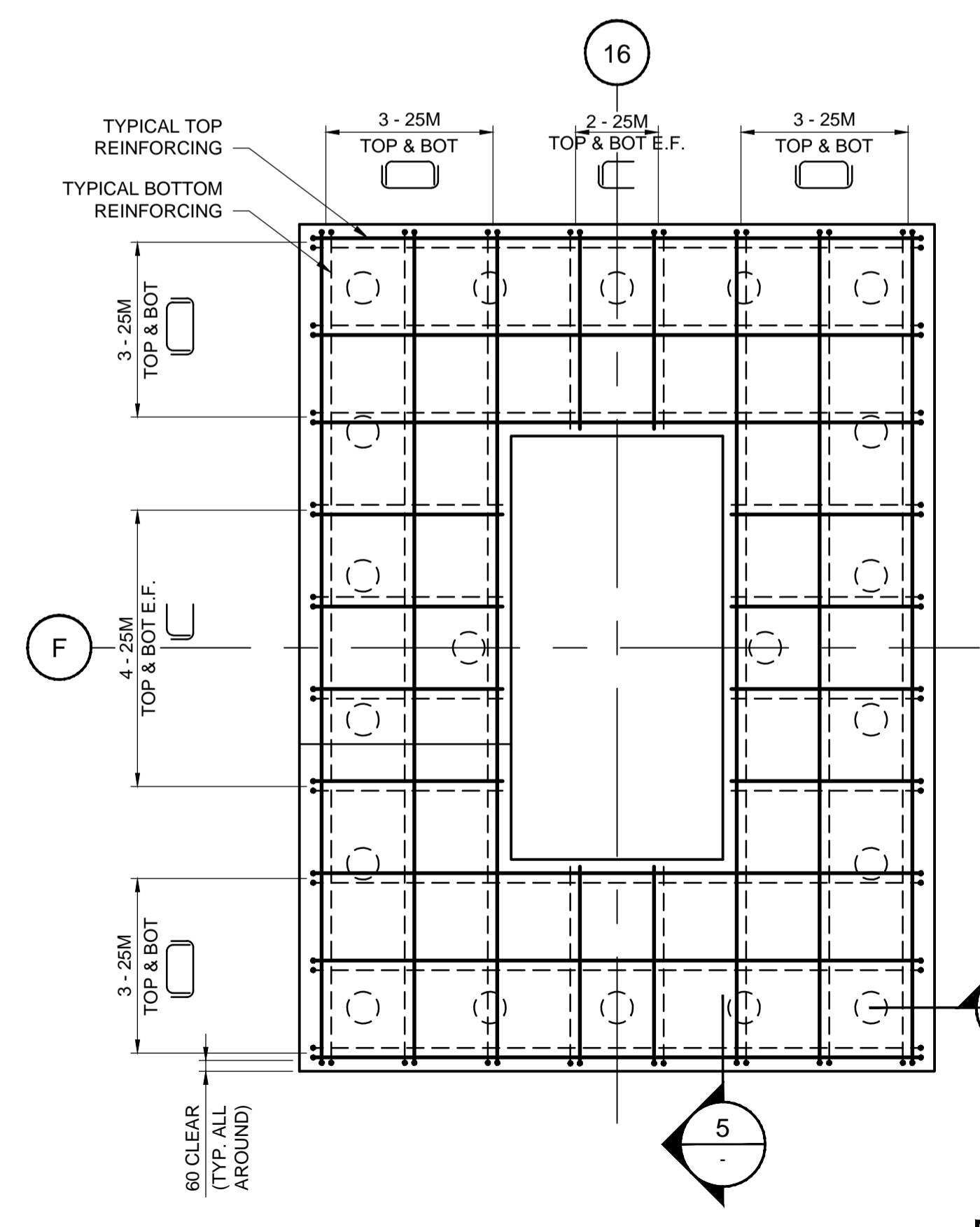
- SUGGESTED PILE INSTALLATION SEQUENCE:**
- 1 = DAY 1
 - 2 = DAY 2
 - 3 = DAY 3
 - 4 = DAY 4



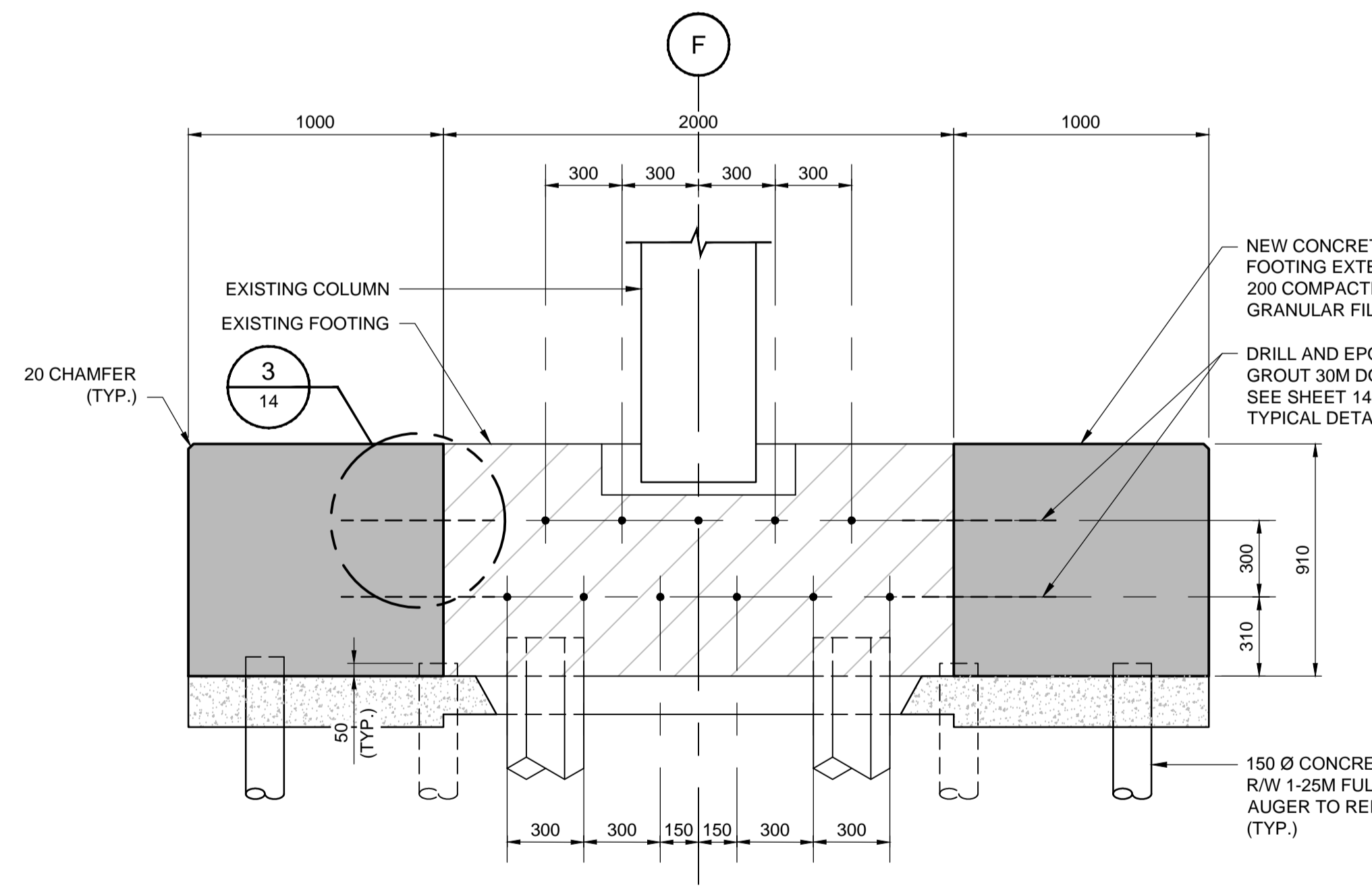
2 SECTION 1:20
DETAILING CONCRETE AND DOWEL LAYOUT



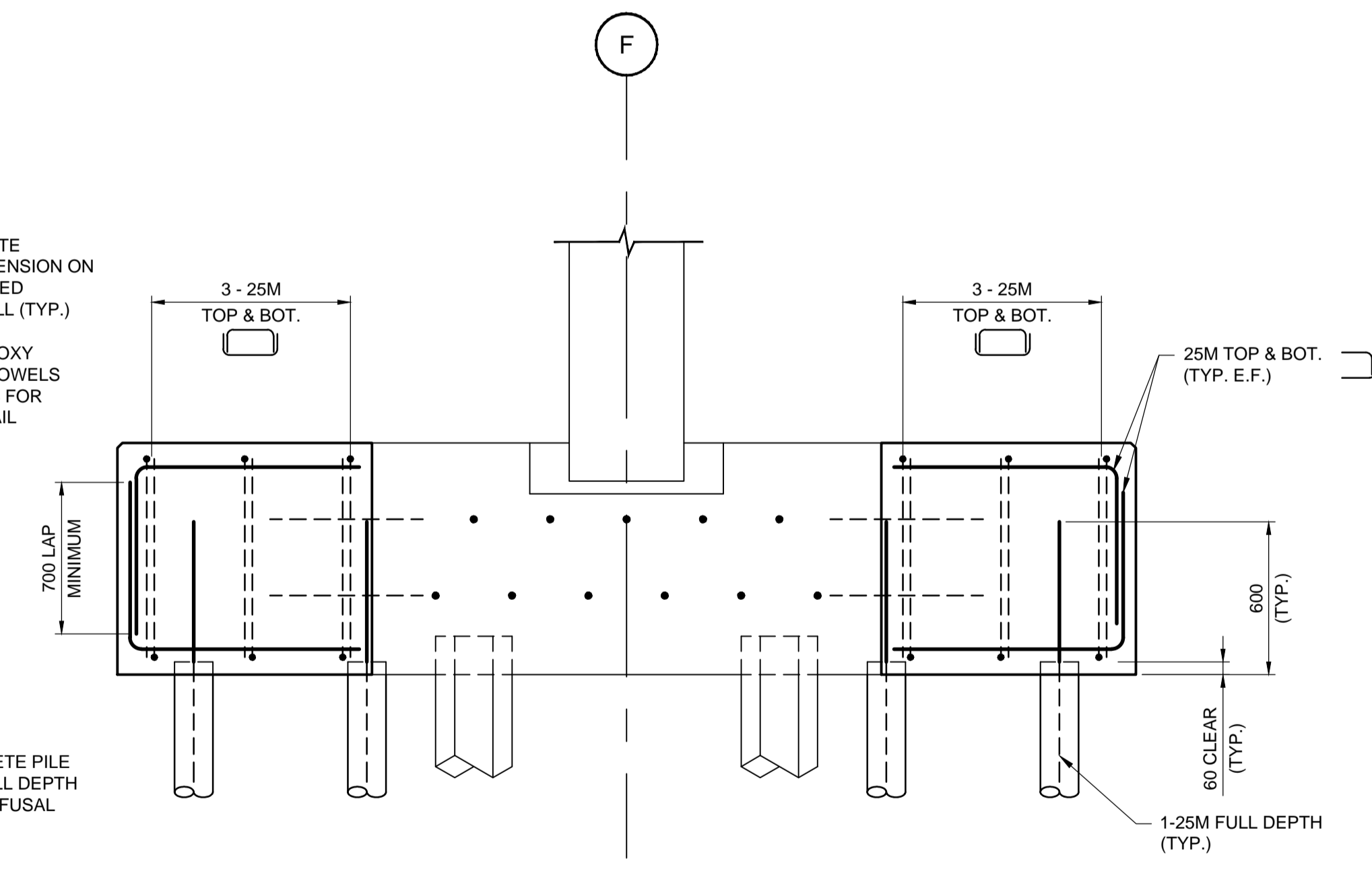
4 SECTION 1:20
DETAILING REINFORCING LAYOUT



1 DETAIL 1:25
TYPICAL REINFORCING LAYOUT



3 SECTION 1:20
DETAILING CONCRETE AND DOWEL LAYOUT



5 SECTION 1:20
DETAILING REINFORCING LAYOUT

LOCATION APPROVED
UNDERGROUND STRUCTURES
N/A
DATE

B.M. ELEV.	CHECKED BY	DRA
CONSTRUCTION COMPLETION DATE:	APPROVED BY	SSR
	DESIGNED BY	FAK
	DRAWN BY	TLK
	SCALE:	AS NOTED
1 ISSUED FOR TENDER	2015 11 20	SSR
NO.	REVISIONS	DATE
		2015 11 20

RELEASED FOR CONSTRUCTION
DATE

CONSULTANT DRAWING NUMBER
14-1411-S-104

SHEET OF
12 OF 47

THE CITY OF WINNIPEG
WATER AND WASTE DEPARTMENT
ENGINEERING DIVISION
WILKES RESERVOIR NORTH CELL REHABILITATION
CONCRETE REPAIRS
SECTION AND DETAILS, SHEET 1 OF 2
CONSTRUCTION PROCEDURE NOTES
CITY DRAWING NUMBER
1-0650R-S0005-001

APEGM
Certificate of Authorization
Dillon Consulting Limited (MB)
No. 1789 Date: 2015-11-20

METRIC
WHOLE NUMBERS INDICATE MILLIMETRES
DECIMALIZED NUMBERS INDICATE METRES