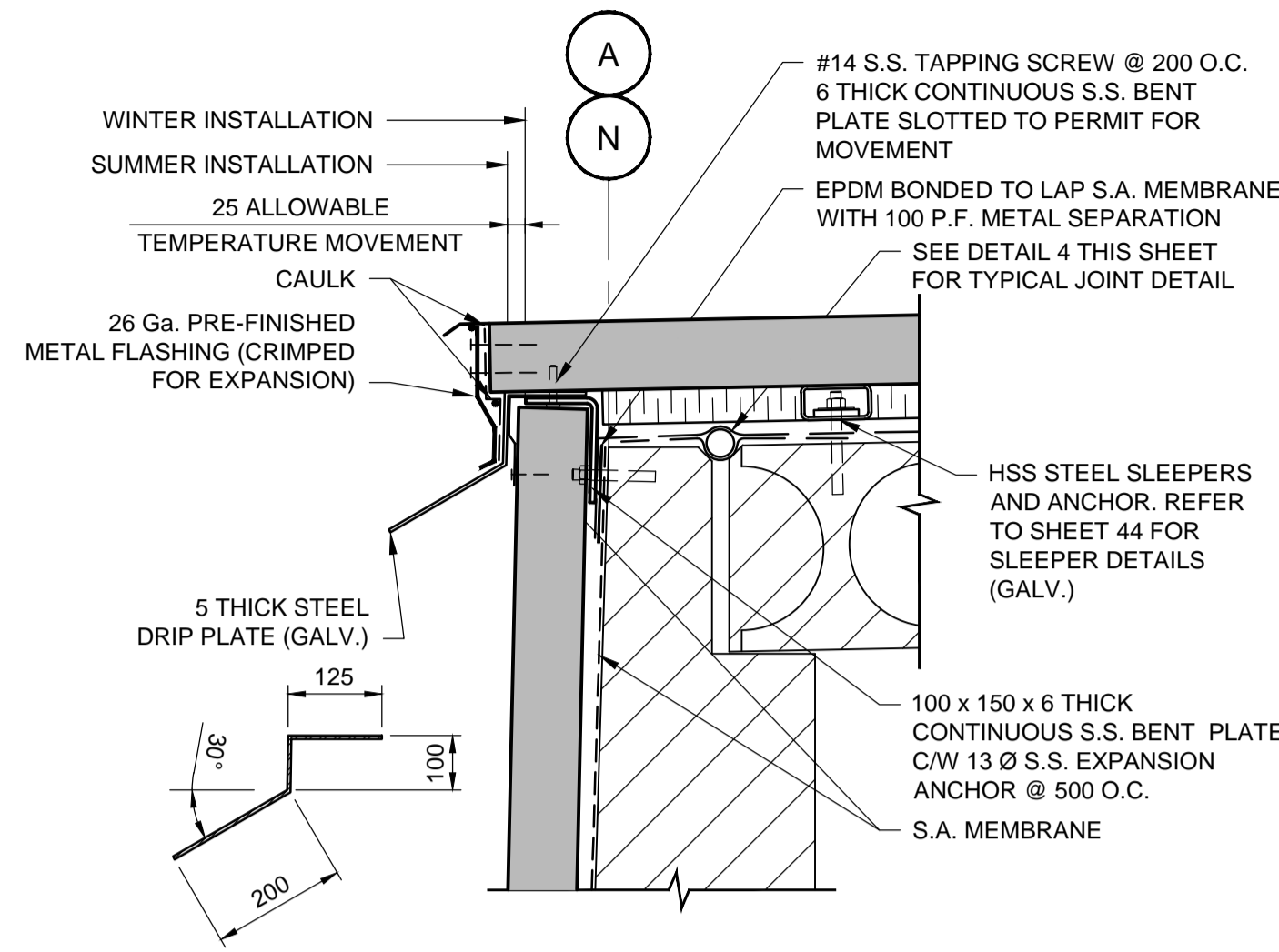
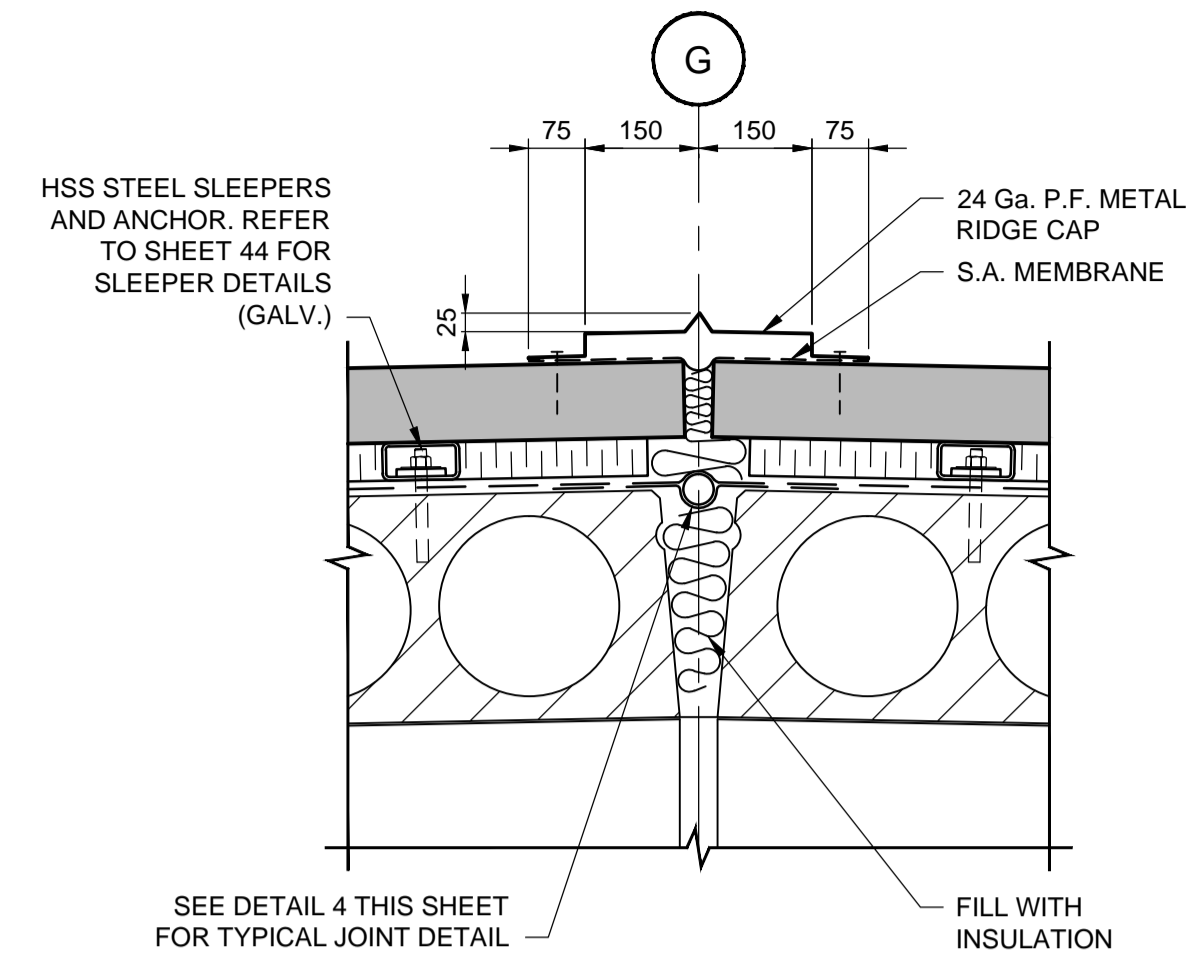


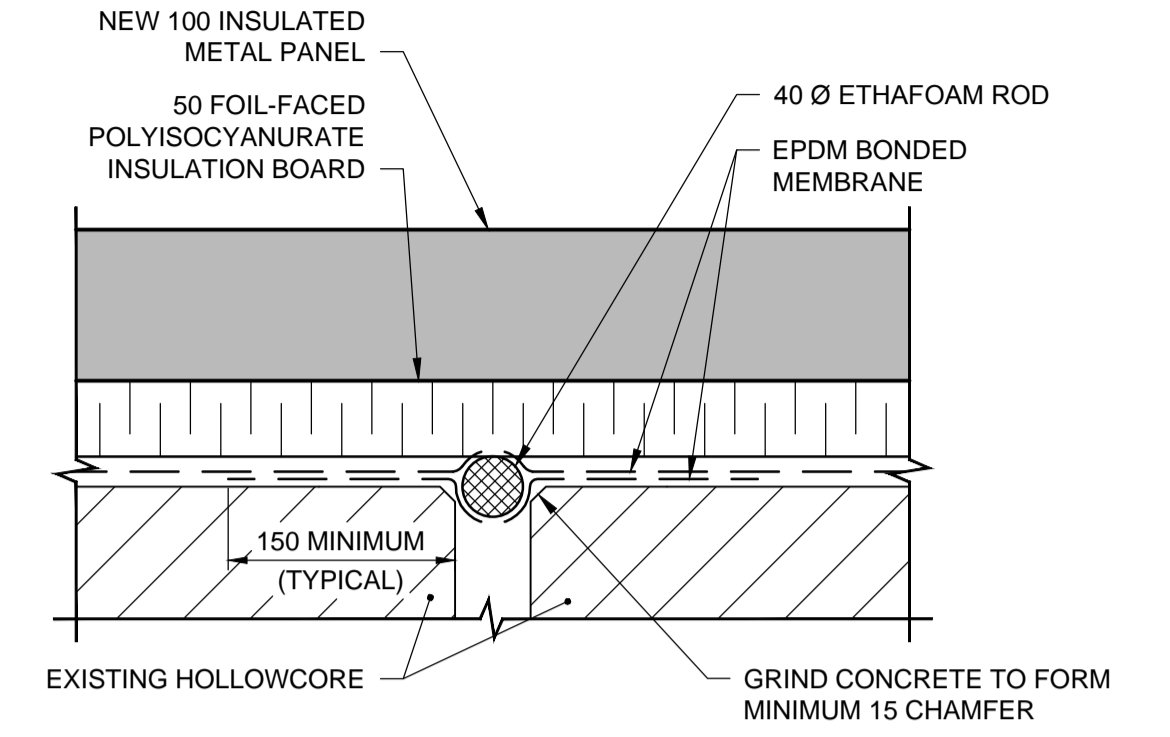
1 DETAIL 1:10
42



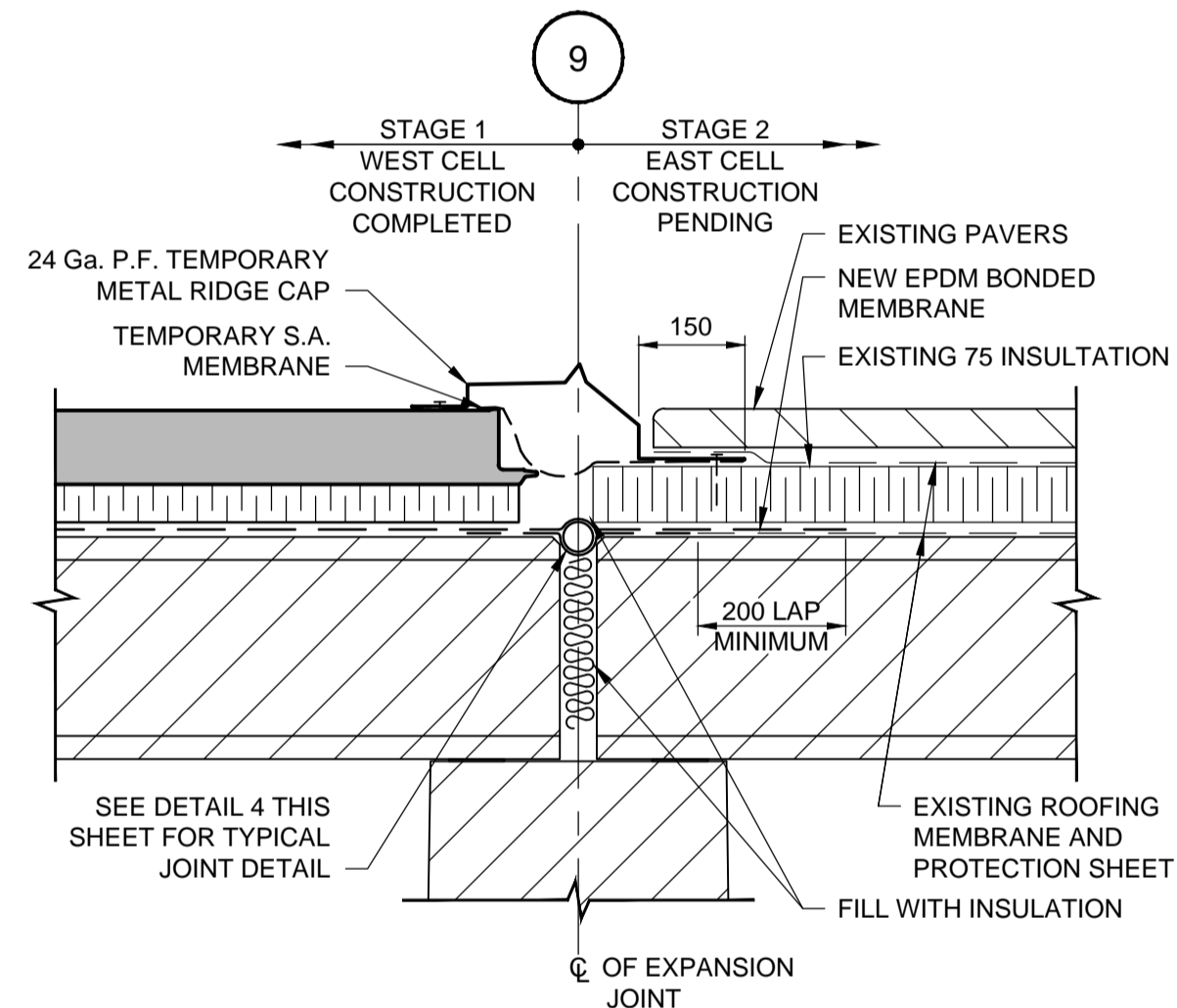
2 DETAIL 1:10
42



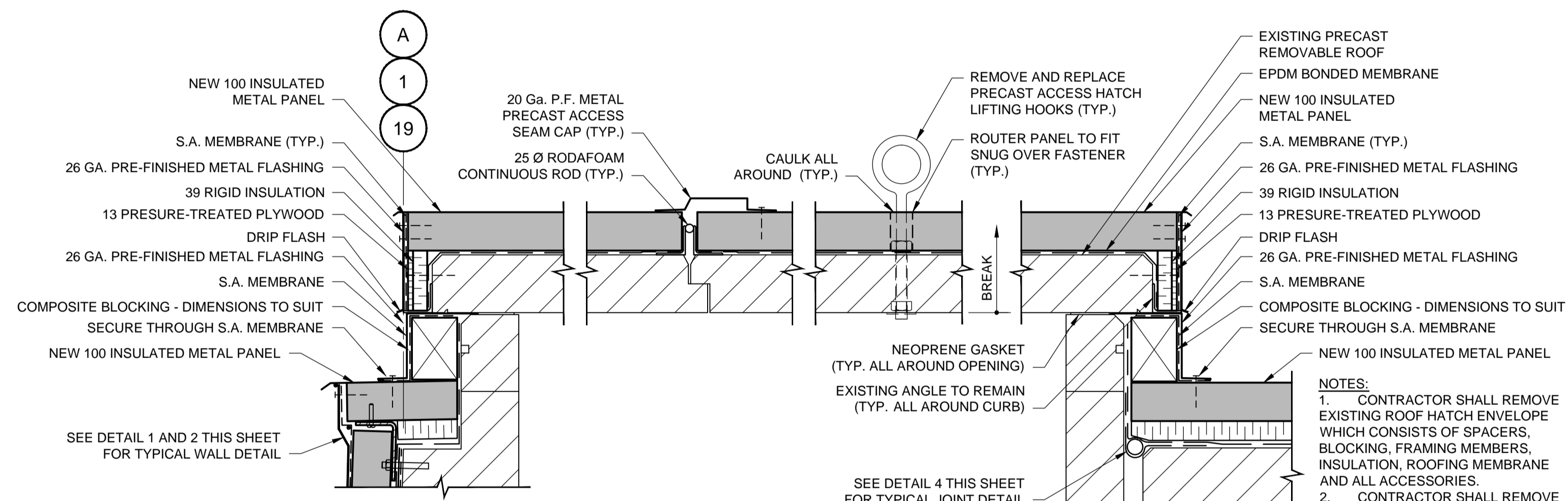
3 DETAIL 1:10
42 TYPICAL AT EXPANSION JOINT



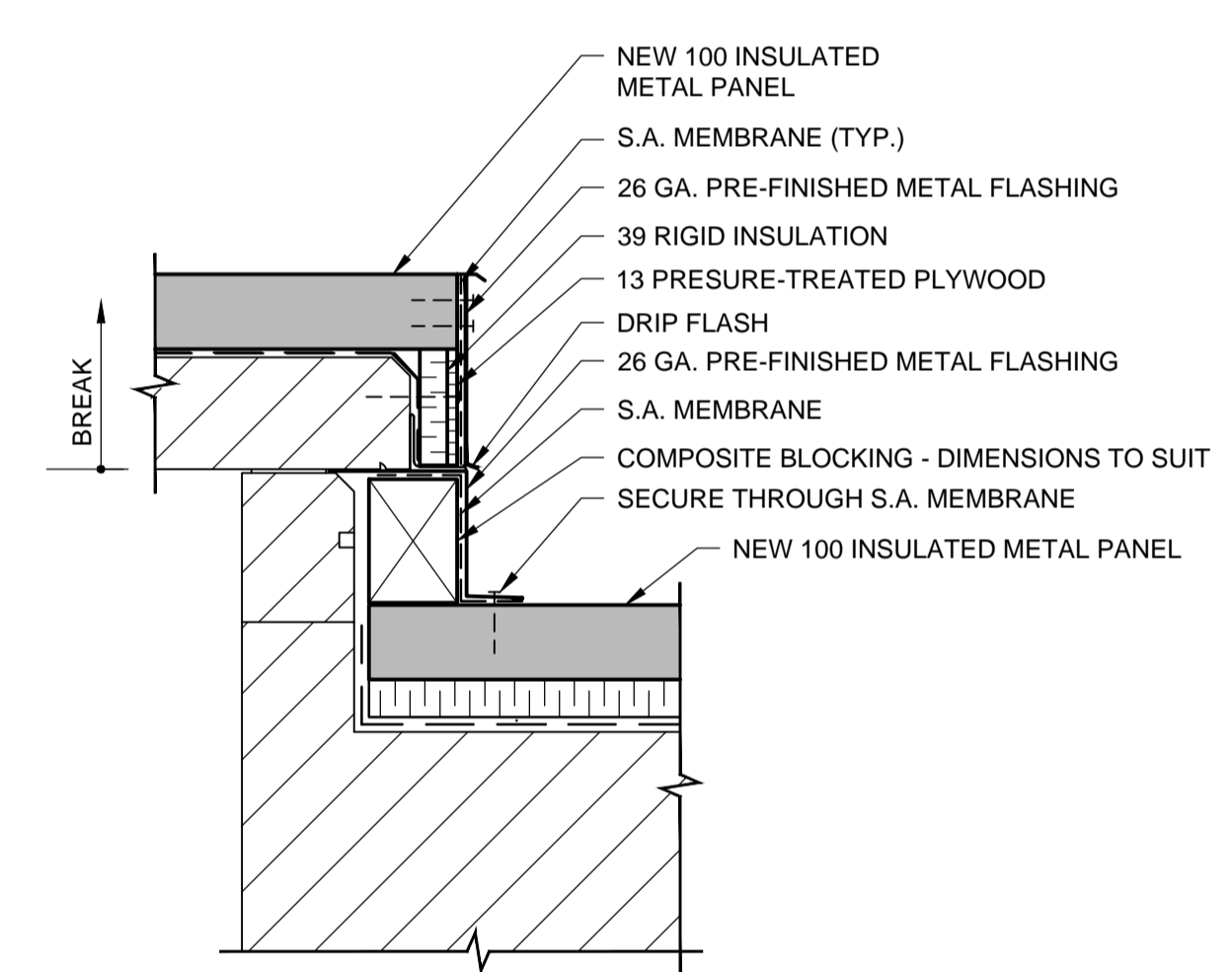
4 DETAIL 1:5
TYPICAL AT JOINT



5 DETAIL 1:10
RIDGE PROTECTION DETAIL BETWEEN STAGE 1 AND STAGE 2 CONSTRUCTION



6 DETAIL 1:10
ROOF ACCESS HATCH OPENING



7 DETAIL 1:10
ROOF ACCESS HATCH OPENING AT BEAM

METRIC

WHOLE NUMBERS INDICATE MILLIMETRES
DECIMALIZED NUMBERS INDICATE METRES



LOCATION APPROVED UNDERGROUND STRUCTURES		B.M. ELEV.
N/A		CONSTRUCTION COMPLETION DATE:
SUPV. U/G STRUCTURES COMMITTEE	DATE	
NOTE: LOCATION OF UNDERGROUND STRUCTURES AS SHOWN ARE BASED ON THE BEST INFORMATION AVAILABLE BUT NO GUARANTEE IS GIVEN THAT ALL EXISTING UTILITIES ARE SHOWN OR THAT THE GIVEN LOCATIONS ARE EXACT. CONFIRMATION OF EXISTENCE AND EXACT LOCATION OF ALL SERVICES MUST BE OBTAINED FROM THE INDIVIDUAL UTILITIES BEFORE PROCEEDING WITH CONSTRUCTION.		

CHECKED BY	FAK
APPROVED BY	SSR
DESIGNED BY	NC
DRAWN BY	TLK
SCALE:	AS NOTED
HORIZONTAL	
VERTICAL	
1 ISSUED FOR TENDER	2015 11 20
NO.	REVISIONS
DATE	BY
DATE	DATE
PLOT DATE: 2015 11 18	

ENGINEER'S SEAL	
DILLON CONSULTING	
RELEASED FOR CONSTRUCTION	DATE
CONSULTANT DRAWING NUMBER	14-1411-B-106

THE CITY OF WINNIPEG	
WATER AND WASTE DEPARTMENT ENGINEERING DIVISION	
WILKES RESERVOIR NORTH CELL REHABILITATION ROOF AND WALL ENVELOPE SECTIONS AND DETAILS SHEET 2 OF 3	
SHEET OF	CITY DRAWING NUMBER
43 OF 47	1-0650R-B0005-002