

GENERAL NOTES:

1. ALL PERSONNEL MUST OBTAIN THE SECURITY CLEARANCES IN ACCORDANCE WITH THE SPECIFICATIONS PRIOR TO ACCESSING THE SITE.
2. CONTRACTOR SHALL PROVIDE SECURITY GUARD SERVICES AT THE NORTH ACCESS GATE DURING WORKING HOURS IN ACCORDANCE WITH THE SPECIFICATIONS.
3. APPROXIMATE LOCATIONS AND ELEVATIONS OF EXISTING UTILITIES ARE SHOWN ON THE DRAWINGS. CONTRACTOR SHALL CONTACT THE APPROPRIATE UTILITY AUTHORITIES TO VERIFY THE INFORMATION.
4. IN ADDITION TO NOTE 3, AT THE LOCATION OF THE PROPOSED PIPE BRIDGE OFF OF WILLSON PLACE, THE CONTRACTOR SHALL VERIFY ALL UTILITIES BY SOFT DIGGING IN ACCORDANCE WITH THE SPECIFICATIONS.
5. CONTRACTORS EQUIPMENT SHALL NOT CROSS OR TRAVEL ALONG EITHER SIDE OF THE 1500 Ø BY-PASS PIPE WITHIN A MINIMUM LATERAL DISTANCE OF 5.0 m OF THE CENTERLINE OF THE 1500 Ø BY-PASS PIPE.
6. THE CITY OF WINNIPEG AND ITS AGENCIES REQUIRE THE USE OF RESERVOIR SERVICE ROADS ON 24/7 BASIS. THE CONTRACTOR SHALL MAINTAIN ACCESS TO THE RESERVOIR SERVICE ROADS AT ALL TIMES THROUGHOUT THE COURSE OF THE PROJECT. IF ANY WORK ACTIVITY REQUIRES TEMPORARY BLOCKING OF THE SERVICE ROADS, THE CONTRACTOR SHALL SUBMIT THE CONSTRUCTION PROCEDURE FOR APPROVAL BY THE CONTRACT ADMINISTRATOR PRIOR TO COMMENCING THE WORK.

PROPOSED CONSTRUCTION SEQUENCE:

1. ACCESS TO SITE FOR CONSTRUCTION OF THE LAYDOWN PAD TO BE PRIMARILY FROM THE NORTH ACCESS GATE OFF OF HURST WAY UNTIL COMPLETION OF THE CONCRETE PIPE BRIDGE.
2. ACCESS TO SITE FOR CONSTRUCTION OF THE CONCRETE PIPE BRIDGE SHALL BE FROM THE SOUTH SIDE OF THE RESERVOIR OFF OF WILLSON PLACE.
3. INSTALL TEMPORARY SNOW FENCING ALONG EAST SIDE OF 1500 DIA. BY-PASS PIPE. FENCING SHALL RUN PARALLEL WITH THE BY-PASS PIPE AND SHALL EXTEND TO NORTHERN LIMITS OF EXISTING CHAIN LINK FENCING.
4. INSTALL TEMPORARY SNOW FENCING AROUND UTILITIES AND OTHER CRITICAL INFRASTRUCTURE COMPONENTS AS DIRECTED BY THE CONTRACT ADMINISTRATOR.
5. INSTALL TEMPORARY SECURITY FENCING ALONG SOUTH SIDE OF PROPOSED LAYDOWN AREA PAD AS SHOWN ON THE DRAWINGS.
6. REMOVE EXISTING SECURITY FENCING ON THE SOUTH TO ALLOW CONSTRUCTION OF THE CONCRETE PIPE BRIDGE OFF OF WILLSON PLACE.
7. CONSTRUCT CONCRETE PIPE BRIDGE OVER 1500 DIA. BY-PASS PIPE.
8. CONSTRUCT LIMESTONE PAD.
9. CONCRETE PIPE BRIDGE AND LIMESTONE PAD CONSTRUCTION MAY BE CONCURRENT.
10. INSTALL NEW SECURITY FENCING AND GATES.
11. COMPLETE SITE RESTORATION AND RELATED SITE WORKS TO THE ORIGINAL CONDITION AS DOCUMENTED PRIOR TO THE COMMENCEMENT OF CONSTRUCTION IN ACCORDANCE WITH THE SPECIFICATIONS.

SITE PLAN
1:500

METRIC

WHOLE NUMBERS INDICATE MILLIMETRES
DECIMALIZED NUMBERS INDICATE METRES

APEGM
Certificate of Authorization
Dillon Consulting Limited (MB)
No. 1789 Date: 2015-08-31

LOCATION APPROVED UNDERGROUND STRUCTURES	
N/A	
SUPV. U/G STRUCTURES COMMITTEE	DATE
NOTE: LOCATION OF UNDERGROUND STRUCTURES AS SHOWN ARE BASED ON THE BEST INFORMATION AVAILABLE BUT NO GUARANTEE IS GIVEN THAT ALL EXISTING UTILITIES ARE SHOWN OR THAT THE GIVEN LOCATIONS ARE EXACT. CONFIRMATION OF EXISTENCE AND EXACT LOCATION OF ALL SERVICES MUST BE OBTAINED FROM THE INDIVIDUAL UTILITIES BEFORE PROCEEDING WITH CONSTRUCTION.	

B.M. ELEV.	CHECKED BY	SSR
CONSTRUCTION COMPLETION DATE:	APPROVED BY	SSR
	DESIGNED BY	FAK
	DRAWN BY	tik
	SCALE:	HORIZONTAL 1:500
		VERTICAL
0 ISSUED FOR TENDER	2015-08-31	SSR
NO.	REVISIONS	DATE BY
		20105-08-31
PLOT DATE: 2015 08 28		

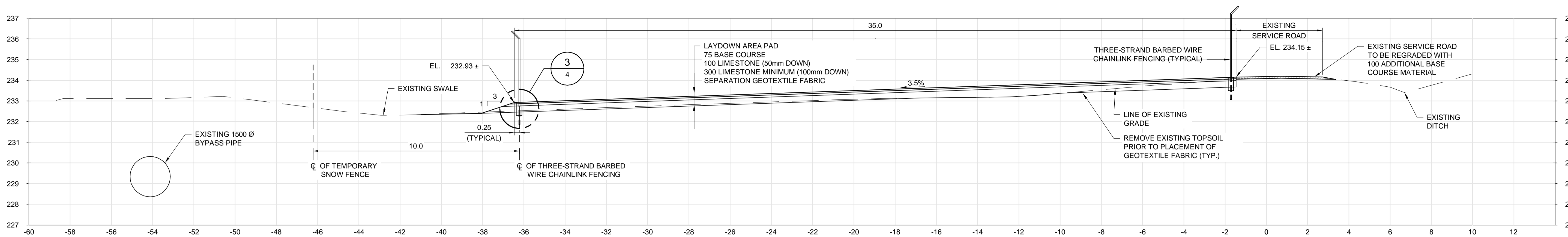
RELEASED FOR CONSTRUCTION	DATE

DILLON CONSULTING

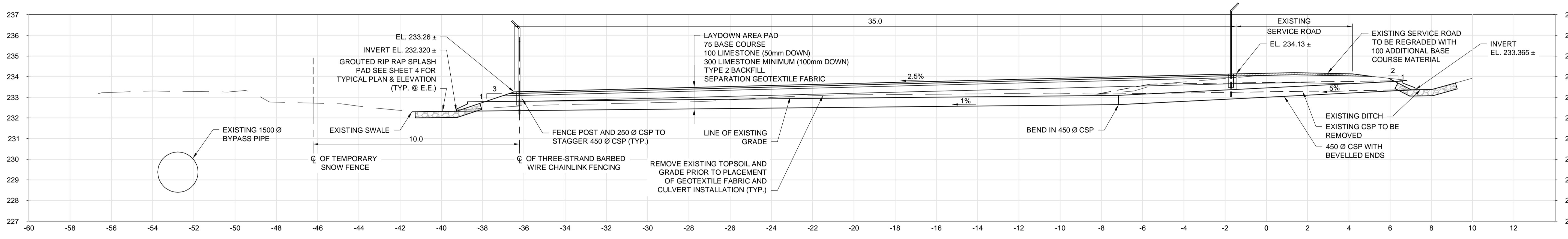
ENGINEER'S SEAL
CONSULTANT DRAWING NUMBER
14-1411-C-100

THE CITY OF WINNIPEG
WATER AND WASTE DEPARTMENT
ENGINEERING DIVISION
WILKES RESERVOIR NORTH CELL REHABILITATION
CONSTRUCTION OF LAYDOWN AREA
SITE PLAN

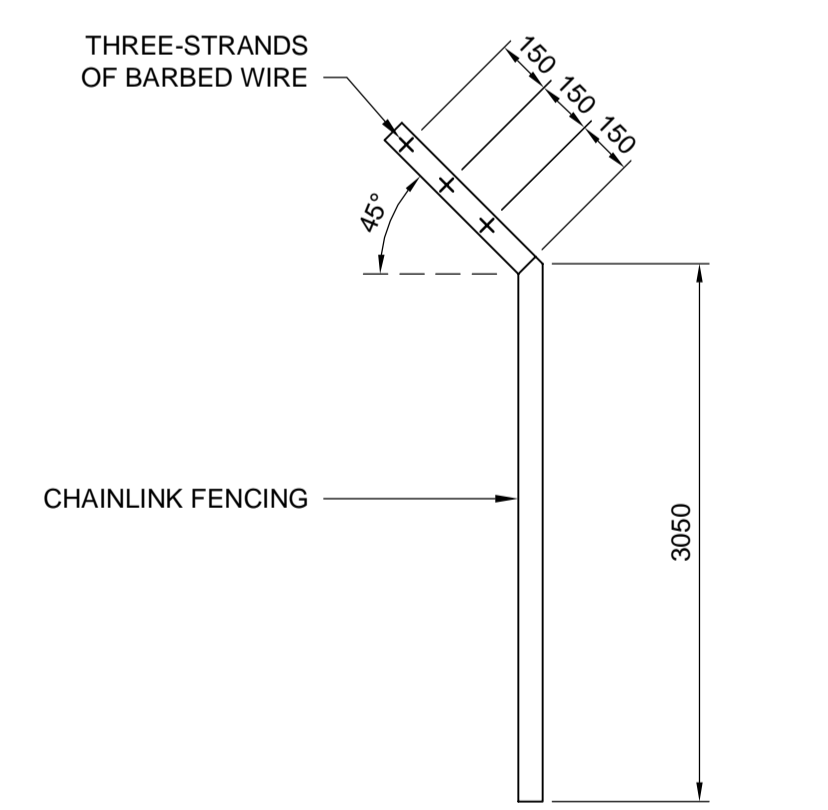
SHEET	OF	CITY DRAWING NUMBER
2	4	1-0650R-C0001-001



1 SECTION 1:100



2 SECTION 2:100 AT CULVERT



TYPICAL FENCING PROFILE NTS

METRIC

WHOLE NUMBERS INDICATE MILLIMETRES
DECIMALIZED NUMBERS INDICATE METRES

APEGM
Certificate of Authorization
Dillon Consulting Limited (MB)
No. 1789 Date: 2015-08-31

LOCATION APPROVED UNDERGROUND STRUCTURES	
N/A	
SUPV. U/G STRUCTURES COMMITTEE	DATE
NOTE: LOCATION OF UNDERGROUND STRUCTURES AS SHOWN ARE BASED ON THE BEST INFORMATION AVAILABLE BUT NO GUARANTEE IS GIVEN THAT ALL EXISTING UTILITIES ARE SHOWN OR THAT THE GIVEN LOCATIONS ARE EXACT. CONFIRMATION OF EXISTENCE AND EXACT LOCATION OF ALL SERVICES MUST BE OBTAINED FROM THE INDIVIDUAL UTILITIES BEFORE PROCEEDING WITH CONSTRUCTION.	

B.M. ELEV.	CHECKED BY	SSR
CONSTRUCTION COMPLETION DATE:	APPROVED BY	SSR
	DESIGNED BY	R.P.
	DRAWN BY	tkk
	SCALE:	AS NOTED
	HORIZONTAL	
	VERTICAL	
0 ISSUED FOR TENDER	2015-08-31	SSR
NO.	REVISIONS	DATE BY
		2015-08-31

DILLON CONSULTING

RELEASED FOR CONSTRUCTION

CONSULTANT DRAWING NUMBER
14-1411-C-101

PLOT DATE: 2015 08 28

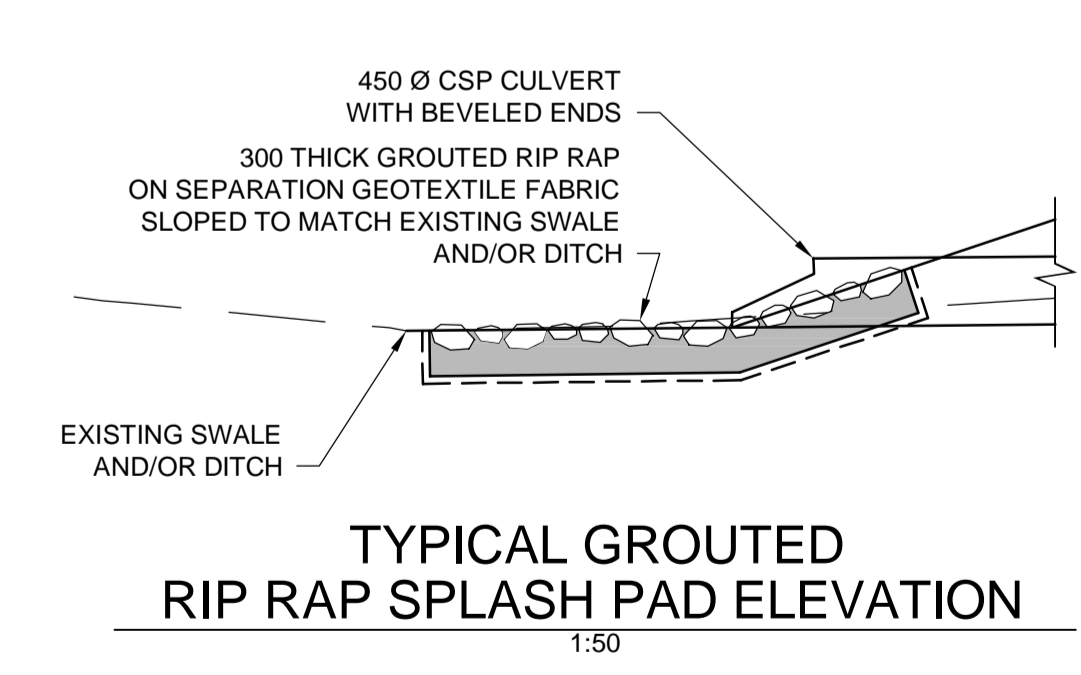
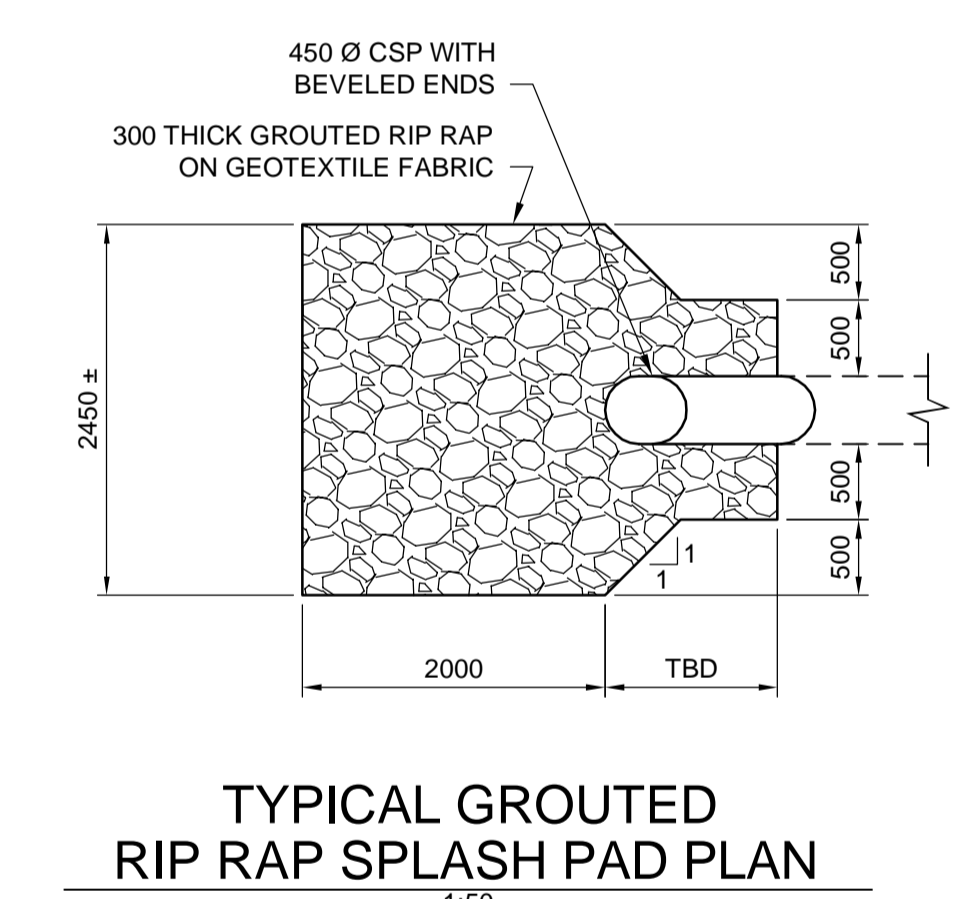
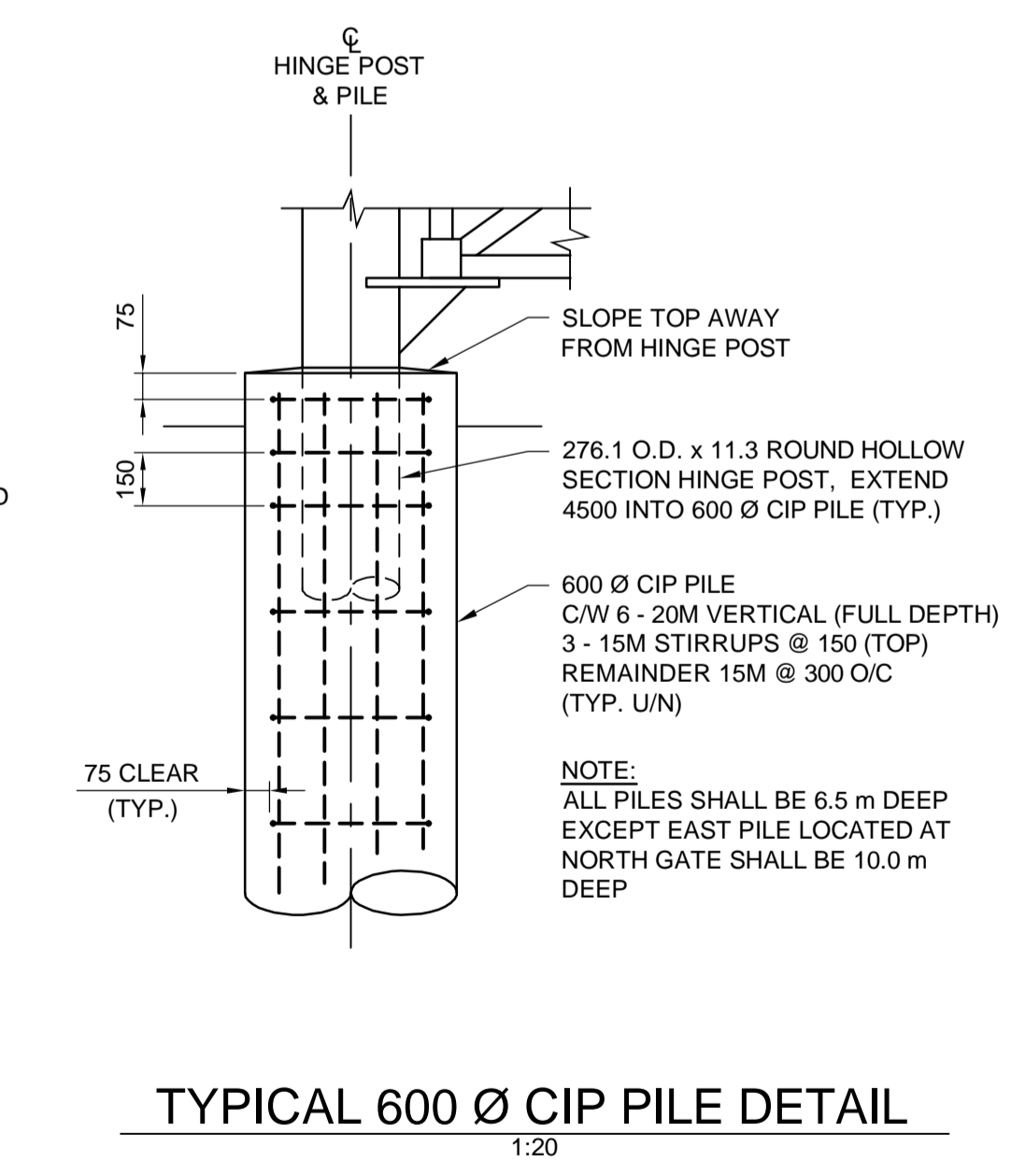
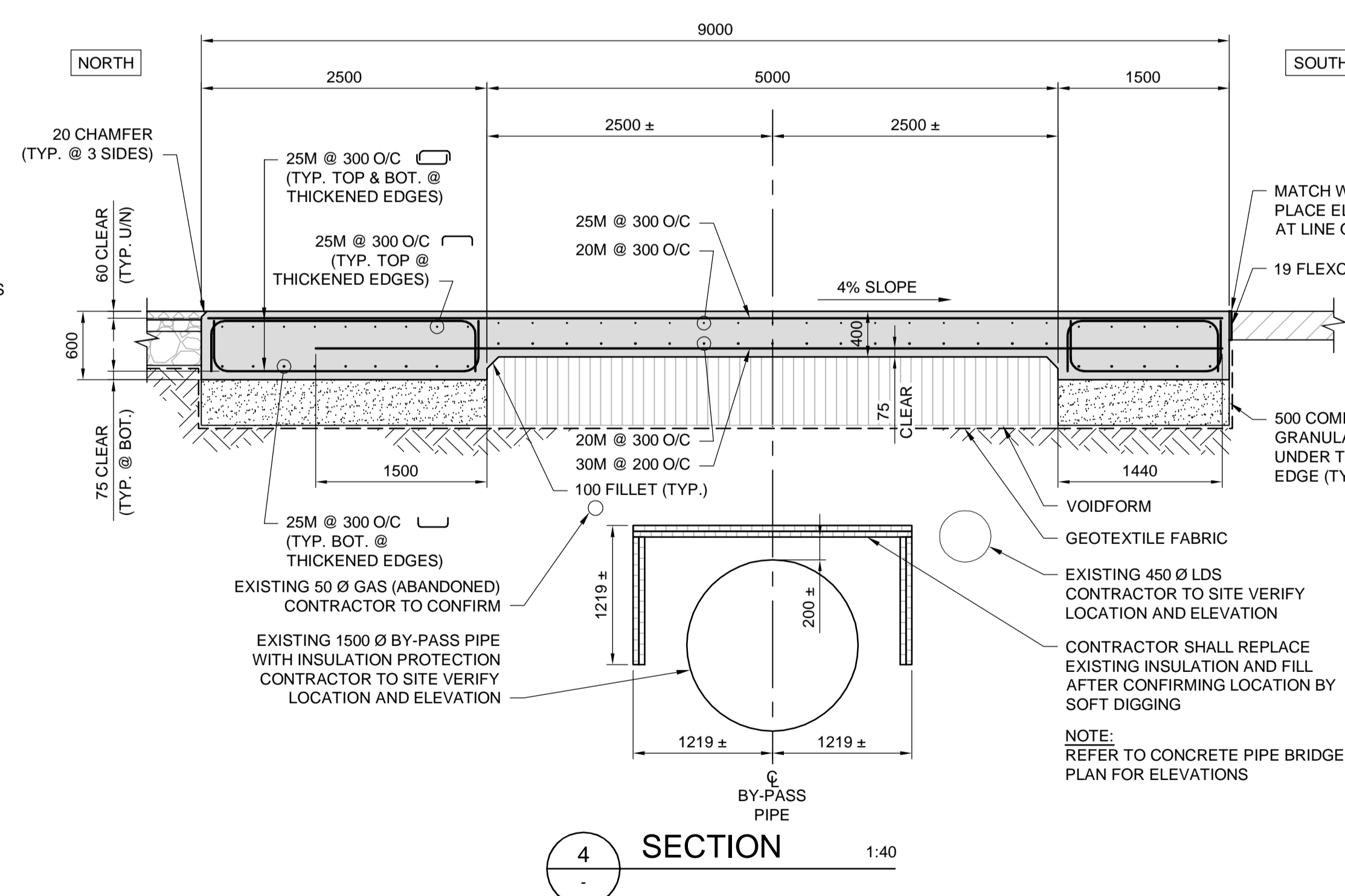
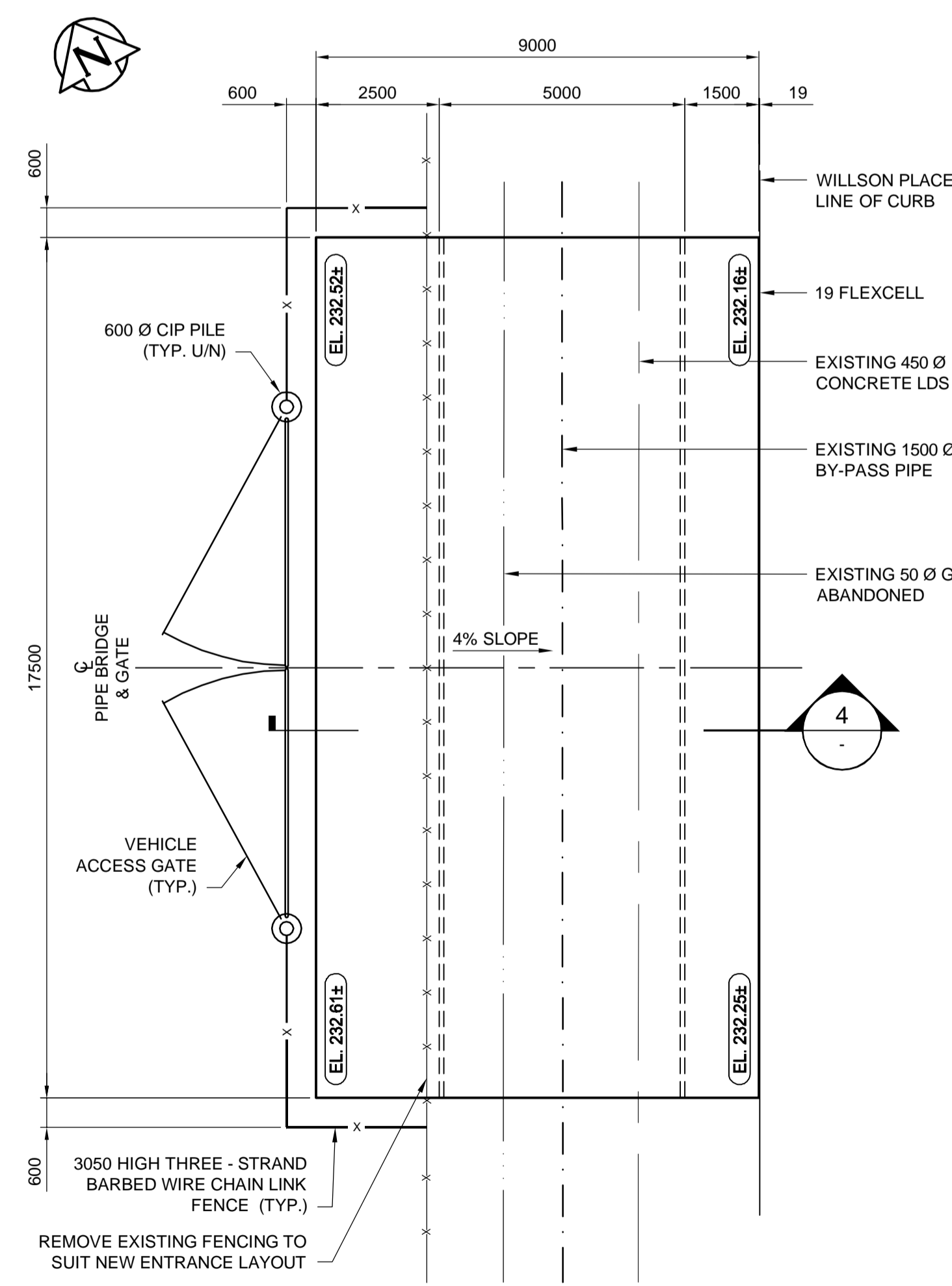
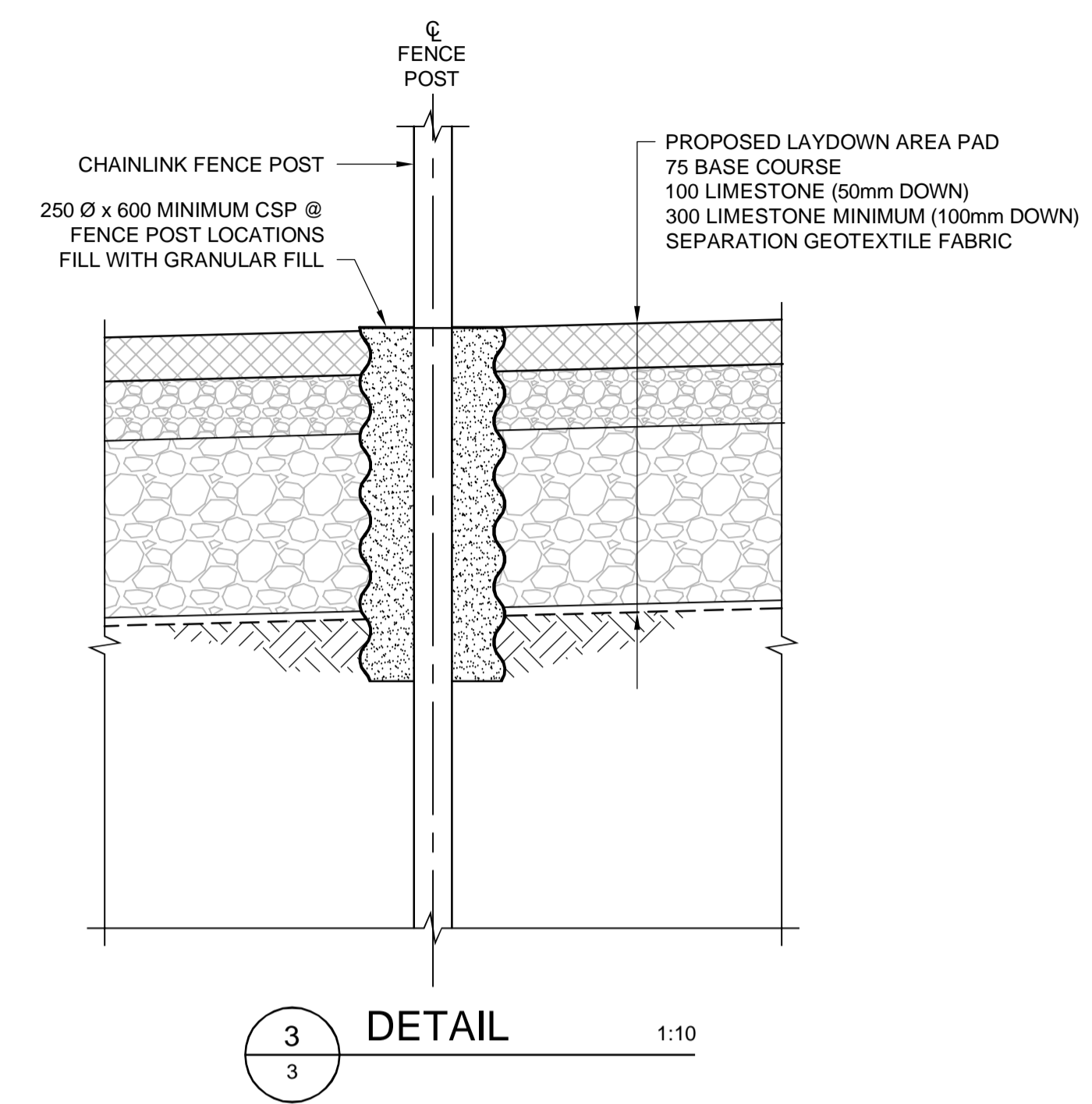
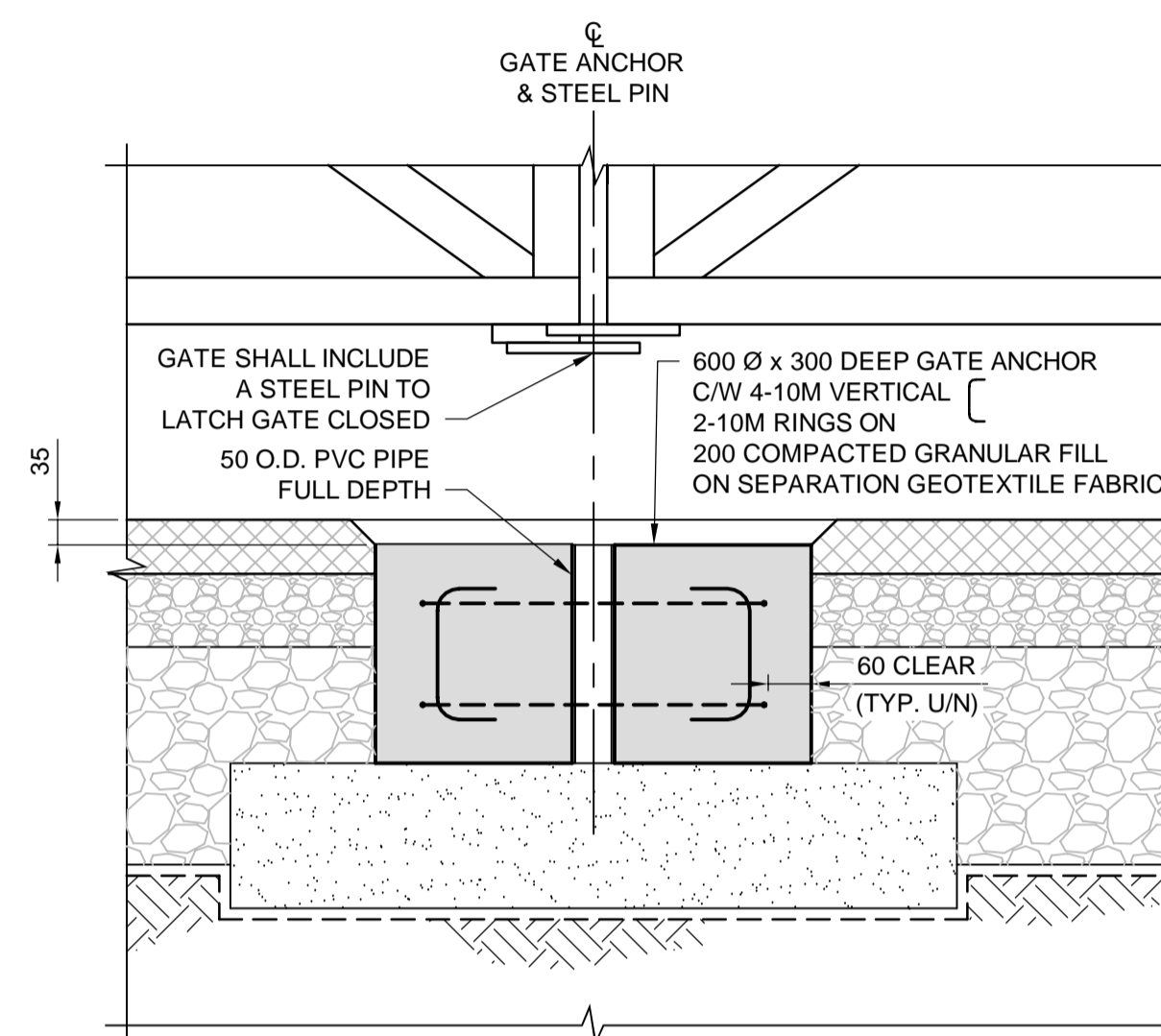
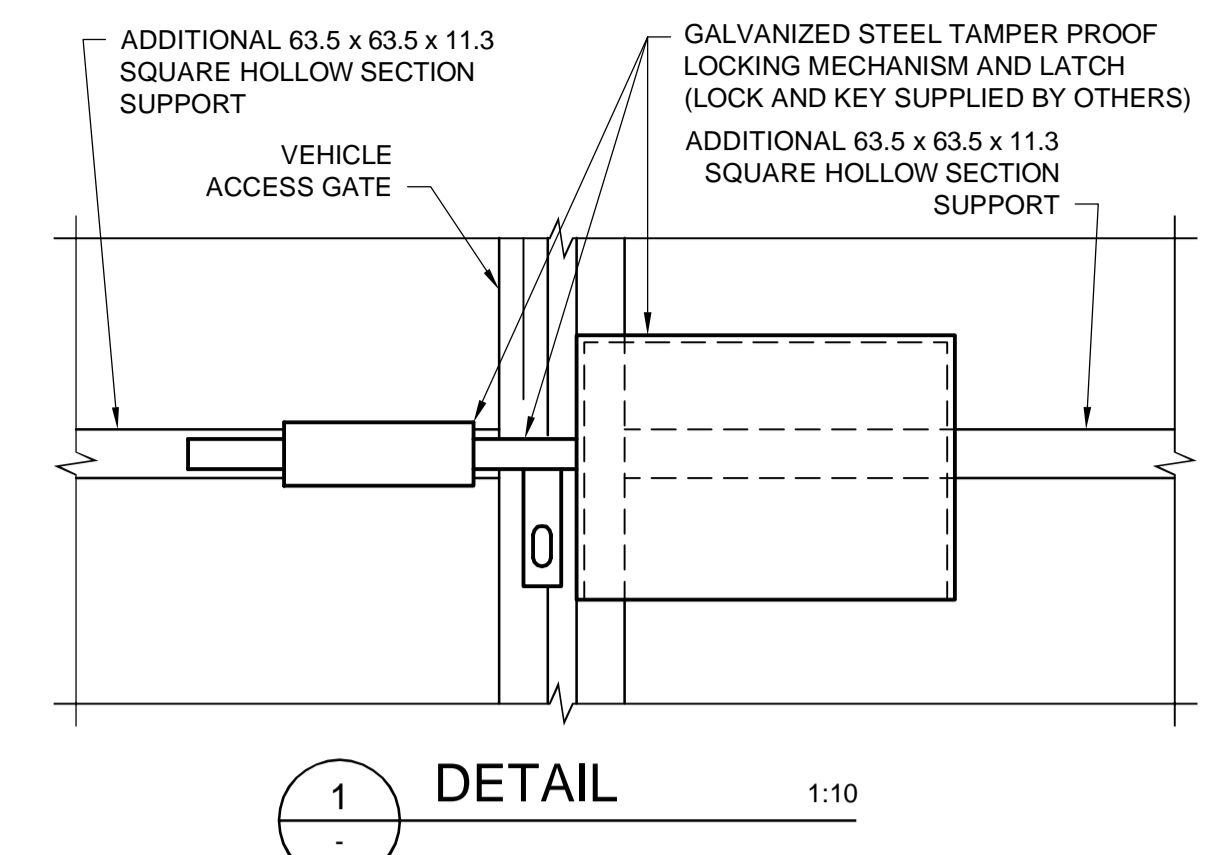
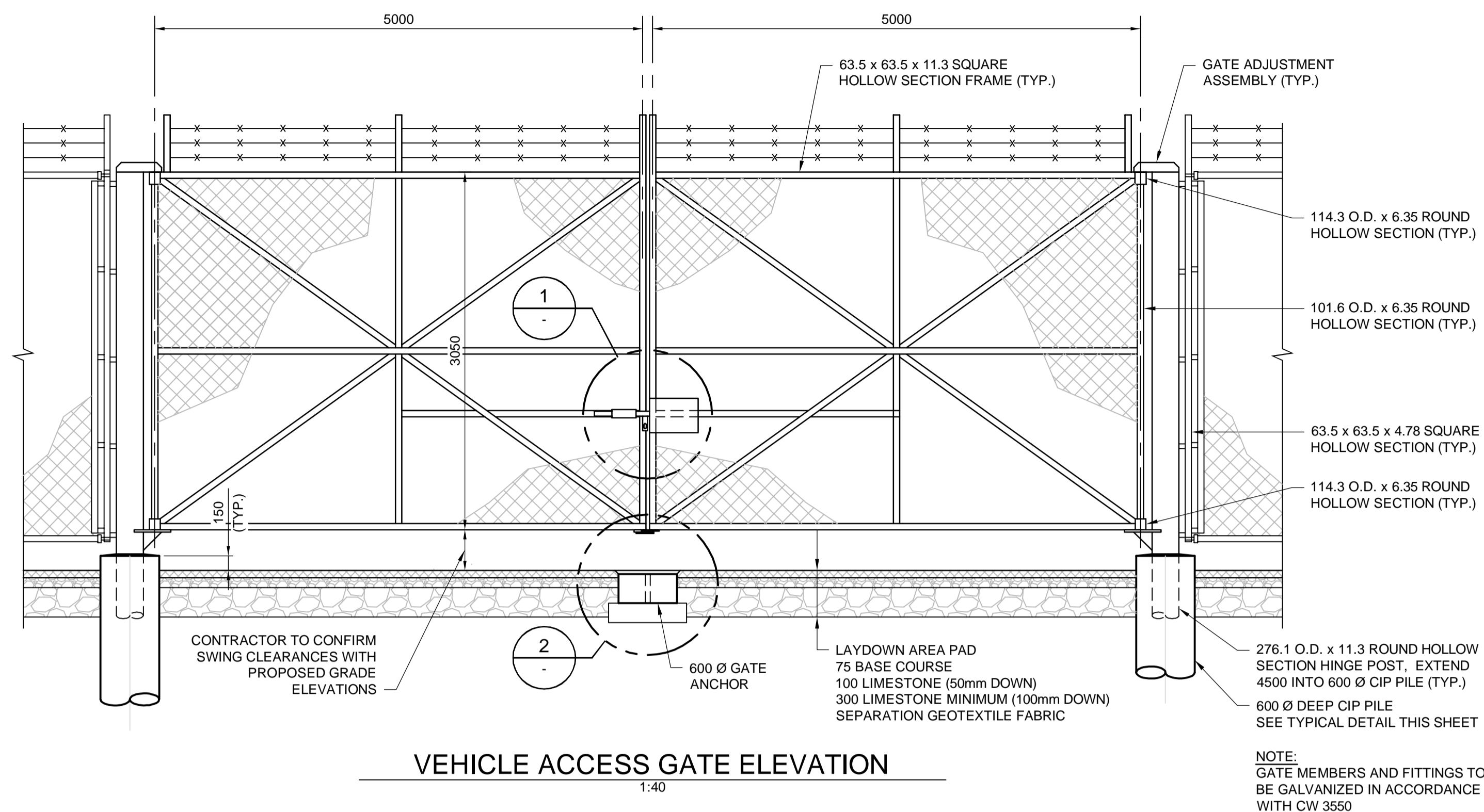
ENGINEER'S SEAL

CONSULTANT DRAWING NUMBER
14-1411-C-101

THE CITY OF WINNIPEG
WATER AND WASTE DEPARTMENT
ENGINEERING DIVISION

WILKES RESERVOIR NORTH CELL REHABILITATION
CONSTRUCTION OF LAYDOWN AREA
LAYDOWN AREA SECTIONS

SHEET 3 OF 4 CITY DRAWING NUMBER
1-0650R-C0002-001



METRIC
WHOLE NUMBERS INDICATE MILLIMETRES
DECIMALIZED NUMBERS INDICATE METRES

APEGM
Certificate of Authorization
Dillon Consulting Limited (MB)
No. 1789 Date: 2015-08-31

LOCATION APPROVED UNDERGROUND STRUCTURES		B.M. ELEV.		CHECKED BY		SSR	
N/A		CONSTRUCTION COMPLETION DATE:		APPROVED BY		SSR	
SUPV. U/G STRUCTURES COMMITTEE		DATE		DESIGNED BY		FAK	
NOTE: LOCATION OF UNDERGROUND STRUCTURES AS SHOWN ARE BASED ON THE BEST INFORMATION AVAILABLE BUT NO GUARANTEE IS GIVEN THAT ALL EXISTING UTILITIES ARE SHOWN OR THAT THE GIVEN LOCATIONS ARE EXACT. CONFIRMATION OF EXISTENCE AND EXACT LOCATION OF ALL SERVICES MUST BE OBTAINED FROM THE INDIVIDUAL UTILITIES BEFORE PROCEEDING WITH CONSTRUCTION.		SCALE: HORIZONTAL AS NOTED VERTICAL		DRAWN BY		tik	
0 ISSUED FOR TENDER		2015-08-31		DATE		2015-08-31	
NO. REVISIONS		DATE		BY		DATE	
		2015-08-28					

DILLON CONSULTING

RELEASED FOR CONSTRUCTION

CONSULTANT DRAWING NUMBER
14-1411-C-102

CONTRACT NUMBER:
1-0650R-C0003-001

THE CITY OF WINNIPEG
WATER AND WASTE DEPARTMENT
ENGINEERING DIVISION

WILKES RESERVOIR NORTH CELL REHABILITATION
CONSTRUCTION OF LAYDOWN AREA
TYPICAL SECTIONS AND DETAILS

SHEET 4 OF 4

CITY DRAWING NUMBER
1-0650R-C0003-001

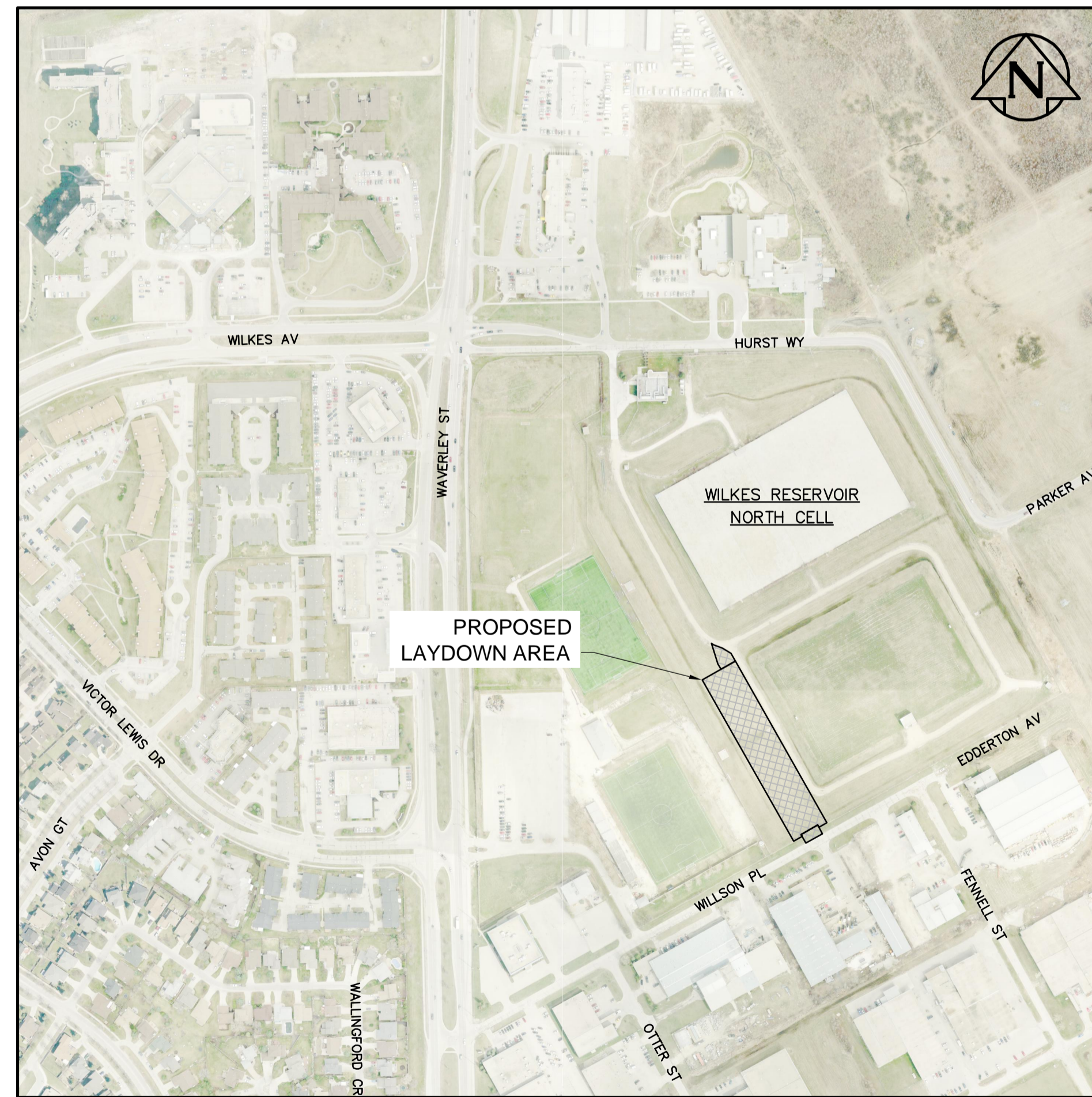


THE CITY OF WINNIPEG

WATER AND WASTE DEPARTMENT
ENGINEERING DIVISION

WILKES RESERVOIR NORTH CELL REHABILITATION CONSTRUCTION OF LAYDOWN AREA

BID OPPORTUNITY 711-2015



KEY MAP

DRAWING INDEX

SHEET NUMBER	CITY OF WINNIPEG DRAWING NUMBER	CONSULTANT DRAWING NUMBER	REVISION	DRAWING TITLE
GENERAL				
1	1-0650R-D0001-001	14-1411-G-100	A	COVER SHEET AND DRAWING INDEX
CIVIL				
2	1-0650R-C0001-001	14-1411-C-100	A	SITE PLAN
3	1-0650R-C0002-001	14-1411-C-101	A	LAYDOWN AREA SECTIONS
4	1-0650R-C0003-001	14-1411-C-102	A	TYPICAL SECTIONS AND DETAILS