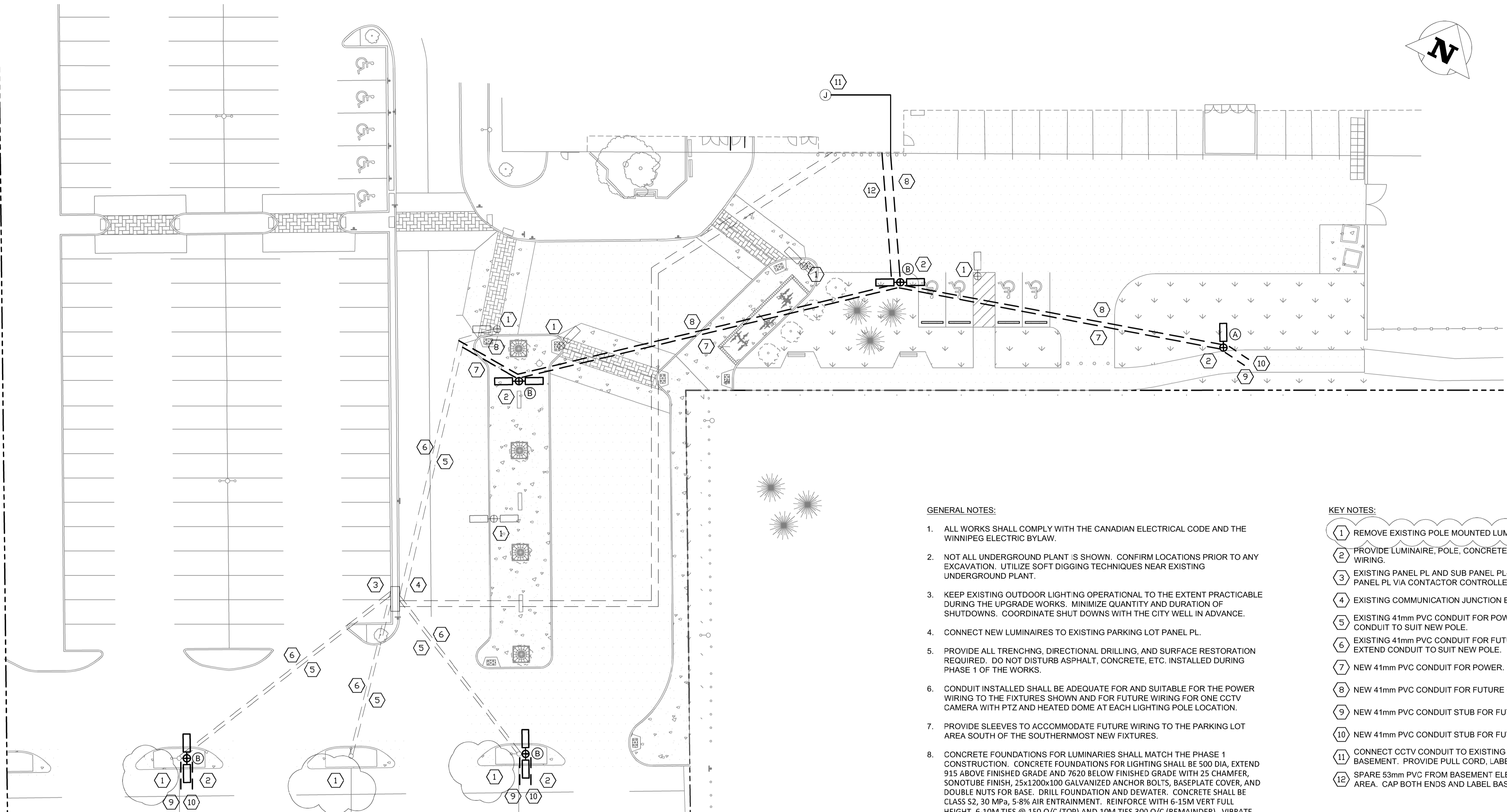


POSEIDON BAY



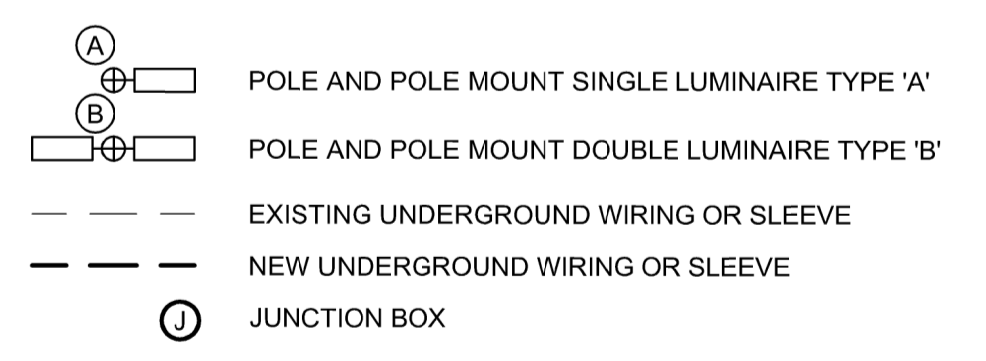
GENERAL NOTES:

- ALL WORKS SHALL COMPLY WITH THE CANADIAN ELECTRICAL CODE AND THE WINNIPEG ELECTRIC BYLAW.
- NOT ALL UNDERGROUND PLANT IS SHOWN. CONFIRM LOCATIONS PRIOR TO ANY EXCAVATION. UTILIZE SOFT DIGGING TECHNIQUES NEAR EXISTING UNDERGROUND PLANT.
- KEEP EXISTING OUTDOOR LIGHTING OPERATIONAL TO THE EXTENT PRACTICABLE DURING THE UPGRADE WORKS. MINIMIZE QUANTITY AND DURATION OF SHUTDOWNS. COORDINATE SHUT DOWNS WITH THE CITY WELL IN ADVANCE.
- CONNECT NEW LUMINAIRES TO EXISTING PARKING LOT PANEL PL.
- PROVIDE ALL TRENCHNG, DIRECTIONAL DRILLING, AND SURFACE RESTORATION REQUIRED. DO NOT DISTURB ASPHALT, CONCRETE, ETC. INSTALLED DURING PHASE 1 OF THE WORKS.
- CONDUIT INSTALLED SHALL BE ADEQUATE FOR AND SUITABLE FOR THE POWER WIRING TO THE FIXTURES SHOWN AND FOR FUTURE WIRING FOR ONE CCTV CAMERA WITH PTZ AND HEATED DOME AT EACH LIGHTING POLE LOCATION.
- PROVIDE SLEEVES TO ACCOMMODATE FUTURE WIRING TO THE PARKING LOT AREA SOUTH OF THE SOUTHERNMOST NEW FIXTURES.
- CONCRETE FOUNDATIONS FOR LUMINAIRES SHALL MATCH THE PHASE 1 CONSTRUCTION. CONCRETE FOUNDATIONS FOR LIGHTING SHALL BE 500 DIA, EXTEND 915 ABOVE FINISHED GRADE AND 7620 BELOW FINISHED GRADE WITH 25 CHAMFER, SONOTUBE FINISH. 25x1200x100 GALVANIZED ANCHOR BOLTS, BASEPLATE COVER, AND DOUBLE NUTS FOR BASE. DRILL FOUNDATION AND DEWATER. CONCRETE SHALL BE CLASS S2, 30 MPa, 5-8% AIR ENTRAINMENT. REINFORCE WITH 6-15M VERT FULL HEIGHT, 6-10M TIES @ 150 O/C (TOP) AND 10M TIES 300 O/C (REMAINDER). VIBRATE WHILE POURING CONCRETE. DO NOT OVER VIBRATE. TOOL SHALL HAVE MAX 10 000 VIBRATIONS PER MINUTE.
- SEAL BASEMENT WALL PENETRATIONS PERMANENTLY WATER TIGHT.
- REMOVE EXISTING POLE MOUNT LUMINAIRES.
- NEW LUMINAIRES SHALL MATCH EXISTING: LITHONIA D-SERIES DSX2-LED-100C-1000-40K-xxx-MVOLT-RPA-DNAXD-PER.
- NEW POLES SHALL MATCH EXISTING: HAPCO RTA28F8B4-1 (TYP.).

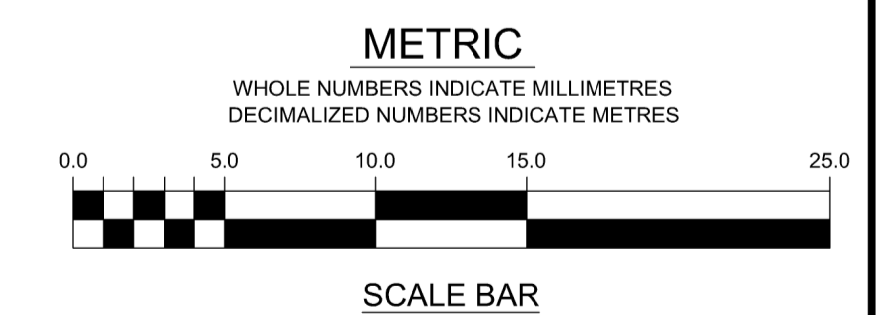
KEY NOTES:

- REMOVE EXISTING POLE MOUNTED LUMINAIRES.
- PROVIDE LUMINAIRE, POLE, CONCRETE FOUNDATION, CONDUIT, AND WIRING.
- EXISTING PANEL PL AND SUB PANEL PL-A. SUB PANEL PL-A IS FED FROM PANEL PL VIA CONTACTOR CONTROLLED BY PHOTOCELL.
- EXISTING COMMUNICATION JUNCTION BOX.
- EXISTING 41mm PVC CONDUIT FOR POWER. MODIFY AND EXTEND CONDUIT TO SUIT NEW POLE.
- EXISTING 41mm PVC CONDUIT FOR FUTURE CCTV CAMERA. MODIFY AND EXTEND CONDUIT TO SUIT NEW POLE.
- NEW 41mm PVC CONDUIT FOR POWER.
- NEW 41mm PVC CONDUIT FOR FUTURE CCTV CAMERAS.
- NEW 41mm PVC CONDUIT STUB FOR FUTURE POWER WIRING.
- NEW 41mm PVC CONDUIT STUB FOR FUTURE CCTV CAMERA WIRING.
- CONNECT CCTV CONDUIT TO EXISTING CCTV JUNCTION BOX IN BASEMENT. PROVIDE PULL CORD, LABEL CONDUIT AS SPARE.
- SPARE 53mm PVC FROM BASEMENT ELECTRICAL ROOM TO GRASSED AREA. CAP BOTH ENDS AND LABEL BASMENT END.

LEGEND



NOTE THE REQUIREMENTS IN THE ELECTRICAL SPECIFICATIONS FOR WIRE SIZING (MIN. #6AWG COPPER FOR LIGHTING CIRCUITS) AND FOR POLE MOUNT OCCUPANCY SENSORS FOR ON/OFF AND DIMMING CONTROL. PROVIDE ADAPTORS FOR THE SENSORS TO MOUNT ON ROUND POLES.



REFER TO DWG C01 FOR GENERAL CONSTRUCTION NOTES

150 WM	WATERMAIN	150 WM	+	SURVEY BAR	235.380	GROUND ELEVATION	235.38	LOCATION APPROVED UNDERGROUND STRUCTURES	C.W.B.M. 52-012..... 233.701m N.E. COR. TAYLOR AVE. & CAMBRIDGE ST., AT REAR OF No. 800 CAMBRIDGE ST. FACING TAYLOR AVE., TBLT. IN S. SIDE OF SQUARE CONC. VENTILATOR, 0.6m E. OF W. EDGE & 0.6m BELOW TOP OF CONC. VENTILATOR FOR UNDERGROUND GARAGE.	 Sison Blackburn Consulting Inc. www.SBCinc.ca	Unit 10 - 5 Scurfield Boulevard Winnipeg, MB, R3Y 1G3 T: (204) 505-0855 / F: (204) 505-0850	ENGINEER'S SEAL	 THE CITY OF WINNIPEG	SHEET 6 OF 6 CITY DRAWING NO. 921-2015-E01 -R1
250 WWS	WASTEWATER	150 WWS	+	SIGN	235.38	DITCH ELEVATION	235.38							
300 LDS	LAND DRAINAGE SEWER	300 LDS	+	UTILITY POLE	235.400	ROAD ELEVATION	235.400	SUPV. U/G STRUCTURES COMMITTEE	DATE	DESIGNED BY DR	CHECKED BY DR	CONSULTANT DRAWING NO. 15127-E01-R1	PAN AM INDOOR POOL PARKING LOT REDEVELOPMENT - STAGE 2 ELECTRICAL PLAN	
	HYDRANT ASSEMBLY		+	UTILITY PEDESTAL		CURB		NOTE:		DRAWN BY JLT	APPROVED BY RC			
	GATE VALVE		+	HYDRO		CONCRETE		LOCATION OF UNDERGROUND STRUCTURES AS SHOWN ARE BASED ON THE BEST INFORMATION AVAILABLE BUT NO GUARANTEE IS GIVEN THAT ALL EXISTING UTILITIES ARE SHOWN OR THAT THE GIVEN LOCATIONS ARE EXACT CONFIRMATION OF EXISTENCE AND EXACT LOCATION OF ALL SERVICES MUST BE OBTAINED FROM THE INDIVIDUAL UTILITIES BEFORE PROCEEDING WITH CONSTRUCTION.		HOR. SCALE: 1:250	RELEASED FOR CONSTRUCTION			
	CURB STOP		+	GAS		ASPHALT				VERT. SCALE:				
	REDUCER		+	MTS		PAVING STONE				DATE: SEPTEMBER, 2015				
	MANHOLE		+	TREE LINE		GRASS								
	CATCH BASIN		+	CULVERT		DWST								
	TESTHOLE		+	SWALE										
	PROBEHOLE		+	DIRECTION OF FLOW										
EXISTING	LEGEND	PROPOSED	EXISTING	LEGEND	PROPOSED	EXISTING	LEGEND	PROPOSED						