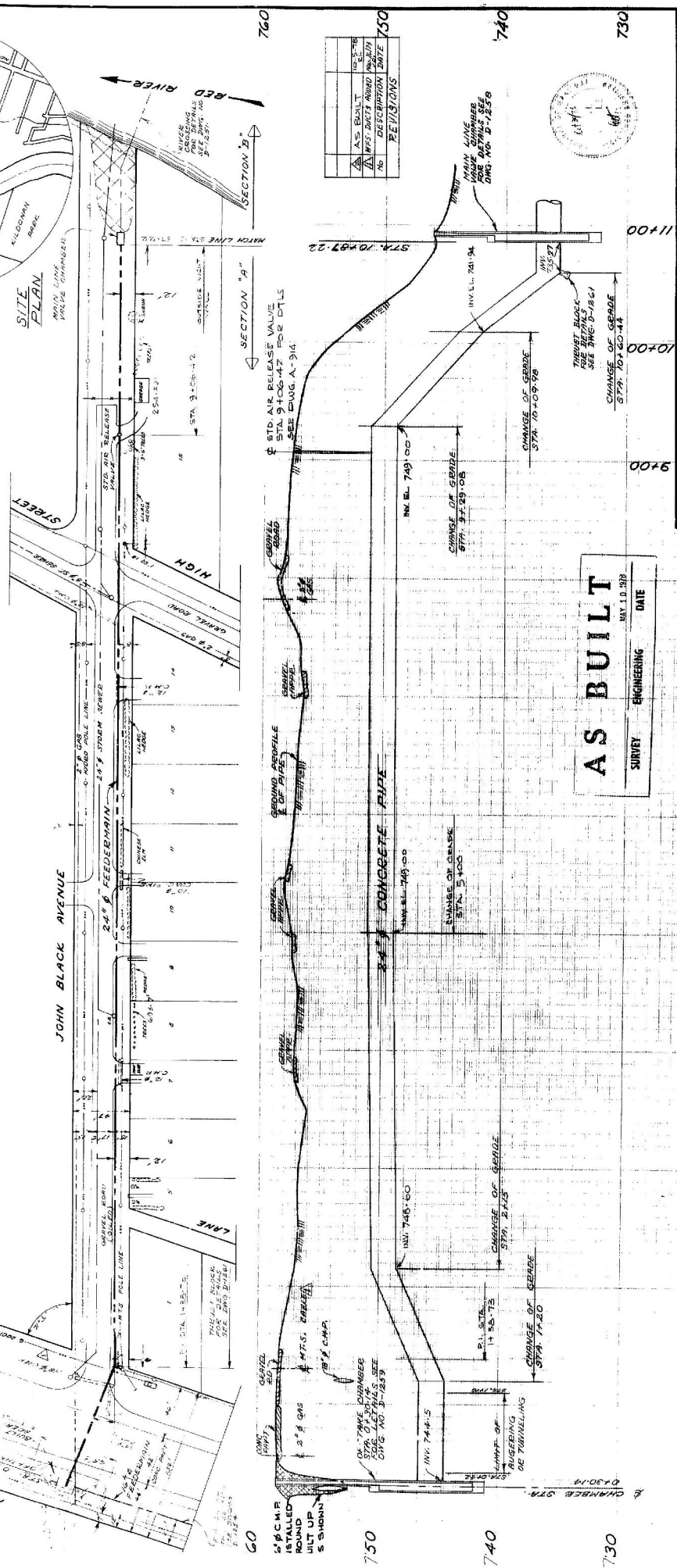
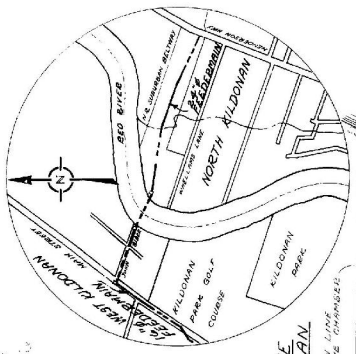


APPENDIX C - Historical Record Drawings Compilation (FOR INFORMATION ONLY)



No.	DESCRIPTION	DATE	REVISIONS
1	AS BUILT	10-2-78	
2	INVESTIGATED	10-2-78	
3	INVESTIGATED	10-2-78	

AS BUILT
 SURVEY ENGINEERING DATE
 MAY 10, 1978

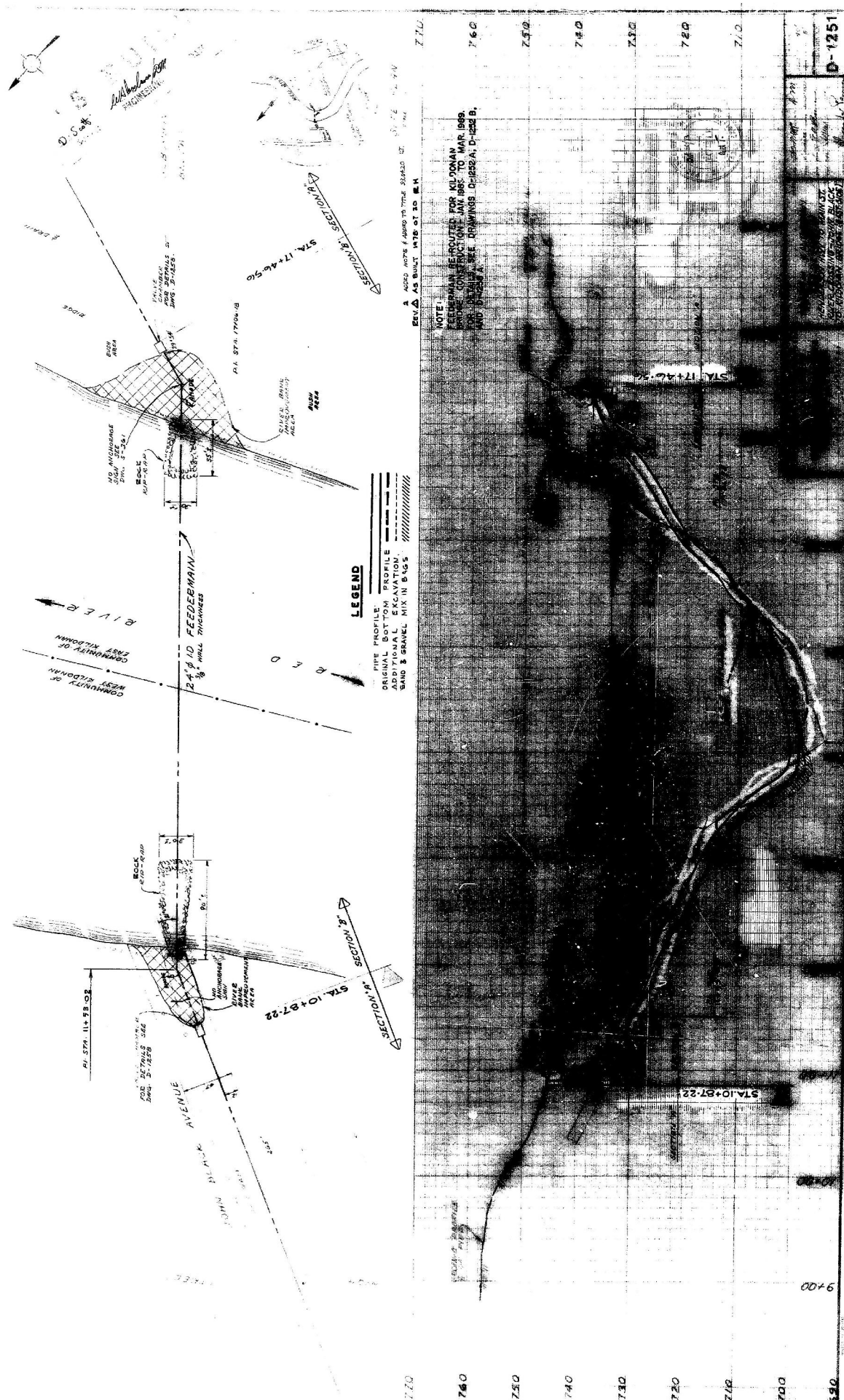
THE CITY OF WINTER
 WATERWORKS & WASTE
 DISPOSAL DIVISION
 A. FINKA - DIRECTOR

APPROVED BY
 NORTH KILDONAH RECORDERS
 MARGARET J. HENNINGSON
 JOHN BLACK AVE.
 MAIN ST. TO RED RIVER
 STA. 750+00 TO 780+00

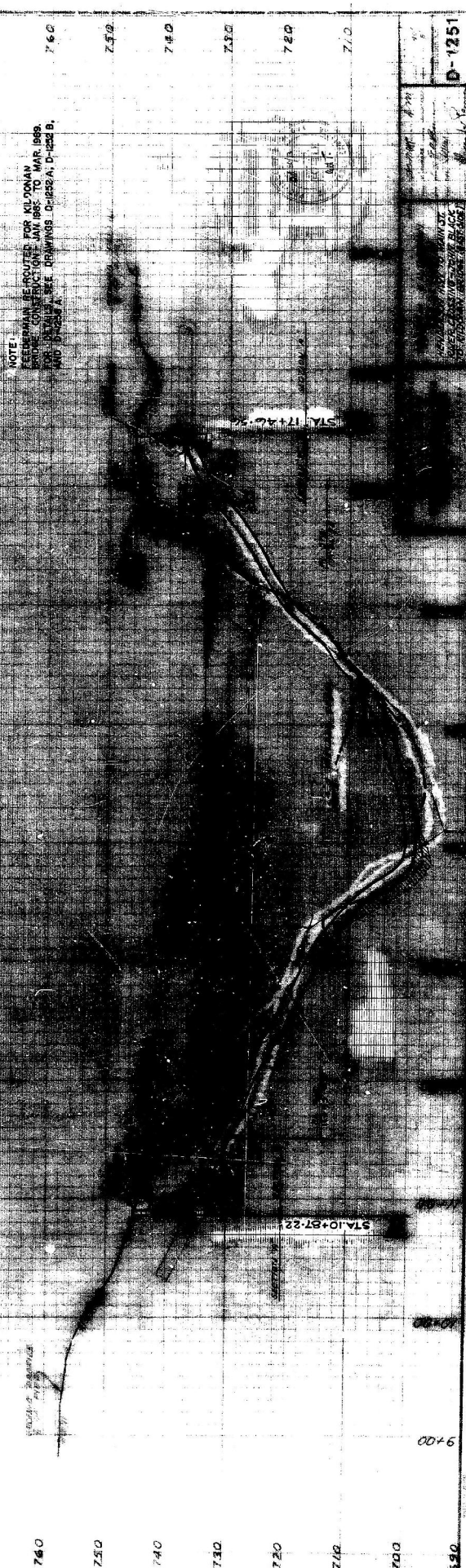
DATE
 MAY 10, 1978
 DRAWING NO.
 D-1250

780 0+00 1+00 2+00 3+00 4+00 5+00 6+00 7+00 8+00 9+00 11+00

750 740 730



770
760
750
740
730
720
710
700
690



9+00
0 20 40 60 80 100 120

D.S. of
Richardson
 ENGINEERS

LEGEND

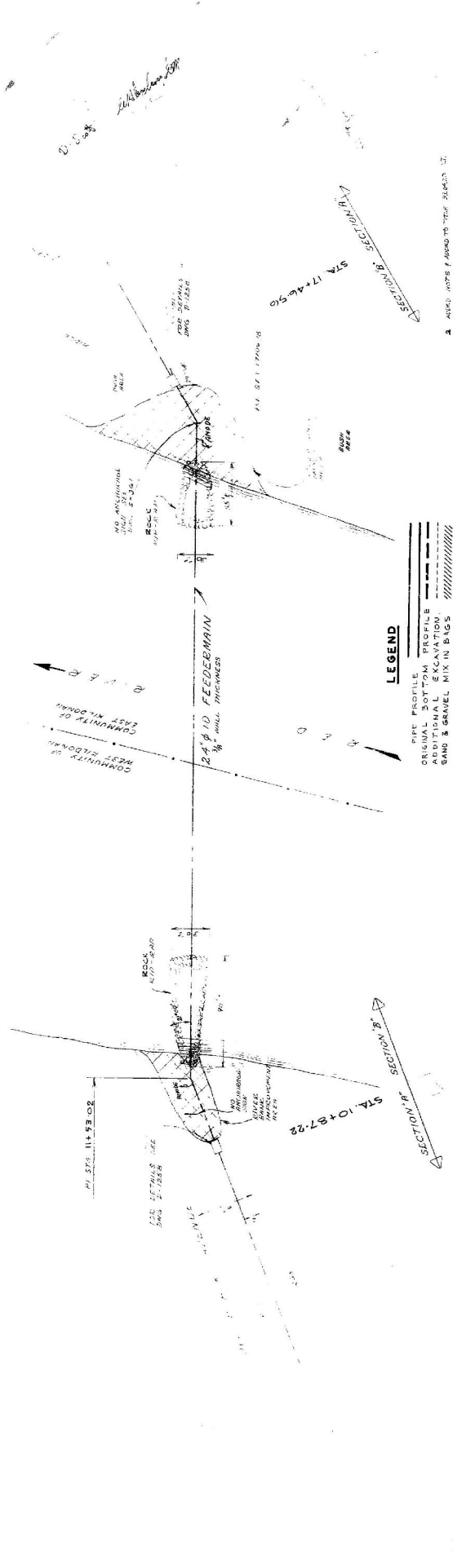
- FIRE PROFILE
- ORIGINAL BOTTOM PROFILE
- - - - - SMALL EXCAVATION
- ||||| SAND & GRAVEL MIX IN BAYS

NOTE
 FEEDERMAN BE ROUTED FOR MI DONAN
 BRIDGE. CONTRACTORS' PLAN 1882 TO MAR 1989.
 FOR DETAILS SEE DRAWINGS D-1882A, D-1882 B,
 AND D-1882 C.

D-1251

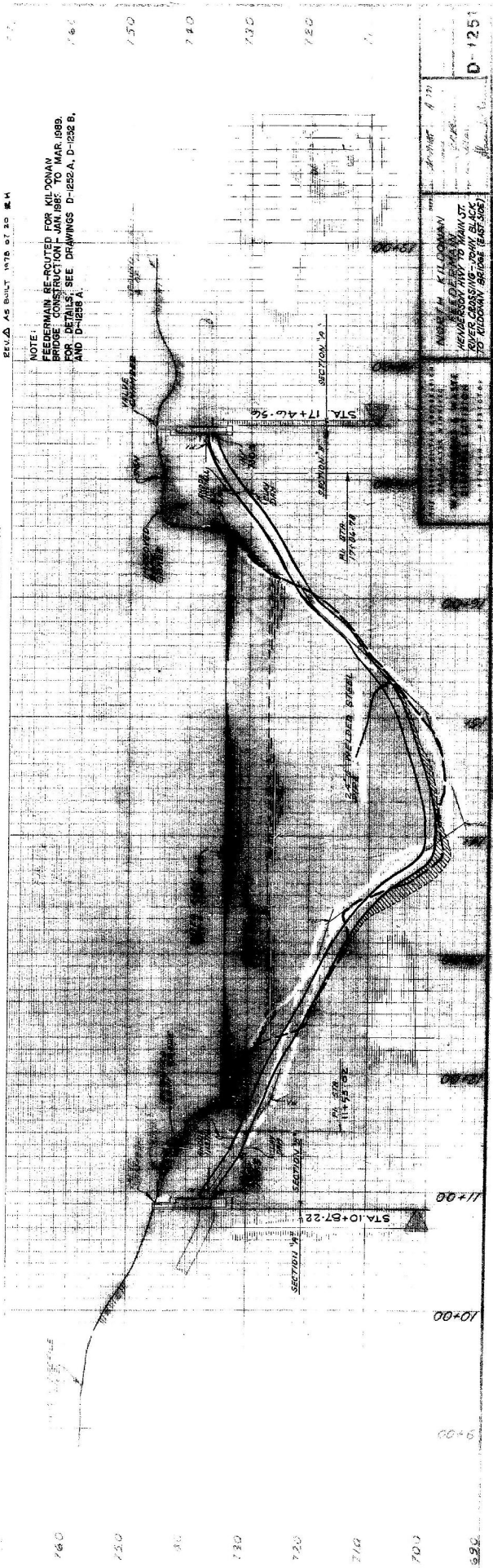
FILE NO. FE 10160

REF. OF DRAWING NO. D-1251
 DETAILS



LEGEND

— FIRE PROFILE
 --- ORIGINAL BOTTOM PROFILE
 - - - EXCAVATION
 ▨ SAND & GRAVEL MIXTURE
 ▩ SAND & GRAVEL MIXTURE



NOTE:
 FEEDERMAN RE-ROUTED FOR KILDONAN
 BRIDGE CONSTRUCTION - JAN 1985 TO MAR 1989.
 FOR DETAILS, SEE DRAWINGS D-1252 A, D-1252 B,
 AND D-1255 A.

REV. A AS BUILT 1978, ST 20 M.H.

DESIGNED BY KILDONAN
 ENGINEERS LTD.
 100, GLENVIEW ROAD,
 KILDONAN, CO. DUBLIN 12.

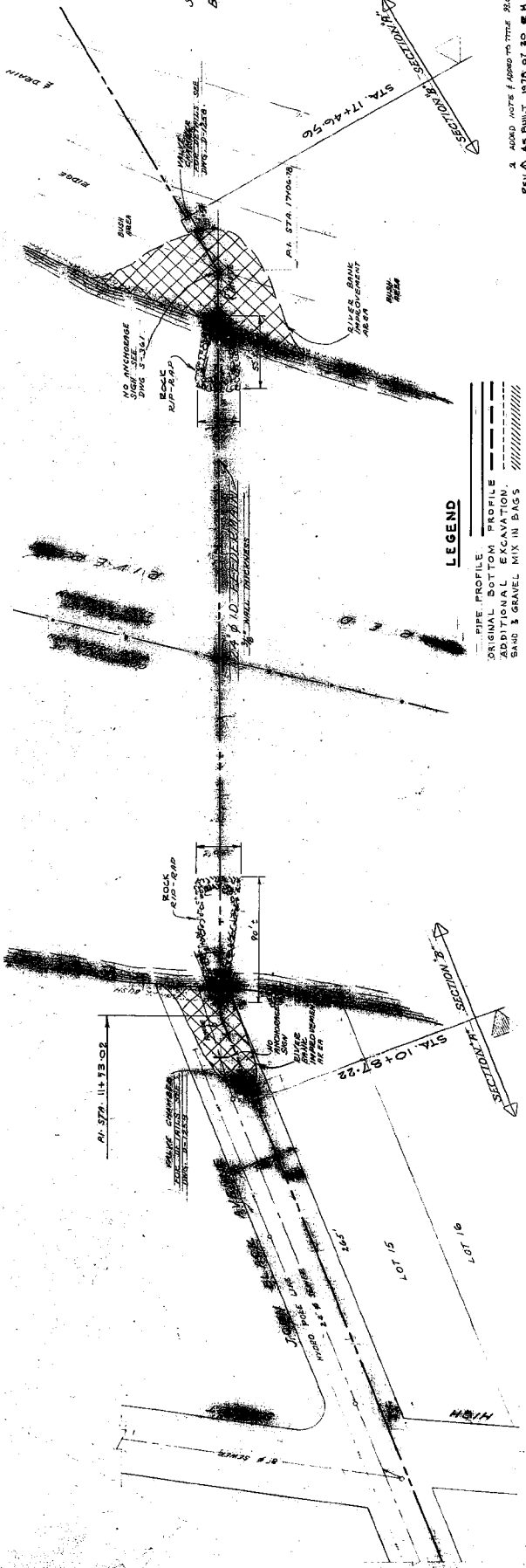
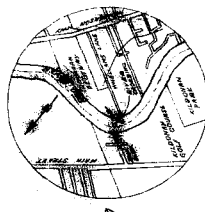
D-1251



DETAILS

REF. OF DRAWING NO. D-1251

AS BUILT
 D. S. ASK SURVEY
 ENGINEERING
 DATE: 1/19/73
 SUBURBAN BELTHWAY



LEGEND
 PIPE PROFILE
 ORIGINAL BOTTOM PROFILE
 ADDITIONAL EXCAVATION
 SAND & GRAVEL MIX IN BAGS

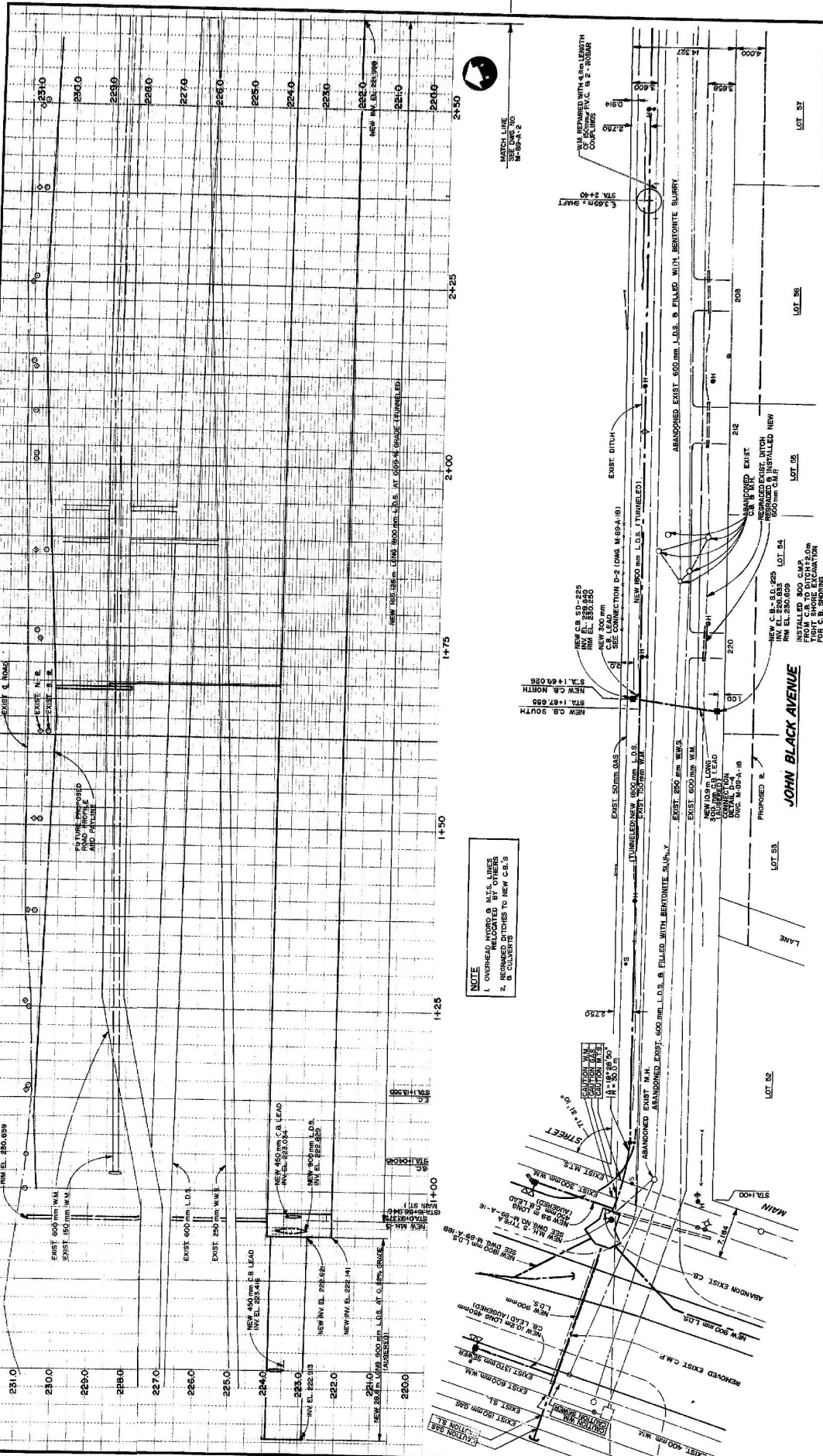
SITE PLAN
 1. ADDED NOTES APPROXIMATE 3/14/73 BY [Signature]
 2. AS BUILT 1/17/73 BY [Signature]

NOTE:
 FEEDERMAIN RE-ROUTED FOR KILDONAN
 BRIDGE CONSTRUCTION - JAN. 1989 TO MAR. 1989.
 FOR DETAILS, SEE DRAWINGS D-1252 A, D-1252 B,
 AND D-1258 A.



WATERWORKS & WASTE DISPOSAL DIVISION
 NORTH KILDONAN
 FEEDERMAIN
 RIVER CROSSING - JOHN BLACK
 TO KILDONAN BRIDGE (SECTION D-1251)

APPROVED BY [Signature]



NOTE

- OVERHEAD HYDRANT & M.I.S. LINES ARE TO BE PLACED ABOVE ALL UNDERGROUND UTILITY LINES.
- REPAIRED DITCHES TO MEET C.S.S. & CULVERTS

RECORD DRAWING

Dillon

JOHN BLACK AVENUE

LOT 97
LOT 98
LOT 99
LOT 100
LOT 101
LOT 102

THE CITY OF WINNIPEG
WORKS AND OPERATIONS DIVISION
STREETS AND TRANSPORTATION DEPARTMENT

KILDONAN CORRIDOR
CONSTRUCTION OF L.D.S. & RIVER OUTFALL
ALONG JOHN BLACK AVENUE
FROM MAIN STREET TO THE RED RIVER
STAGE 1

CONSULTANT DRAWING NO.
M-69-A-1
PROJECT NO.
117177

DILLON
Consulting Engineers, Planners
Environmental Scientists

DESIGNED BY [Signature]
DRAWN BY [Signature]
CHECKED BY [Signature]
APPROVED BY [Signature]

DATE: JUN 98

NO.	REVISIONS	DATE	BY

LOCATION APPROVED

EXISTING AND PROPOSED STRUCTURES

NOTE: FOR ALL PROPOSED STRUCTURES, THE LOCATION OF THE STRUCTURE MUST BE APPROVED BY THE CITY ENGINEER. THE CITY ENGINEER WILL CONSIDER THE LOCATION OF THE STRUCTURE IN RELATION TO THE SURROUNDING LAND USE AND THE CITY ENGINEER'S OFFICE PROCEDURES WITH CONSTRUCTION.

NO.	REVISIONS	DATE	BY

NO.	REVISIONS	DATE	BY

NO.	REVISIONS	DATE	BY

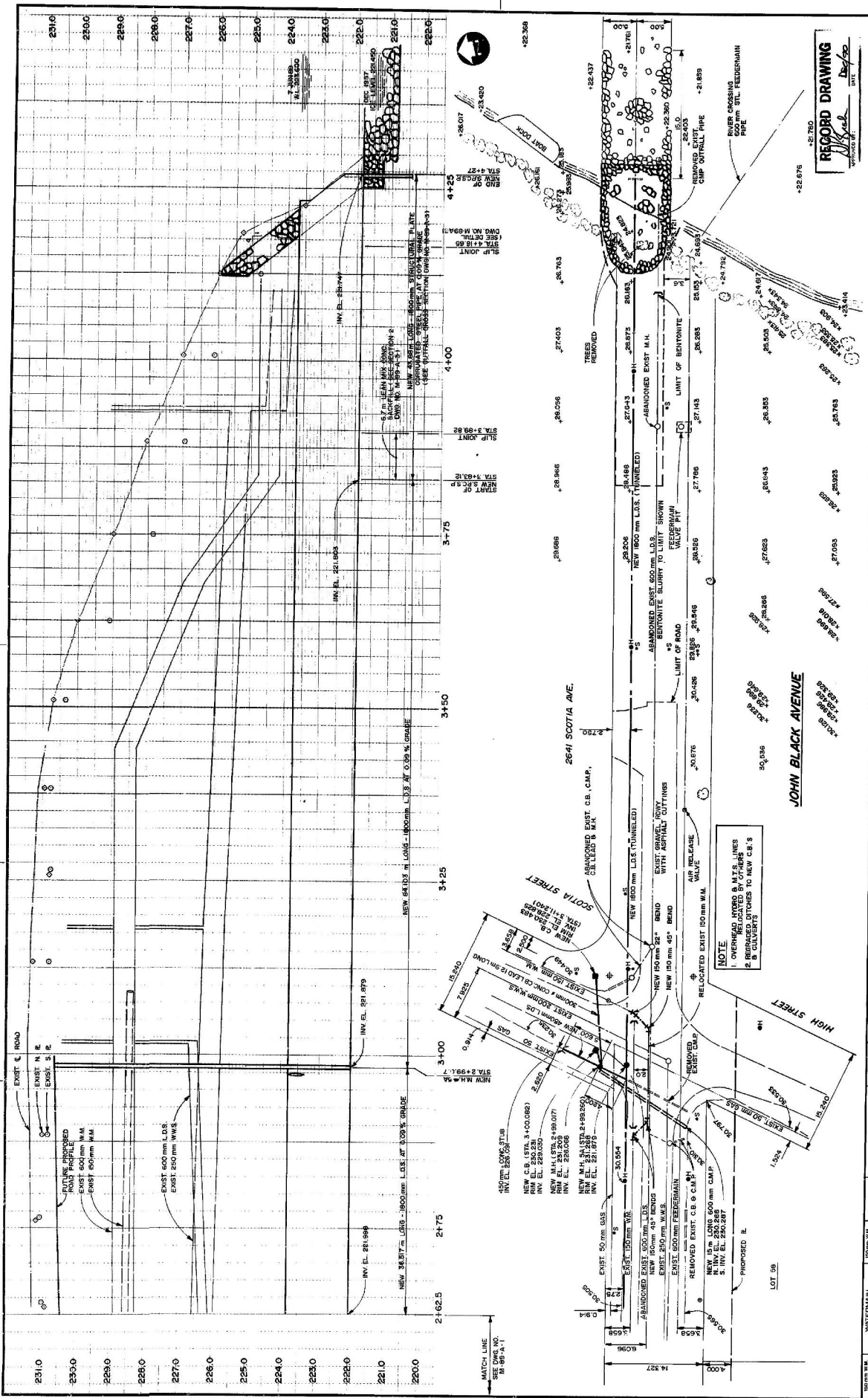
NO.	REVISIONS	DATE	BY

LEGEND - PLAN

- EXISTING WATERMAIN VALVE
- EXISTING HYDRANT
- EXISTING LAND DRAINAGE SEWER
- EXISTING LAND VALVE
- EXISTING MANDOLIN SEWER
- EXISTING PROPERTY LINE
- EXISTING CATCH BASIN
- EXISTING CLUMP INLET
- EXISTING CULVERT
- EXISTING WATERMAIN
- EXISTING HYDRANT
- EXISTING LAND DRAINAGE SEWER
- EXISTING LAND VALVE
- EXISTING MANDOLIN SEWER
- EXISTING PROPERTY LINE
- EXISTING CATCH BASIN
- EXISTING CLUMP INLET
- EXISTING CULVERT

LEGEND - PROFILE

- EXISTING WATERMAIN
- EXISTING HYDRANT
- EXISTING LAND DRAINAGE SEWER
- EXISTING LAND VALVE
- EXISTING MANDOLIN SEWER
- EXISTING PROPERTY LINE
- EXISTING CATCH BASIN
- EXISTING CLUMP INLET
- EXISTING CULVERT
- EXISTING WATERMAIN
- EXISTING HYDRANT
- EXISTING LAND DRAINAGE SEWER
- EXISTING LAND VALVE
- EXISTING MANDOLIN SEWER
- EXISTING PROPERTY LINE
- EXISTING CATCH BASIN
- EXISTING CLUMP INLET
- EXISTING CULVERT



RECORD DRAWING
 DATE: 11/17/2019
 DRAWN BY: [Signature]
 CHECKED BY: [Signature]

THE CITY OF WINNIPEG
 OPERATIONS DIVISION
 STREETS AND TRANSPORTATION DEPARTMENT

KILDONAN CORRIDOR
 CONSTRUCTION OF L.O.S. & RIVER OUTFALL
 ALONG JOHN BLACK AVENUE
 FROM MAIN STREET TO THE RED RIVER
 STAGE I

DILLON
 Consulting Engineers + Planners
 Environmental Scientists

DATE	BY	DESCRIPTION
2019-11-17	[Signature]	ISSUED FOR PERMIT
2019-11-17	[Signature]	ISSUED FOR RECORD

LOCATION APPROVED
 UNDERGROUND STRUCTURES
 COMMITTEE

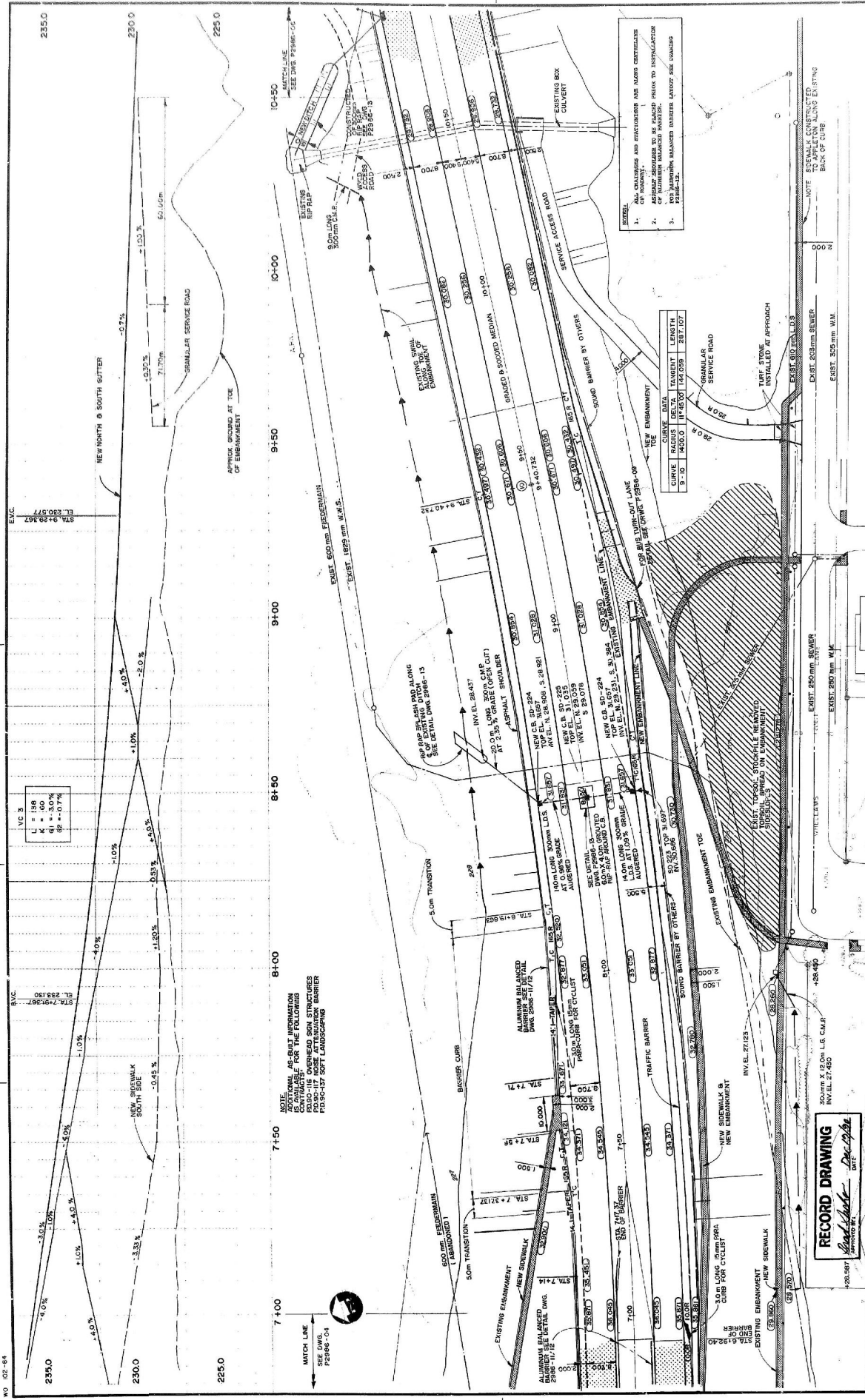
WATERMAIN HYDRANT
 VALVE
 LAND DRAINAGE SEWER
 WASTE WATER SEWER
 & PROFILE

HYDRO
 M.T.S.
 CONCRETE
 PRECAST LINE
 SURVEY LINE

WATERMAIN HYDRANT
 VALVE
 LAND DRAINAGE SEWER
 WASTE WATER SEWER
 MANHOLE
 CATCH BASIN
 JUNCTIONS
 CLVERTS
 GAS

EXISTING	PROPOSED	PLAN	EXISTING	PROPOSED	PROFILE
[Symbol]	[Symbol]	[Symbol]	[Symbol]	[Symbol]	[Symbol]
[Symbol]	[Symbol]	[Symbol]	[Symbol]	[Symbol]	[Symbol]
[Symbol]	[Symbol]	[Symbol]	[Symbol]	[Symbol]	[Symbol]
[Symbol]	[Symbol]	[Symbol]	[Symbol]	[Symbol]	[Symbol]
[Symbol]	[Symbol]	[Symbol]	[Symbol]	[Symbol]	[Symbol]
[Symbol]	[Symbol]	[Symbol]	[Symbol]	[Symbol]	[Symbol]
[Symbol]	[Symbol]	[Symbol]	[Symbol]	[Symbol]	[Symbol]
[Symbol]	[Symbol]	[Symbol]	[Symbol]	[Symbol]	[Symbol]
[Symbol]	[Symbol]	[Symbol]	[Symbol]	[Symbol]	[Symbol]
[Symbol]	[Symbol]	[Symbol]	[Symbol]	[Symbol]	[Symbol]

CITY DRAWING NUMBER: [Blank]
 SHEET: [Blank]
 DATE: 11/17/2019
 PROJECT NO.: M-89-A-2
 DRAWN BY: [Signature]
 CHECKED BY: [Signature]
 DATE: 11/17/2019



THE CITY OF WINNIPEG
WORKS AND OPERATIONS DIVISION

KILDONAN BRIDGE PROJECT

ROADWORKS
STA. 7+00 TO STA. 10+50

PROJECT NO. P-2386-C5
SHEET 5 OF 14

DATE: MARCH 780

DESIGNED BY	CHECKED BY	APPROVED BY	DATE
G.S.	D.P.K.	N.B.U.	
D.W.M.			
D.M.W.			
D.P.K.			

NO.	DESCRIPTION	DATE	BY
1	GENERAL REVISIONS		
2			
3			

LOCATION APPROVED UNDERGROUND STRUCTURES

LAND DRAINAGE SEWER
WASTE WATER SEWER
PROPERTY LINE
& PROFILE

NOTE: SHOW THE EXISTING AND PROPOSED STRUCTURES AND THEIR PROFILES ON THE PLAN AND PROFILE. THE PROFILES SHOULD BE CHECKED AGAINST THE RECORD DRAWINGS AND FIELD SURVEY DATA. THE LOCATION OF ALL STRUCTURES MUST BE CHECKED AGAINST THE RECORD DRAWINGS AND FIELD SURVEY DATA.

RECORD DRAWING

[Signature]
DATE: MARCH 780



NOTE:
 ADDITIONAL AS-BUILT INFORMATION
 CONTRACTORS FOR THE FOLLOWING
 PROJECTS: OVERHEAD SIGN STRUCTURES
 PROBABLY SAFE LANSINGHAM

REVISIONS:

NO.	DATE	DESCRIPTION
1.		ADD CHANGES AND STRUCTURES AND ALSO CORRECTIONS OF BARRETT.
2.		FOR ALUMINUM BARRETT MAINTENANCE TO IMPROVEMENT OF MAINTENANCE BARRETT.
3.		FOR ALUMINUM BARRETT MAINTENANCE TO IMPROVEMENT OF MAINTENANCE BARRETT.

RECORD DRAWING
Handwritten signature and date

SECTION A-A
 SCALE: 1:20 VERT

<p>THE CITY OF WINNIPEG WORKS AND OPERATIONS DIVISION</p>		<p>KILDONAN BRIDGE PROJECT ROADWORKS STA. 10+50 TO STA. 13+50</p>	
<p>DESIGNED BY: [Name]</p>		<p>PROJECT NO.: P2386-08 SHEET 6 OF 14</p>	
<p>APPROVED BY: [Name]</p>		<p>CONTRACT NO.: R-90-B-5</p>	
<p>DATE: MARCH 78</p>		<p>SCALE: 1:20 VERT</p>	
<p>DESIGNED BY: [Name]</p>		<p>APPROVED BY: [Name]</p>	
<p>DATE: [Date]</p>		<p>DATE: [Date]</p>	

LOCATION APPROVED

WATERMAIN	WATERMAIN
SEWER	SEWER
LAND DRAINAGE SEWER	LAND DRAINAGE SEWER
WASTE WATER SEWER	WASTE WATER SEWER
PROPOSED	PROPOSED

LEGEND-PROFILE

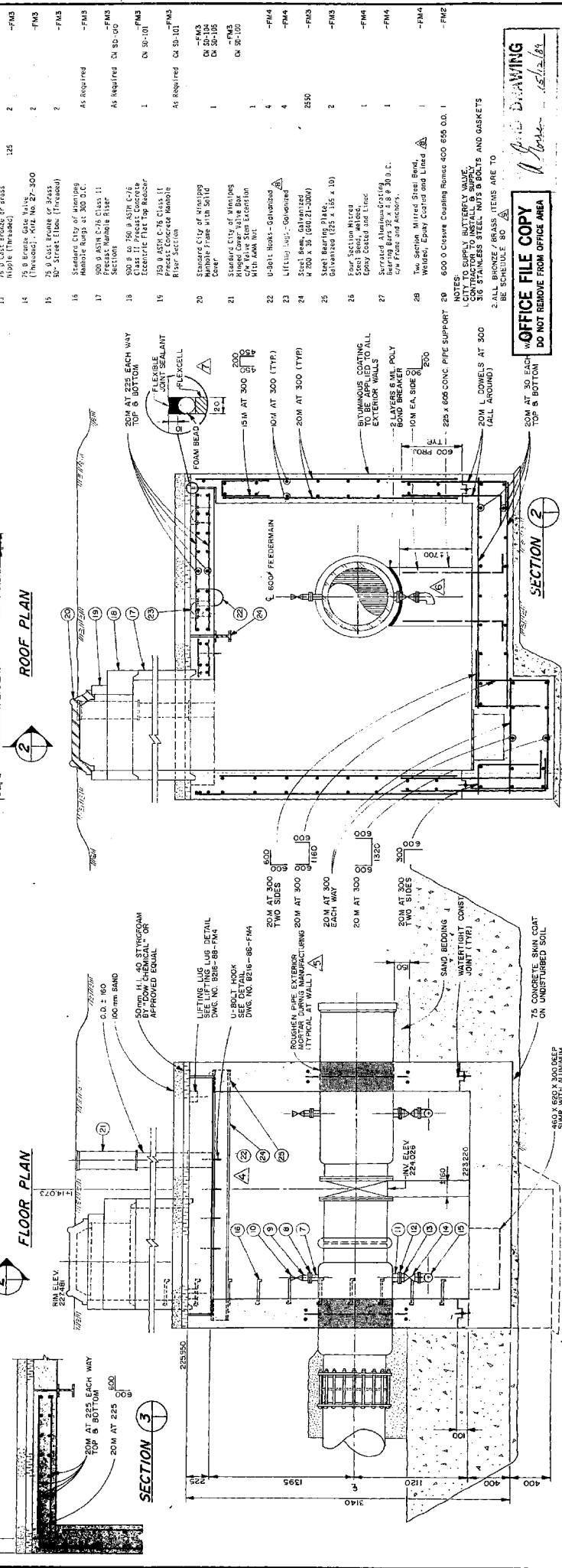
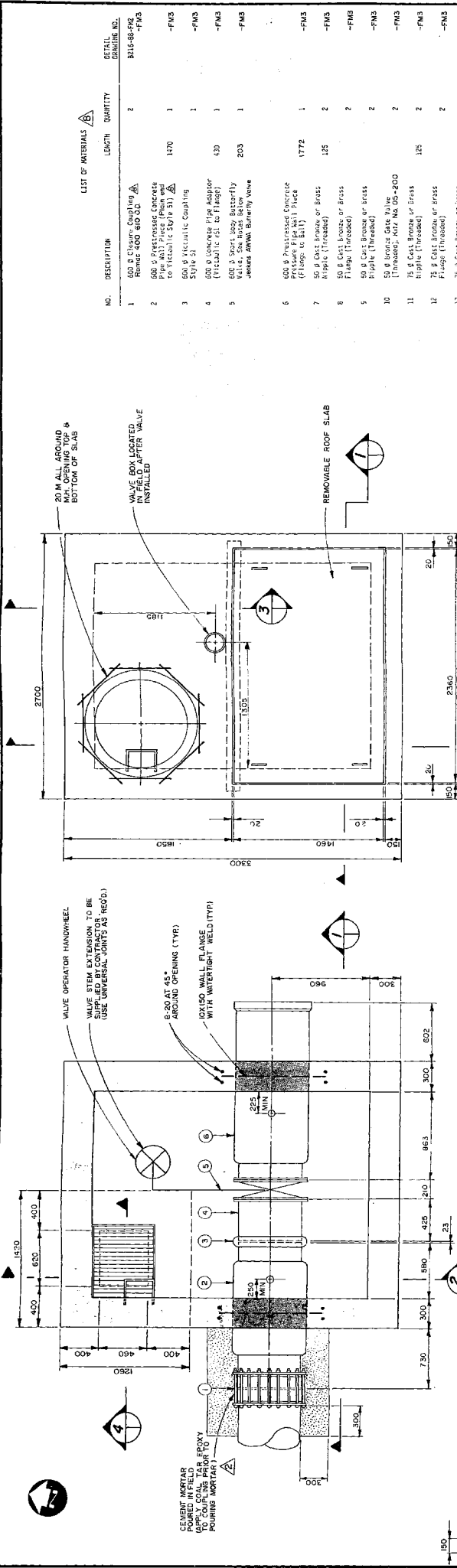
PROPOSED	EXISTING	PROPOSED	EXISTING
WATERMAIN	WATERMAIN	SEWER	SEWER
LAND DRAINAGE SEWER	LAND DRAINAGE SEWER	WASTE WATER SEWER	WASTE WATER SEWER
PROPOSED	EXISTING	PROPOSED	EXISTING

LEGEND-PLAN

PROPOSED	EXISTING	PROPOSED	EXISTING
WATERMAIN	WATERMAIN	SEWER	SEWER
LAND DRAINAGE SEWER	LAND DRAINAGE SEWER	WASTE WATER SEWER	WASTE WATER SEWER
PROPOSED	EXISTING	PROPOSED	EXISTING

LEGEND-PLAN

PROPOSED	EXISTING	PROPOSED	EXISTING
WATERMAIN	WATERMAIN	SEWER	SEWER
LAND DRAINAGE SEWER	LAND DRAINAGE SEWER	WASTE WATER SEWER	WASTE WATER SEWER
PROPOSED	EXISTING	PROPOSED	EXISTING



NO.	DESCRIPTION	LENGTH	QUANTITY	DETAIL NUMBER
1	600 Ø Reinforced Concrete Slab	1772	1	-FM3
2	600 Ø Reinforced Concrete Slab	135	2	-FM3
3	600 Ø Reinforced Concrete Slab	135	2	-FM3
4	600 Ø Reinforced Concrete Slab	203	1	-FM3
5	600 Ø Reinforced Concrete Slab	203	1	-FM3
6	600 Ø Reinforced Concrete Slab	1772	1	-FM3
7	600 Ø Reinforced Concrete Slab	135	2	-FM3
8	600 Ø Reinforced Concrete Slab	135	2	-FM3
9	600 Ø Reinforced Concrete Slab	203	1	-FM3
10	600 Ø Reinforced Concrete Slab	203	1	-FM3
11	600 Ø Reinforced Concrete Slab	1772	1	-FM3
12	600 Ø Reinforced Concrete Slab	135	2	-FM3
13	600 Ø Reinforced Concrete Slab	135	2	-FM3
14	600 Ø Reinforced Concrete Slab	203	1	-FM3
15	600 Ø Reinforced Concrete Slab	203	1	-FM3
16	600 Ø Reinforced Concrete Slab	1772	1	-FM3
17	600 Ø Reinforced Concrete Slab	135	2	-FM3
18	600 Ø Reinforced Concrete Slab	135	2	-FM3
19	600 Ø Reinforced Concrete Slab	203	1	-FM3
20	600 Ø Reinforced Concrete Slab	203	1	-FM3
21	600 Ø Reinforced Concrete Slab	1772	1	-FM3
22	600 Ø Reinforced Concrete Slab	135	2	-FM3
23	600 Ø Reinforced Concrete Slab	135	2	-FM3
24	600 Ø Reinforced Concrete Slab	203	1	-FM3
25	600 Ø Reinforced Concrete Slab	203	1	-FM3
26	600 Ø Reinforced Concrete Slab	1772	1	-FM3
27	600 Ø Reinforced Concrete Slab	135	2	-FM3
28	600 Ø Reinforced Concrete Slab	135	2	-FM3
29	600 Ø Reinforced Concrete Slab	203	1	-FM3
30	600 Ø Reinforced Concrete Slab	203	1	-FM3

THE CITY OF WINNIPEG
WORKS AND OPERATIONS DIVISION
STREETS AND TRANSPORTATION DEPARTMENT
KILDONAN CORRIDOR
N.K. FEEDERMAIN RELOCATION
VALVE PIT - STA. 1+14.073
CONCRETE AND REINFORCING

ENGINEER'S SEAL
 25/16/86
 CONSULTANT (DRAWING NO.)
 M-88-H-2

DATE: JULY 1988
 SCALE: 1/20
 DRAWN BY: D.M.K.
 CHECKED BY: A.G.
 APPROVED BY: P.D.K.

DILLON
 Consulting Engineers & Architects
 1000 BROADWAY
 WINNIPEG, MANITOBA R2S 0S9

LOCATION APPROVED UNDERGROUND STRUCTURES
 DATE: 07/18/86
 BY: [Signature]

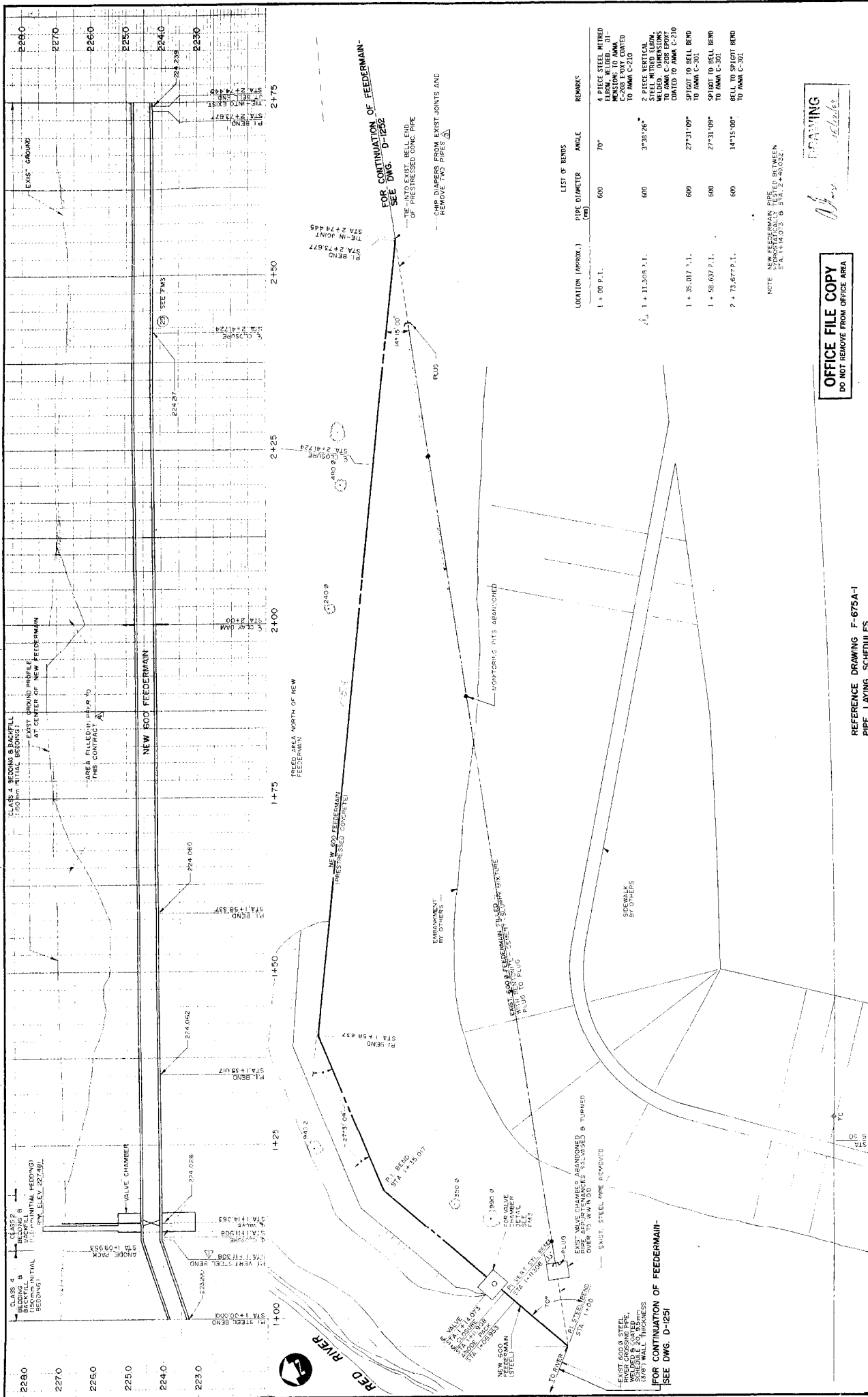
NOTE:
 1. CONCRETE SHALL BE TYPE 60 SULPHATE RESISTANT
 2. REINFORCING STEEL SHALL CONFORM TO C.S.A. Q30.12-M, GRADE 400.
 3. CONCRETE COVER ON REINFORCING 50 mm

BONDING JUMPERS INSTALLED ON CLOSURE COUPLING-DETAIL

OFFICE FILE COPY
 DO NOT REMOVE FROM OFFICE AREA

DATE: 15/12/89

CONCRETE AND REINFORCING



EXISTING	PROPOSED	EXISTING	PROPOSED	EXISTING	PROPOSED	EXISTING	PROPOSED	EXISTING	PROPOSED
WATERMAIN	WATERMAIN	WATERMAIN	WATERMAIN	WATERMAIN	WATERMAIN	WATERMAIN	WATERMAIN	WATERMAIN	WATERMAIN
HYDRANT	HYDRANT	HYDRANT	HYDRANT	HYDRANT	HYDRANT	HYDRANT	HYDRANT	HYDRANT	HYDRANT
VALVE	VALVE	VALVE	VALVE	VALVE	VALVE	VALVE	VALVE	VALVE	VALVE
LAND DRAINAGE SEWER	LAND DRAINAGE SEWER	LAND DRAINAGE SEWER	LAND DRAINAGE SEWER	LAND DRAINAGE SEWER	LAND DRAINAGE SEWER	LAND DRAINAGE SEWER	LAND DRAINAGE SEWER	LAND DRAINAGE SEWER	LAND DRAINAGE SEWER
TRASH	TRASH	TRASH	TRASH	TRASH	TRASH	TRASH	TRASH	TRASH	TRASH
SEWER	SEWER	SEWER	SEWER	SEWER	SEWER	SEWER	SEWER	SEWER	SEWER
CATCH BASIN	CATCH BASIN	CATCH BASIN	CATCH BASIN	CATCH BASIN	CATCH BASIN	CATCH BASIN	CATCH BASIN	CATCH BASIN	CATCH BASIN
W/50' DIAMETER	W/50' DIAMETER	W/50' DIAMETER	W/50' DIAMETER	W/50' DIAMETER	W/50' DIAMETER	W/50' DIAMETER	W/50' DIAMETER	W/50' DIAMETER	W/50' DIAMETER
W/60' DIAMETER	W/60' DIAMETER	W/60' DIAMETER	W/60' DIAMETER	W/60' DIAMETER	W/60' DIAMETER	W/60' DIAMETER	W/60' DIAMETER	W/60' DIAMETER	W/60' DIAMETER
W/84' DIAMETER	W/84' DIAMETER	W/84' DIAMETER	W/84' DIAMETER	W/84' DIAMETER	W/84' DIAMETER	W/84' DIAMETER	W/84' DIAMETER	W/84' DIAMETER	W/84' DIAMETER
W/108' DIAMETER	W/108' DIAMETER	W/108' DIAMETER	W/108' DIAMETER	W/108' DIAMETER	W/108' DIAMETER	W/108' DIAMETER	W/108' DIAMETER	W/108' DIAMETER	W/108' DIAMETER
W/144' DIAMETER	W/144' DIAMETER	W/144' DIAMETER	W/144' DIAMETER	W/144' DIAMETER	W/144' DIAMETER	W/144' DIAMETER	W/144' DIAMETER	W/144' DIAMETER	W/144' DIAMETER
W/180' DIAMETER	W/180' DIAMETER	W/180' DIAMETER	W/180' DIAMETER	W/180' DIAMETER	W/180' DIAMETER	W/180' DIAMETER	W/180' DIAMETER	W/180' DIAMETER	W/180' DIAMETER
W/216' DIAMETER	W/216' DIAMETER	W/216' DIAMETER	W/216' DIAMETER	W/216' DIAMETER	W/216' DIAMETER	W/216' DIAMETER	W/216' DIAMETER	W/216' DIAMETER	W/216' DIAMETER
W/270' DIAMETER	W/270' DIAMETER	W/270' DIAMETER	W/270' DIAMETER	W/270' DIAMETER	W/270' DIAMETER	W/270' DIAMETER	W/270' DIAMETER	W/270' DIAMETER	W/270' DIAMETER
W/324' DIAMETER	W/324' DIAMETER	W/324' DIAMETER	W/324' DIAMETER	W/324' DIAMETER	W/324' DIAMETER	W/324' DIAMETER	W/324' DIAMETER	W/324' DIAMETER	W/324' DIAMETER
W/360' DIAMETER	W/360' DIAMETER	W/360' DIAMETER	W/360' DIAMETER	W/360' DIAMETER	W/360' DIAMETER	W/360' DIAMETER	W/360' DIAMETER	W/360' DIAMETER	W/360' DIAMETER
W/432' DIAMETER	W/432' DIAMETER	W/432' DIAMETER	W/432' DIAMETER	W/432' DIAMETER	W/432' DIAMETER	W/432' DIAMETER	W/432' DIAMETER	W/432' DIAMETER	W/432' DIAMETER
W/504' DIAMETER	W/504' DIAMETER	W/504' DIAMETER	W/504' DIAMETER	W/504' DIAMETER	W/504' DIAMETER	W/504' DIAMETER	W/504' DIAMETER	W/504' DIAMETER	W/504' DIAMETER
W/576' DIAMETER	W/576' DIAMETER	W/576' DIAMETER	W/576' DIAMETER	W/576' DIAMETER	W/576' DIAMETER	W/576' DIAMETER	W/576' DIAMETER	W/576' DIAMETER	W/576' DIAMETER
W/648' DIAMETER	W/648' DIAMETER	W/648' DIAMETER	W/648' DIAMETER	W/648' DIAMETER	W/648' DIAMETER	W/648' DIAMETER	W/648' DIAMETER	W/648' DIAMETER	W/648' DIAMETER
W/720' DIAMETER	W/720' DIAMETER	W/720' DIAMETER	W/720' DIAMETER	W/720' DIAMETER	W/720' DIAMETER	W/720' DIAMETER	W/720' DIAMETER	W/720' DIAMETER	W/720' DIAMETER

WATERMAIN	HYDRANT	VALVE	LAND DRAINAGE SEWER	TRASH	SEWER	CATCH BASIN	W/50' DIAMETER	W/60' DIAMETER	W/84' DIAMETER	W/108' DIAMETER	W/144' DIAMETER	W/180' DIAMETER	W/216' DIAMETER	W/270' DIAMETER	W/324' DIAMETER	W/360' DIAMETER	W/432' DIAMETER	W/504' DIAMETER	W/576' DIAMETER	W/648' DIAMETER	W/720' DIAMETER
PROPOSED	EXISTING	EXISTING	PROPOSED	EXISTING	EXISTING	EXISTING	EXISTING	EXISTING	EXISTING	EXISTING	EXISTING	EXISTING	EXISTING	EXISTING	EXISTING	EXISTING	EXISTING	EXISTING	EXISTING	EXISTING	EXISTING

LEGEND-PLAN	LEGEND-PLAN	LEGEND-PROFILE	LEGEND-PROFILE
PROPOSED	EXISTING	PROPOSED	EXISTING

LEGEND-PLAN	LEGEND-PROFILE
PROPOSED	EXISTING

LEGEND-PROFILE	LEGEND-PROFILE
PROPOSED	EXISTING

LEGEND-PLAN	LEGEND-PROFILE
PROPOSED	EXISTING

LEGEND-PLAN	LEGEND-PROFILE
PROPOSED	EXISTING

LEGEND-PROFILE	LEGEND-PROFILE
PROPOSED	EXISTING

LEGEND-PLAN	LEGEND-PROFILE
PROPOSED	EXISTING

OFFICE FILE COPY
DO NOT REMOVE FROM OFFICE AREA

REFERENCE DRAWING F-675A-1
PIPE LAYING SCHEDULES

DATE: 25/1/04	SCALE: 1" = 20'
DESIGNED BY: [Signature]	DRAWN BY: [Signature]
CHECKED BY: [Signature]	APPROVED BY: [Signature]

DILLON
Consulting Engineers
Environmental Scientists

ISSUED	DATE	BY	REVISION
1			
2			
3			
4			
5			

THE CITY OF WINNIPEG
WORKS AND OPERATIONS DIVISION
STREETS AND TRANSPORTATION DEPARTMENT

KILDENORM CORRIDOR

M. K. FEEDERMAN RELOCATION
STA. 1+00 TO STA. 2+74.445
PLAN AND PROFILE

B216-89-FM2
SHEET 2 OF 4

M-88-H-1

D-1252 A