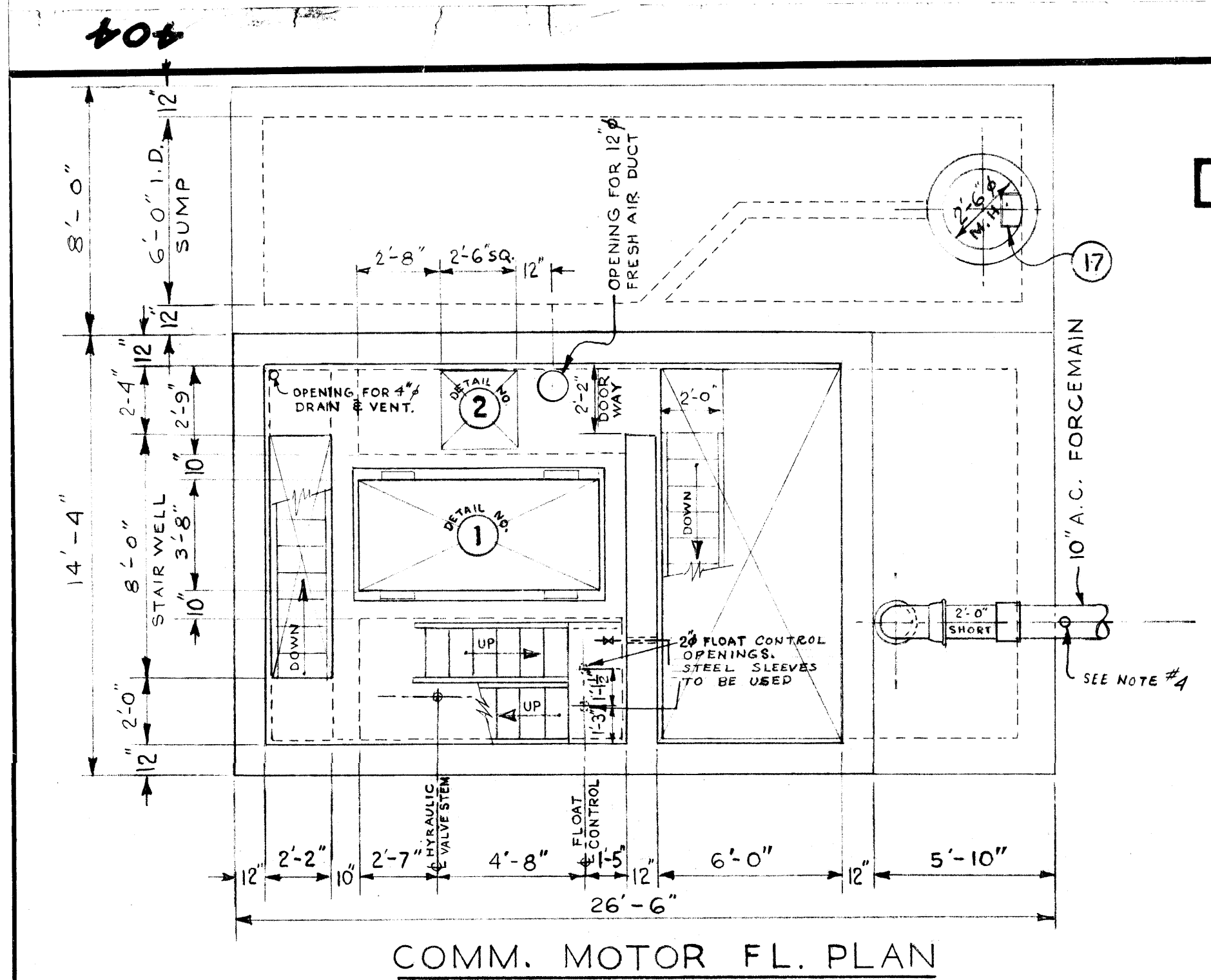


file # SP 10095

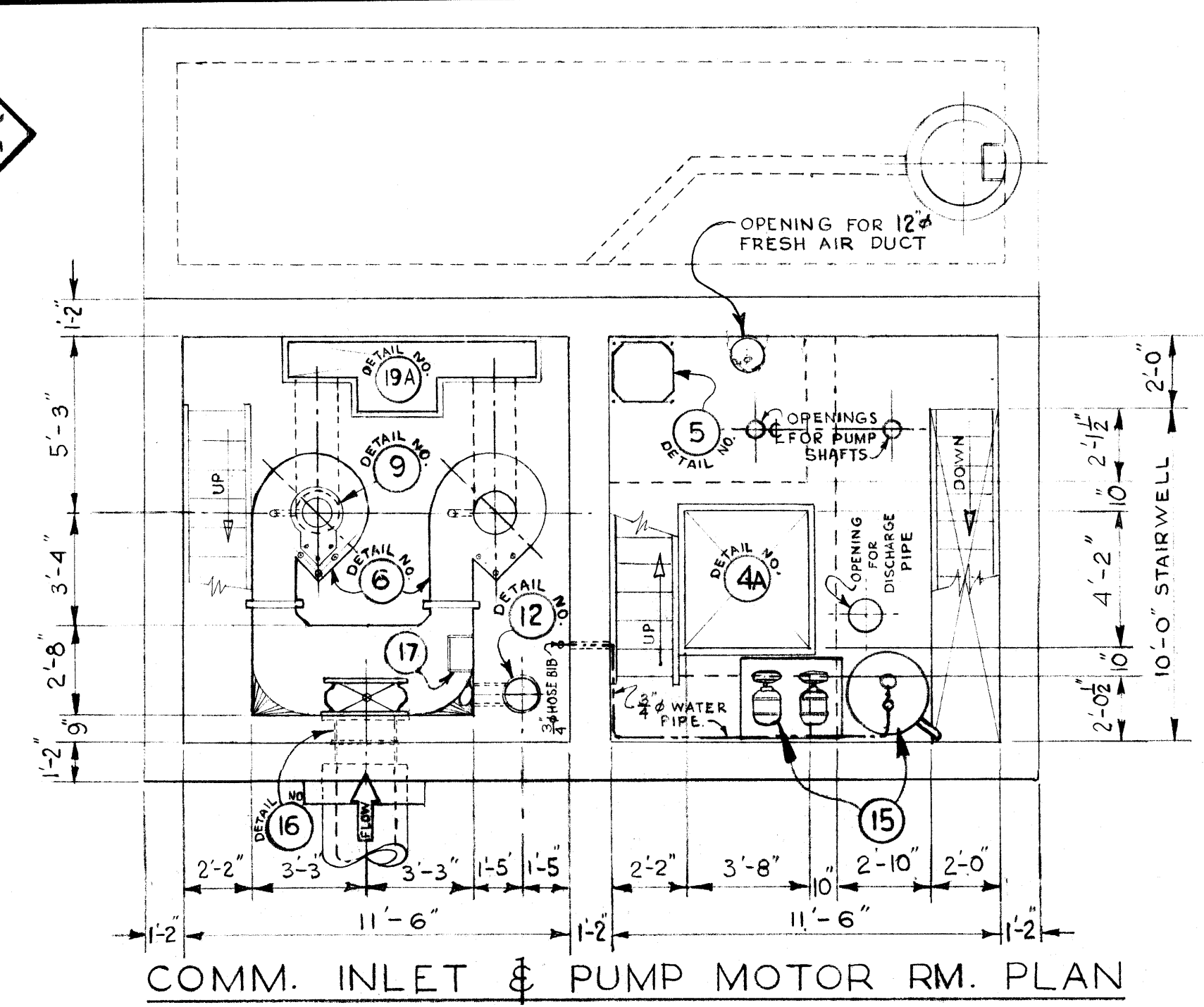
404

REF. or DRAWING No.

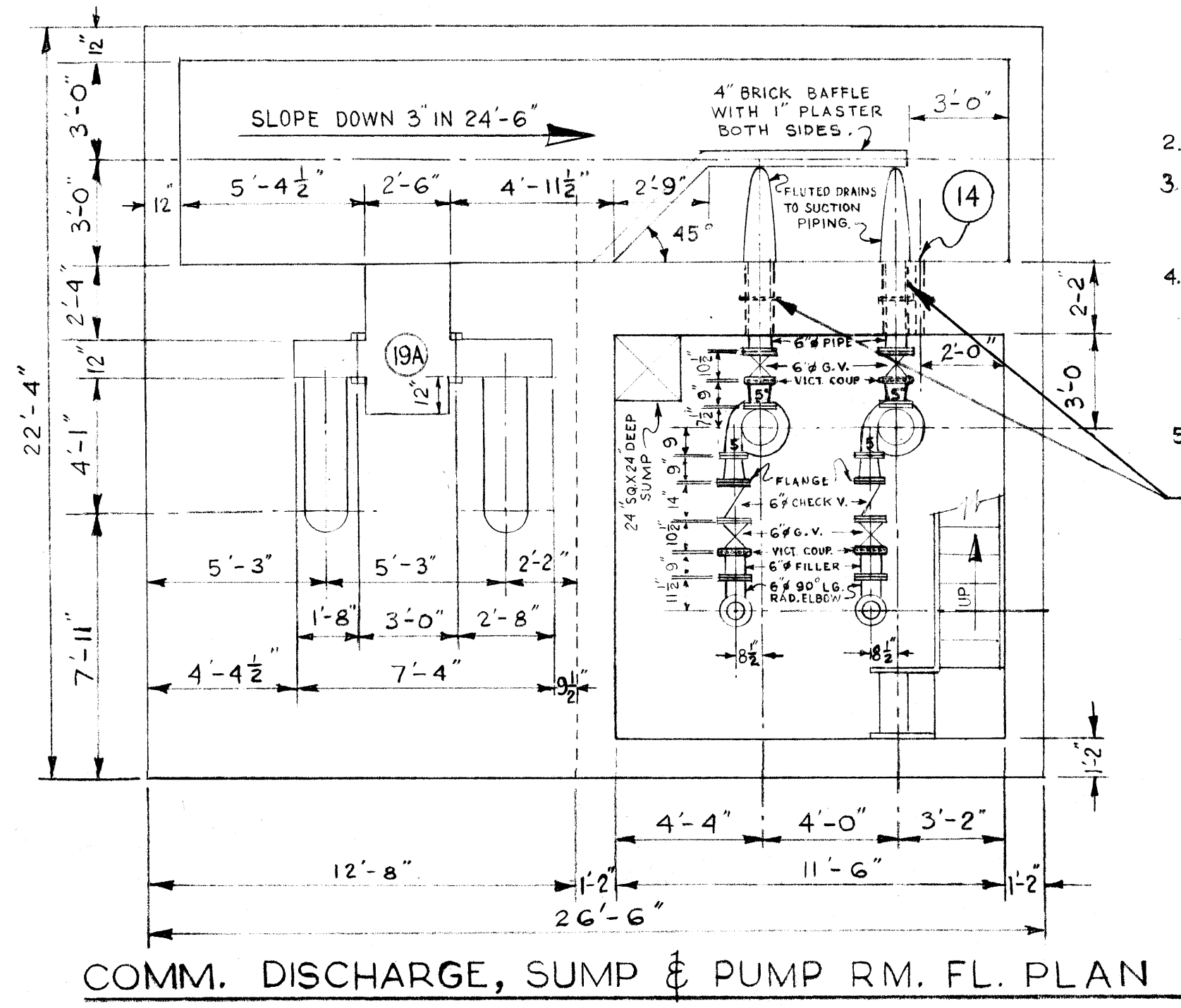
DETAILS



COMM. MOTOR FL. PLAN

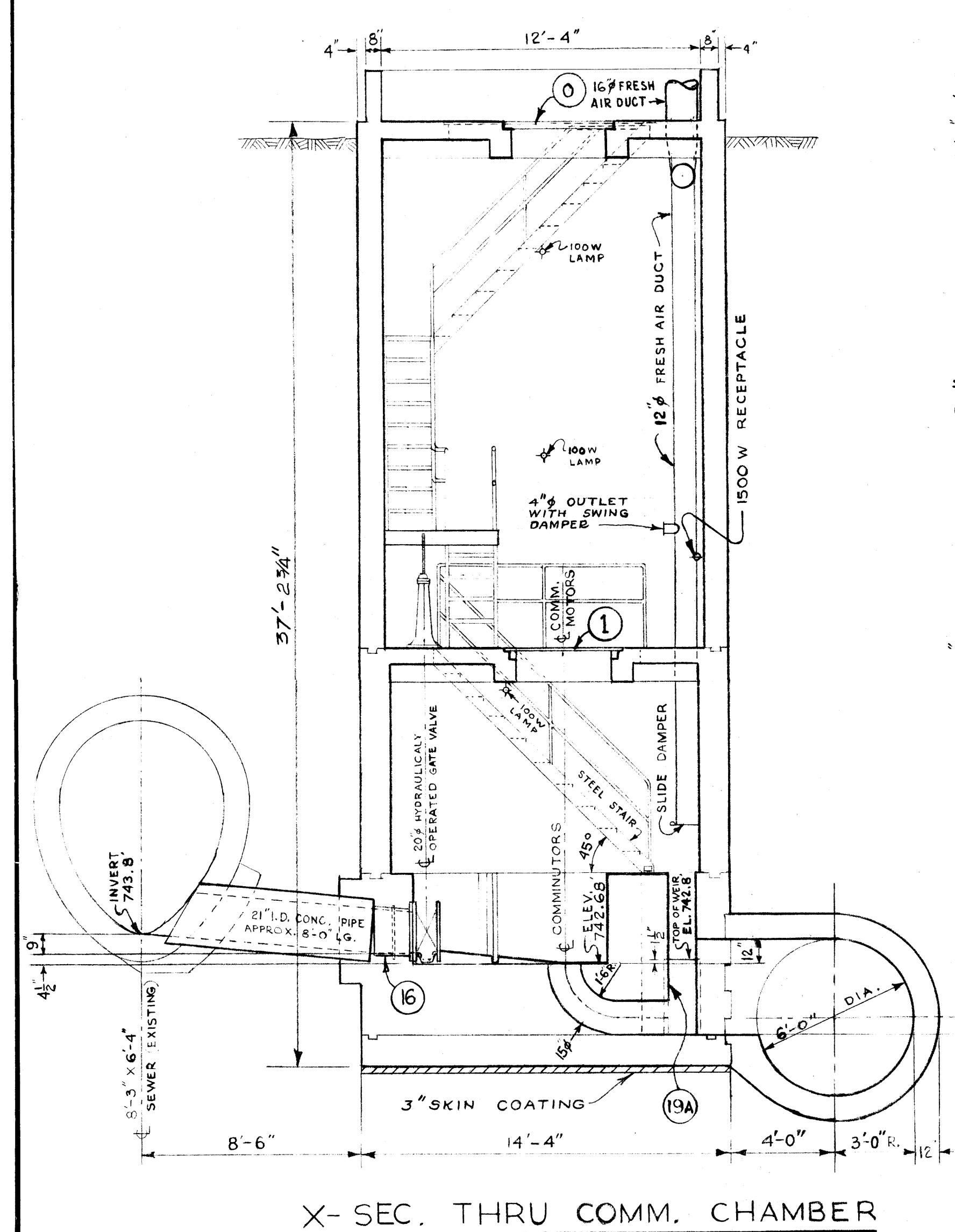


COMM. INLET & PUMP MOTOR RM. PLAN

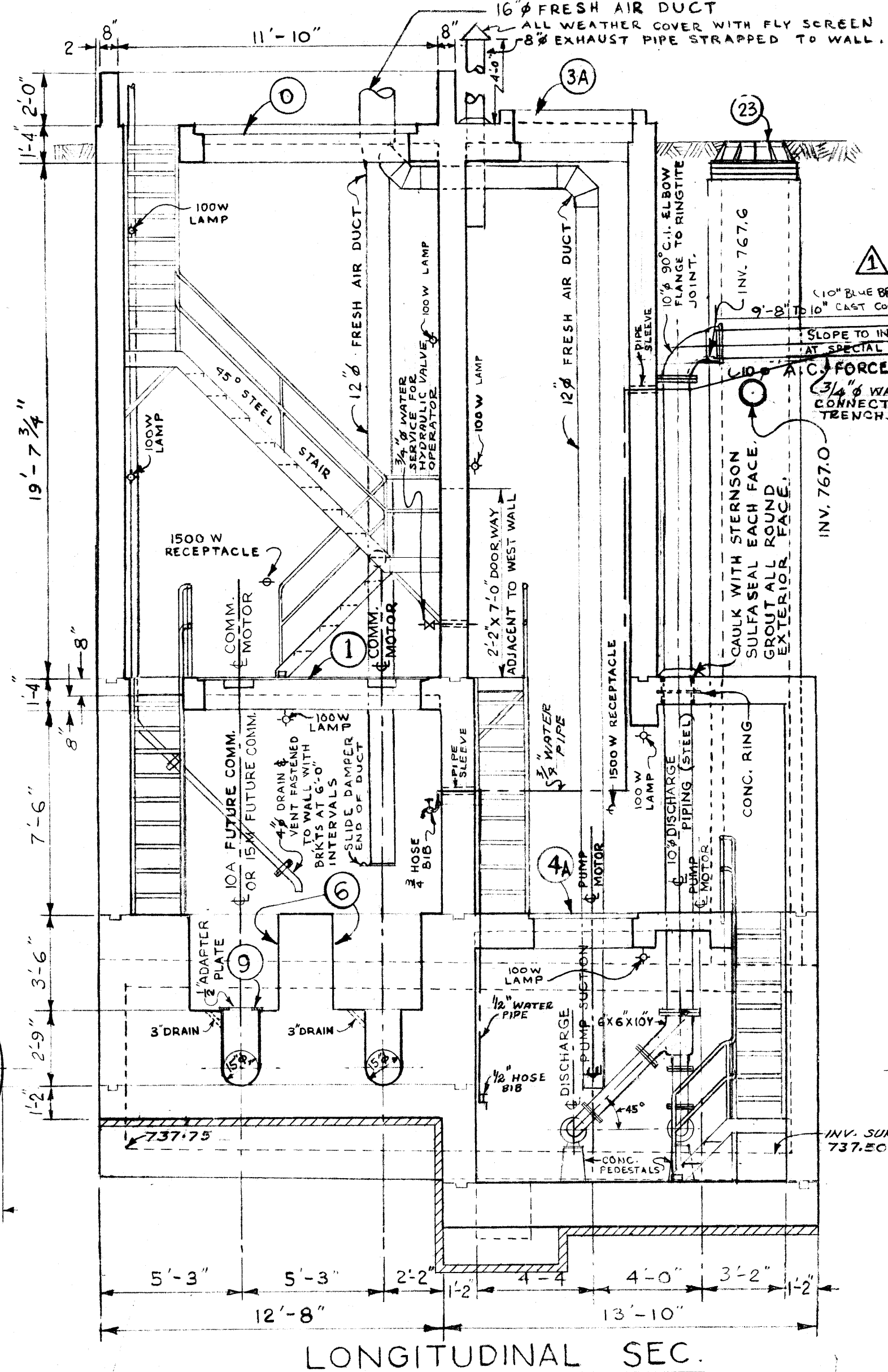


COMM. DISCHARGE, SUMP & PUMP RM. FL. PLAN

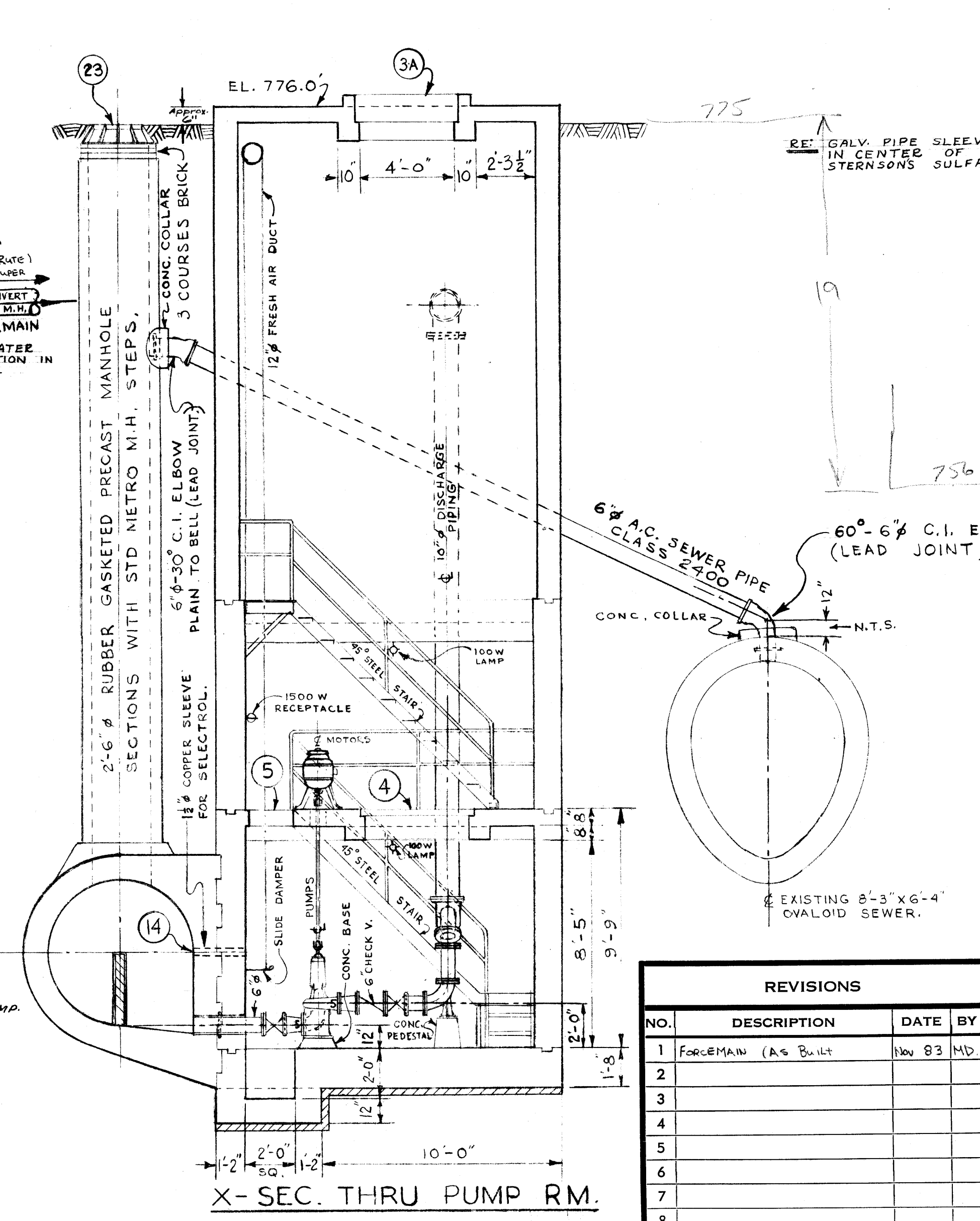
- 2- HOT GALV. ALL MISC METAL WORK.
- 3- A SHORT LENGTH OF PIPE (4' OR LESS), SHALL BE INSTALLED ADJACENT TO ALL C.I. PIPE OR RIGID FITTINGS.
- 4- CONTRACTOR TO SUPPLY SERVICE CLAMP WITH 1" OUTLET, 1/2" GALV. STEEL NIPPLE, 1/2" LONG, ONE RIGHT ANGLE, BRASS GLOBE & ANGLE VALVE, (SCREWED FITTINGS). VALVE TO TURN LEFT TO OPEN. SUPPLY SUITABLE EXTENSION STEM FOR OPERATING VALVE.
- 5- ALL VICTAULIC COUPLINGS TO BE STYLE #44.
- 6- PIPE SLEEVES WITH CONC. RING, CAULKED WITH OAKUM IN CENTRE OF SLEEVE & FINISHED WITH STERNSON'S SULFASAL OR EQUAL AT EA. FACE.
- 6- SUMP PUMP TO DISCHARGE INTO COMM. CHAMBER. (DISCHARGE TO PASS TROUGH WALL AT COMM. MOTOR FL. LEVEL.)



X- SEC. THRU COMM. CHAMBER



LONGITUDINAL SEC.



X- SEC. THRU PUMP RM.

AS BUILT MAR. 1971 V.D.



REVISIONS				THE METROPOLITAN CORPORATION OF GREATER WINNIPEG WATERWORKS & WASTE DISPOSAL DIVISION SEWAGE DISPOSAL BRANCH	
NO.	DESCRIPTION	DATE	BY		
1	FORCEMAIN (AS BUILT)	NOV 83	MD		
2					
3					
4					
5					
6					
7					
8					

APPROVED BY <i>[Signature]</i> DATE	DESIGNED BY <i>[Signature]</i> DATE	CHECKED BY <i>[Signature]</i> DATE	DRAWING NO. <b>404</b>
CHIEF ENGINEER	SCALE	MAY 1963	

Micro-Filmed 1965

MICROFILMED NOV 1983 MICROFILMED JANUARY 1972