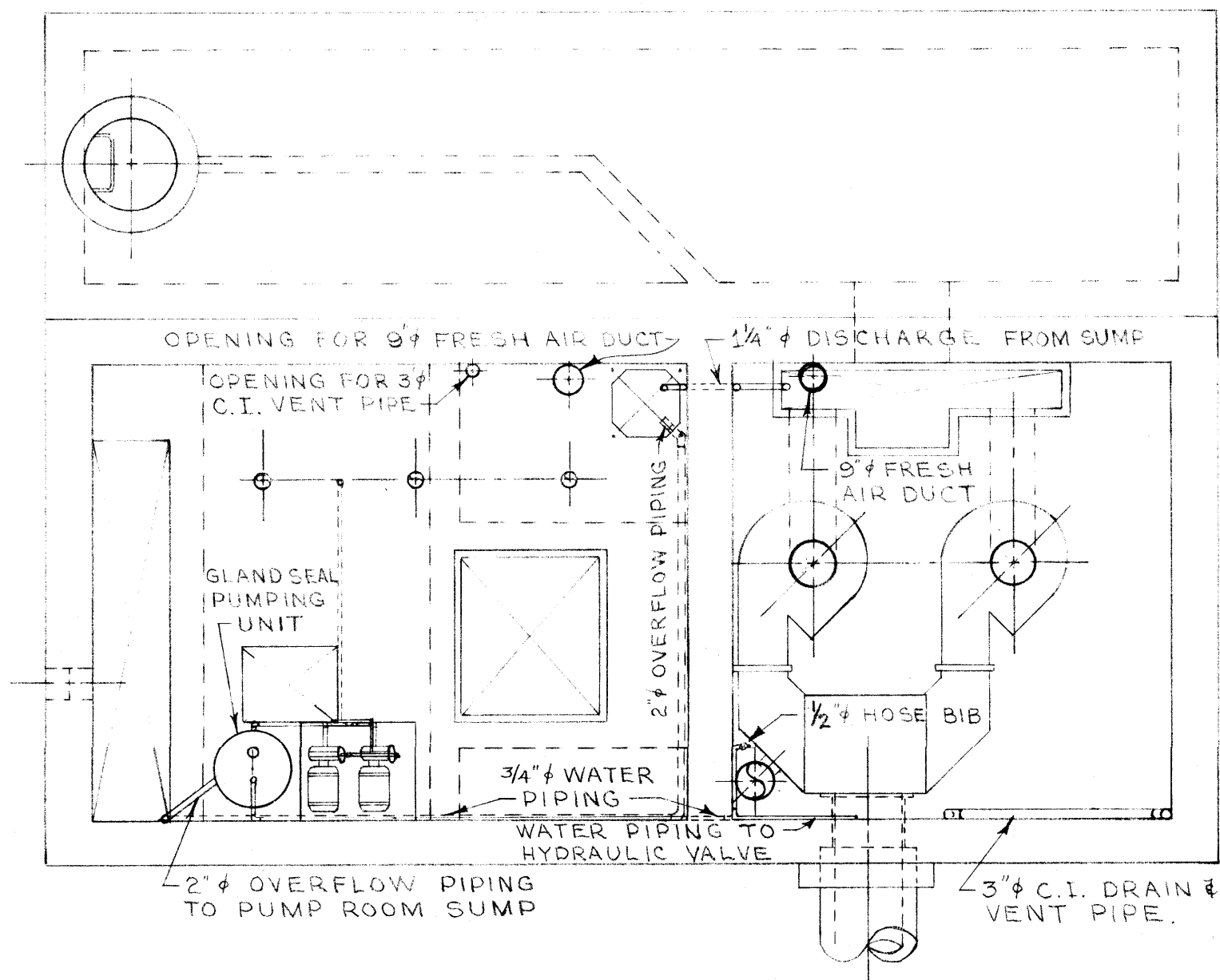
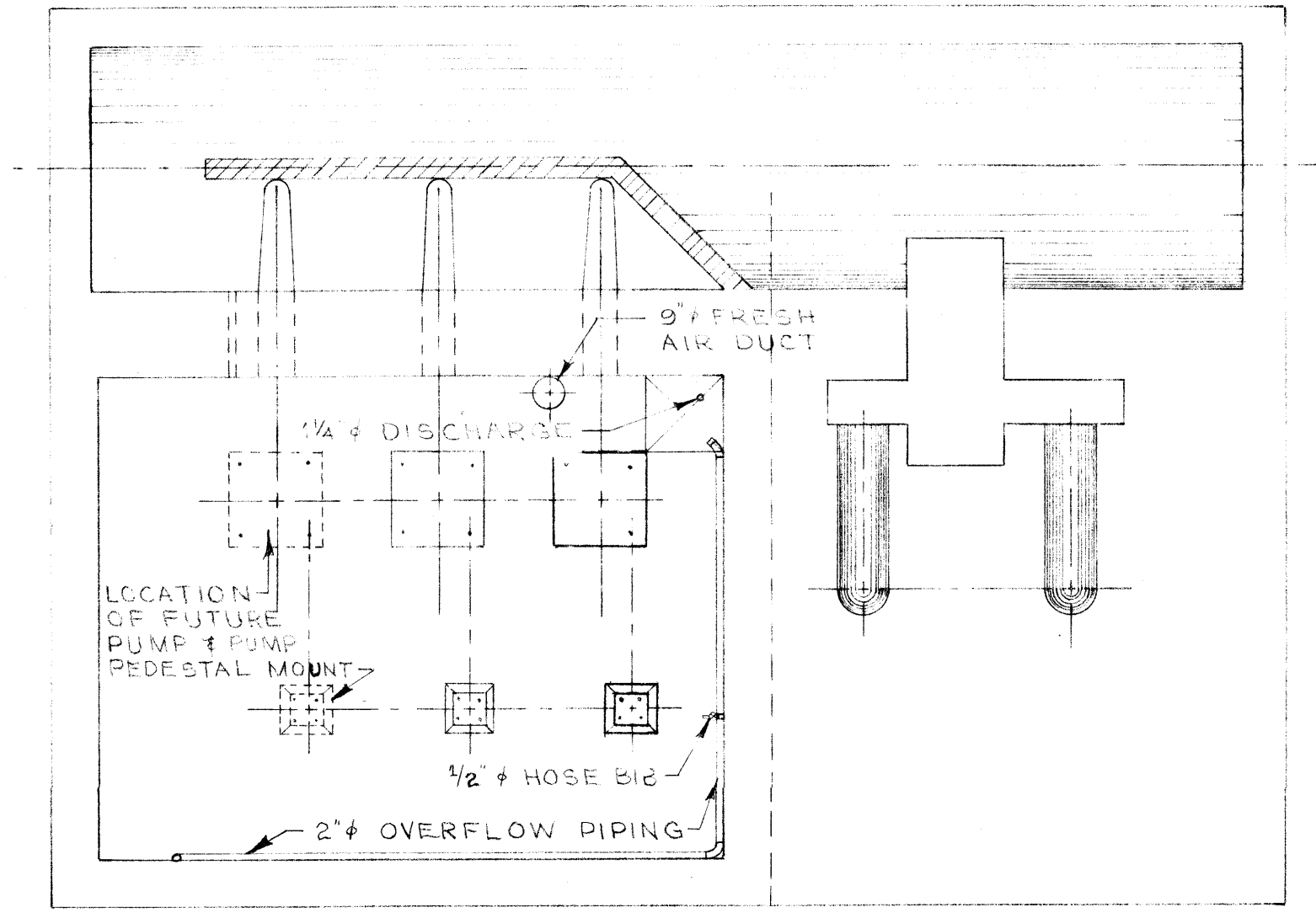


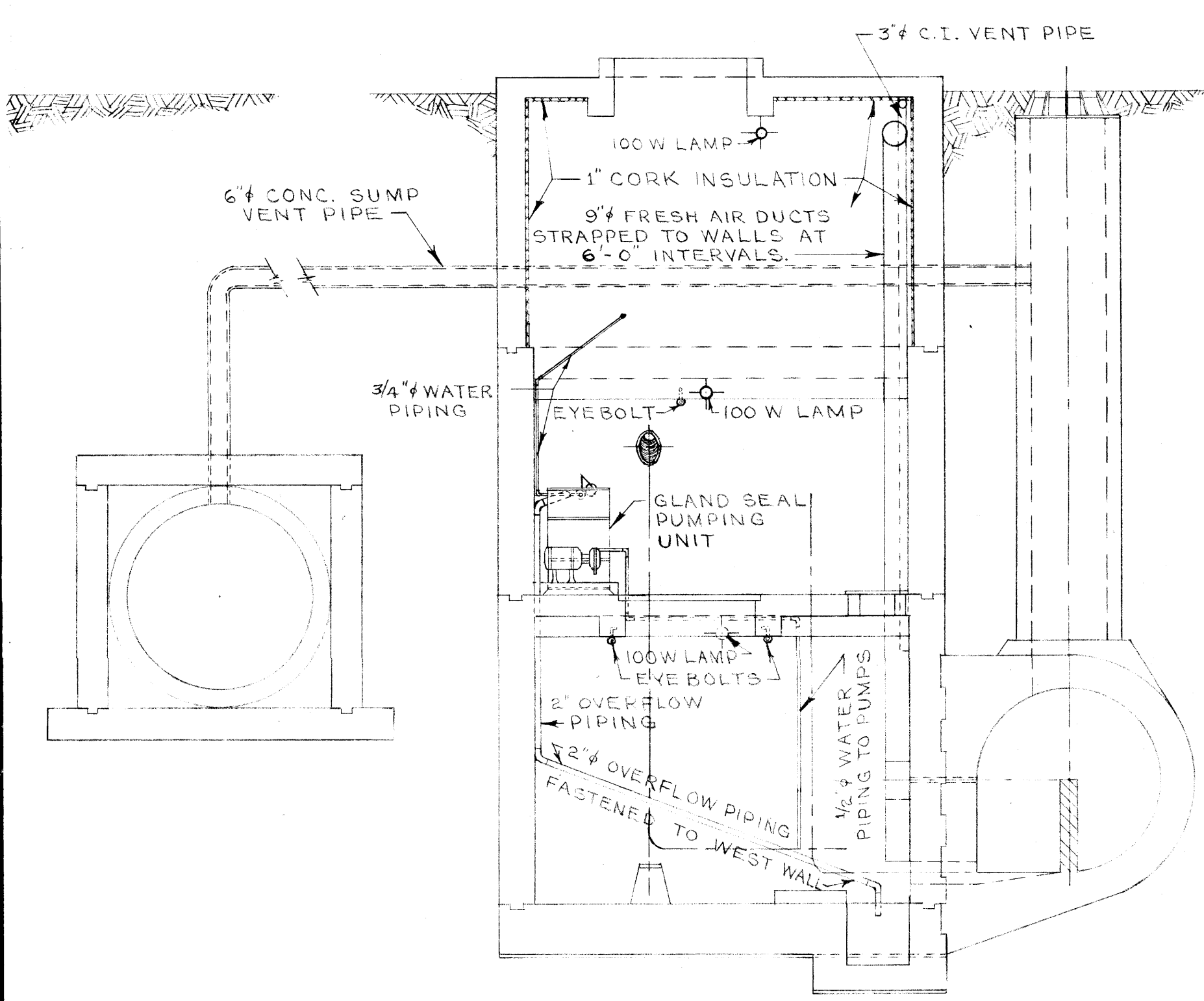
PLAN OF COMM. MOTOR RM. FL.



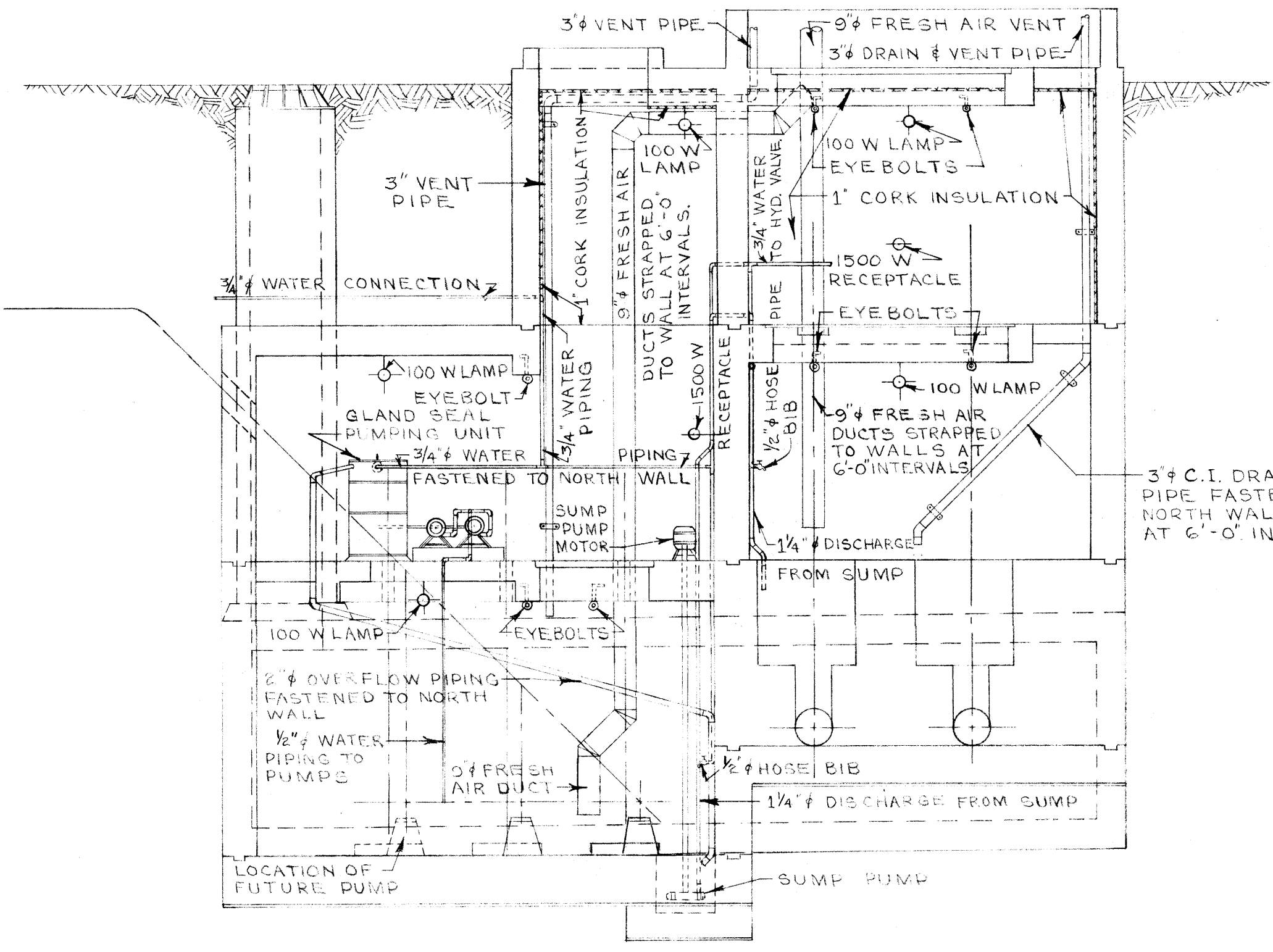
PLAN OF PUMP MOTOR RM. & COMM. CHAMBER FL.



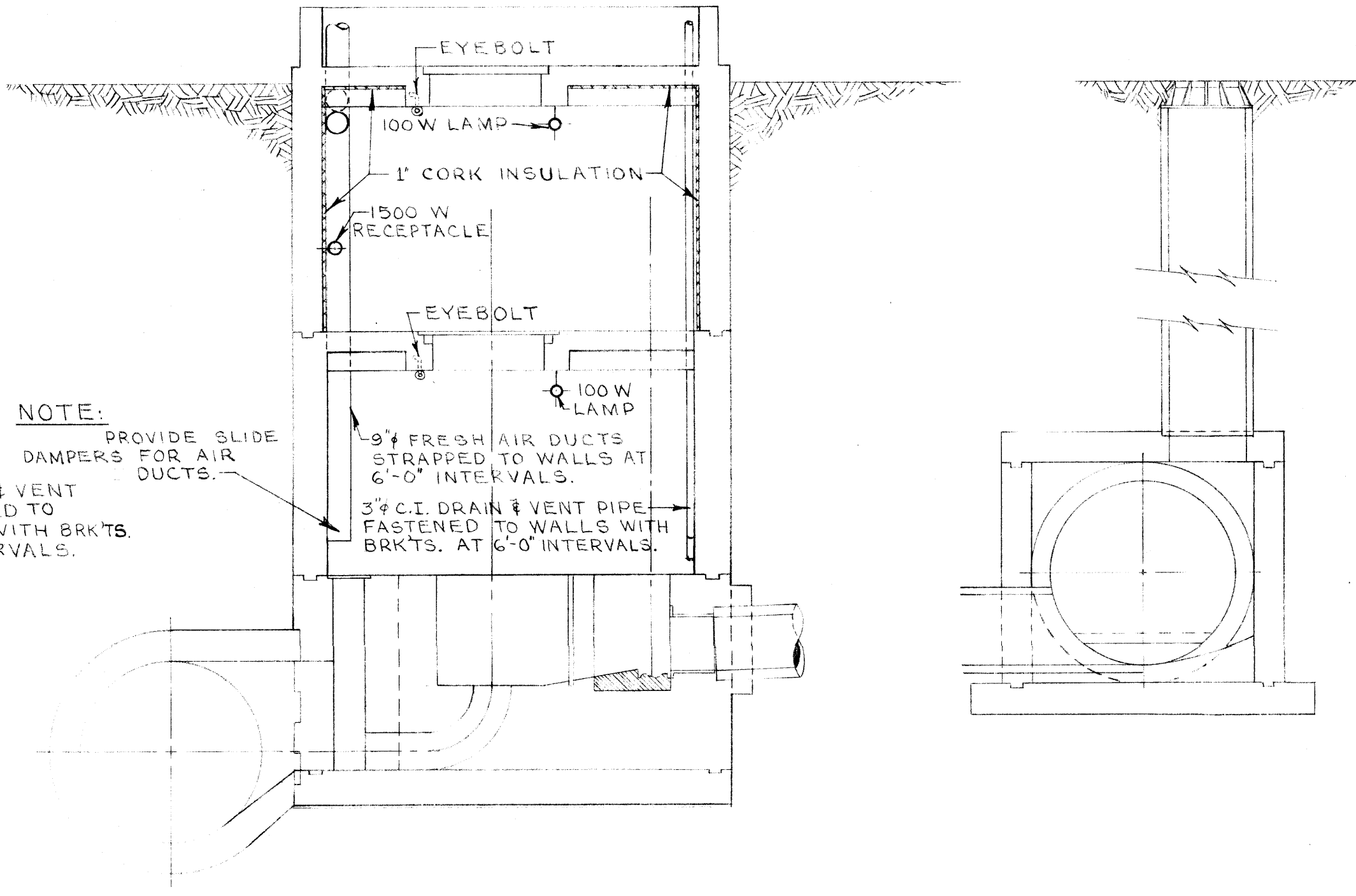
PLAN OF SUMP, PUMP CHAMBER & COMM. DISCHARGE



X-SEC. THRU PUMP CHAMBER, LOOKING EAST



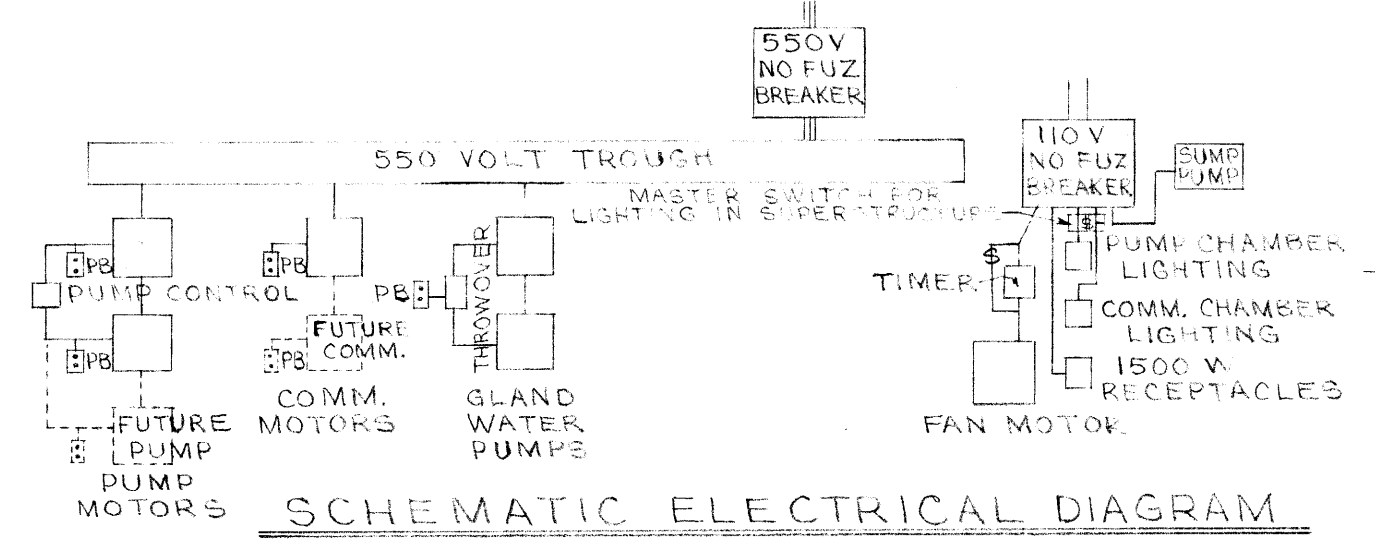
LONGITUDINAL SEC. LOOKING SOUTH



X-SEC. THRU COMM. CHAMBER, LOOKING WEST

Micro-Filmed 1965

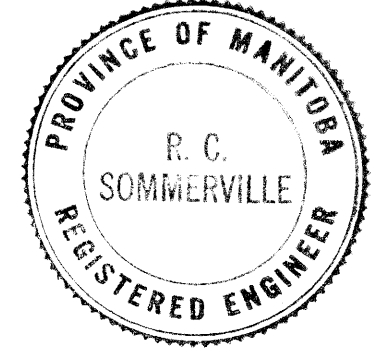
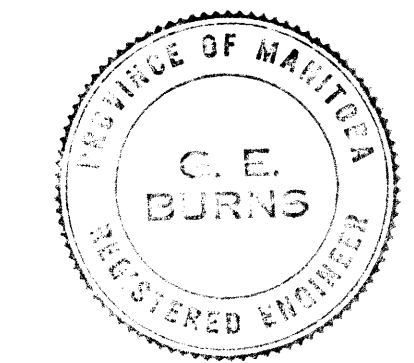
SEC. "A"



SCHEMATIC ELECTRICAL DIAGRAM

NOTE: SERVICE DROP SHALL BE A MINIMUM OF 9FT. TO GRADE.

FOR SUPERSTRUCTURE SEE DWG. NO. 330



REVISIONS		
NO.	DESCRIPTION	DATE BY

**GREATER WINNIPEG SANITARY DISTRICT  
SECONDARY SEWERS**

TITLE:  
**HAWTHORNE COMM. & PUMP STA.  
ELECTRICAL, VENTILATION,  
PIPING & EYEBOLT INSTALLATIONS.**

APPROVED BY:  
Supt. *A. Leaman*  
CHIEF ENGINEER

DESIGNED BY:  
G.E. BURNS

CHECKED BY:  
S.E. [Signature]  
DATE: 5 OCT. 59.

SCALES: 1/4" = 1'-0"

DRAWING NO.  
**331**

File # 10076 -

331

REF. OF DRAWING NO.

DETAILS