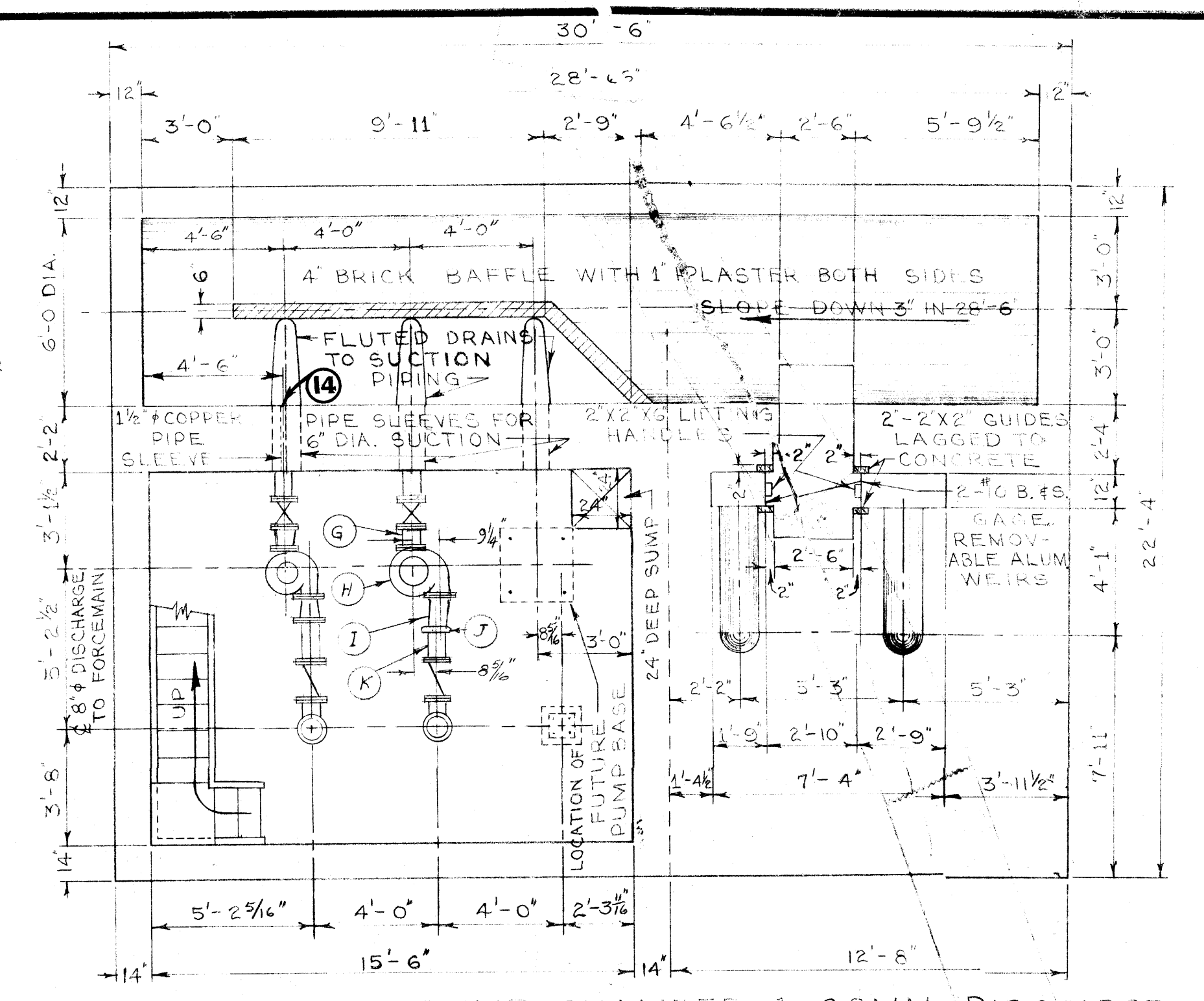
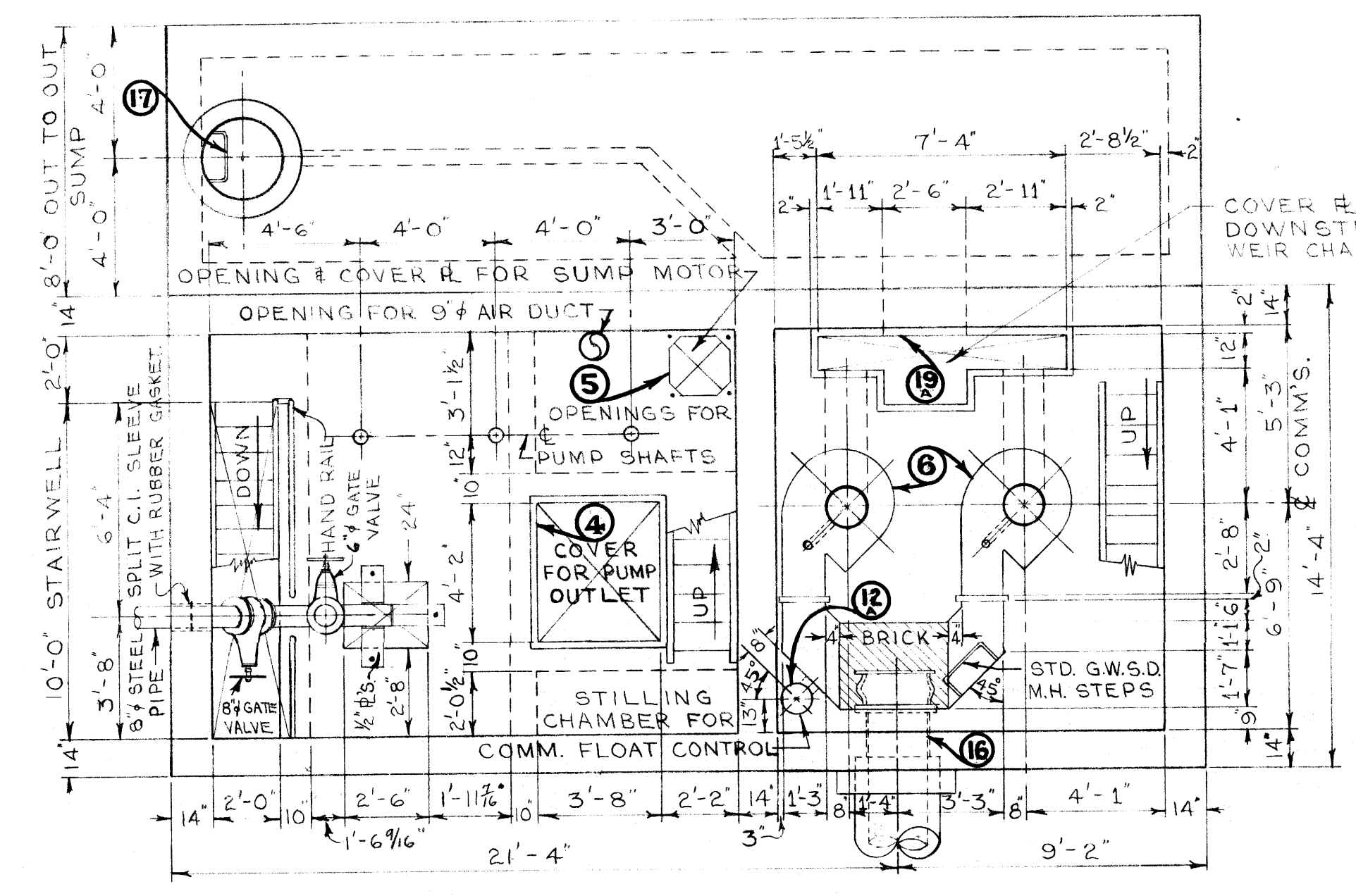
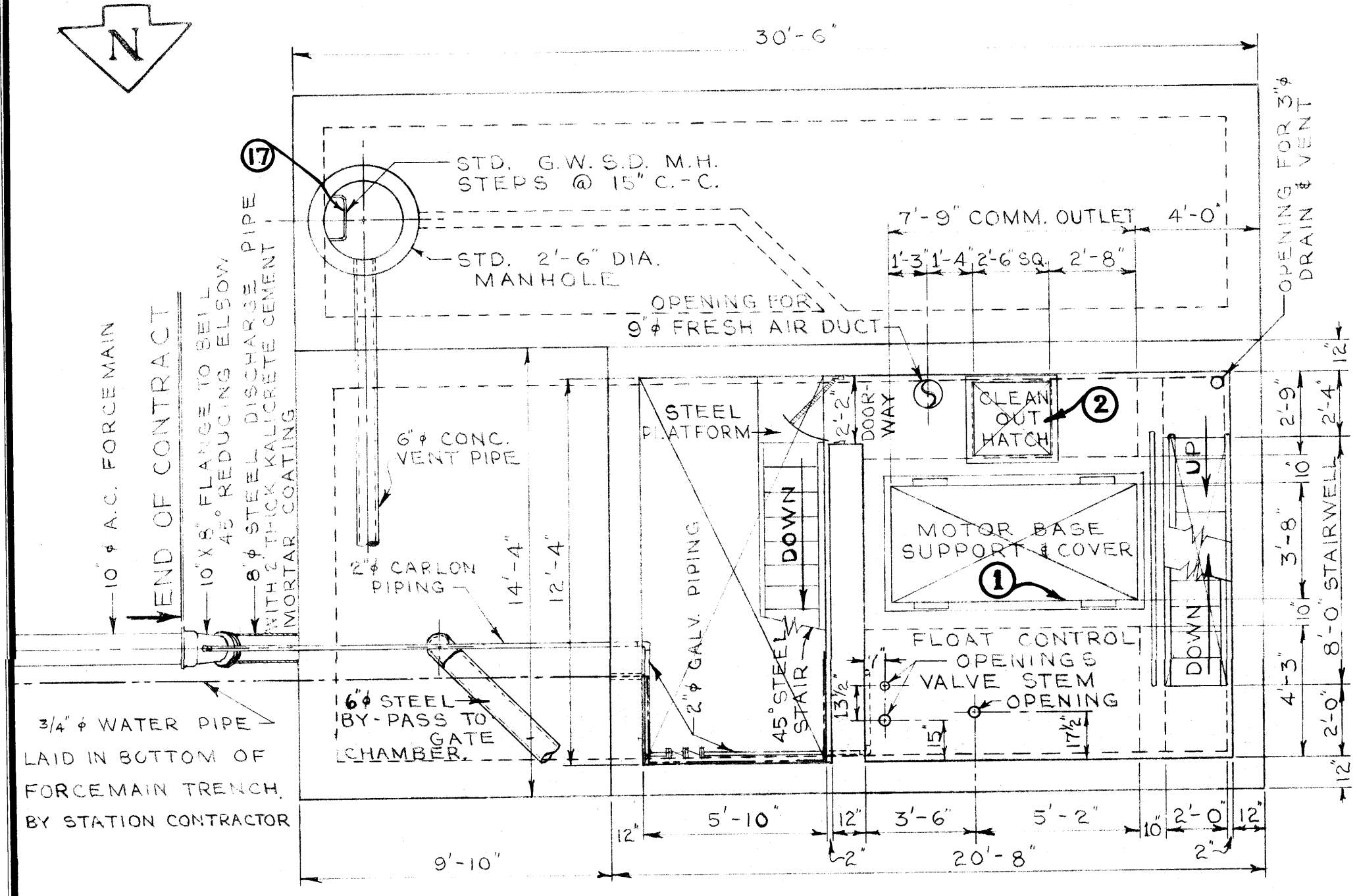
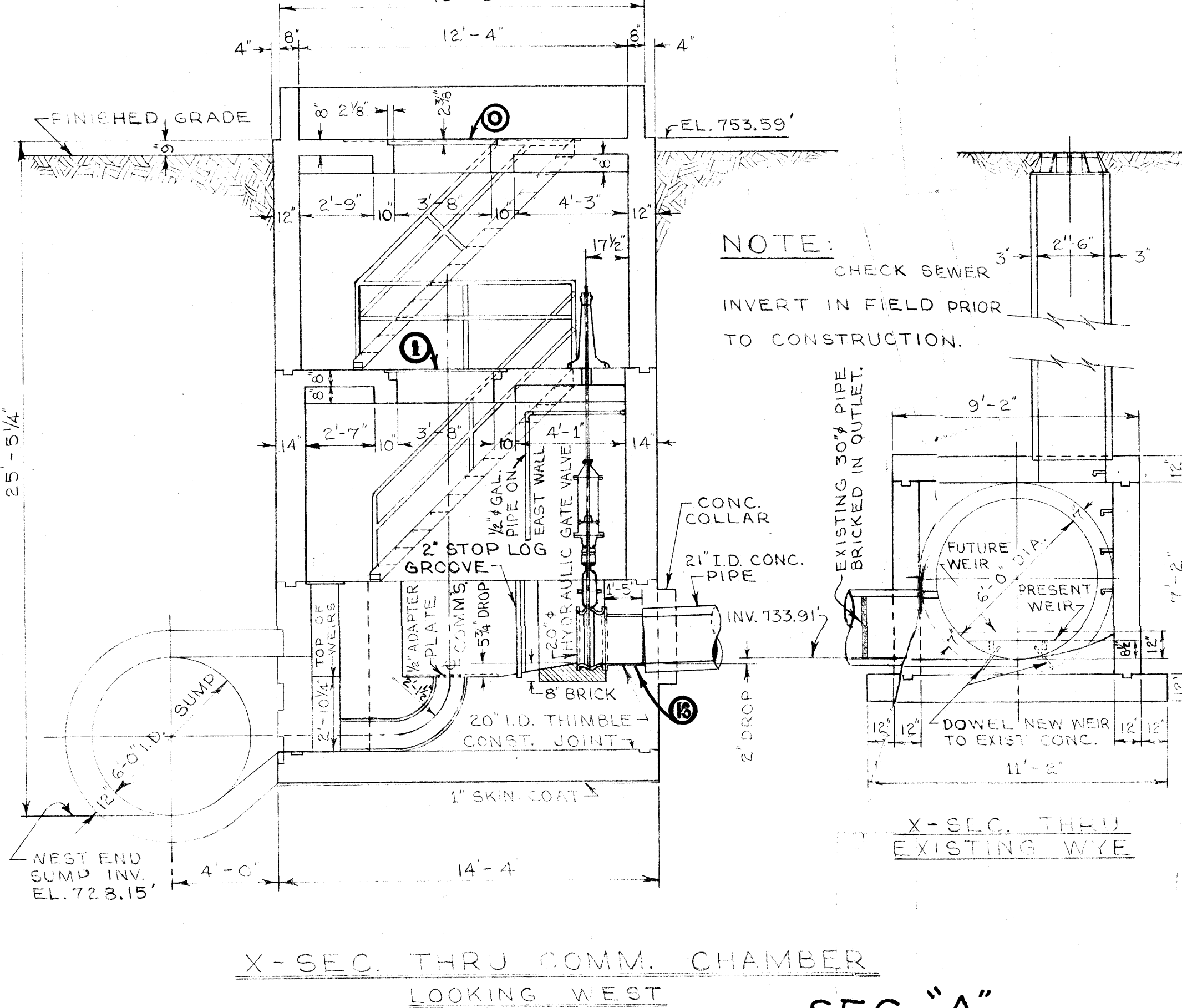
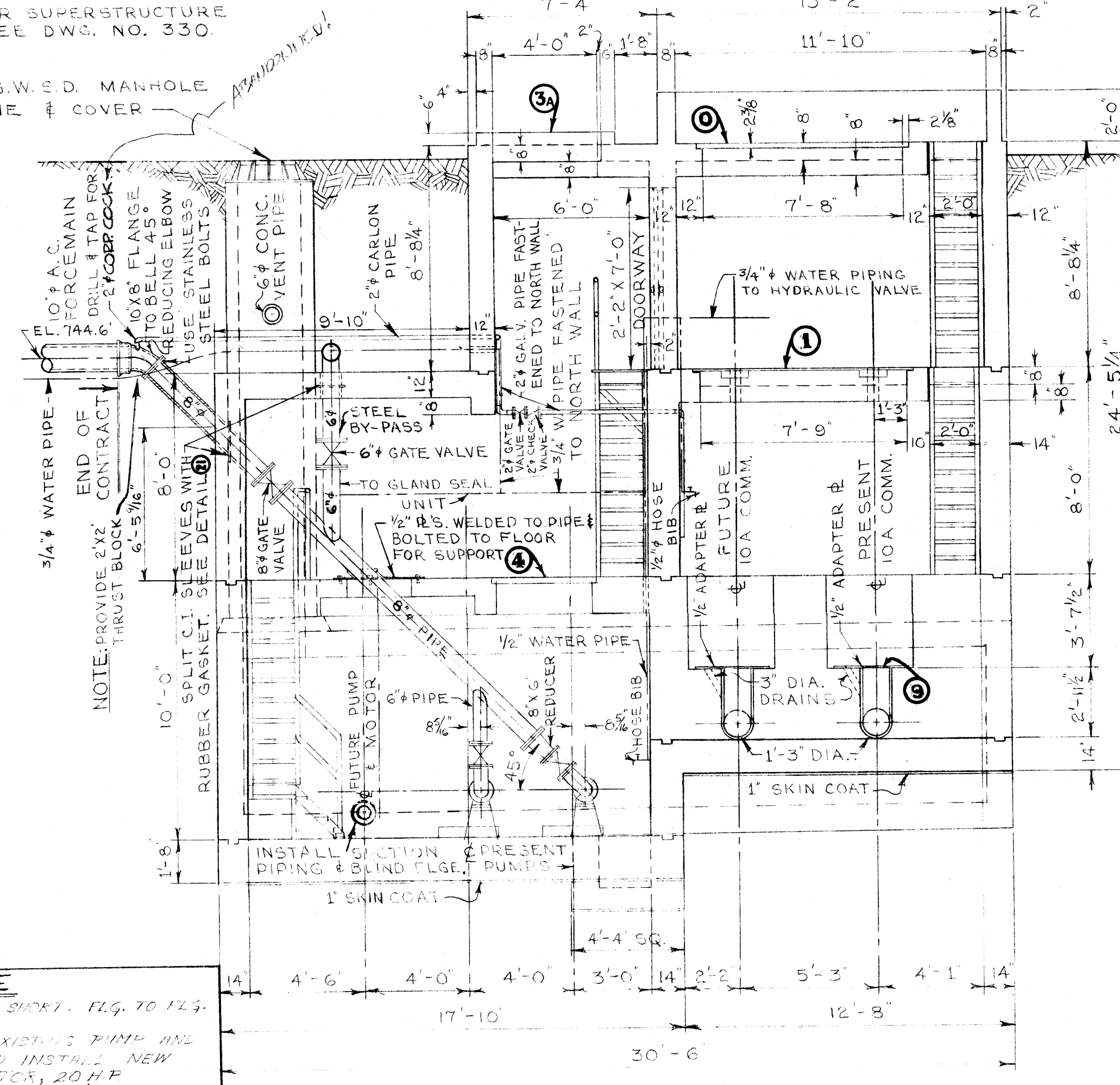
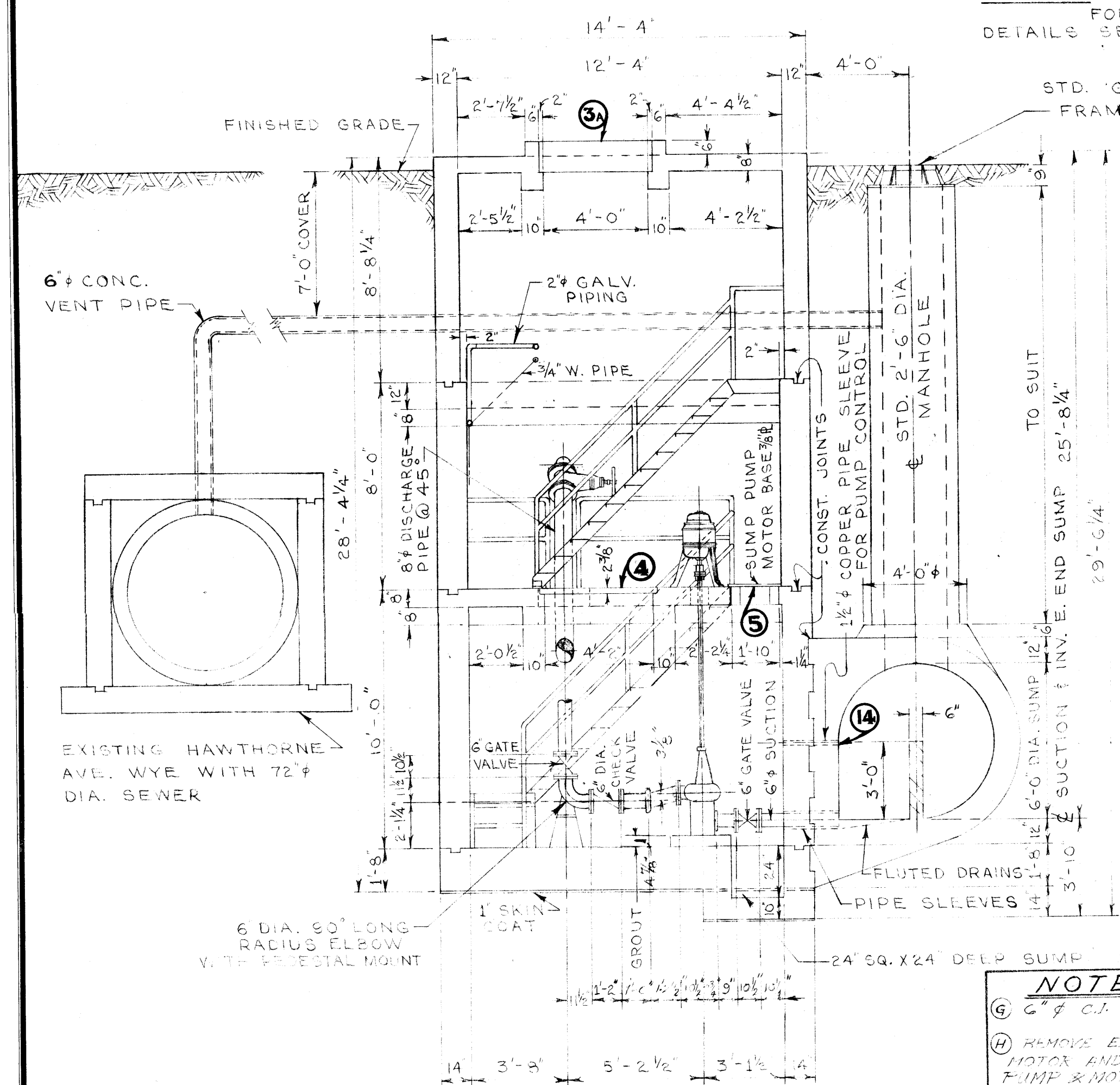


NOTE: ALL PIPE SLEEVES TO BE SEALED WITH BITUMASTIC COMPOUND TO PROVIDE WATER-TIGHT SEAL.



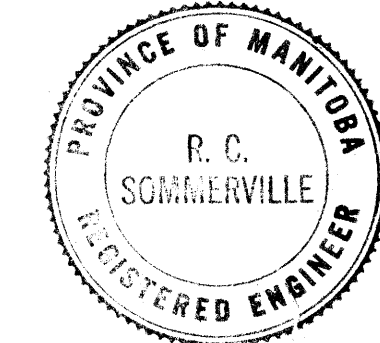
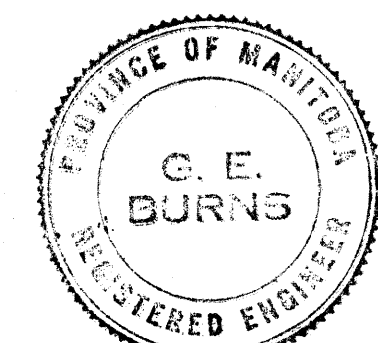
NOTE: FOR SUPERSTRUCTURE DETAILS SEE DWG. NO. 330.



NOTE: CHECK SEWER INVERT IN FIELD PRIOR TO CONSTRUCTION.

NOTE: 1. ALL STAIRS 45° PREFABRICATED STEEL CONSTRUCTION TO SUIT FIELD DIMENSIONS. 2. (NO) - NUMBERS REFER TO DETAIL DWGS.

NOTE: 1. 6" C.I. SHORT. FLG. TO FLG. 2. REMOVE EXISTING PUMP AND MOTOR AND INSTALL NEW PUMP & MOTOR, 20 HP. 6" SUCT. & 6" DISCH. (SUPPLIED UNDER WARRANTY CONTRACT) 3. 6" C.I. SHORT FLG. TO NOT 4. 2" WORM GEAR COUPLING STYLE #11. 5. 6" C.I. SHORT NOT TO FLG.



REVISIONS			
NO.	DESCRIPTION	DATE	BY
1	PUMP DIMENSIONS ADDED.	6 JAN 60	S.K.
2	PUMPS AND PIPING REPLACED	JUN 67	Y.D.

GREATER WINNIPEG SANITARY DISTRICT SECONDARY SEWERS

TITLE: **HAWTHORNE COMM. & PUMP STA. GENERAL LAYOUT OF SUBSTRUCTURE**

APPROVED BY: **Supt. A. Penner** CHIEF ENGINEER
 DESIGNED BY: **G. E. Burns**
 CHECKED BY: **R. C. Somerville**
 DATE: **29 OCT. 59**
 SCALE: **1/4" = 1'-0"**

DRAWING NO. **329**

file # SP 10074

329

REF. or DRAWING No. DETAILS