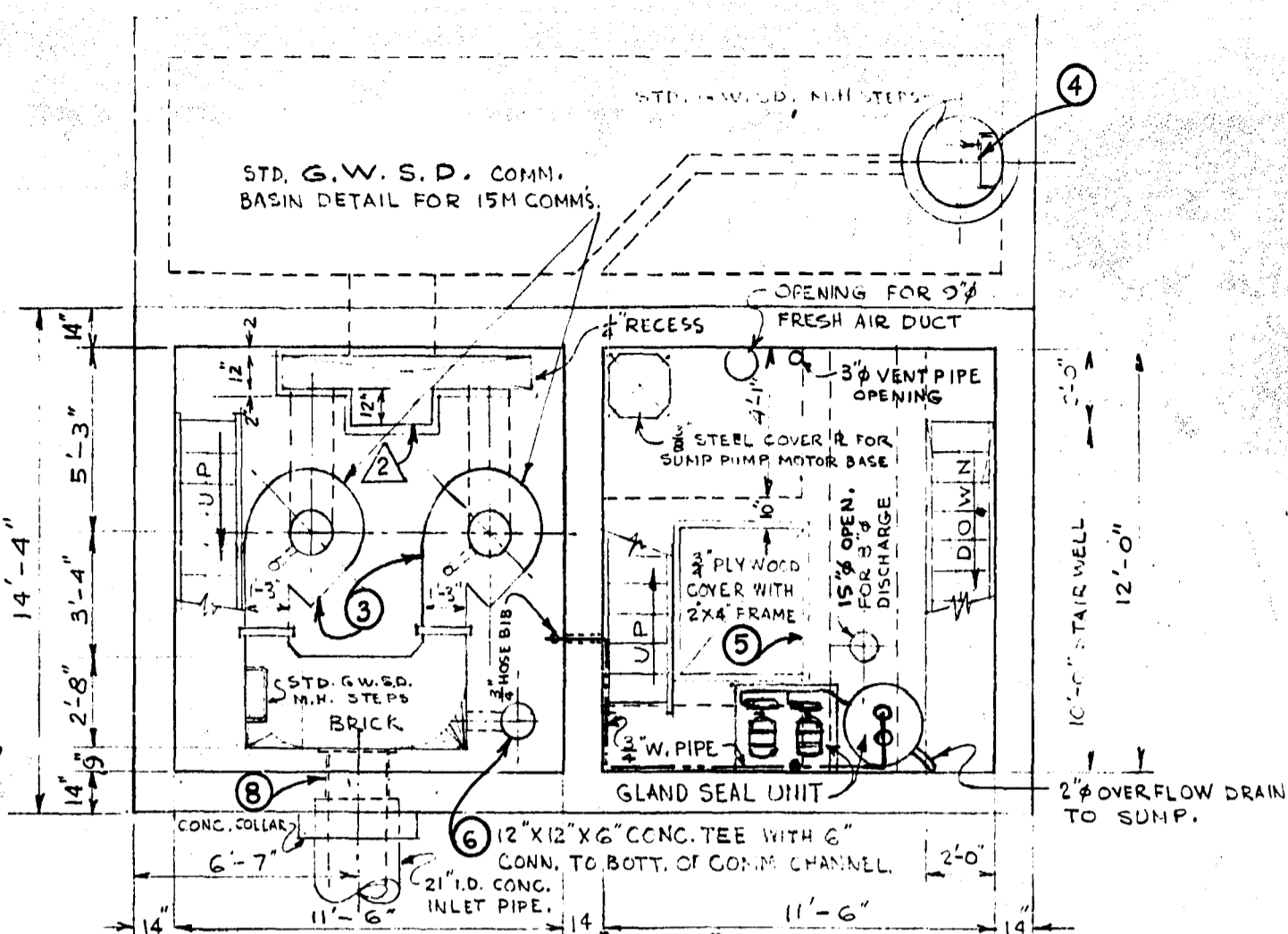
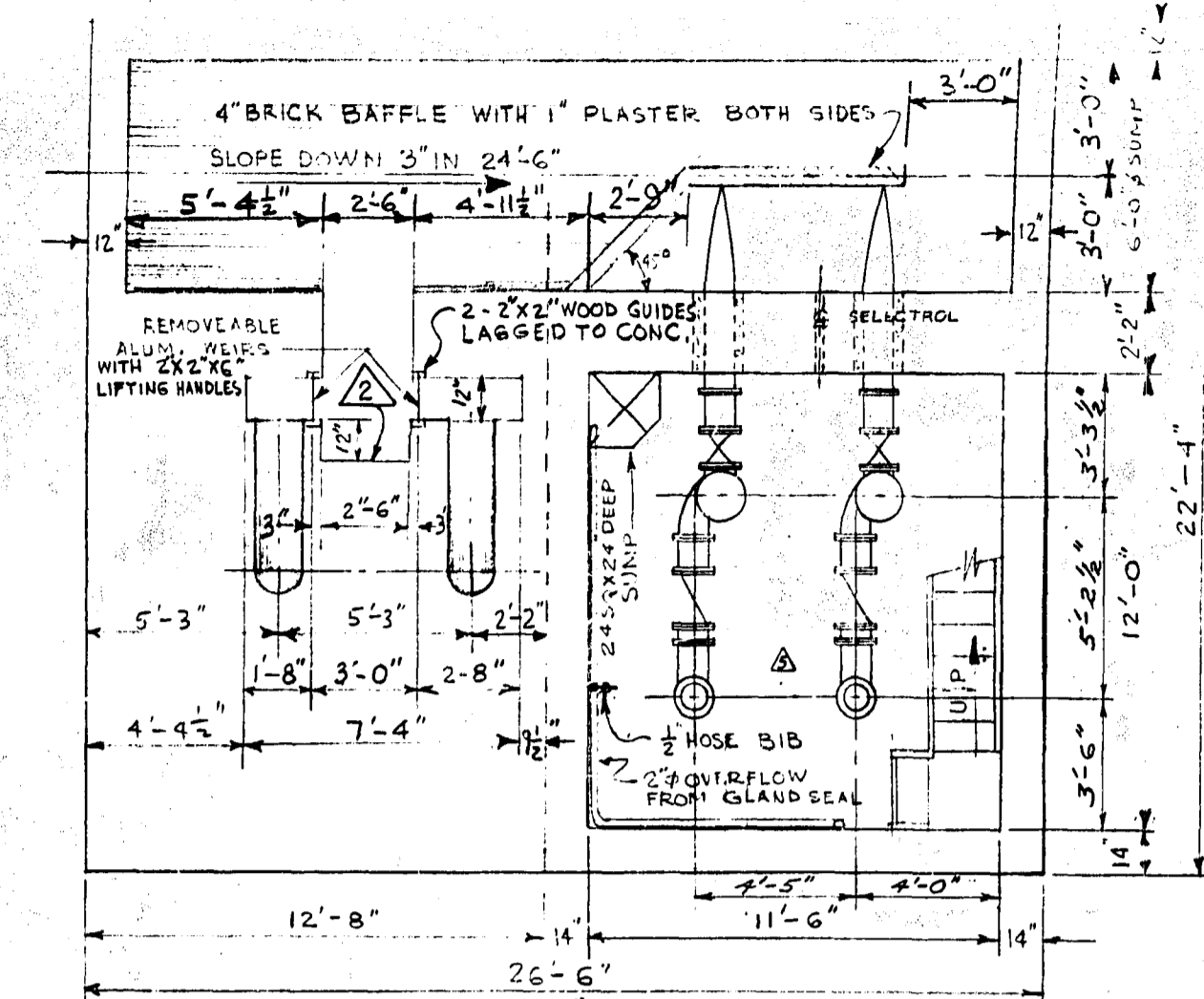


SEC. "A-A"



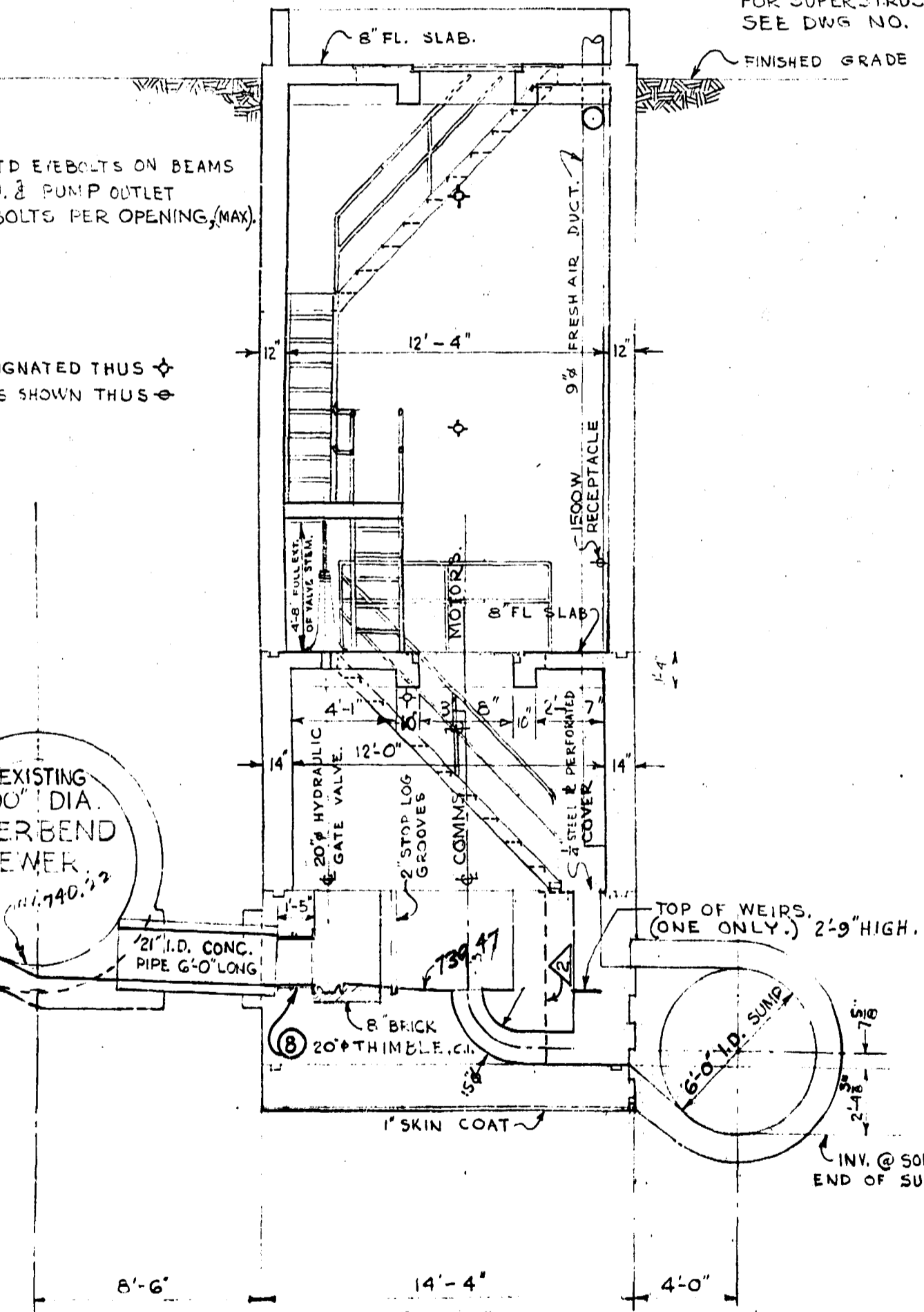
SEC. "B-B"



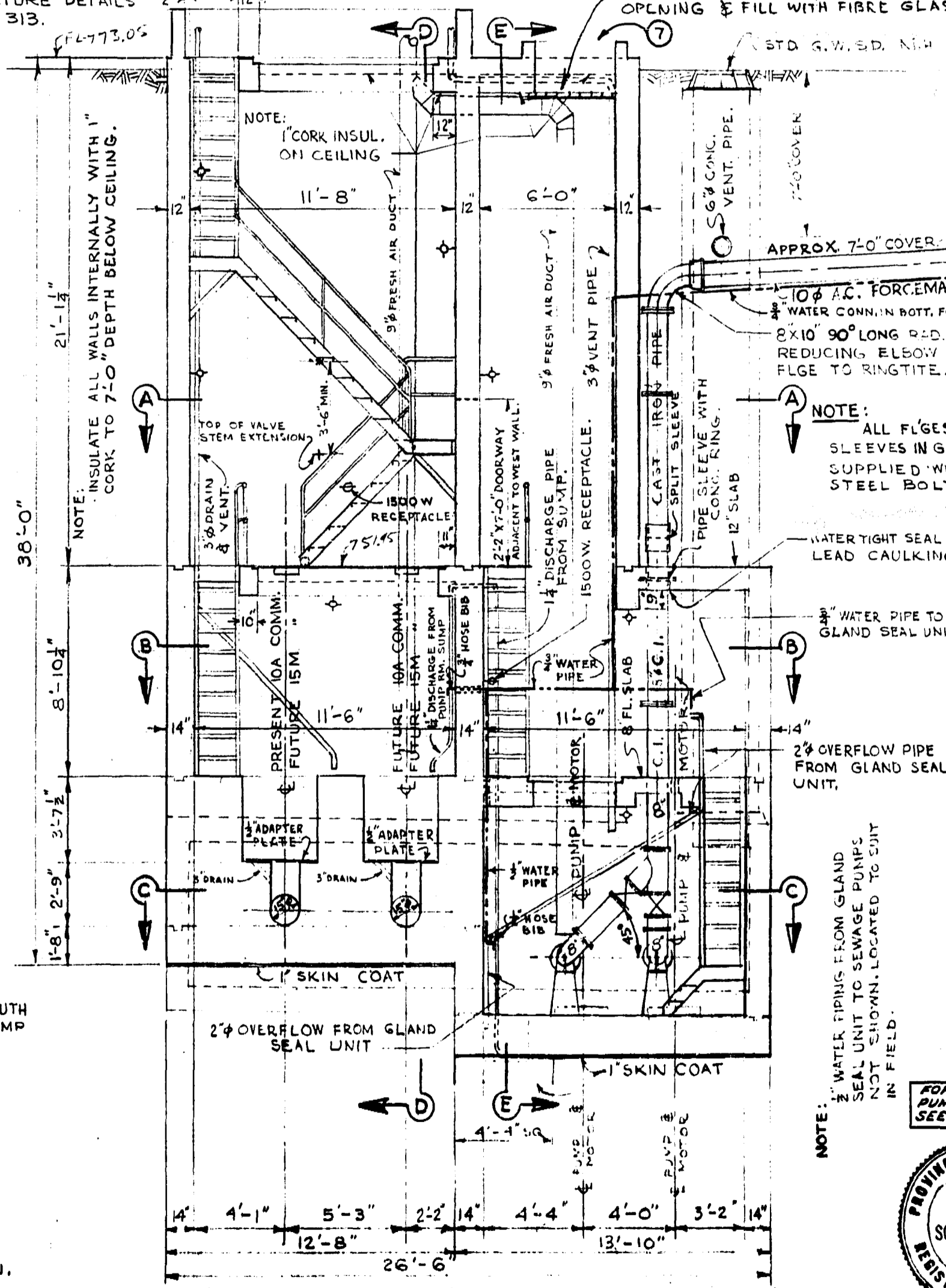
SEC. "C-C"

NOTE: PROVIDE G.W.S.D. STD. E/BOLTS ON BEAMS AROUND ALL COMM. & PUMP OUTLET OPENINGS. 4 EYEBOLTS PER OPENING, (MAX).

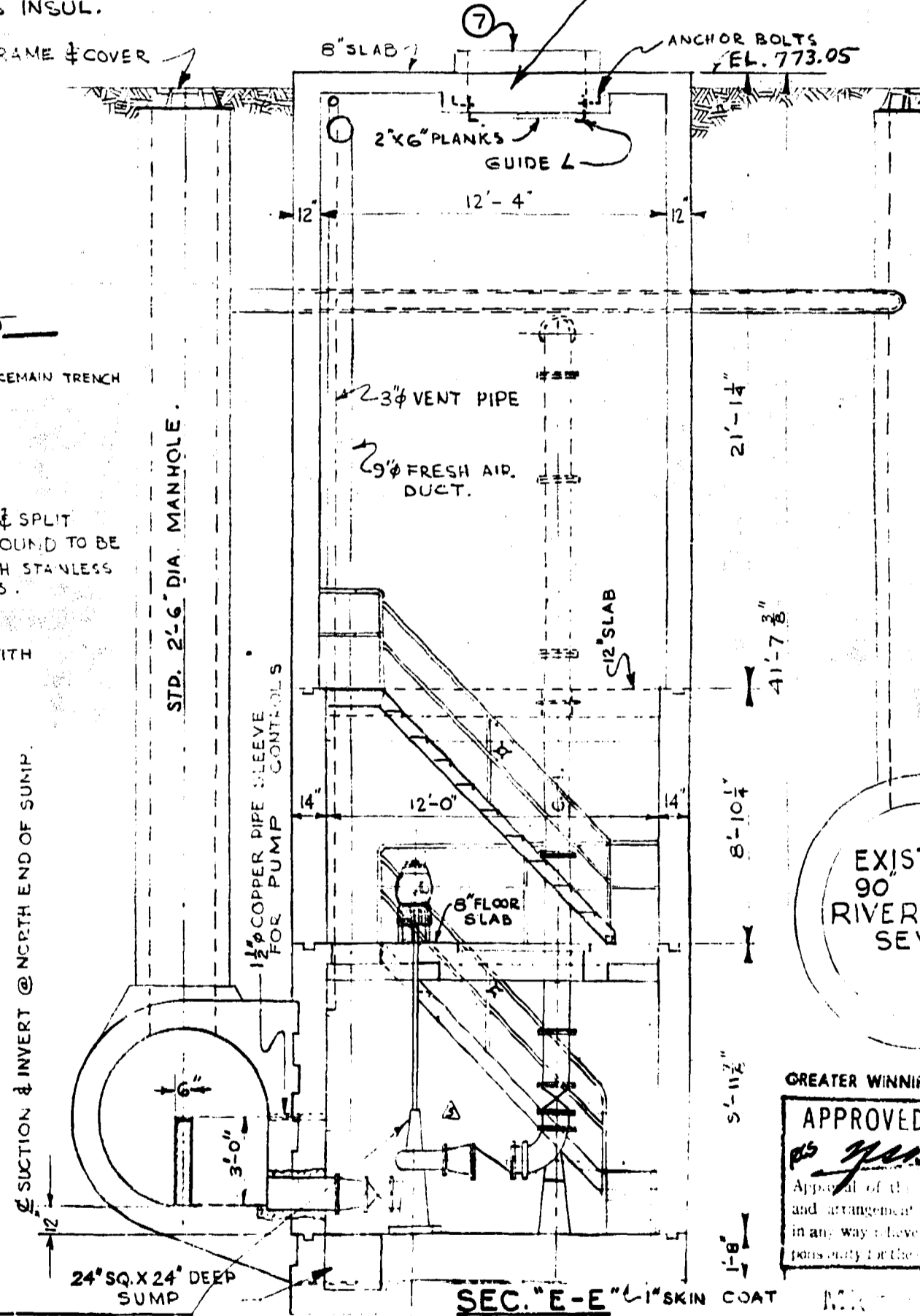
NOTE: ALL LAMPS 100W, DESIGNATED THUS \diamond 1500W RECEPTACLES SHOWN THUS \square



SEC. "D-D"



LONGITUDINAL SEC.



SEC. "E-E"

NOTE: ALL STEEL TO BE GALV. WITH 11% ZN TO PROVIDE WATER TIGHT SEAL.

NOTE: ALL STAIRS 45° PREFABRICATED STEEL. CONSTRUCTION TO SUIT FIELD DIMENSIONS. STD. PIPE HANDRAIL PROVIDED AS SHOWN.

NOTE: WATER TYPING FROM GLAND SEAL UNIT TO SEWAGE PUMPS NOT SHOWN, LOCATED TO SUIT IN FIELD.

FOR DETAILS OF PUMPS AND PIPING SEE DWG. NO. S-35C



GREATER WINNIPEG WATER & SANITARY DISTRICT
 APPROVED FOR CONSTRUCTION
 Date JAN 14 1972
 Approval of this drawing is given by the general manager and arrangement of material or equipment and location in any way have the Contractor of any liability or responsibility for the same.

REVISIONS			
NO.	DESCRIPTION	DATE	BY
1	DETAIL NO'S ADDED	9 JAN 69	HB
2	DOWNSTREAM WEIR CHANNEL ENLARGED	19 FEB 59	HB
3	PUMP DIMENSIONS ADDED	3 MAR 59	HB
4	DIMENSIONS CHANGED	23 MAR 59	SK
5	NEW PUMPS AND PIPING ADDED	JAN 72	VD

GREATER WINNIPEG SANITARY DISTRICT
 SECONDARY SEWERS

RIVERBEND COMM. & PUMPING STA.
 SUBSTRUCTURE - GENERAL LAYOUT.

APPROVED BY: *[Signature]*
 CHIEF ENGINEER

DRAWING NO. 314