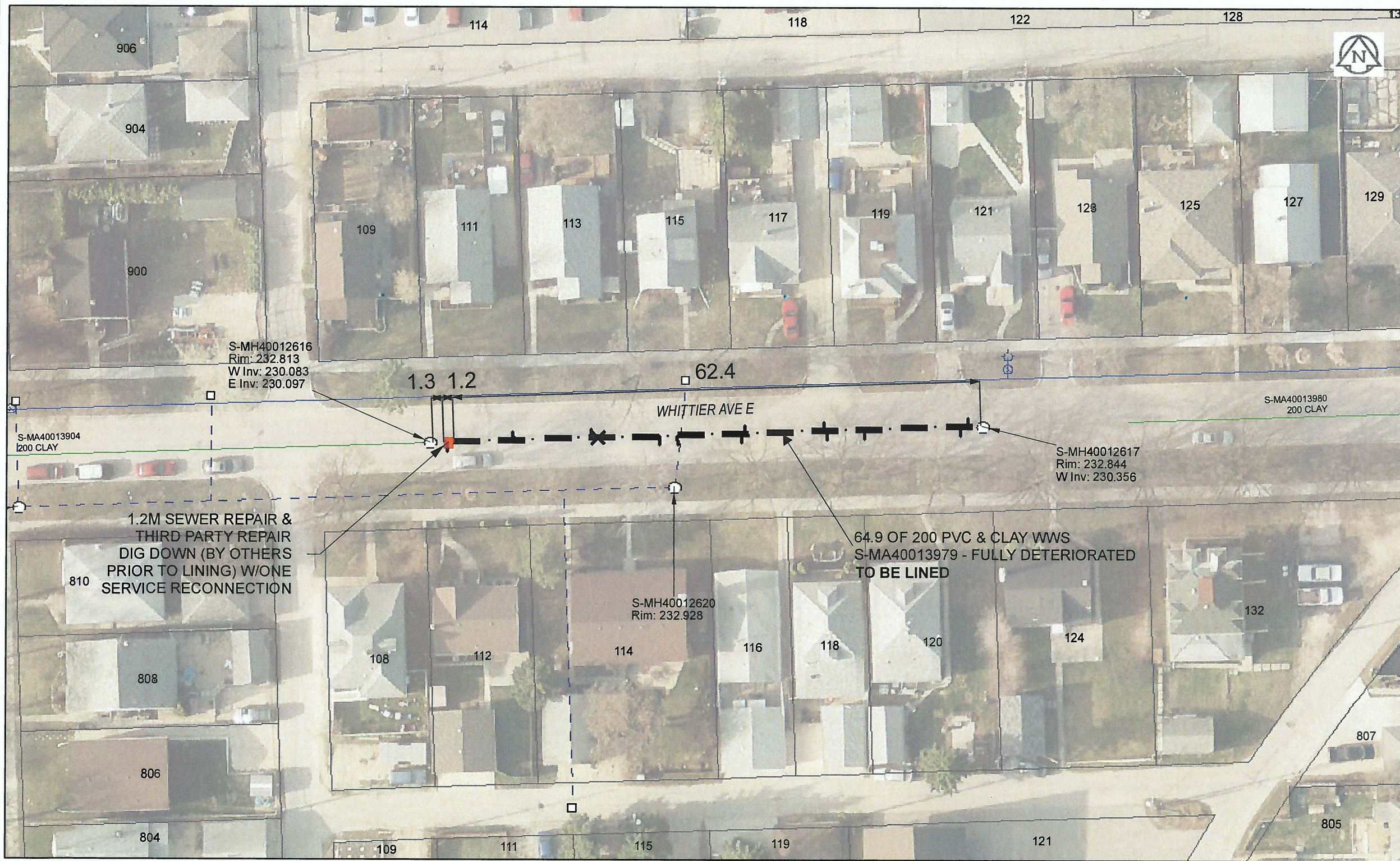


B SIZE 11" X 17" (279mm x 432mm)



Sewer Junction Information
(From Video Inspection)

Reference MH	Distance	Size	Clock
S-MH40012617	001.0	150	03
-	001.9	150	10
-	013.2	150	09
-	017.7	150	11
-	018.0	150	02
-	027.4	150	02
-	027.8	150	10
-	035.4	150	09
-	037.5	150	09
-	044.8	150	12
-	045.6	150	02
-	054.8	150	02
-	062.6	150	10

WARNING
IF POWER EQUIPMENT OR EXPLOSIVES ARE TO BE USED FOR EXCAVATION ON THIS PROJECT, THE CONTRACTOR MUST:
1) NOTIFY THE GAS COMPANY OF THE PROPOSED LOCATION OF EXCAVATION.
2) TAKE PRECAUTION TO AVOID DAMAGE TO GAS COMPANY INSTALLATIONS.
SEE PROVINCIAL REGULATION 140/92 FOR DETAILS

AECOM
Certificate of Authorization
AECOM Canada Ltd.
No. 4671 Date: *Dec 8, 2015*

METRIC
WHOLE NUMBERS INDICATE MILLIMETRES
DECIMALIZED NUMBERS INDICATE METRES
0 2.5 5 10 15 20
Meters

BID OPPORTUNITY NO. 821-2015

AECOM REVIEW DRFT CHK
FILE NAME: 2015 Lining.pdf SAVED BY: JD

LOCATION APPROVED UNDERGROUND STRUCTURES

SUPR. U/G STRUCTURES COMMITTEE	DATE

NOTE:
LOCATION OF UNDERGROUND STRUCTURES AS SHOWN ARE BASED ON THE BEST INFORMATION AVAILABLE. BUT NO GUARANTEE IS GIVEN THAT ALL EXISTING UTILITIES ARE SHOWN OR THAT THE GIVEN LOCATIONS ARE EXACT. CONFIRMATION OF EXISTENCE AND EXACT LOCATION OF ALL SERVICES MUST BE OBTAINED FROM THE INDIVIDUAL UTILITIES BEFORE PROCEEDING WITH CONSTRUCTION.

Can-Net GPS Reference Station WINN/810

NO.	ISSUED FOR TENDER	YY/MM/DD	BY
0	ISSUED FOR TENDER	15/12/08	JD

AECOM

DESIGNED BY	CM	CHECKED BY	<i>ADB</i>
DRAWN BY	JD	APPROVED BY	<i>[Signature]</i>
HOR. SCALE	1: 500	RELEASED FOR CONSTRUCTION	<i>[Signature]</i>
VERT. SCALE	N/A	DATE	<i>Dec 9/15</i>

PROFESSIONAL'S SEAL
PROVINCE OF MANITOBA
ADB
BRAUN
Member
24453
REGISTERED ENGINEER
CONSULTANT DRAWING NO.
60438708-01-C-2015 Lining-R0X.mxd

THE CITY OF WINNIPEG
WATER AND WASTE DEPARTMENT

2015 SEWER RENEWALS
BY CIPP LINING
CONTRACT 3
WHITTIER AV E
2ND MH E OF DAY ST TO 1ST MH E OF DAY ST

SHEET	45 OF 45
CITY DRAWING NUMBER	11117
REV	0