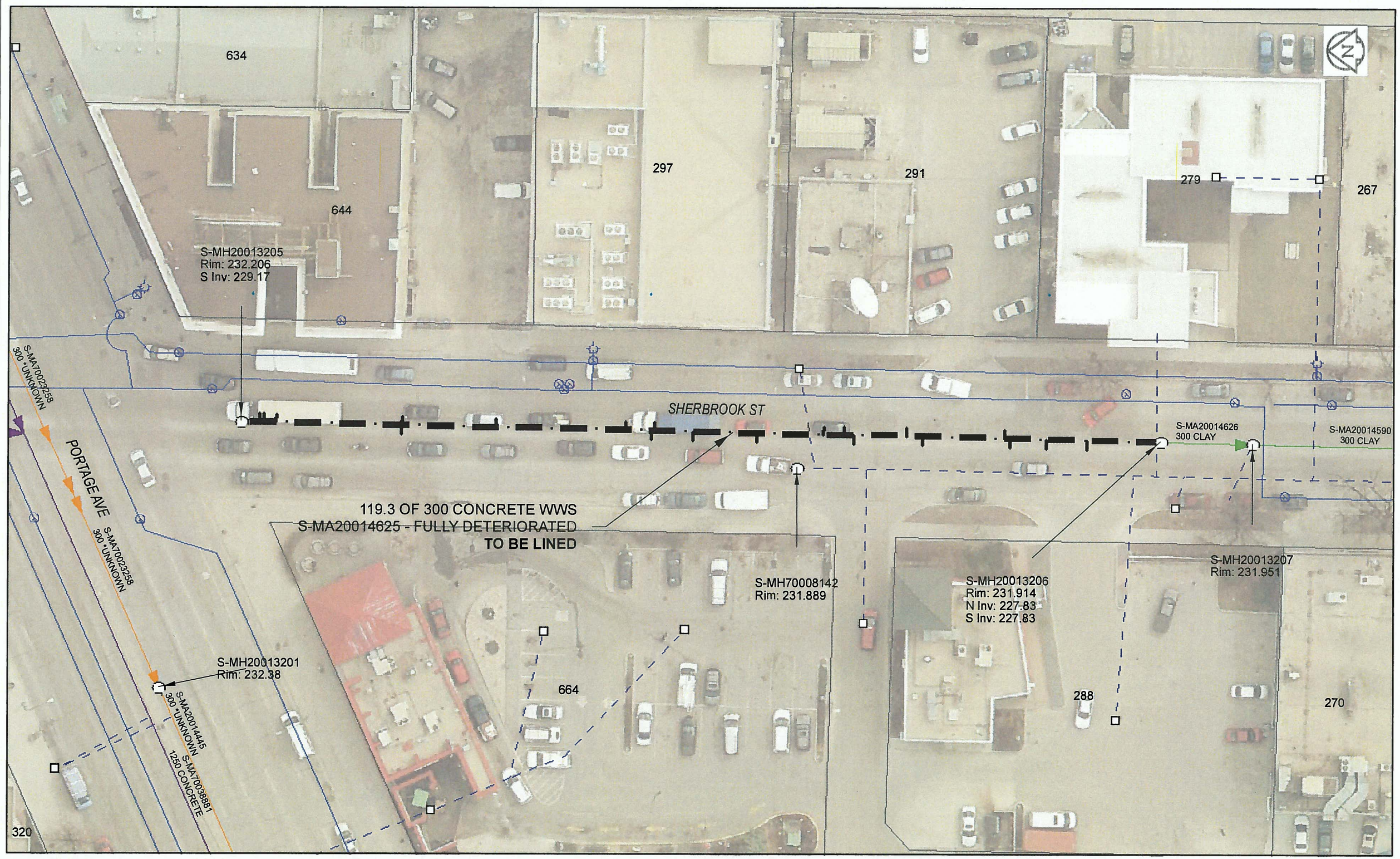


B SIZE 11" X 17" (279mm x 432mm)



Sewer Junction Information

(From Video Inspection)

Reference MH	Distance	Size	Clock
S-MH20013205	002.1	150	10
-	002.6	150	10
-	004.1	150	10
-	019.1	150	10
-	019.1	150	02
-	030.3	150	10
-	045.8	150	10
-	048.9	150	02
-	049.3	150	10
-	053.9	150	02
-	061.5	150	01
-	069.4	150	10
-	071.9	150	10
-	073.0	150	02
-	079.4	150	10
-	081.3	150	01
-	091.1	150	10
-	091.7	150	02
-	096.0	150	02
-	100.9	150	02

WARNING
 IF POWER EQUIPMENT OR EXPLOSIVES ARE TO BE USED FOR EXCAVATION ON THIS PROJECT, THE CONTRACTOR MUST:
 1) NOTIFY THE GAS COMPANY OF THE PROPOSED LOCATION OF EXCAVATION.
 2) TAKE PRECAUTION TO AVOID DAMAGE TO GAS COMPANY INSTALLATIONS.
 SEE PROVINCIAL REGULATION 140/92 FOR DETAILS

APEGM
 Certificate of Authorization
 AECOM Canada Ltd.
 No. 4671 Date: Dec 8, 2015

METRIC
 WHOLE NUMBERS INDICATE MILLIMETRES
 DECIMALIZED NUMBERS INDICATE METRES
 0 2.5 5 10 15 20
 Meters

BID OPPORTUNITY NO. 821-2015

AECOM REVIEW	DRFT CHK	FILE NAME: 2015 Lining.pdf	SAVED BY: JD
		LOCATION APPROVED UNDERGROUND STRUCTURES	Can-Net GPS Reference Station WINN/810
SUPR. U/G STRUCTURES COMMITTEE		DATE	
NOTE: LOCATION OF UNDERGROUND STRUCTURES AS SHOWN ARE BASED ON THE BEST INFORMATION AVAILABLE. BUT NO GUARANTEE IS GIVEN THAT ALL EXISTING UTILITIES ARE SHOWN OR THAT THE GIVEN LOCATIONS ARE EXACT. CONFIRMATION OF EXISTENCE AND EXACT LOCATION OF ALL SERVICES MUST BE OBTAINED FROM THE INDIVIDUAL UTILITIES BEFORE PROCEEDING WITH CONSTRUCTION.			
NO.	ISSUED FOR TENDER	15/12/08	JD
NO.	REVISIONS	YY/MM/DD	BY

AECOM

DESIGNED BY	CM	CHECKED BY	ADB
DRAWN BY	JD	APPROVED BY	[Signature]
HOR. SCALE	1:500	RELEASED FOR CONSTRUCTION	[Signature]
VERT. SCALE	N/A	DATE	Dec 9/15

PROFESSIONAL'S SEAL
 PROVINCE OF MANITOBA
 ADB
 Member
 24453
 REGISTERED ENGINEER
 CONSULTANT DRAWING NO.
 60438708-01-C-2015 Lining-R0X.mxd

THE CITY OF WINNIPEG
 WATER AND WASTE DEPARTMENT

2015 SEWER RENEWALS
 BY CIPP LINING
 CONTRACT 3
 SHERBROOK ST
 MH AT PORTAGE AV (N PL) TO 1ST MH S PORTAGE AV

SHEET	35 OF 45
CITY DRAWING NUMBER	11107
REV	0