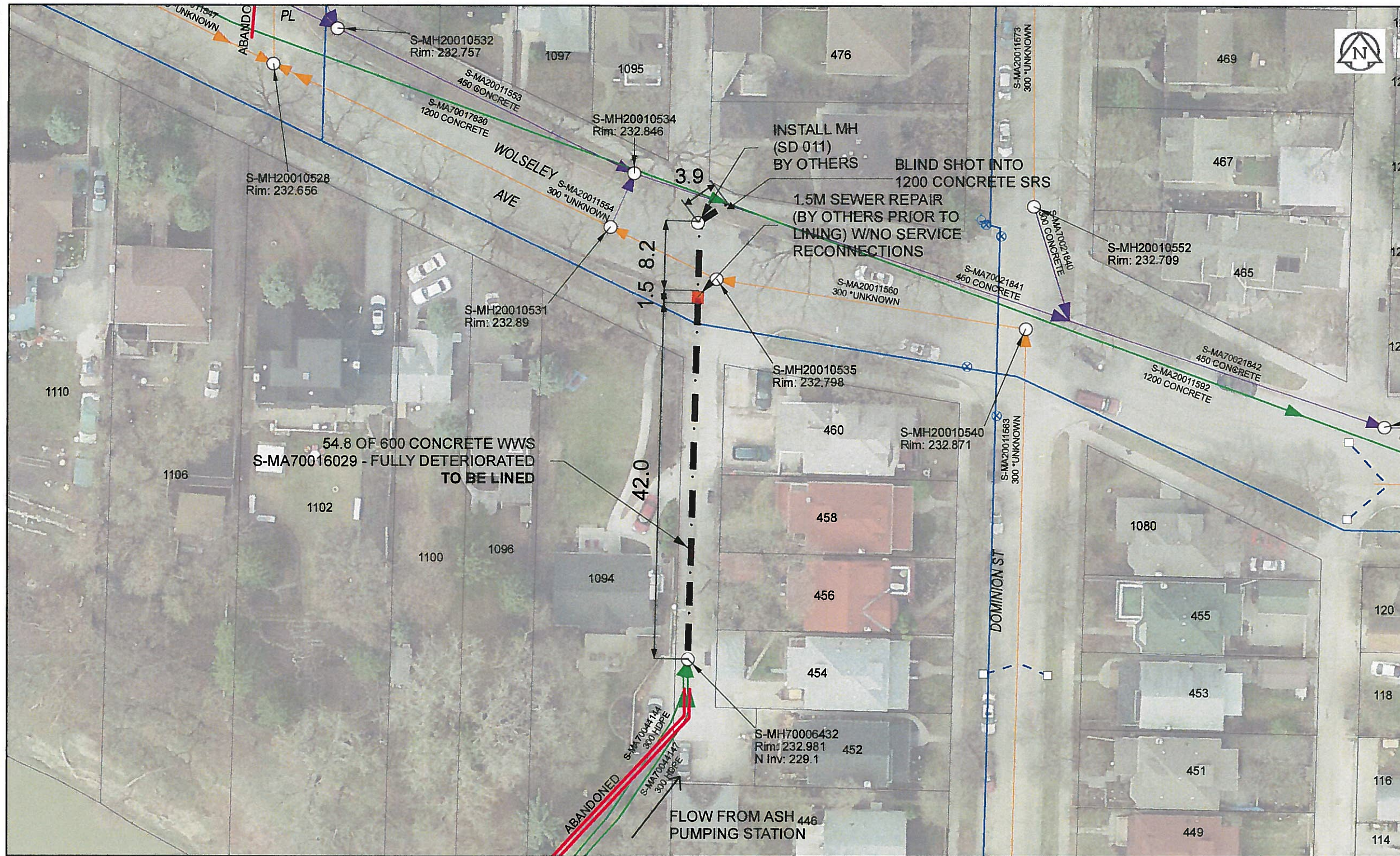


B SIZE 11" X 17" (279mm x 432mm)



**Sewer Junction Information**  
(From Video Inspection)  
Reference MH Distance Size Clock

LINER TO BE INSTALLED BETWEEN 01.11.2016 AND 28.02.2017, AS PER THE SPECIFICATIONS.

THE CIPP LINER SHALL BE INSTALLED WITH A CONTINUOUS TEMPERATURE SENSING CABLE AS PER THE SPECIFICATIONS.

PLEASE REFER TO FLOW CONTROL REQUIREMENTS IN SPECIFICATIONS.

**WARNING**

IF POWER EQUIPMENT OR EXPLOSIVES ARE TO BE USED FOR EXCAVATION ON THIS PROJECT, THE CONTRACTOR MUST:

- 1) NOTIFY THE GAS COMPANY OF THE PROPOSED LOCATION OF EXCAVATION.
- 2) TAKE PRECAUTION TO AVOID DAMAGE TO GAS COMPANY INSTALLATIONS. SEE PROVINCIAL REGULATION 140/92 FOR DETAILS.

**AECOM**  
Certificate of Authorization  
AECOM Canada Ltd.  
No. 4671 Date: Jan 7/15

**METRIC**  
WHOLE NUMBERS INDICATE MILLIMETRES  
DECIMALIZED NUMBERS INDICATE METRES

0 2.5 5 10 15 20  
Meters

BID OPPORTUNITY NO. 821-2015

AECOM REVIEW DRAFT CHK

**LOCATION APPROVED UNDERGROUND STRUCTURES**

SUPR. U/G STRUCTURES DATE COMMITTEE

**NOTE:**  
LOCATION OF UNDERGROUND STRUCTURES AS SHOWN ARE BASED ON THE BEST INFORMATION AVAILABLE. BUT NO GUARANTEE IS GIVEN THAT ALL EXISTING UTILITIES ARE SHOWN OR THAT THE GIVEN LOCATIONS ARE EXACT. CONFIRMATION OF EXISTENCE AND EXACT LOCATION OF ALL SERVICES MUST BE OBTAINED FROM THE INDIVIDUAL UTILITIES BEFORE PROCEEDING WITH CONSTRUCTION.

NO.	REVISIONS	YY/MM/DD	BY
1	REVISED WITH ADDITIONAL NOTES	16/01/06	MP
0	ISSUED FOR TENDER	15/12/08	JD

**AECOM**

DESIGNED BY: CM  
CHECKED BY: ADB  
DRAWN BY: JD  
APPROVED BY: [Signature]  
HOR. SCALE: 1:500  
VERT. SCALE: N/A  
RELEASED FOR CONSTRUCTION: K. Zurek  
DATE: 15/12/09

PROFESSIONAL'S SEAL

PROVINCE OF MANITOBA  
K. ZUREK  
BRAUN  
Member  
24453  
REGISTERED ENGINEER

CONSULTANT DRAWING NO. 60438708-01-C-x2015 Lining\_27-R0X.mxd

**THE CITY OF WINNIPEG**  
WATER AND WASTE DEPARTMENT

2015 SEWER RENEWALS  
BY CIPP LINING  
CONTRACT 3  
LANE W OF DOMINION ST  
1ST MH S OF WOLSELEY AV TO NODE AT WOLSELEY AV

SHEET 27 OF 45  
CITY DRAWING NUMBER  
**11099** REV 1