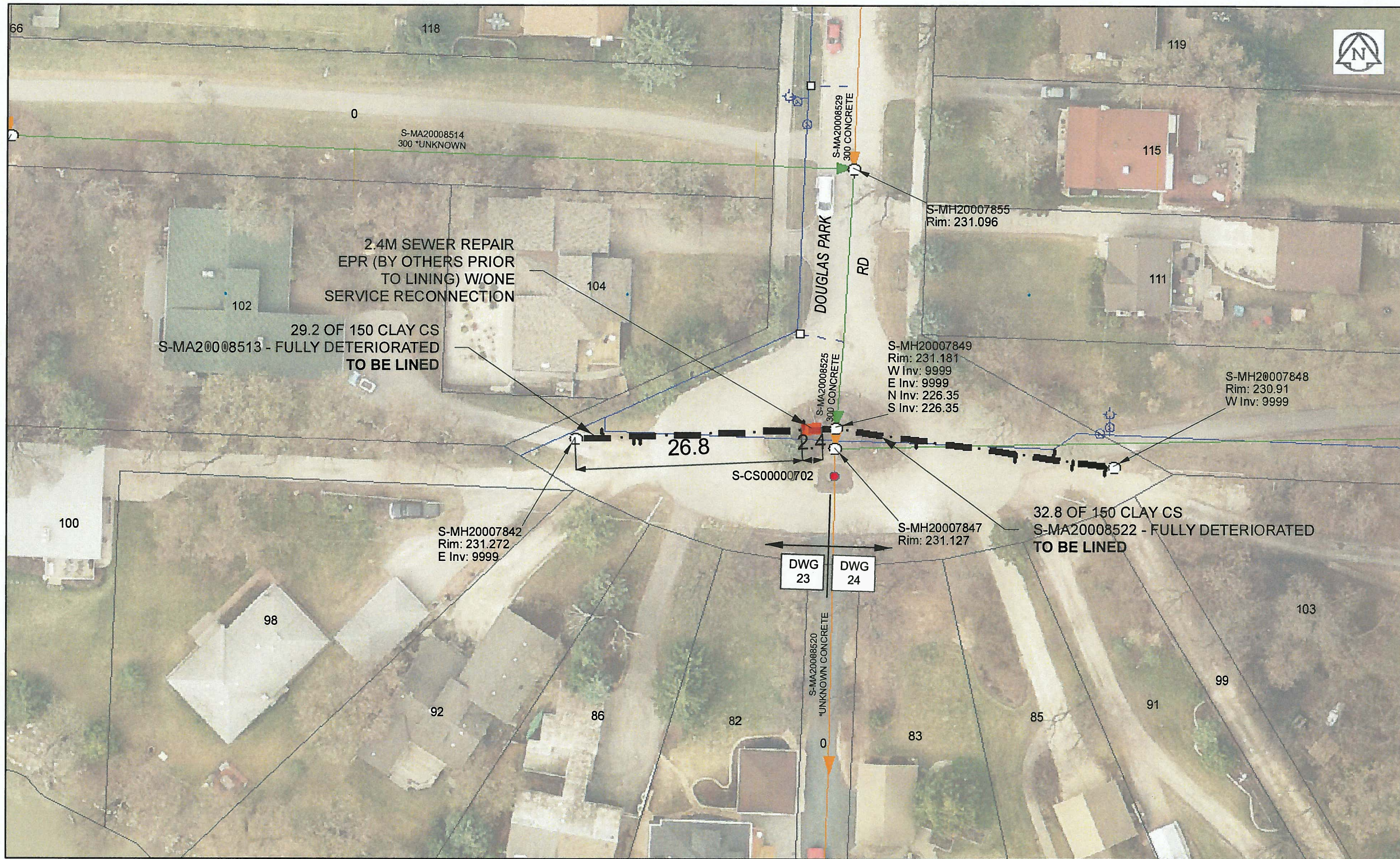


B SIZE 11" X 17" (279mm x 432mm)



**Sewer Junction Information**

(From Video Inspection)

Reference MH	Distance	Size	Clock
S-MH20007842	003.2	150	10
-	006.9	150	03
-	007.6	150	01
-	027.0	150	11

**WARNING**  
 IF POWER EQUIPMENT OR EXPLOSIVES ARE TO BE USED FOR EXCAVATION ON THIS PROJECT, THE CONTRACTOR MUST:  
 1) NOTIFY THE GAS COMPANY OF THE PROPOSED LOCATION OF EXCAVATION.  
 2) TAKE PRECAUTION TO AVOID DAMAGE TO GAS COMPANY INSTALLATIONS.  
 SEE PROVINCIAL REGULATION 140/92 FOR DETAILS

**APEGM**  
 Certificate of Authorization  
 AECOM Canada Ltd.  
 No. 4671 Date: Dec 8, 2015

**METRIC**  
 WHOLE NUMBERS INDICATE MILLIMETRES  
 DECIMALIZED NUMBERS INDICATE METRES  
 0 2.5 5 10 15 20  
 Meters

BID OPPORTUNITY NO. 821-2015

AECOM REVIEW DRFT CHK

FILE NAME: 2015 Lining.pdf SAVED BY: JD

**LOCATION APPROVED UNDERGROUND STRUCTURES**

SUPR. U/G STRUCTURES COMMITTEE	DATE

**NOTE:**  
 LOCATION OF UNDERGROUND STRUCTURES AS SHOWN ARE BASED ON THE BEST INFORMATION AVAILABLE. BUT NO GUARANTEE IS GIVEN THAT ALL EXISTING UTILITIES ARE SHOWN OR THAT THE GIVEN LOCATIONS ARE EXACT. CONFIRMATION OF EXISTENCE AND EXACT LOCATION OF ALL SERVICES MUST BE OBTAINED FROM THE INDIVIDUAL UTILITIES BEFORE PROCEEDING WITH CONSTRUCTION.

Can-Net GPS Reference Station WINN/810

NO.	REVISIONS	YY/MM/DD	BY
0	ISSUED FOR TENDER	15/12/08	JD

**AECOM**

DESIGNED BY	CM	CHECKED BY	ADB
DRAWN BY	JD	APPROVED BY	[Signature]
HOR. SCALE	1:500	RELEASED FOR CONSTRUCTION	[Signature]
VERT. SCALE	N/A	DATE	Dec 9/15

PROFESSIONAL'S SEAL

PROVINCE OF MANITOBA  
 ADB BRAUN  
 Member  
 24453  
 Dec 9/15  
 REGISTERED ENGINEER

CONSULTANT DRAWING NO.  
 60438708-01-C-2015 Lining-R0X.mxd

**THE CITY OF WINNIPEG**  
 WATER AND WASTE DEPARTMENT

2015 SEWER RENEWALS  
 BY CIPP LINING  
 CONTRACT 3  
 DOUGLAS PARK RD (S LEG)  
 MH AT DOUGLAS PARK RD TO 1ST MH W OF DOUGLAS PARK RD

SHEET 23 OF 45  
 CITY DRAWING NUMBER  
**11095** REV 0