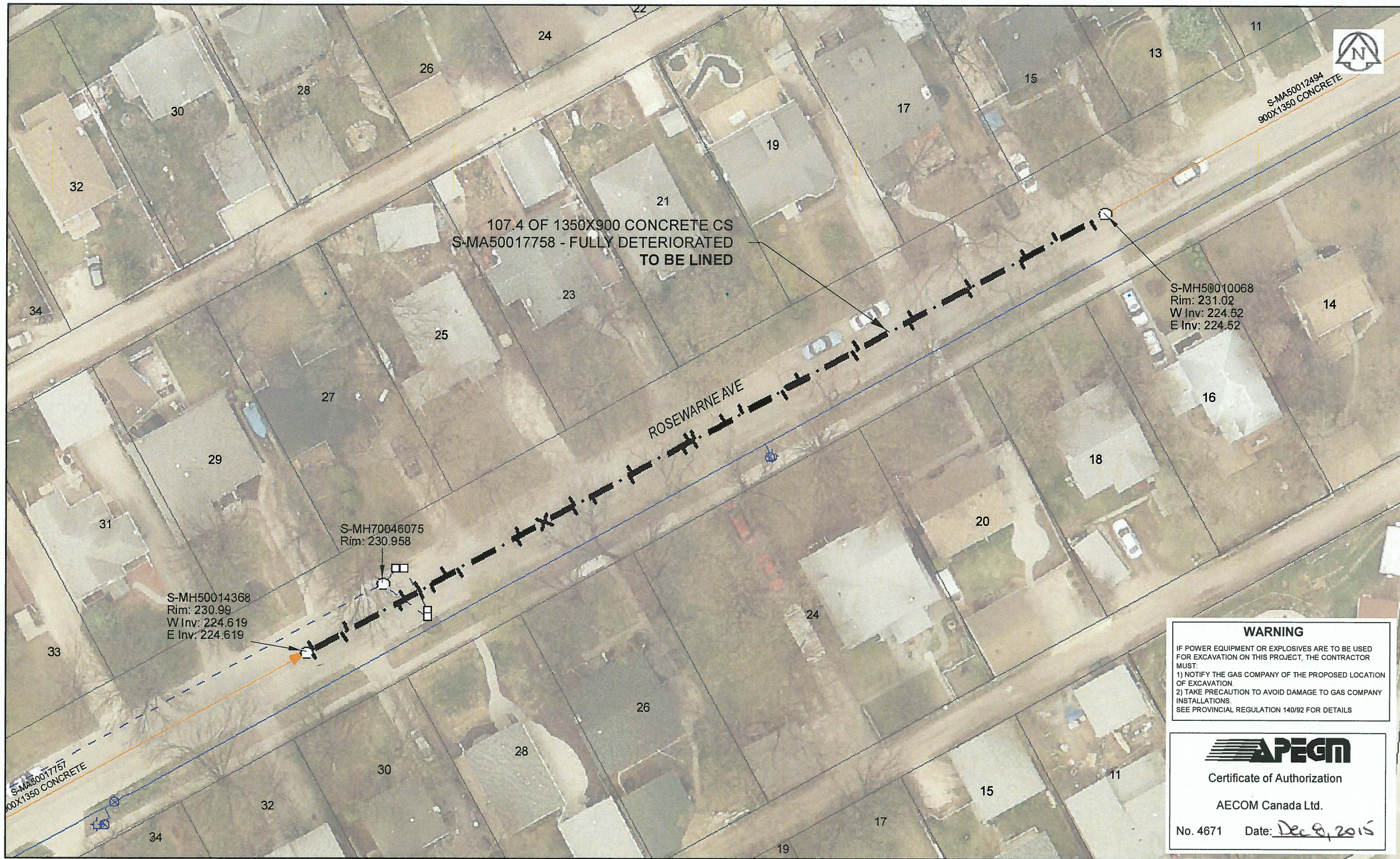


B SIZE 11" X 17" (279mm x 432mm)



**Sewer Junction Information**

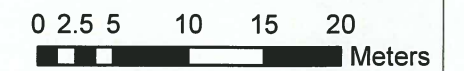
(From Video Inspection)

Reference MH	Distance	Size	Clock
S-MH50014368	000.5	150	01
-	000.8	150	11
-	004.7	150	01
-	005.5	150	10
-	012.2	150	01
-	013.1	150	11
-	015.1	150	01
-	015.1	150	11
-	016.7	150	02
-	018.8	150	11
-	020.4	150	01
-	028.2	150	01
-	028.7	150	11
-	032.0	200	12
-	035.7	150	01
-	036.0	150	11
-	038.3	150	01
-	043.5	150	01
-	043.8	150	11
-	050.6	150	01
-	051.5	150	11
-	052.0	150	01
-	052.3	150	11
-	056.3	150	11
-	058.7	150	11
-	064.0	200	01
-	066.4	150	10
-	073.6	150	01
-	074.3	150	11
-	081.1	150	01
-	081.7	150	11
-	088.9	150	01
-	089.3	150	11
-	096.1	150	01
-	096.8	150	11
-	101.0	200	11
-	105.6	200	01

**WARNING**  
 IF POWER EQUIPMENT OR EXPLOSIVES ARE TO BE USED FOR EXCAVATION ON THIS PROJECT, THE CONTRACTOR MUST:  
 1) NOTIFY THE GAS COMPANY OF THE PROPOSED LOCATION OF EXCAVATION.  
 2) TAKE PRECAUTION TO AVOID DAMAGE TO GAS COMPANY INSTALLATIONS.  
 SEE PROVINCIAL REGULATION 140/92 FOR DETAILS

**APEGM**  
 Certificate of Authorization  
 AECOM Canada Ltd.  
 No. 4671 Date: Dec 8, 2015

**METRIC**  
 WHOLE NUMBERS INDICATE MILLIMETRES  
 DECIMALIZED NUMBERS INDICATE METRES



BID OPPORTUNITY NO. 821-2015

AECOM REVIEW DRFT CHK

FILE NAME: 2015 Lining.pdf SAVED BY: JD

**LOCATION APPROVED UNDERGROUND STRUCTURES**  
 SUPR. U/G STRUCTURES COMMITTEE DATE  
 NOTE:  
 LOCATION OF UNDERGROUND STRUCTURES AS SHOWN ARE BASED ON THE BEST INFORMATION AVAILABLE. BUT NO GUARANTEE IS GIVEN THAT ALL EXISTING UTILITIES ARE SHOWN OR THAT THE GIVEN LOCATIONS ARE EXACT. CONFIRMATION OF EXISTENCE AND EXACT LOCATION OF ALL SERVICES MUST BE OBTAINED FROM THE INDIVIDUAL UTILITIES BEFORE PROCEEDING WITH CONSTRUCTION.

NO.	REVISIONS	YY/MM/DD	BY
0	ISSUED FOR TENDER	15/12/08	JD

**AECOM**

DESIGNED BY	CM	CHECKED BY	ADB
DRAWN BY	JD	APPROVED BY	[Signature]
HOR. SCALE	1:500	RELEASED FOR CONSTRUCTION	[Signature]
VERT. SCALE	N/A	DATE	Dec 8/15

PROFESSIONAL'S SEAL  
 PROVINCE OF MANITOBA  
 BRAUN  
 Member  
 24453  
 Dec 9/15  
 REGISTERED ENGINEER  
 CONSULTANT DRAWING NO.  
 60438708-01-C-2015 Lining-R0X.mxd

**THE CITY OF WINNIPEG**  
 WATER AND WASTE DEPARTMENT

2015 SEWER RENEWALS  
 BY CIPP LINING  
 CONTRACT 3  
 ROSEWARNE AV  
 2ND MH E OF KINGSTON RW TO 3RD MH E OF KINGSTON RW

SHEET 19 OF 45  
 CITY DRAWING NUMBER  
**11091** REV 0