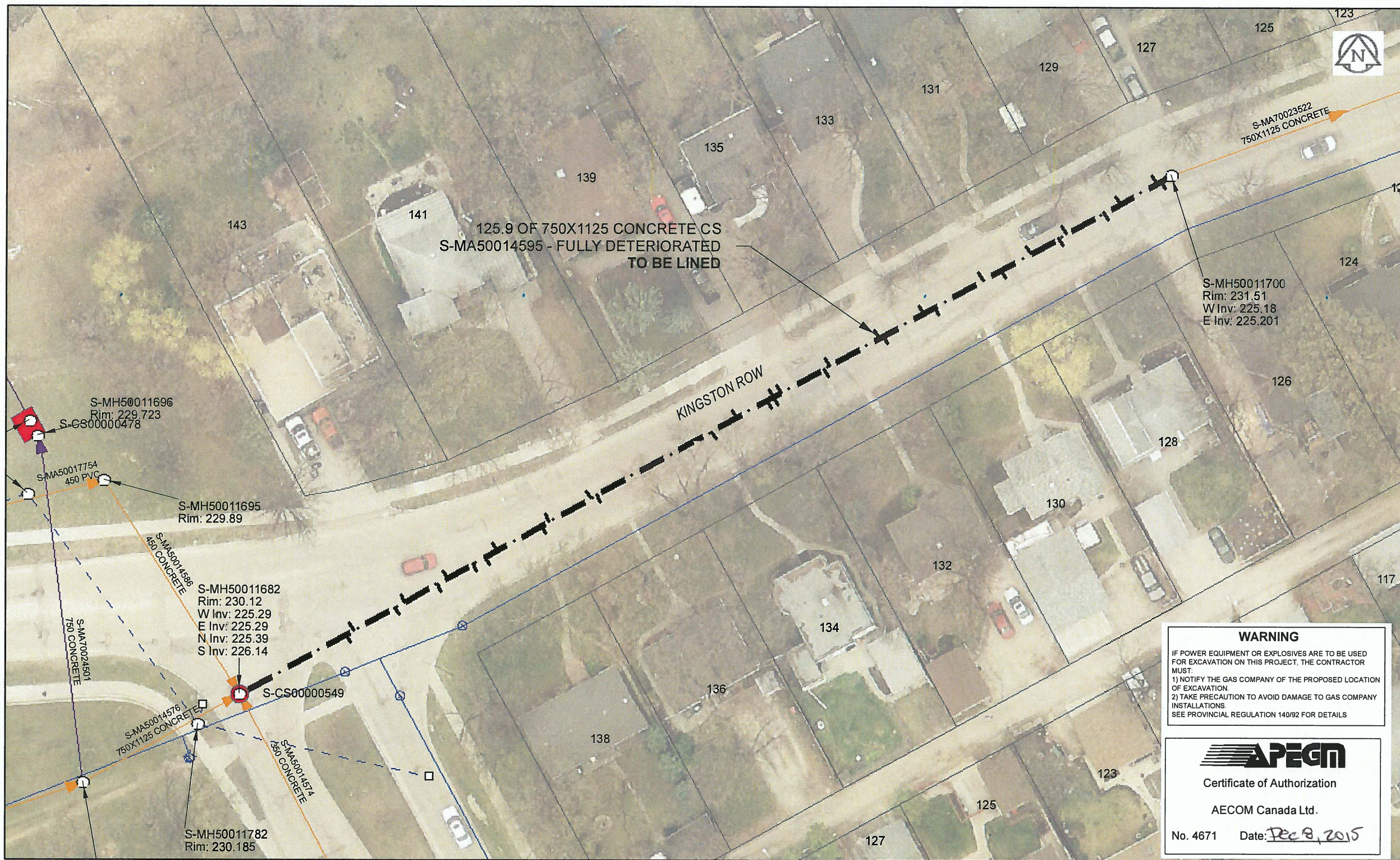


B SIZE 11" X 17" (279mm x 432mm)

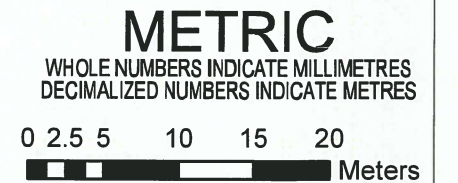


Sewer Junction Information
(From Video Inspection)

Reference MH	Distance	Size	Clock
S-MH50011682	014.4	150	01
-	015.4	150	11
-	021.0	150	01
-	022.3	150	11
-	026.7	150	01
-	028.1	150	11
-	031.5	150	01
-	033.2	250	01
-	034.8	150	11
-	040.8	250	01
-	041.8	150	11
-	047.4	150	11
-	048.2	150	01
-	063.8	150	01
-	067.1	150	11
-	067.2	250	11
-	071.2	150	01
-	072.1	250	01
-	072.1	250	11
-	073.1	150	11
-	078.9	150	01
-	079.6	150	11
-	086.4	150	11
-	087.0	150	01
-	092.5	150	11
-	094.0	150	01
-	100.5	150	11
-	102.9	150	01
-	106.9	150	11
-	110.7	150	01
-	111.7	150	11
-	116.8	150	01
-	118.9	150	11
-	123.9	150	11
-	124.4	150	01

WARNING
IF POWER EQUIPMENT OR EXPLOSIVES ARE TO BE USED FOR EXCAVATION ON THIS PROJECT, THE CONTRACTOR MUST:
1) NOTIFY THE GAS COMPANY OF THE PROPOSED LOCATION OF EXCAVATION
2) TAKE PRECAUTION TO AVOID DAMAGE TO GAS COMPANY INSTALLATIONS
SEE PROVINCIAL REGULATION 140/92 FOR DETAILS

APEGM
Certificate of Authorization
AECOM Canada Ltd.
No. 4671 Date: Dec 8, 2015



BID OPPORTUNITY NO. 821-2015

AECOM REVIEW	DRFT CHK	FILE NAME: 2015 Lining.pdf	SAVED BY: JD
		LOCATION APPROVED UNDERGROUND STRUCTURES	Can-Net GPS Reference Station WINN/810
SUPR. U/G STRUCTURES COMMITTEE		DATE	
NOTE: LOCATION OF UNDERGROUND STRUCTURES AS SHOWN ARE BASED ON THE BEST INFORMATION AVAILABLE. BUT NO GUARANTEE IS GIVEN THAT ALL EXISTING UTILITIES ARE SHOWN OR THAT THE GIVEN LOCATIONS ARE EXACT. CONFIRMATION OF EXISTENCE AND EXACT LOCATION OF ALL SERVICES MUST BE OBTAINED FROM THE INDIVIDUAL UTILITIES BEFORE PROCEEDING WITH CONSTRUCTION.			
NO.	ISSUED FOR TENDER	15/12/08	JD
NO.	REVISIONS	YY/MM/DD	BY

AECOM

DESIGNED BY	CM	CHECKED BY	ADB
DRAWN BY	JD	APPROVED BY	[Signature]
HOR. SCALE	1:500	RELEASED FOR CONSTRUCTION	[Signature]
VERT. SCALE	N/A	DATE	Dec 9/15

PROFESSIONAL'S SEAL
PROVINCE OF MANITOBA
AECOM
BRAUN
Member
24953
REGISTERED ENGINEER
CONSULTANT DRAWING NO.
60438708-01-C-2015 Lining-R0X.mxd

THE CITY OF WINNIPEG
WATER AND WASTE DEPARTMENT

2015 SEWER RENEWALS
BY CIPP LINING
CONTRACT 3
KINGSTON RW
MH AT EDINBURGH ST TO 1ST MH E OF EDINBURGH ST

SHEET 16 OF 45
CITY DRAWING NUMBER
11088 REV 0