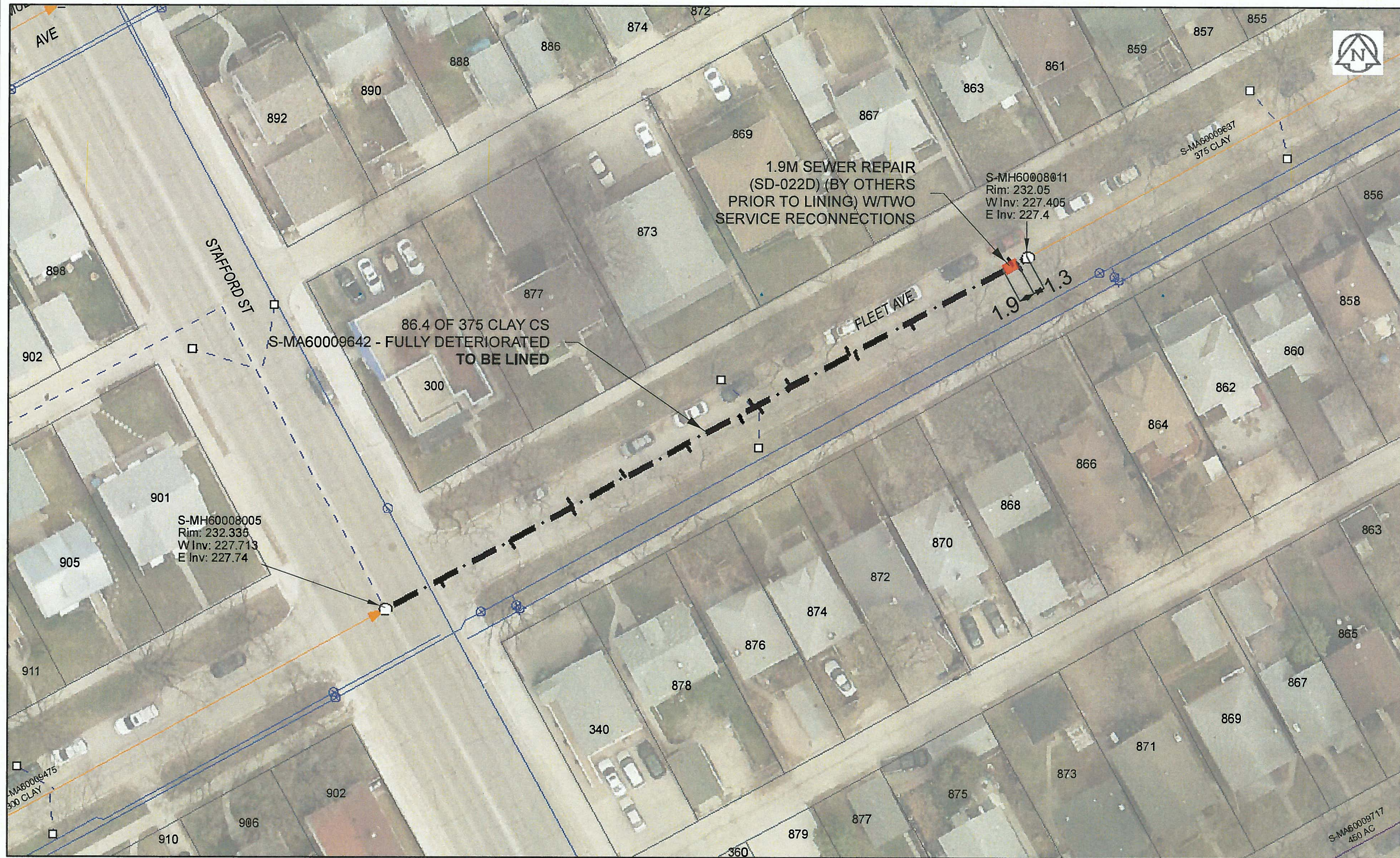


B SIZE 11" X 17" (279mm x 432mm)



Sewer Junction Information

(From Video Inspection)

Reference MH	Distance	Size	Clock
S-MH60008005	007.3	100	02
-	016.8	100	02
-	016.8	100	02
-	025.1	100	02
-	025.2	100	10
-	032.3	100	10
-	040.5	100	02
-	047.7	100	02
-	049.6	100	10
-	050.2	100	01
-	054.6	100	11
-	062.6	100	10
-	063.2	100	02
-	070.7	100	02
-	084.5	100	10
-	085.2	100	02

WARNING

IF POWER EQUIPMENT OR EXPLOSIVES ARE TO BE USED FOR EXCAVATION ON THIS PROJECT, THE CONTRACTOR MUST:
1) NOTIFY THE GAS COMPANY OF THE PROPOSED LOCATION OF EXCAVATION.
2) TAKE PRECAUTION TO AVOID DAMAGE TO GAS COMPANY INSTALLATIONS.
SEE PROVINCIAL REGULATION 140/92 FOR DETAILS



Certificate of Authorization

AECOM Canada Ltd.

No. 4671 Date: Dec 8, 2015

METRIC

WHOLE NUMBERS INDICATE MILLIMETRES
DECIMALIZED NUMBERS INDICATE METRES

0 2.5 5 10 15 20

Meters

BID OPPORTUNITY NO. 821-2015

AECOM REVIEW DRFT CHK

FILE NAME: 2015 Lining.pdf SAVED BY: JD

LOCATION APPROVED UNDERGROUND STRUCTURES

SUPR. U/G STRUCTURES COMMITTEE	DATE

NOTE:
LOCATION OF UNDERGROUND STRUCTURES AS SHOWN ARE BASED ON THE BEST INFORMATION AVAILABLE. BUT NO GUARANTEE IS GIVEN THAT ALL EXISTING UTILITIES ARE SHOWN OR THAT THE GIVEN LOCATIONS ARE EXACT. CONFIRMATION OF EXISTENCE AND EXACT LOCATION OF ALL SERVICES MUST BE OBTAINED FROM THE INDIVIDUAL UTILITIES BEFORE PROCEEDING WITH CONSTRUCTION.

Can-Net GPS Reference Station WINN/810

NO.	ISSUED FOR TENDER	DATE	BY
0	ISSUED FOR TENDER	15/12/08	JD
NO.	REVISIONS	DATE	BY

DESIGNED BY	CM	CHECKED BY	AOB
DRAWN BY	JD	APPROVED BY	[Signature]
HOR. SCALE	1:500	RELEASED FOR CONSTRUCTION	[Signature]
VERT. SCALE	N/A	DATE	Dec 9/15

PROFESSIONAL'S SEAL

CONSULTANT DRAWING NO. 60438708-01-C-2015 Lining-R0X.mxd

THE CITY OF WINNIPEG WATER AND WASTE DEPARTMENT

2015 SEWER RENEWALS BY CIPP LINING CONTRACT 3 FLEET AV

MH AT STAFFORD ST TO 1ST MH W OF WENTWORTH ST

SHEET	12 OF 45
CITY DRAWING NUMBER	11084
REV	0