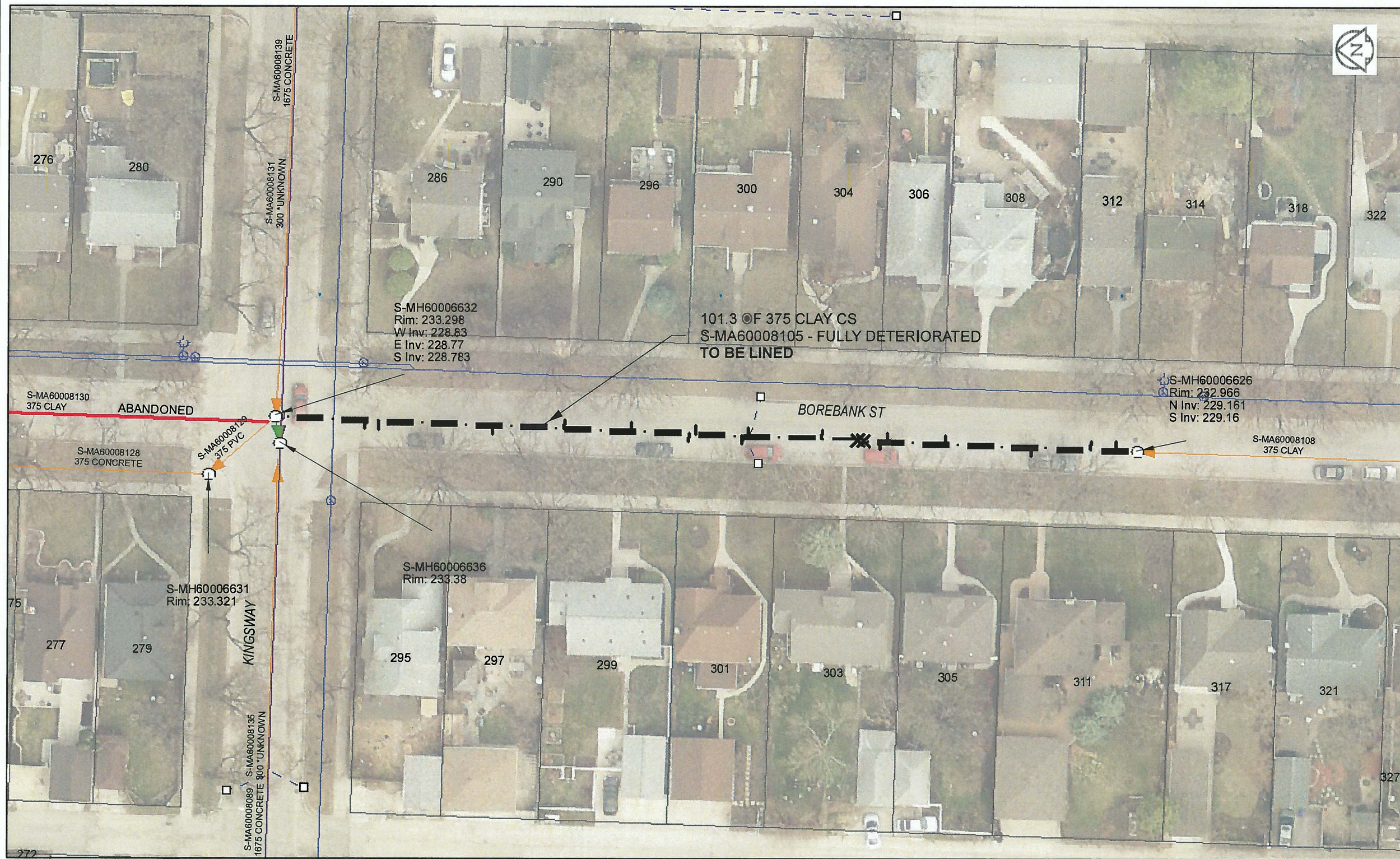


B SIZE 11" X 17" (279mm x 432mm)



Sewer Junction Information

(From Video Inspection)

Reference MH	Distance	Size	Clock
S-MH60006626	002.5	150	02
-	005.5	150	03
-	012.5	150	09
-	022.7	150	02
-	029.6	150	02
-	030.4	150	10
-	032.4	150	12
-	033.1	150	12
-	037.4	150	01
-	046.1	150	03
-	046.8	150	11
-	052.3	150	01
-	053.1	150	11
-	060.0	150	02
-	067.9	150	01
-	076.4	150	11
-	089.9	150	11
-	091.5	150	10

WARNING

IF POWER EQUIPMENT OR EXPLOSIVES ARE TO BE USED FOR EXCAVATION ON THIS PROJECT, THE CONTRACTOR MUST:
 1) NOTIFY THE GAS COMPANY OF THE PROPOSED LOCATION OF EXCAVATION.
 2) TAKE PRECAUTION TO AVOID DAMAGE TO GAS COMPANY INSTALLATIONS.
 SEE PROVINCIAL REGULATION 140/92 FOR DETAILS



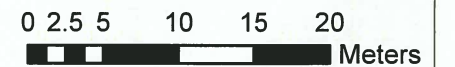
Certificate of Authorization

AECOM Canada Ltd.

No. 4671 Date: Dec 8, 2015

METRIC

WHOLE NUMBERS INDICATE MILLIMETRES
 DECIMALIZED NUMBERS INDICATE METRES



BID OPPORTUNITY NO. 821-2015

AECOM REVIEW DRFT CHK

FILE NAME: 2015 Lining.pdf SAVED BY: JD

LOCATION APPROVED UNDERGROUND STRUCTURES

SUPR. U/G STRUCTURES COMMITTEE DATE
 NOTE:
 LOCATION OF UNDERGROUND STRUCTURES AS SHOWN ARE BASED ON THE BEST INFORMATION AVAILABLE. BUT NO GUARANTEE IS GIVEN THAT ALL EXISTING UTILITIES ARE SHOWN OR THAT THE GIVEN LOCATIONS ARE EXACT. CONFIRMATION OF EXISTENCE AND EXACT LOCATION OF ALL SERVICES MUST BE OBTAINED FROM THE INDIVIDUAL UTILITIES BEFORE PROCEEDING WITH CONSTRUCTION.

Can-Net GPS Reference Station WINN/810			
NO.	ISSUED FOR TENDER	YY/MM/DD	BY
0	ISSUED FOR TENDER	15/12/08	JD



DESIGNED BY	CM	CHECKED BY	ADB
DRAWN BY	JD	APPROVED BY	[Signature]
HOR. SCALE	1:500	RELEASED FOR CONSTRUCTION	[Signature]
VERT. SCALE	N/A	DATE	Dec 9/15

PROFESSIONAL'S SEAL
 PROVINCE OF MANITOBA
 A.P. BRAUN
 Member
 2493
 Dec 9/15
 REGISTERED ENGINEER
 CONSULTANT DRAWING NO.
 60438708-01-C-2015 Lining-R0X.mxd

THE CITY OF WINNIPEG WATER AND WASTE DEPARTMENT

2015 SEWER RENEWALS BY CIPP LINING CONTRACT 3 BOREBANK ST (CL)
 3RD MH N OF GROSVENOR AV TO MH AT KINGSWAY (CL)

SHEET 6 OF 45
 CITY DRAWING NUMBER **11078** REV 0