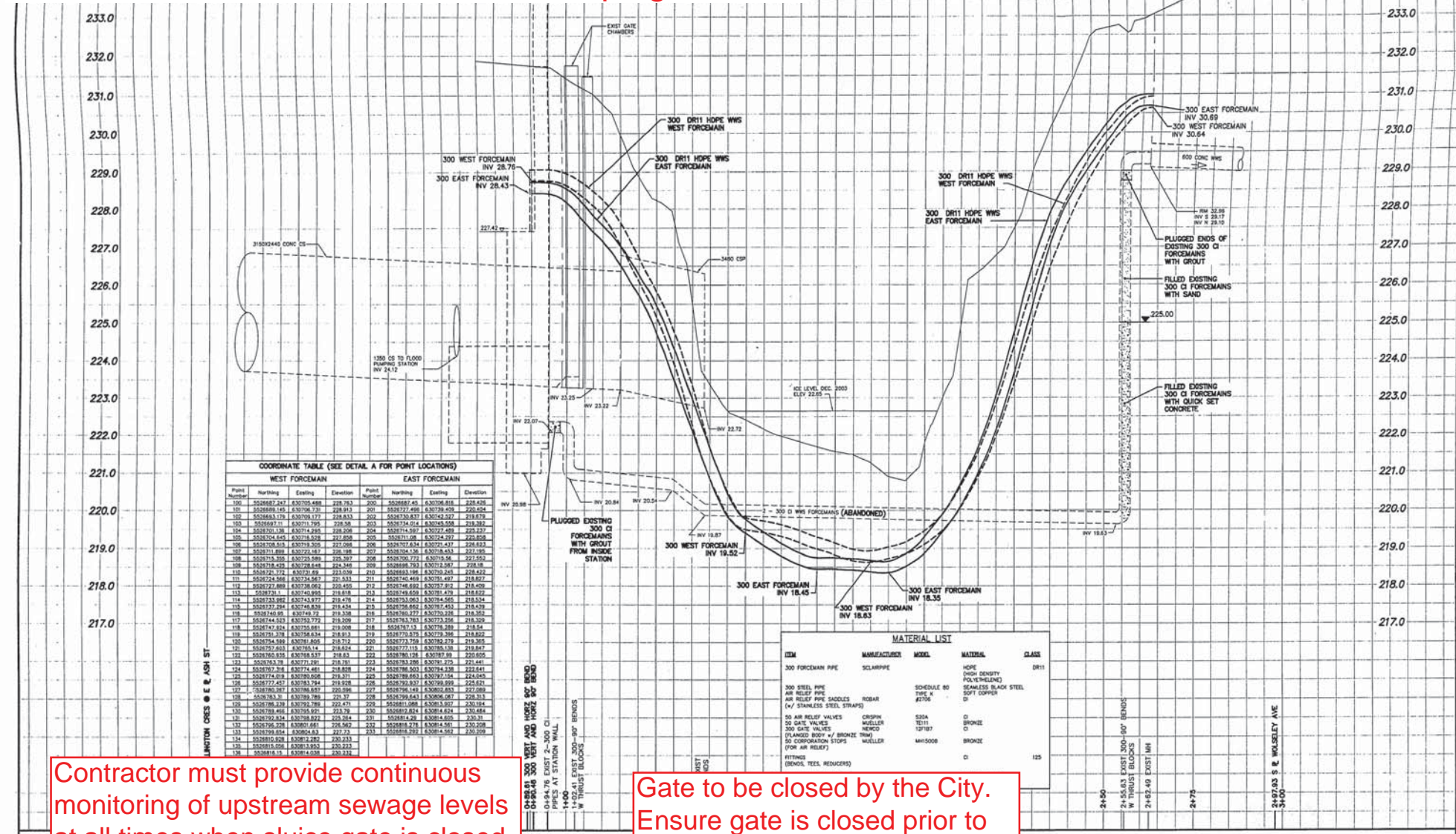


# Flow Control Requirements for S-MA70016029 Ash Combined Sewer Outfall and Pumping Station



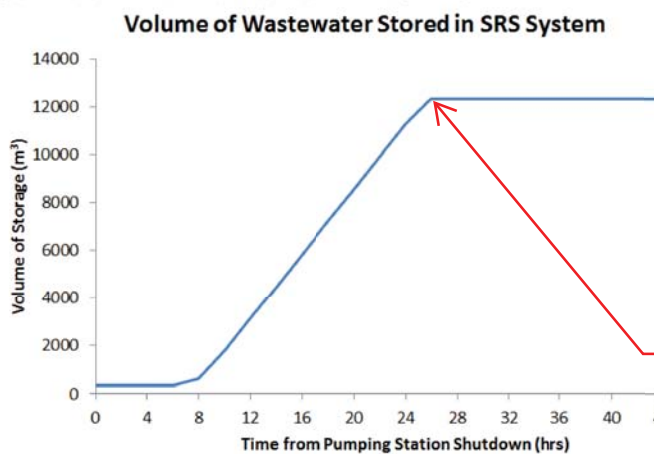
Contractor must provide continuous monitoring of upstream sewage levels at all times when sluice gate is closed. Maximum permissible sewage elevation of 226.5 m.

Gate to be closed by the City. Ensure gate is closed prior to shutting down pump station. Pump station shutdown to be completed by the City.

Pumping Station

Weir

S-MA70016029



Wastewater stored above this volume capable of dewatering via Ash pump station.

Contractor to pump out sewage trapped between weir and sluice gate immediately after drawdown of system and prior to opening of the sluice gate. Sewage to be pumped to the upstream side of the weir.

THE CITY OF WINNIPEG  
WATER AND WASTE DEPARTMENT

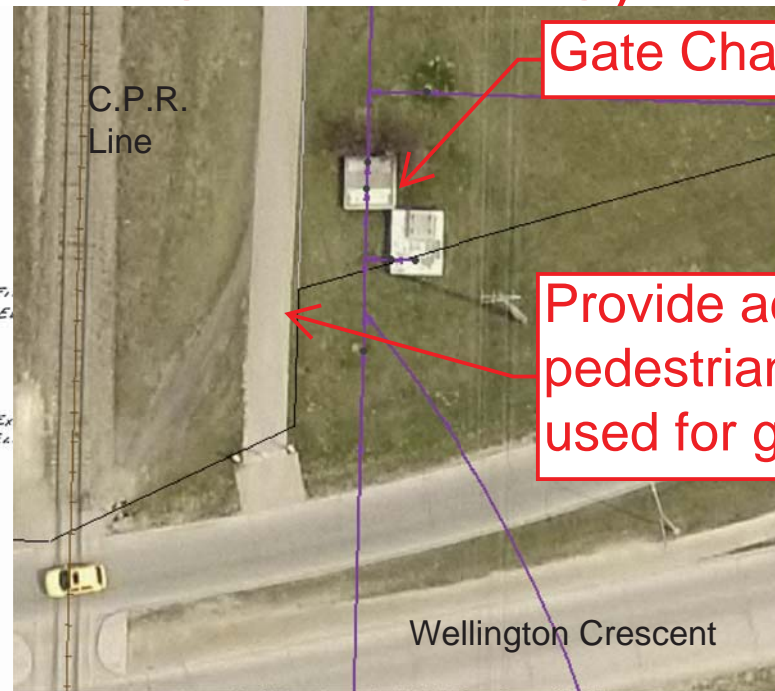
ASH WASTEWATER PUMPING STATION  
REPLACEMENT OF RIVER  
CROSSING FORCEMAINS  
PLAN AND PROFILE  
ASH PUMPING STATION TO  
WOLSELEY AVENUE

ENGINEER'S SEAL  
TWO APPROVED BY  
WKT/RWK APPROVED BY  
DATE 2003 12 05

FILE NAME: 05353.dwg  
PLOT DATE: 2004 04 29

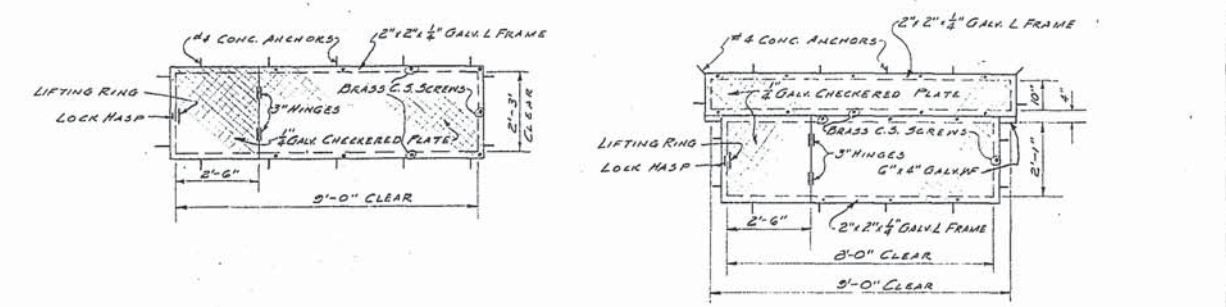
SHEET 1 OF 2  
CITY DRAWING NUMBER  
05353

# Flow Control Requirements for S-MA70016029 Renfrew Storm Relief System Gate Chamber Detail

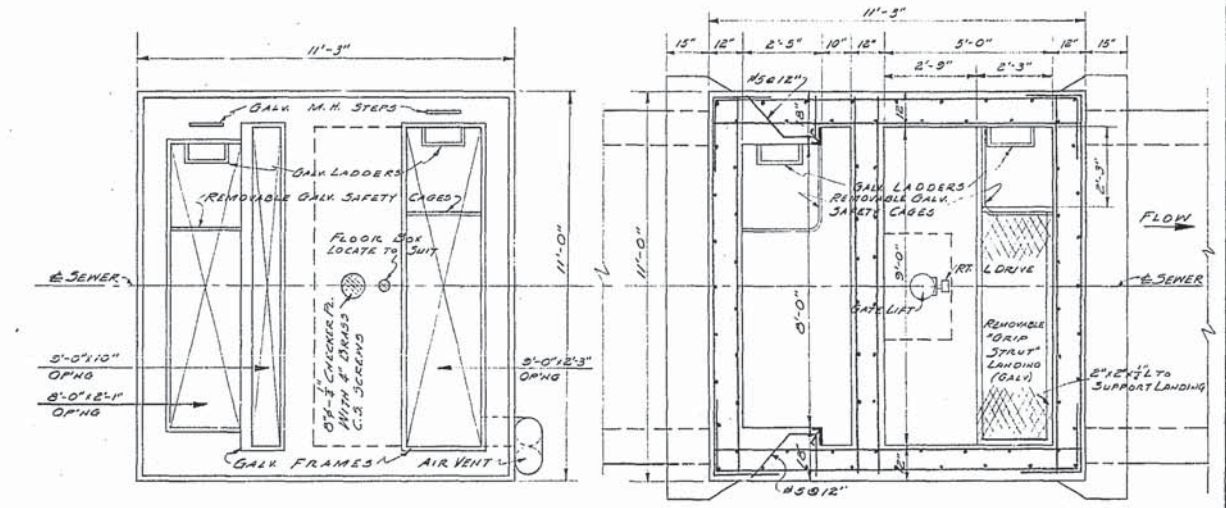


Gate Chamber Building

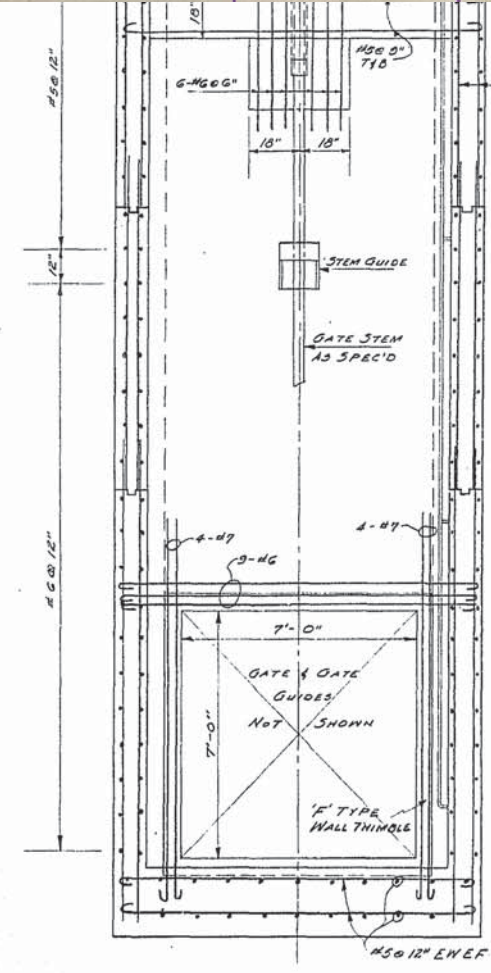
Provide adequate signage for pedestrians on multiuse path if used for gate chamber access



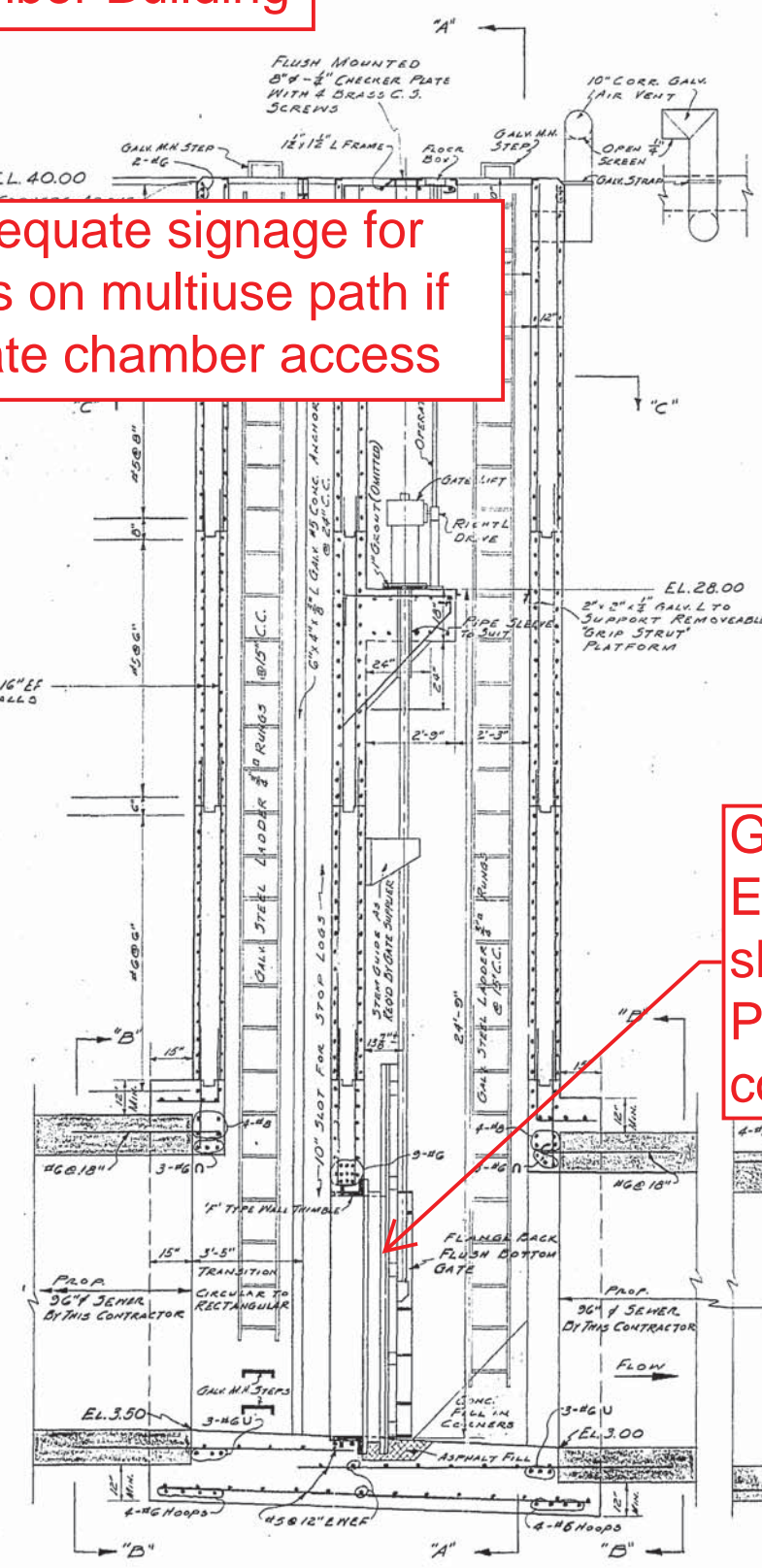
HATCH COVERS & FRAMES  
NOTE: ALL COVERS TO BE FLUSH WITH TOP OF CONCRETE AT EL. 40.00



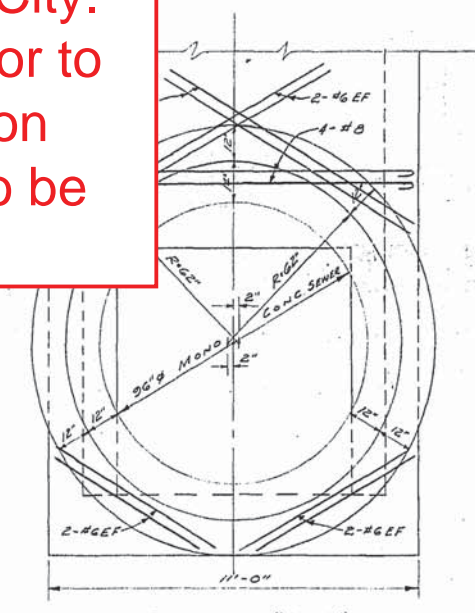
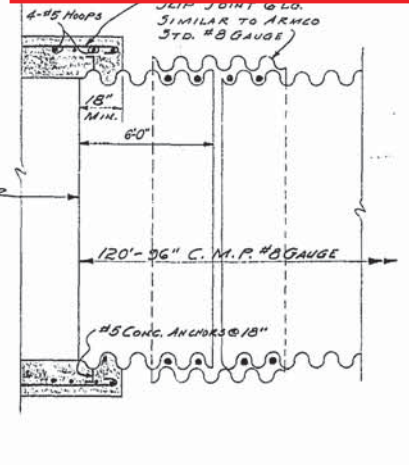
Gate to be closed by the City.  
Ensure Gate is closed prior to shutting down pump station  
Pump station shutdown to be completed by the City.



SECTION "A-A"



SECTIONAL ELEVATION



SECTION "B-B"  
NOTE: ALL STEEL 2 1/2" CLEAR

REVISED AS CONSTRUCTED  
BY W.S. DATE JAN. 25/66  
CHECKED BY DATE 25 NOV 66

DIST. CODE # 290-022-360

NOTE: DIMENSIONING ACCURATE 1/8"

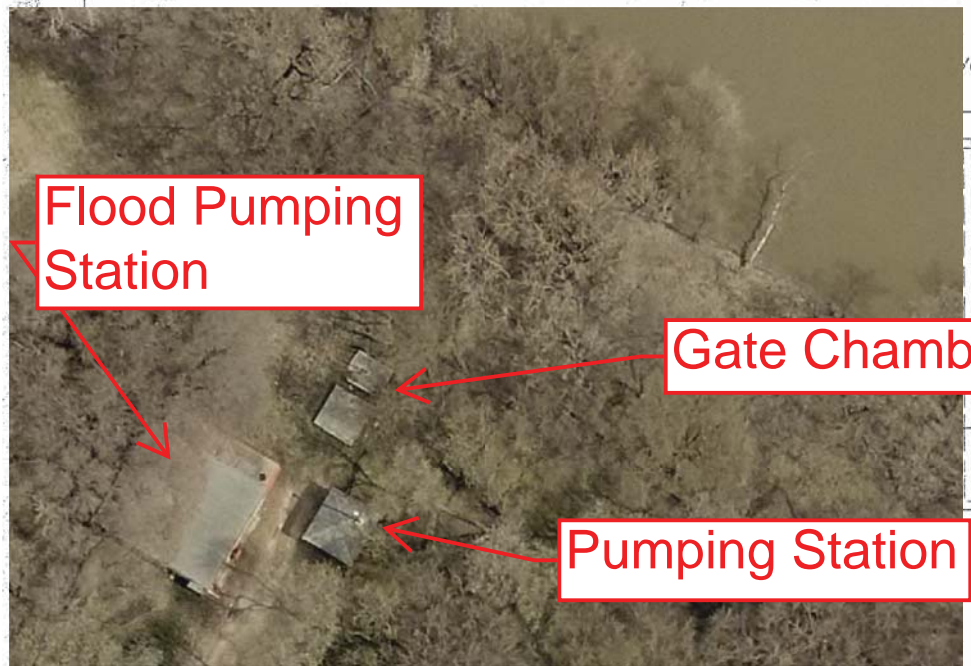
NOTE:  
LOCATION DRWG  
SEE DRWG. No. 5C15557  
FILE B-7-K  
C.E.D. 65-64  
P.D. 64-124



DETAILS OF RENFREW RELIEF  
GATE CHAMBER

CITY OF WINNIPEG  
ENGINEERING DEPARTMENT  
W. D. HURST, CITY ENGINEER  
J. B. STFIOWSKI, DEPUTY CITY ENGINEER  
DRAWN BY H.E.R. DATE 25-11-64  
CHECKED BY DATE 25-11-64  
APPROVED BY DATE 25-11-64  
SCALE 3/8" = 1'-0"  
DRAWING NO. 5C15558

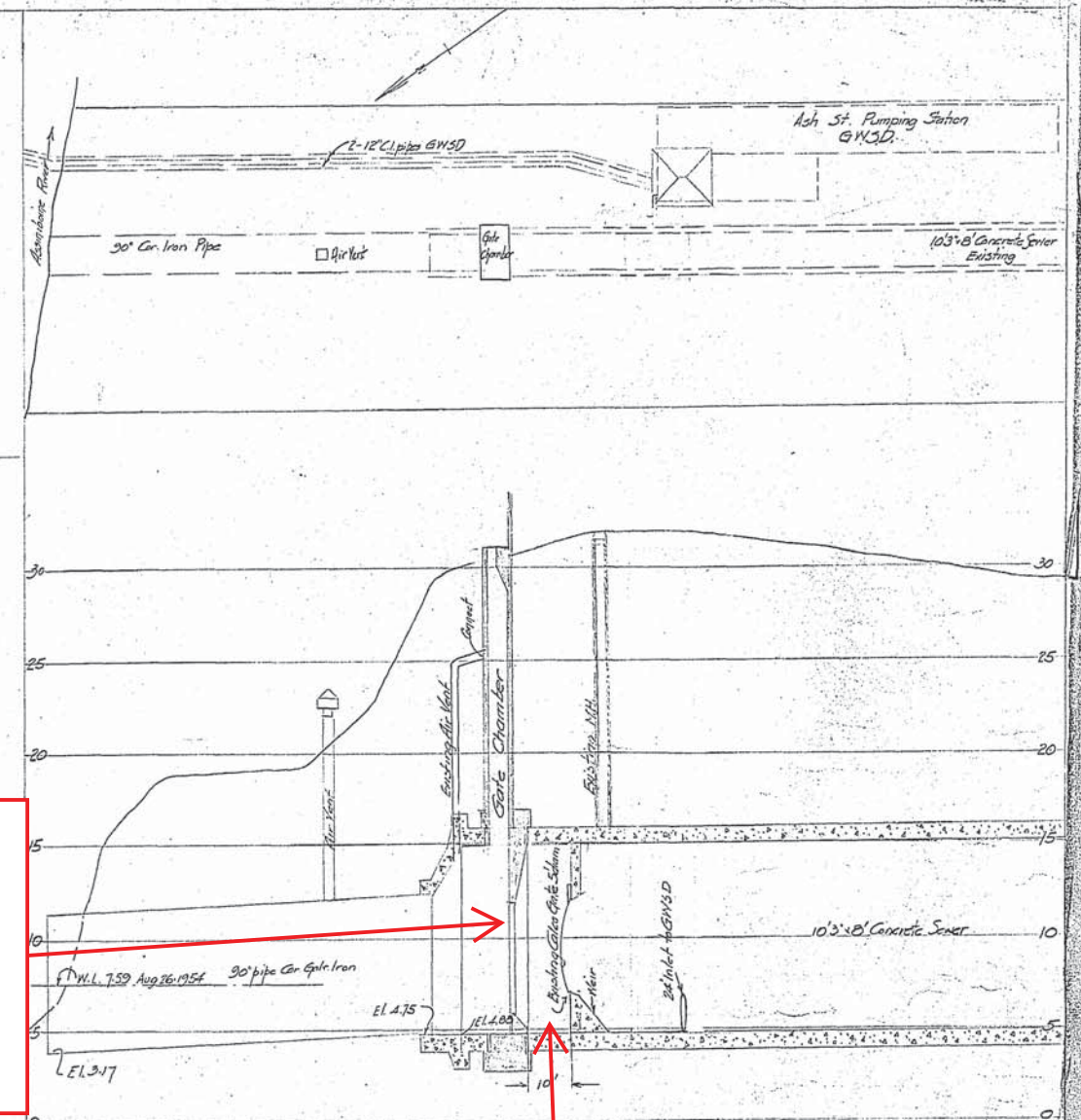
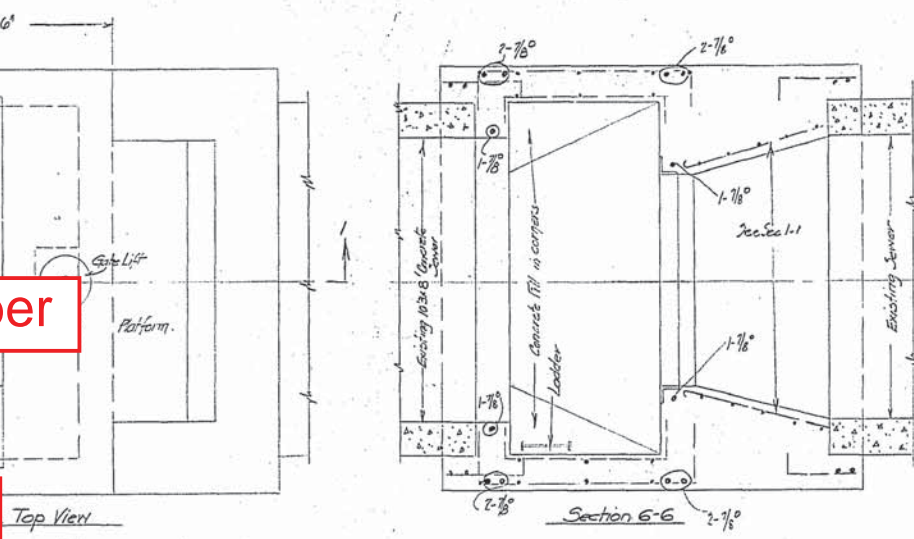
# Flow Control Requirements for S-MA70016029 Ash Combined Sewer Outfall Gate Chamber Detail



Flood Pumping Station

Gate Chamber

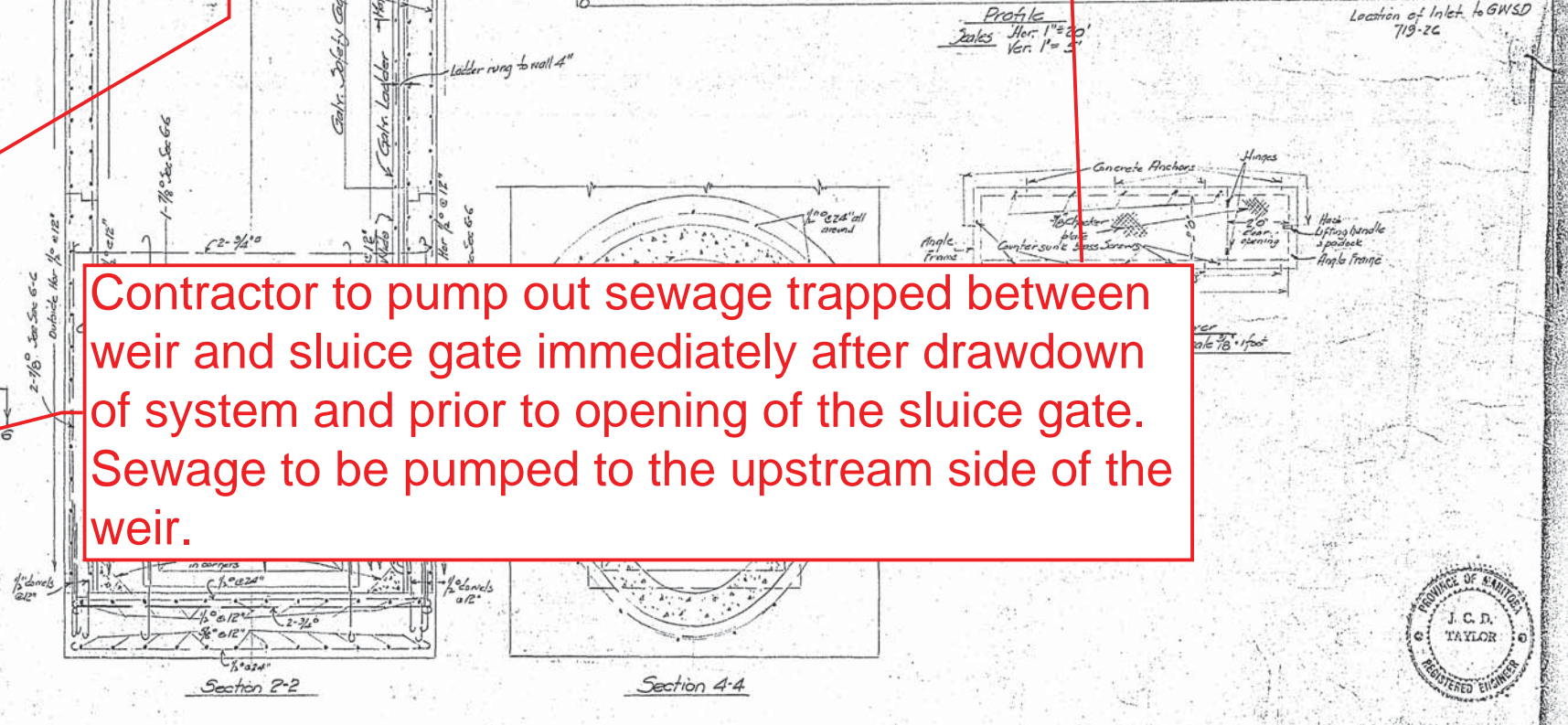
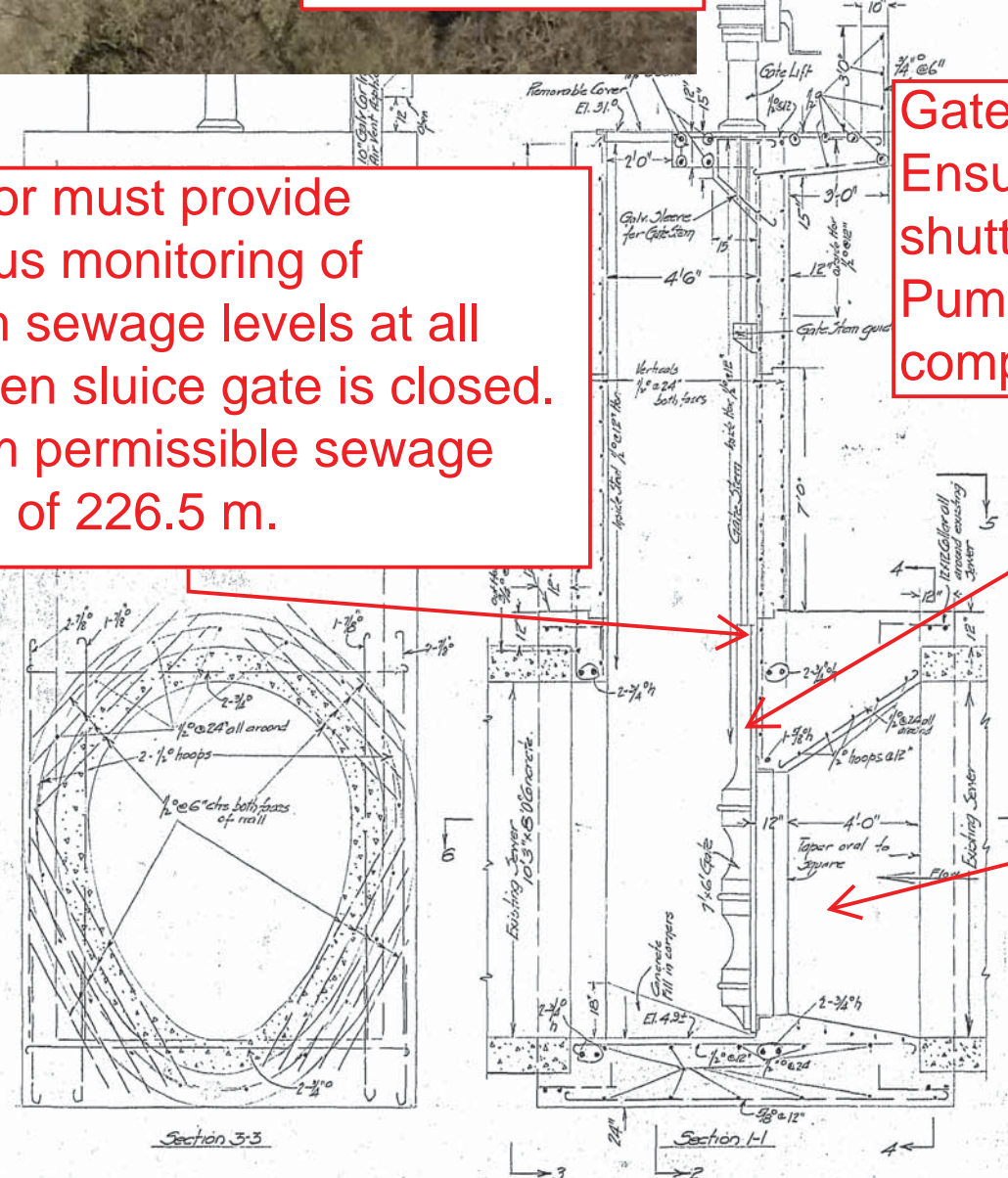
Pumping Station



Contractor must provide continuous monitoring of upstream sewage levels at all times when sluice gate is closed. Maximum permissible sewage elevation of 226.5 m.

Gate to be closed by the City. Ensure Gate is closed prior to shutting down pump station. Pump station shutdown to be completed by the City.

Contractor to pump out sewage trapped between weir and sluice gate immediately after drawdown of system and prior to opening of the sluice gate. Sewage to be pumped to the upstream side of the weir.



FLOOD GATE  
ASH STREET

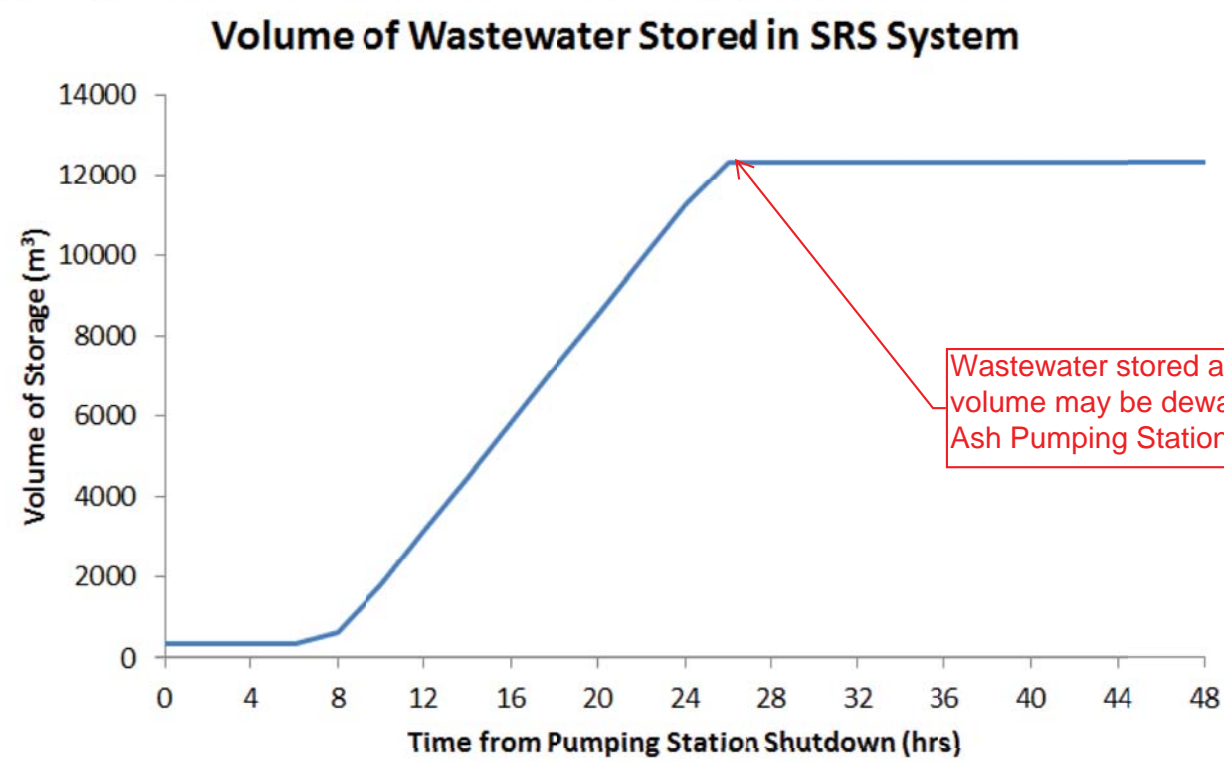
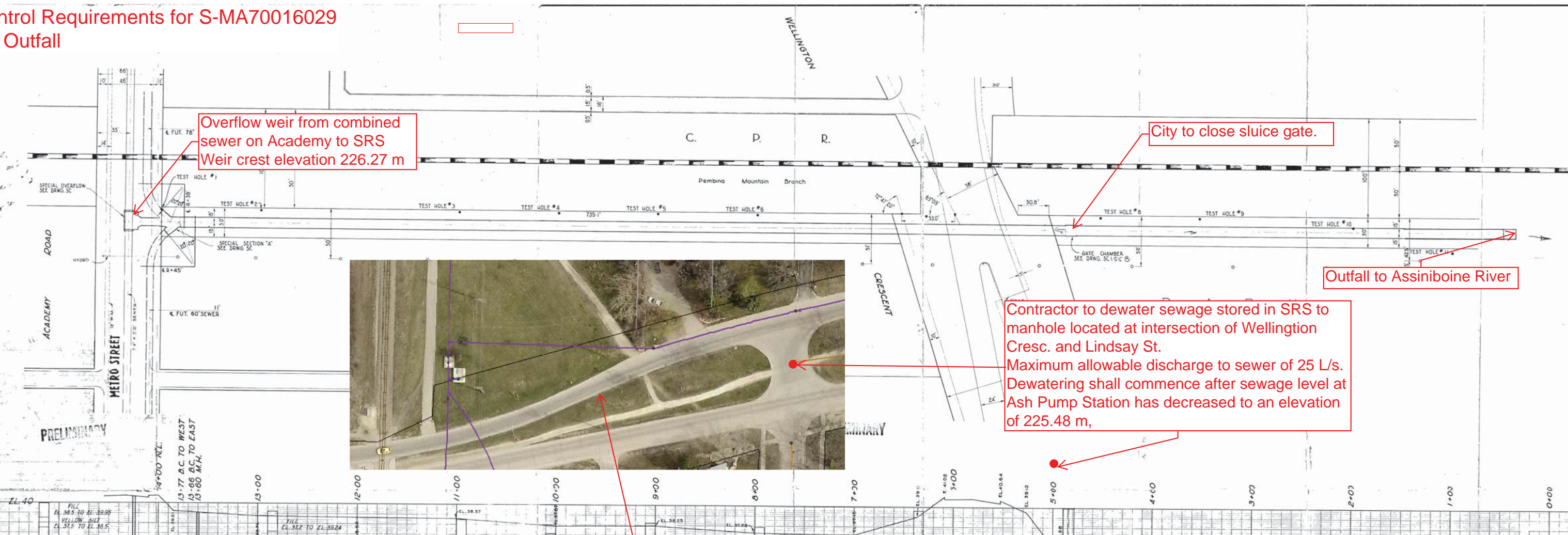
CITY OF WINNIPEG  
ENGINEERING DEPARTMENT  
W. D. HURST, CITY ENGINEER  
A. J. S. TAUNTON, DEPUTY CITY ENGINEER

DRAWN BY: [Signature] DATE: [Date]  
TRACED BY: [Signature]  
CHECKED BY: [Signature]  
APPROVED: [Signature]

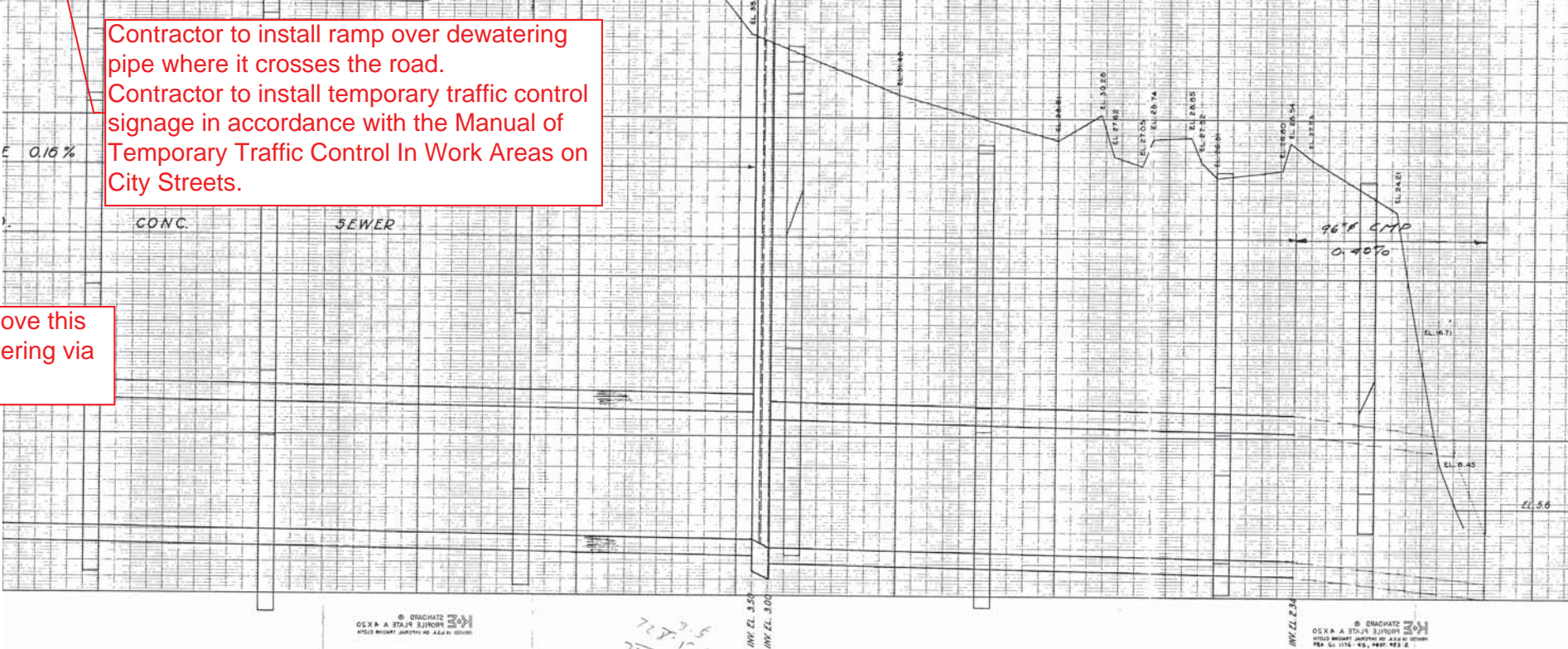
SCALE: 3/8" = 1'-0"  
DRAWING NO. 684-1  
R-118

PROVINCE OF MANITOBA  
J. C. R. TAYLOR  
REGISTERED ENGINEER

**Flow Control Requirements for S-MA70016029  
Renfrew Outfall**



Contractor to install ramp over dewatering pipe where it crosses the road.  
Contractor to install temporary traffic control signage in accordance with the Manual of Temporary Traffic Control In Work Areas on City Streets.



727.5  
1.1  
751.0