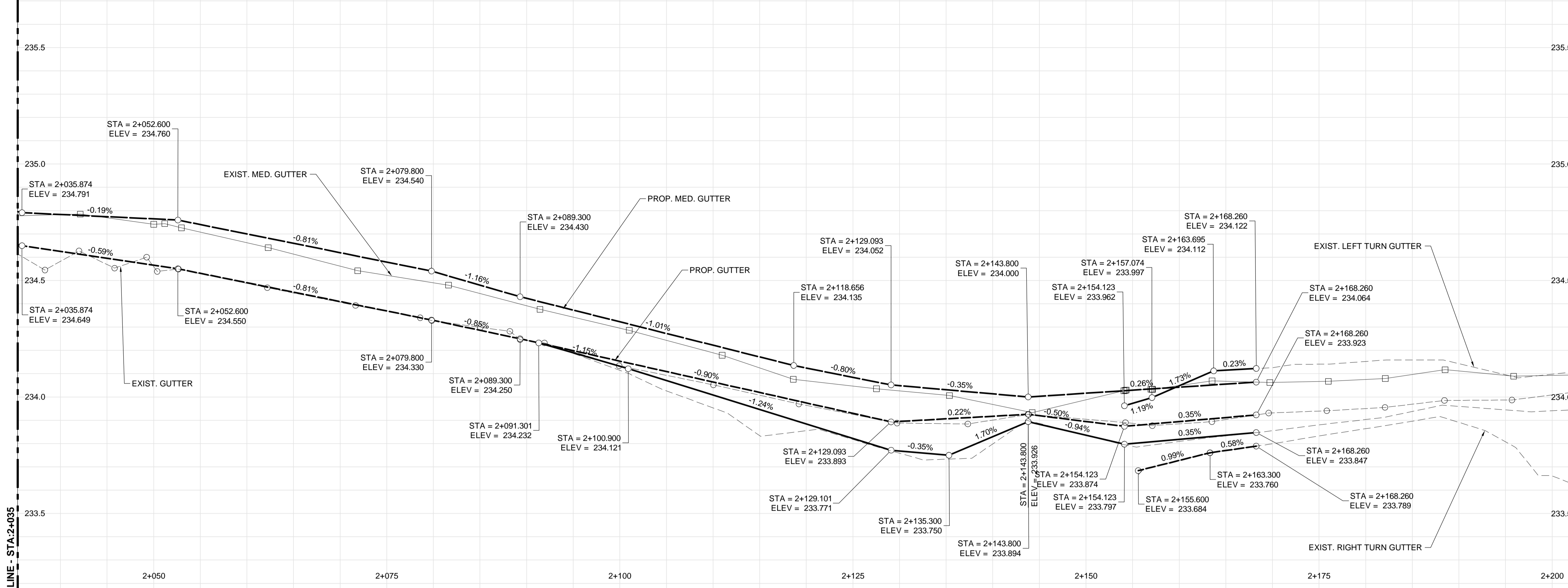
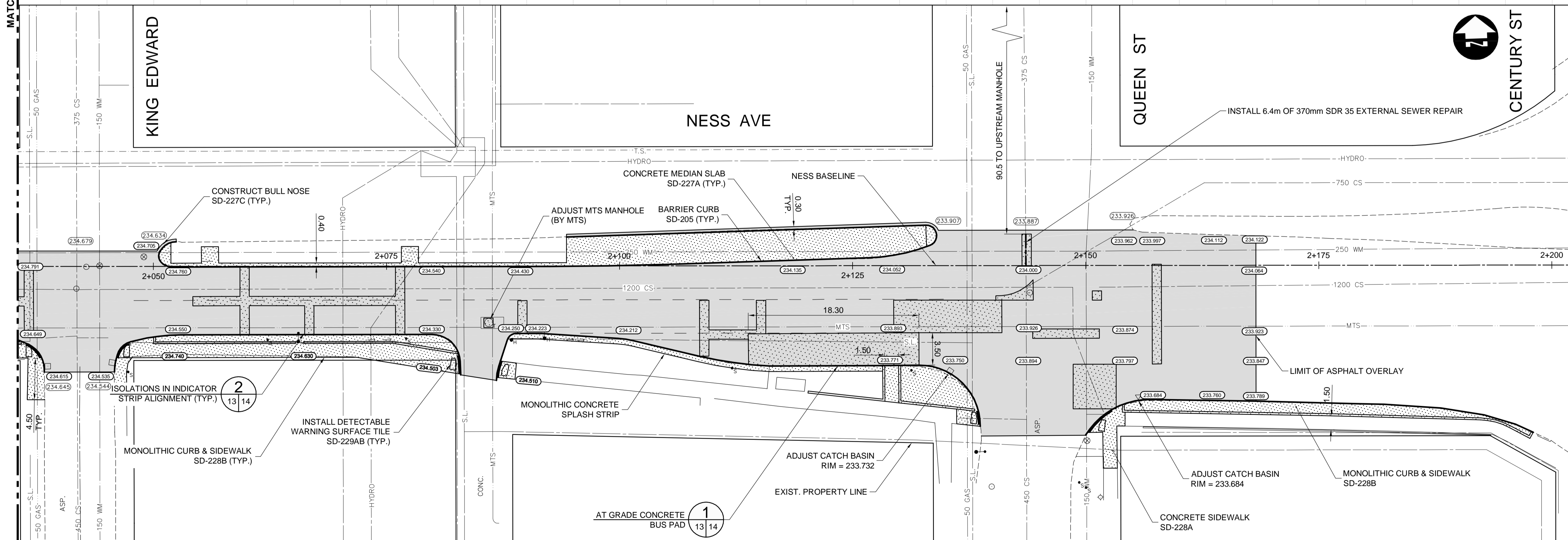


NESS AVE EASTBOUND



- CONSTRUCTION NOTES:**
- ALL DIMENSIONS ARE TO BACK OF CURB.
 - ISOLATE MISCELLANEOUS ITEMS IN NEW CONCRETE WORKS AS PER SD-228C OR DETAIL 2 IF ALIGNED WITH PAVING BAND.
 - LEGAL PLAN AND UNDERGROUND INFORMATION FROM CITY OF WINNIPEG LBIS. CONTRACTOR TO VERIFY ALL UNDERGROUNDS IN THE FIELD.
 - CONTRACTOR TO TAKE PRECAUTIONARY STEPS TO AVOID DAMAGE FROM CONSTRUCTION ACTIVITIES TO TREES WITHIN THE LIMITS OF CONSTRUCTION.
 - LOCATION OF EXISTING SERVICES TO BE CONFIRMED IN THE FIELD BY THE CONTRACTOR.
 - INSTALL CB LEADS AT MIN. 1.0% SLOPE OR AS DIRECTED BY CONTRACT ADMINISTRATOR.
 - LIMITS OF SIDEWALK RENEWAL TO BE FINALIZED IN THE FIELD BY THE CONTRACT ADMINISTRATOR.
 - LIMITS OF BOULEVARD GRADING TO BE FINALIZED IN THE FIELD BY THE CONTRACT ADMINISTRATOR.
 - MONOLITHIC CURB AND SIDEWALK SP-228B REVEAL HEIGHT IS 150 mm UNLESS OTHERWISE DIRECTED BY THE CONTRACT ADMINISTRATOR.
 - SEE SHEET 14 FOR TYPICAL CROSS SECTIONS AND DETAILS.
 - PLANE EXISTING ASPHALT OVERLAY WITHIN LIMITS OF CONSTRUCTION TO DEPTH INDICATED BY THE CONTRACT ADMINISTRATOR.
 - ADJUST ALL WATER VALVES, MANHOLES, AND DRAINAGE INLETS WITHIN LIMITS OF CONSTRUCTION.



METRIC
WHOLE NUMBERS INDICATE MILLIMETRES
DECIMALIZED NUMBERS INDICATE METRES

WARNING
IF POWER EQUIPMENT OR EXPLOSIVES USED FOR EXCAVATION ON THIS PROJECT THE CONTRACTOR:

- NOTIFY THE GAS COMPANY OF THE PROPOSED LOCATION OF EXCAVATION.
- TAKE PRECAUTION TO AVOID DAMAGE TO GAS COMPANY INSTALLATIONS SEE PROVINCIAL REGULATION 210/72 FOR DETAILS.
- OBTAIN EXCAVATION PERMITS PRIOR TO CONSTRUCTION.

APEGM
Certificate of Authorization
Dillon Consulting Limited (MB)
No. 1789 Date: 01/12/2015

EXISTING	LEGEND-PLAN	PROPOSED	EXISTING	LEGEND-PLAN	PROPOSED	EXISTING	LEGEND-PROFILE	PROPOSED
150 WM	WATERMAIN	150 WM	HYDRO	HYDRO	150 WM	WATERMAIN	150 WM	
300 LDS	HYDRANT VALVE	300 LDS	MTS	M.T.S.	300 LDS	HYDRANT VALVE	300 LDS	
250 WWS	LAND DRAINAGE SEWER	250 WWS		CONCRETE	250 WWS	WASTE WATER SEWER	250 WWS	
	MANHOLE			ASPHALT		LAND DRAINAGE SEWER		
	CATCH BASIN			PLANING		WASTE WATER SEWER		
	CURB INLET			SIDEWALK		PROFILE		
	JUNCTIONS			PAVING STONES		NORTH/WEST GUTTER		
	CULVERT			PARTIAL DEPTH REPAIR		SOUTH/EAST GUTTER		
100 GAS	GAS	100 GAS		PROPERTY LINE		NORTH/WEST DITCH		
				DRAINAGE ARROW		SOUTH/EAST DITCH		
				CURB RAMP		SPOT GRADE		

UNDERGROUND STRUCTURES

SUPPLY, U/G STRUCTURES DATE

LOCATION OF UNDERGROUND STRUCTURES AS SHOWN ARE BASED ON THE BEST INFORMATION AVAILABLE, BUT NO GUARANTEE IS GIVEN THAT ALL EXISTING UTILITIES ARE SHOWN OR THAT THE GIVEN LOCATIONS ARE EXACT. CONFIRMATION OF EXISTENCE AND EXACT LOCATION OF ALL SERVICES MUST BE OBTAINED FROM THE INDIVIDUAL UTILITIES BEFORE PROCEEDING WITH CONSTRUCTION.

NO.	REVISIONS	DATE	BY
1	ISSUED FOR TENDER	01/12/15	DBW

DESIGNED BY	PMW
DRAWN BY	PMW
CHECKED BY	TS
APPROVED BY	DBW
HOR. SCALE	1:250
VERTICAL	1:10
DATE	01/12/2015

ENGINEER'S SEAL
PROVINCE OF MANITOBA
ORIGINAL STAMPED BY
D.B. WIEBE
01/12/2015
Member 22480
REGISTERED PROFESSIONAL ENGINEER

THE CITY OF WINNIPEG
PUBLIC WORKS DEPARTMENT

Winnipeg

NESS AVE E/B REHABILITATION
OVERDALE ST TO QUEEN ST

PLAN-PROFILE
STA: 2+035 TO 2+195

CITY DRAWING NUMBER
P-3465-13

SHEET 13 OF 17

CONSULTANT DRAWING NUMBER