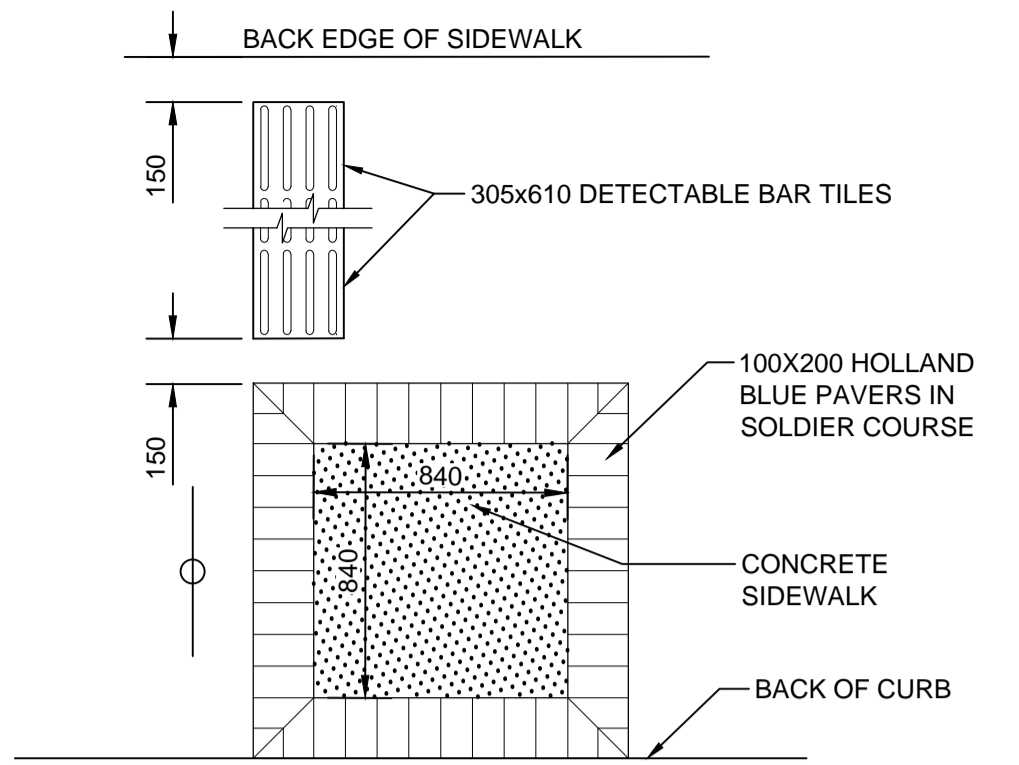
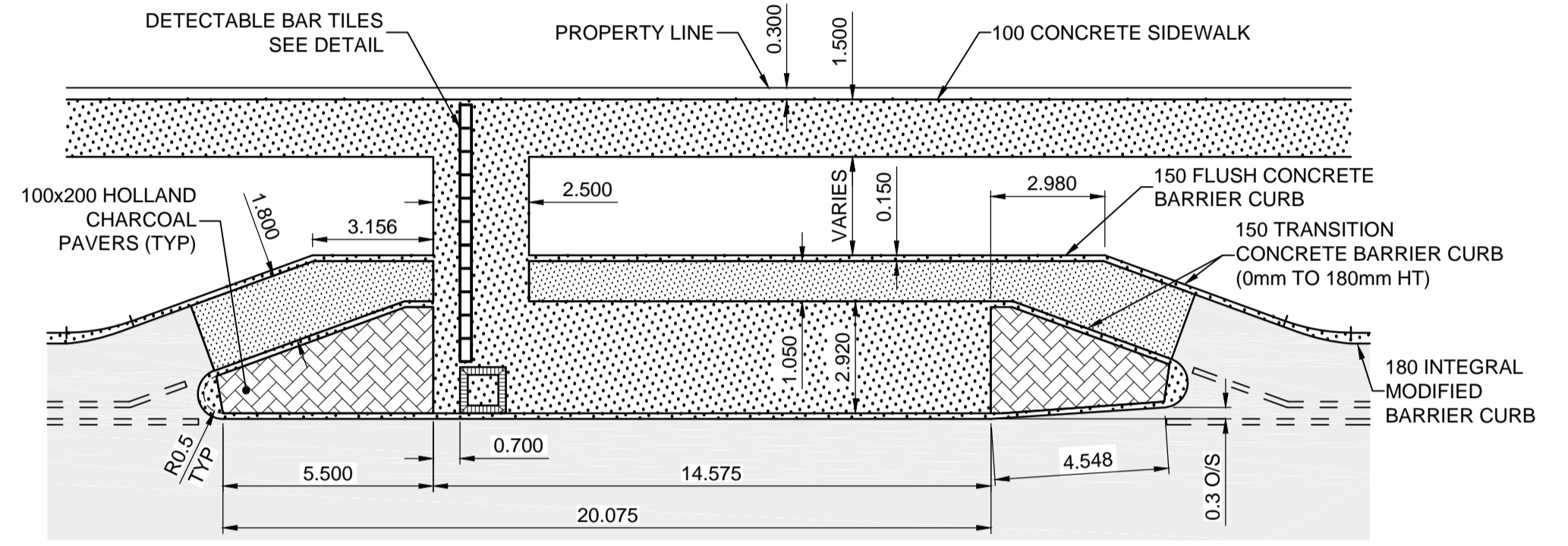


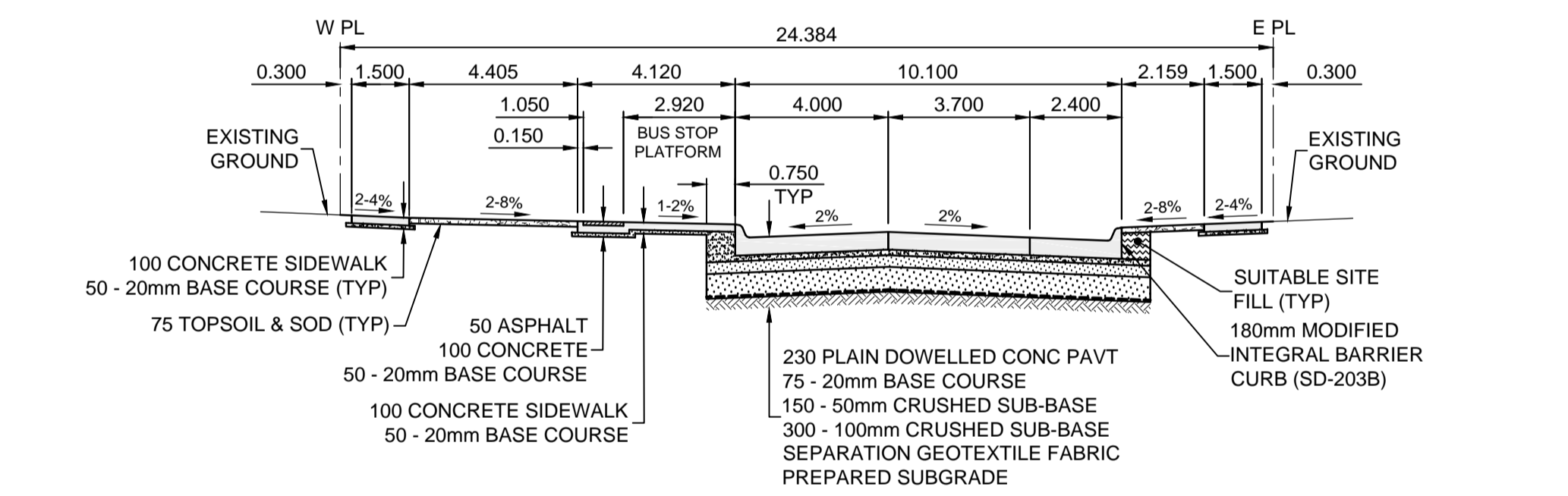
- NOTES**
- ADJUST MH AND CB RIMS TO NEW GRADES.
 - LAMP STANDARDS, HYDRO POLES, AND ANCHORS THAT REQUIRE TEMPORARY SUPPORT, REMOVAL OR REPLACEMENT, TO BE DONE SO AT THE EXPENSE OF THE CONTRACTOR AS NECESSARY.
 - CONTRACTOR TO REGRADE/RENEW EXISTING PRIVATE SIDEWALKS TO LIMITS AS SHOWN. SIDEWALKS TO BE RENEWED WITH CONCRETE UNLESS NOTED OTHERWISE.
 - CONTRACTOR TO TAKE PRECAUTIONARY STEPS TO PROTECT EXISTING TREES WITHIN THE LIMITS OF CONSTRUCTION FROM DAMAGE FROM CONSTRUCTION ACTIVITIES AS OUTLINED IN THE SPECIFICATIONS.
 - CONTRACTOR TO CONFIRM THE LOCATION OF ALL UTILITIES/SERVICES IN THE FIELD PRIOR TO CONSTRUCTION.
 - IN GENERAL, PAVEMENT AND SIDEWALK AREAS TO BE REMOVED, MATCH RECONSTRUCTION LIMITS.
 - CB SD-024 OFFSETS ARE DIMENSIONED TO BOC. CB SD-025 OFFSETS ARE DIMENSIONED O/C.
 - REFER TO SPECIFICATIONS FOR STAGING REQUIREMENTS.
 - MODIFIED BARRIER CURB & GUTTER INLET FRAME & COVER TF-122.
 - ADD 200.00mm TO ABBREVIATED ELEVATIONS TO OBTAIN GEODETIC ELEVATIONS.



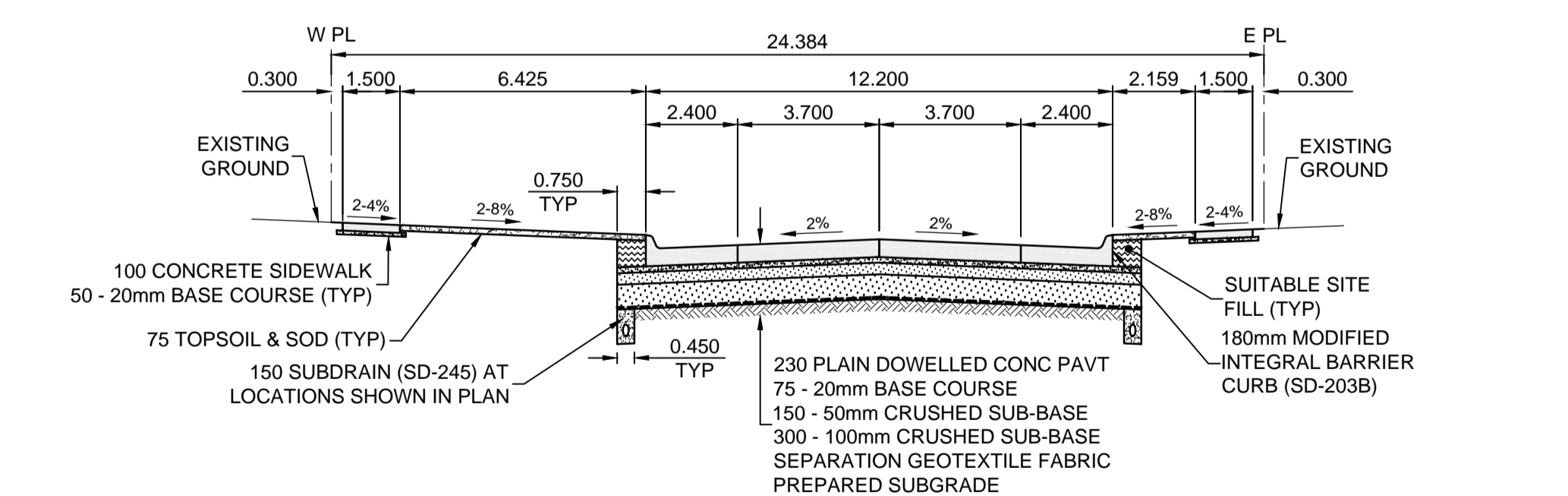
DETECTABLE BAR TILE DETAIL
SCALE: NTS



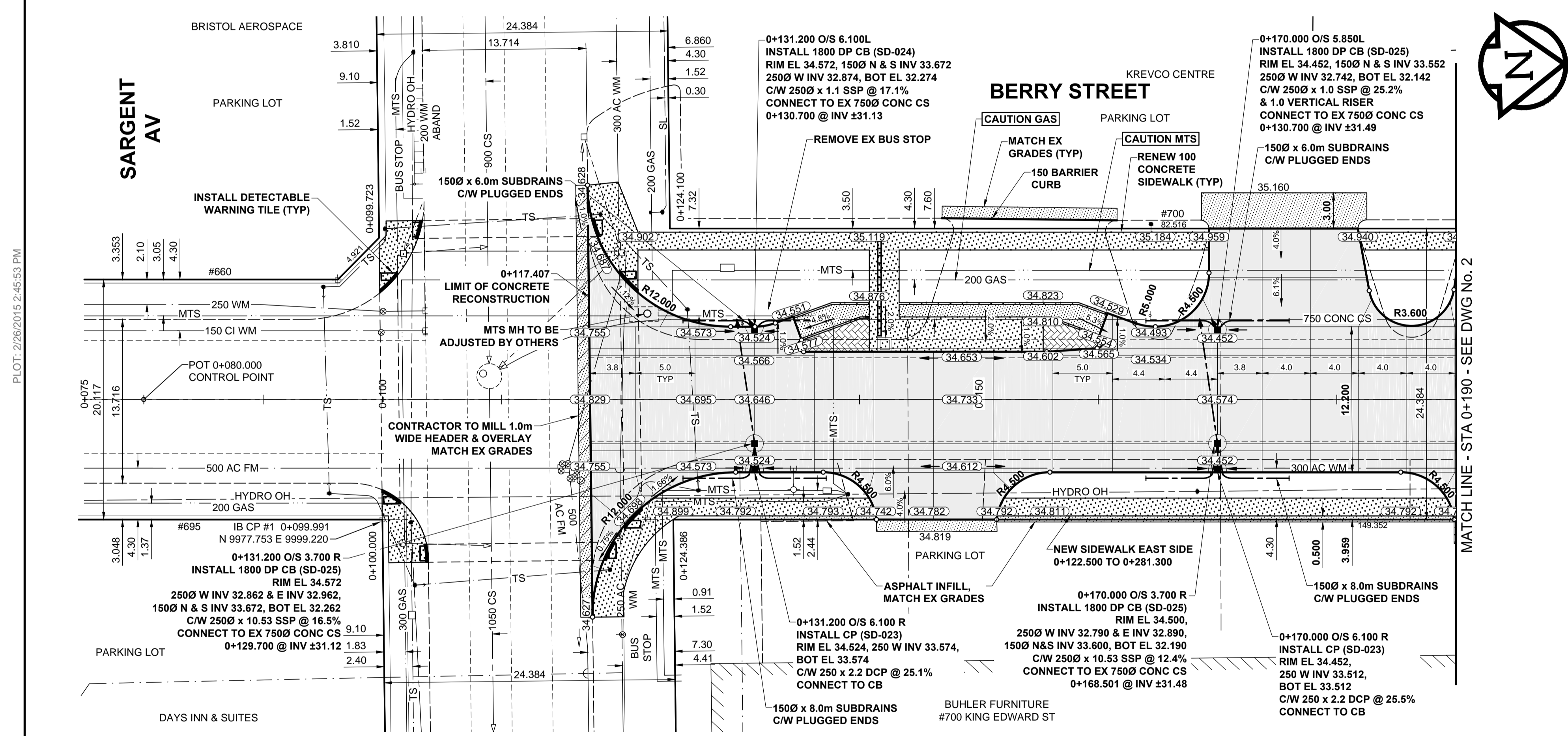
TYPICAL BUS STOP PLATFORM
SCALE: NTS



TYPICAL PAVEMENT SECTION AT BUS STOP LOCATION
CONCRETE PAVEMENT STRUCTURE
SCALE: NTS



TYPICAL PAVEMENT SECTION
CONCRETE PAVEMENT STRUCTURE
SCALE: NTS



PLAN
SCALE: 1:250

CONTROL LINE - COORDINATES

NAME	NORTHING	EASTING
POT 0+080.000	9958.1271	9988.4642
PI 0+273.630	10151.6377	9995.2622
POT 0+520.000	10397.8907	10002.8458

METRIC
WHOLE NUMBERS INDICATE MILLIMETRES
DECIMALIZED NUMBERS INDICATE METRES

EXISTING	LEGEND - PLAN	NEW	EXISTING	LEGEND - PLAN	NEW	EXISTING	LEGEND - PLAN	NEW
○	GAS	○	MANHOLE	●	CONCRETE PAVEMENT	□	LOCATION APPROVED UNDERGROUND STRUCTURES	□
□	HYDRO	□	CATCH BASIN / CATCH PIT	■	CONC SIDEWALK / MEDIAN	□	CONCRETE PAVEMENT	□
△	CATV / FIBRE OPTIC	△	CURB INLET WITH BOX	▲	ASPHALT PAVEMENT	□	ASPHALT PAVEMENT	□
⊙	TRAFFIC SIGNALS / PIT	⊙	TREE	■	PAVING STONE	□	GRAVEL	□
⊕	LAND DRAINAGE SEWER	⊕	TEST HOLE	■	GRAVEL	□	RAMP CURB	□
⊕	SANITARY/COMBINED SEWER	⊕	PROPERTY LINE	■	GRAVEL	□	PLANING / REMOVAL	□
⊕	SEWER SERV/DRAINAGE CONN	⊕	SURVEY BAR	■	GRAVEL	□	PLANING / REMOVAL	□
⊕	WATERMAIN	⊕	FENCE	■	GRAVEL	□	PLANING / REMOVAL	□
⊕	SUBDRAIN	⊕	BOC / EDGE OF PAVEMENT	■	GRAVEL	□	PLANING / REMOVAL	□
⊕	DITCH	⊕	ELEVATION	■	GRAVEL	□	PLANING / REMOVAL	□
⊕	DITCH	⊕	TRAFFIC SIGN	■	GRAVEL	□	PLANING / REMOVAL	□

LOCATION APPROVED UNDERGROUND STRUCTURES

DATE COMMITTEE

NOTE:
LOCATION OF UNDERGROUND STRUCTURES AS SHOWN ARE BASED ON THE BEST INFORMATION AVAILABLE. BUT NO GUARANTEE IS GIVEN THAT ALL EXISTING UTILITIES ARE SHOWN OR THAT THE GIVEN LOCATIONS ARE EXACT. CONFIRMATION OF EXISTENCE AND EXACT LOCATION OF ALL SERVICES MUST BE OBTAINED FROM THE INDIVIDUAL UTILITIES BEFORE PROCEEDING WITH CONSTRUCTION.

GBM 38-001 Tblt. in N. Conc. foundation of The International Inn, ELEV 236.061 Wellington Ave. & Berry St., 0.6m W. of N.E. Cor. of Bldg.

NO.	REVISIONS	DATE	BY
B	ISSUED FOR TENDER	15/02/27	RPB
A	ISSUED FOR CLIENT REVIEW	15/02/02	RPB

PROFESSIONAL'S SEAL
R.P. BRUCE
REGISTERED PROFESSIONAL ENGINEER

THE CITY OF WINNIPEG
PUBLIC WORKS DEPARTMENT
ENGINEERING DIVISION

2015 LOCAL STREET & ALLEY RENEWAL PROGRAM

BERRY STREET
SARGENT AV TO WELLINGTON AV
CONCRETE RECONSTRUCTION
HORIZONTAL AND VERTICAL ALIGNMENT
STA 0+075 TO STA 0+190

CITY DRAWING NUMBER N/A
SHEET 1 OF 14
DRAWING No. 1
REV B

APEGM
Certificate of Authorization
MORRISON HERSHFELD
No. 1736
BID OPPORTUNITY No. 8-2015

FILE NAME: W140010.Berry-PP-01.dwg, Saved By: diane