

**NOTES:**

1. MAINTAIN A MINIMUM OF ONE LANE, IN THE PROPER DIRECTION, OF TRAFFIC AT ALL TIMES DURING CONSTRUCTION.
2. INTERSECTING STREETS AND PRIVATE APPROACH ACCESS SHALL BE MAINTAINED AT ALL TIMES.
3. CONSTRUCTION STAGING IN ACCORDANCE WITH THE 2011 EDITION OF THE CITY OF WINNIPEG "MANUAL OF TEMPORARY TRAFFIC CONTROL IN WORK AREAS ON CITY STREETS".
4. MAINTAIN EXISTING DRAINAGE AND INSTALL PROPOSED DRAINAGE APPURTENANCES AS REQUIRED DURING THE APPROPRIATE STAGES AND AS DIRECTED BY THE CONTRACT ADMINISTRATOR.
5. TO FACILITATE LDS INSTALLATION, SAWCUT EXISTING PAVEMENT (FULL DEPTH) PRIOR TO REMOVAL.
6. CONSTRUCT TEMPORARY ASPHALT PAVEMENT AND RAMPS AS REQUIRED TO FACILITATE THE CONSTRUCTION STAGING. THE TEMPORARY ASPHALT PAVEMENT SHALL CONSIST OF 75mm - TYPE 1A ASPHALTIC CONCRETE PAVEMENT AND 300 BASE COURSE.
7. MAINTAIN PEDESTRIAN ACCESS TO ALL BUSINESSES.

**LEGEND:**

CONSTRUCTION	TRAFFIC FLOW	
[Red shaded area]	[Red arrow]	STAGE 1A - ONE WAY EACH WAY
[Blue shaded area]	[Blue arrow]	STAGE 1B - ONE WAY EASTBOUND
[Green shaded area]	[Green arrow]	STAGE 1C - ONE WAY EASTBOUND

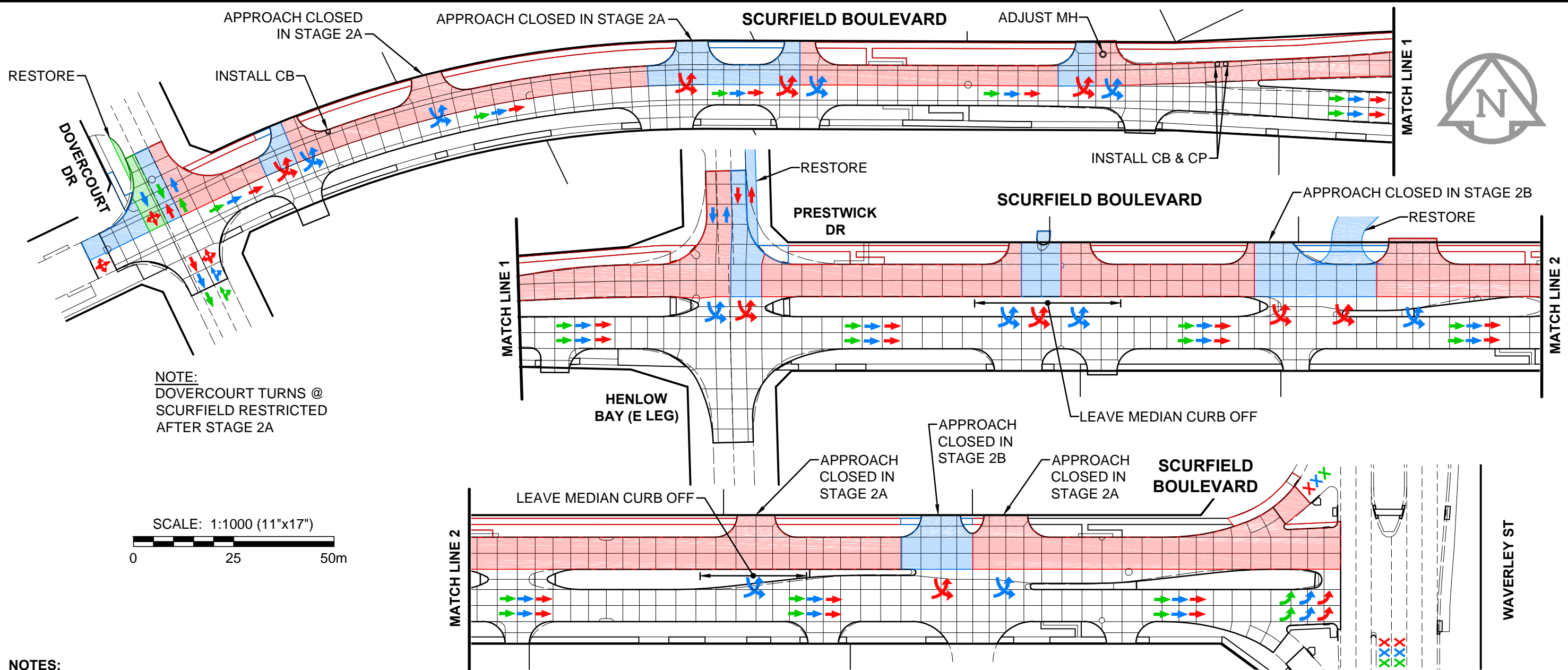
BID OPPORTUNITY No. 8-2015

**METRIC**  
 WHOLE NUMBERS INDICATE MILLIMETRES  
 DECIMALIZED NUMBERS INDICATE METRES



2015 LOCAL STREET & ALLEY RENEWAL PROGRAM  
**SCURFIELD BOULEVARD**  
 DOVERCOURT DR TO WAVERLEY ST  
 CONCRETE RECONSTRUCTION  
**CONSTRUCTION STAGING - STAGE 1A, B & C**

SCALE 1:1000
DATE February 4, 2015
FIGURE NO. <b>01</b>



**NOTE:**  
DOVERCOURT TURNS @  
SCURFIELD RESTRICTED  
AFTER STAGE 2A



**NOTES:**

1. MAINTAIN A MINIMUM OF ONE LANE, IN THE PROPER DIRECTION, OF TRAFFIC AT ALL TIMES DURING CONSTRUCTION.
2. INTERSECTING STREETS AND PRIVATE APPROACH ACCESS SHALL BE MAINTAINED AT ALL TIMES.
3. CONSTRUCTION STAGING IN ACCORDANCE WITH THE 2011 EDITION OF THE CITY OF WINNIPEG "MANUAL OF TEMPORARY TRAFFIC CONTROL IN WORK AREAS ON CITY STREETS".
4. MAINTAIN EXISTING DRAINAGE AND INSTALL PROPOSED DRAINAGE APPURTENANCES AS REQUIRED DURING THE APPROPRIATE STAGES AND AS DIRECTED BY THE CONTRACT ADMINISTRATOR.
5. TO FACILITATE LDS INSTALLATION, SAWCUT EXISTING PAVEMENT (FULL DEPTH) PRIOR TO REMOVAL.
6. CONSTRUCT TEMPORARY ASPHALT PAVEMENT AND RAMPS AS REQUIRED TO FACILITATE THE CONSTRUCTION STAGING. THE TEMPORARY ASPHALT PAVEMENT SHALL CONSIST OF 75mm - TYPE 1A ASPHALTIC CONCRETE PAVEMENT AND 300 BASE COURSE.
7. MAINTAIN PEDESTRIAN ACCESS TO ALL BUSINESSES.

**LEGEND:**

CONSTRUCTION	TRAFFIC FLOW	
[Red hatched box]	[Red arrow]	STAGE 2A - ONE WAY EASTBOUND
[Blue hatched box]	[Blue arrow]	STAGE 2B - ONE WAY EASTBOUND
[Green hatched box]	[Green arrow]	STAGE 2C - ONE WAY EASTBOUND

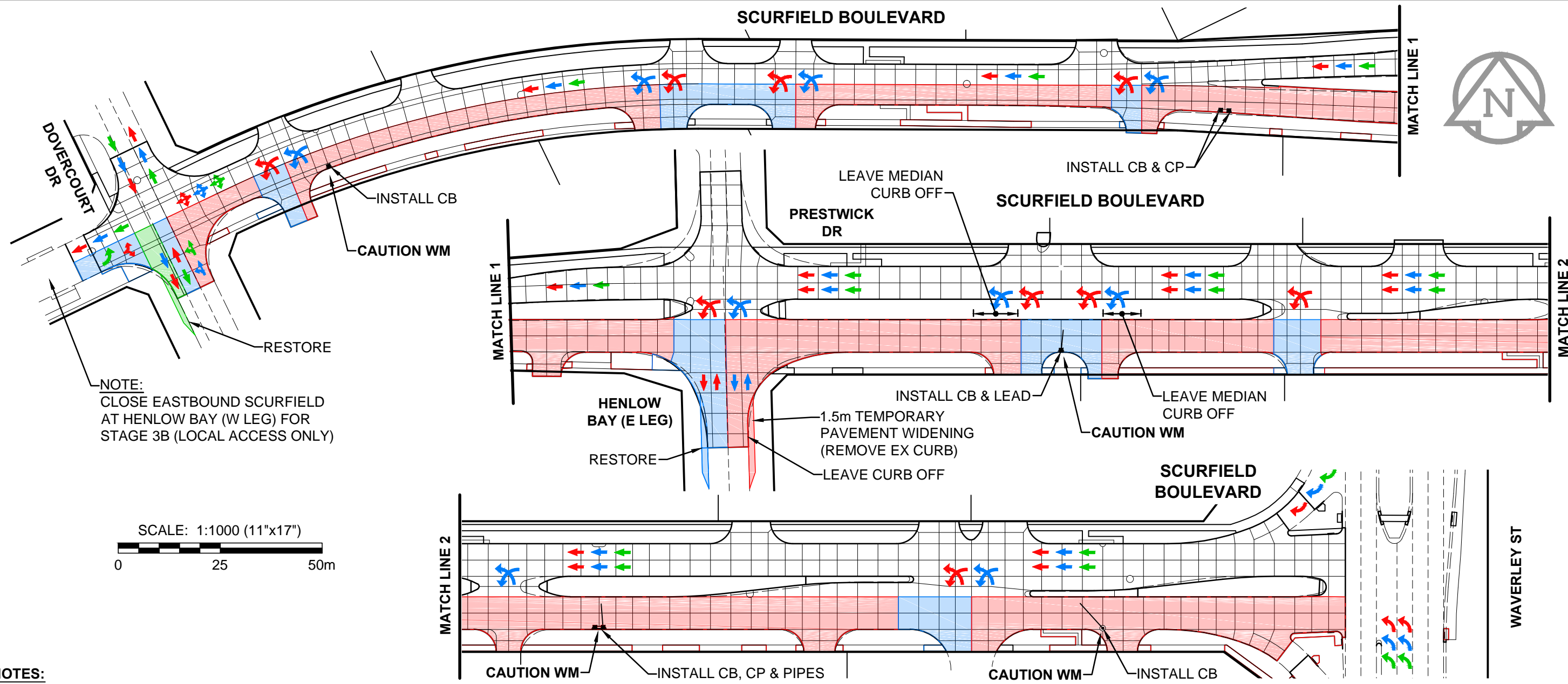
BID OPPORTUNITY No. 8-2015

**METRIC**  
WHOLE NUMBERS INDICATE MILLIMETRES  
DECIMALIZED NUMBERS INDICATE METRES

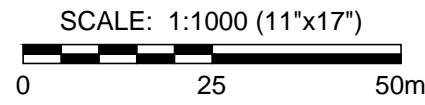


2015 LOCAL STREET & ALLEY RENEWAL PROGRAM  
**SCURFIELD BOULEVARD**  
DOVERCOURT DR TO WAVERLEY ST  
CONCRETE RECONSTRUCTION  
**CONSTRUCTION STAGING - STAGE 2A, B & C**

SCALE 1:1000
DATE February 4, 2015
FIGURE NO. <b>02</b>



NOTE:  
CLOSE EASTBOUND SCURFIELD  
AT HENLOW BAY (W LEG) FOR  
STAGE 3B (LOCAL ACCESS ONLY)



**NOTES:**

1. MAINTAIN A MINIMUM OF ONE LANE, IN THE PROPER DIRECTION, OF TRAFFIC AT ALL TIMES DURING CONSTRUCTION.
2. INTERSECTING STREETS AND PRIVATE APPROACH ACCESS SHALL BE MAINTAINED AT ALL TIMES.
3. CONSTRUCTION STAGING IN ACCORDANCE WITH THE 2011 EDITION OF THE CITY OF WINNIPEG "MANUAL OF TEMPORARY TRAFFIC CONTROL IN WORK AREAS ON CITY STREETS".
4. MAINTAIN EXISTING DRAINAGE AND INSTALL PROPOSED DRAINAGE APPURTENANCES AS REQUIRED DURING THE APPROPRIATE STAGES AND AS DIRECTED BY THE CONTRACT ADMINISTRATOR.
5. TO FACILITATE LDS INSTALLATION, SAWCUT EXISTING PAVEMENT (FULL DEPTH) PRIOR TO REMOVAL.
6. CONSTRUCT TEMPORARY ASPHALT PAVEMENT AND RAMPS AS REQUIRED TO FACILITATE THE CONSTRUCTION STAGING. THE TEMPORARY ASPHALT PAVEMENT SHALL CONSIST OF 75mm - TYPE 1A ASPHALTIC CONCRETE PAVEMENT AND 300 BASE COURSE.
7. MAINTAIN PEDESTRIAN ACCESS TO ALL BUSINESSES.

**LEGEND:**

CONSTRUCTION	TRAFFIC FLOW	
[Red hatched box]	[Red arrow]	STAGE 3A FLOW - ONE WAY WESTBOUND
[Blue hatched box]	[Blue arrow]	STAGE 3B FLOW - ONE WAY WESTBOUND
[Green hatched box]	[Green arrow]	STAGE 3C FLOW - ONE WAY WESTBOUND

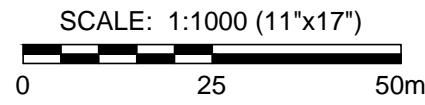
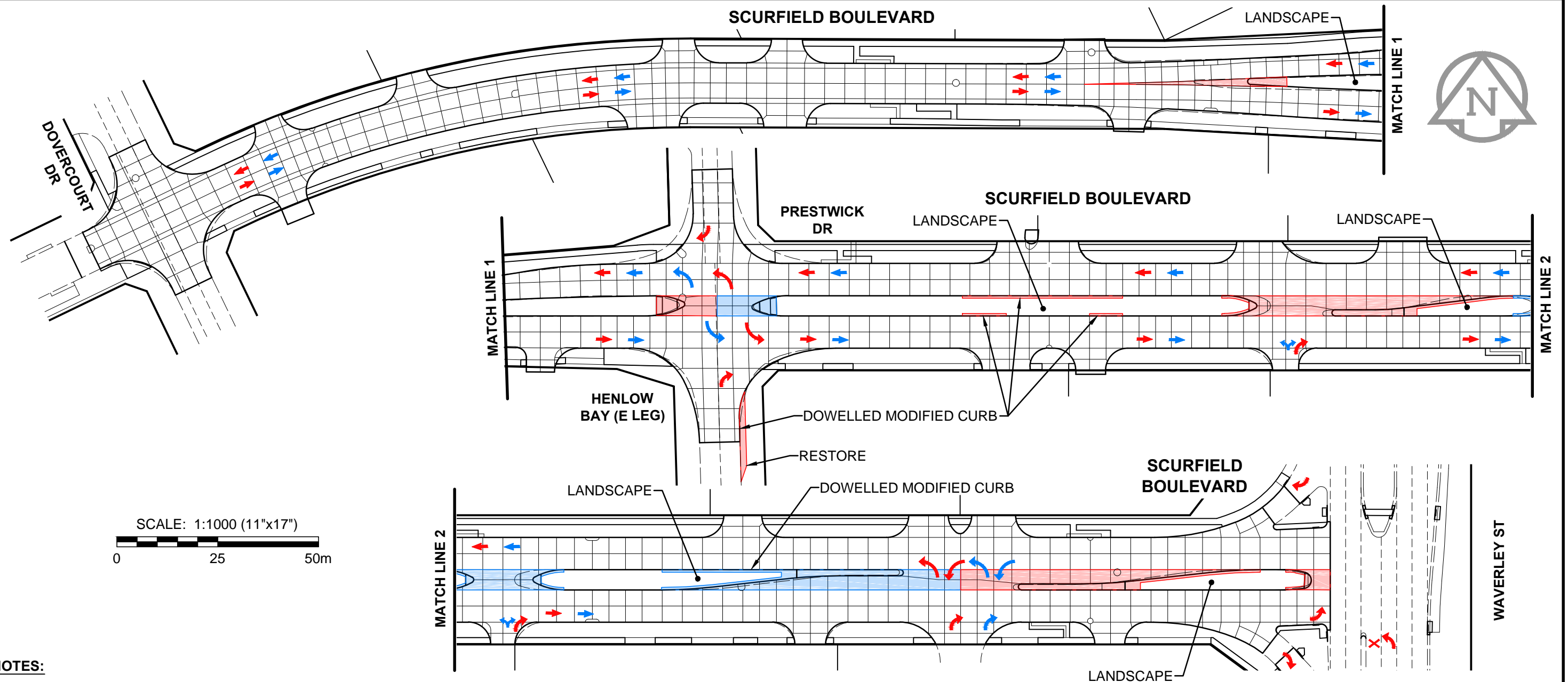
BID OPPORTUNITY No. 8-2015

**METRIC**  
WHOLE NUMBERS INDICATE MILLIMETRES  
DECIMALIZED NUMBERS INDICATE METRES



2015 LOCAL STREET & ALLEY RENEWAL PROGRAM  
**SCURFIELD BOULEVARD**  
DOVERCOURT DR TO WAVERLEY ST  
CONCRETE RECONSTRUCTION  
**CONSTRUCTION STAGING - STAGE 3A, B & C**

SCALE 1:1000
DATE February 4, 2015
FIGURE NO. <b>03</b>



**NOTES:**

1. MAINTAIN A MINIMUM OF ONE LANE, IN THE PROPER DIRECTION, OF TRAFFIC AT ALL TIMES DURING CONSTRUCTION.
2. INTERSECTING STREETS AND PRIVATE APPROACH ACCESS SHALL BE MAINTAINED AT ALL TIMES.
3. CONSTRUCTION STAGING IN ACCORDANCE WITH THE 2011 EDITION OF THE CITY OF WINNIPEG "MANUAL OF TEMPORARY TRAFFIC CONTROL IN WORK AREAS ON CITY STREETS".
4. MAINTAIN EXISTING DRAINAGE AND INSTALL PROPOSED DRAINAGE APPURTENANCES AS REQUIRED DURING THE APPROPRIATE STAGES AND AS DIRECTED BY THE CONTRACT ADMINISTRATOR.
5. TO FACILITATE LDS INSTALLATION, SAWCUT EXISTING PAVEMENT (FULL DEPTH) PRIOR TO REMOVAL.
6. CONSTRUCT TEMPORARY ASPHALT PAVEMENT AND RAMPS AS REQUIRED TO FACILITATE THE CONSTRUCTION STAGING. THE TEMPORARY ASPHALT PAVEMENT SHALL CONSIST OF 75mm - TYPE 1A ASPHALTIC CONCRETE PAVEMENT AND 300 BASE COURSE.
7. MAINTAIN PEDESTRIAN ACCESS TO ALL BUSINESSES.

**LEGEND:**

CONSTRUCTION	TRAFFIC FLOW	
		STAGE 4A - ONE LANE PER DIRECTION
		STAGE 4B - ONE LANE PER DIRECTION

BID OPPORTUNITY No. 8-2015

**METRIC**  
WHOLE NUMBERS INDICATE MILLIMETRES  
DECIMALIZED NUMBERS INDICATE METRES



2015 LOCAL STREET & ALLEY RENEWAL PROGRAM  
**SCURFIELD BOULEVARD**  
**DOVERCOURT DR TO WAVERLEY ST**  
**CONCRETE RECONSTRUCTION**  
**CONSTRUCTION STAGING - STAGE 4A & B**

SCALE 1:1000
DATE February 4, 2015
FIGURE NO. <b>04</b>