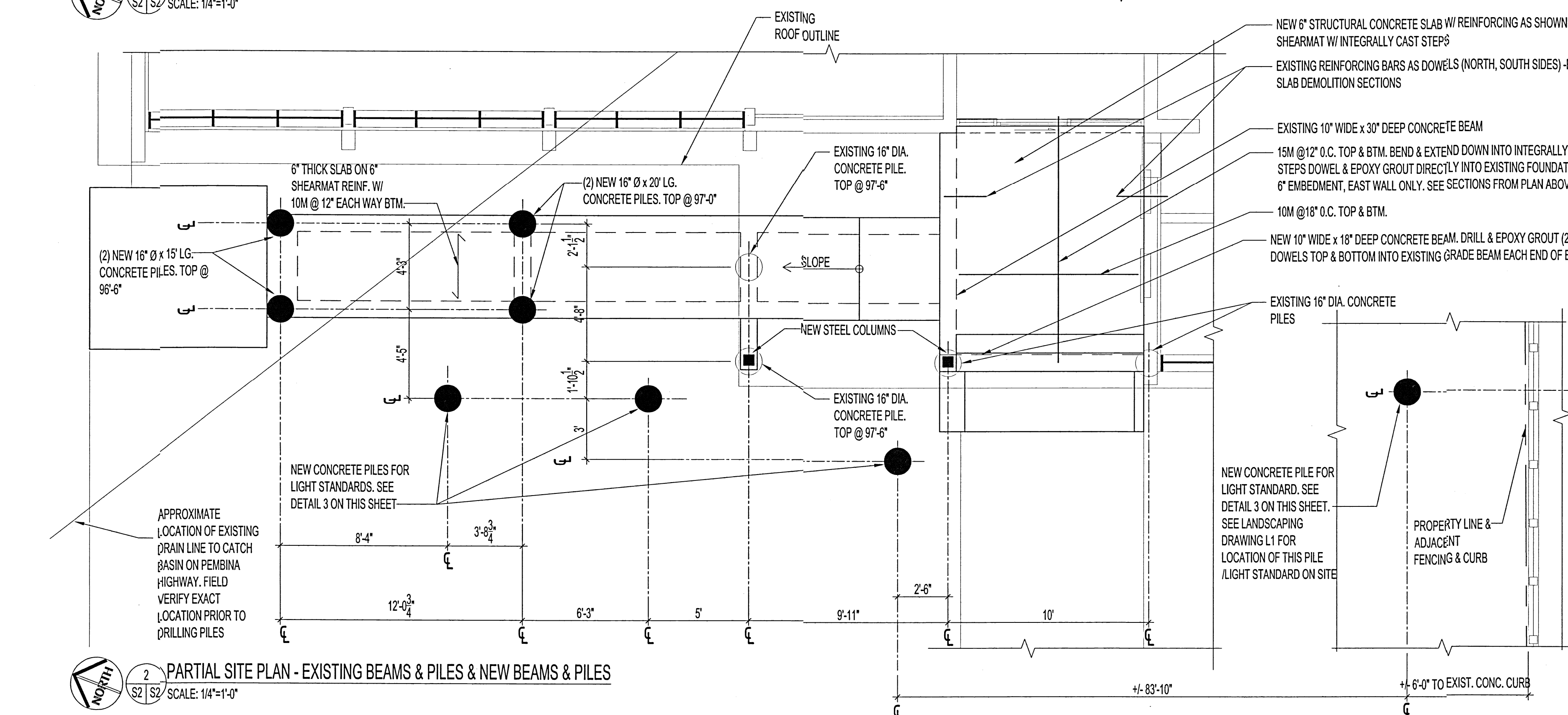
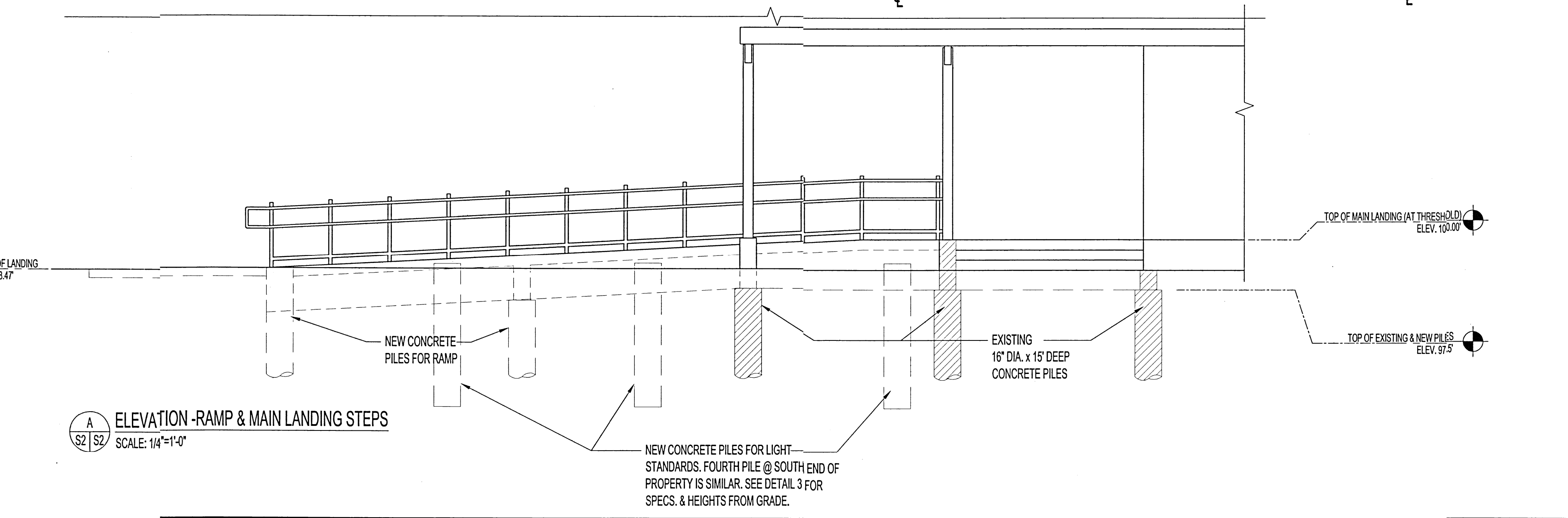


1 PARTIAL SITE PLAN - NEW RAMP RENOVATION
SCALE: 1/4"=1'-0"



2 PARTIAL SITE PLAN - EXISTING BEAMS & PILES & NEW BEAMS & PILES
SCALE: 1/4"=1'-0"



3 ELEVATION - RAMP & MAIN LANDING STEPS
SCALE: 1/4"=1'-0"

DESIGN LOADS

- RAMP STRUCTURE DESIGNED FOR 100 PSF LIVE LOAD.
- PILE DESIGN IS BASED ON CAST-IN-PLACE FRICTION PILES USING THE FOLLOWING SKIN FRICTION DESIGN VALUES:
 - SERVICEABILITY LIMIT STATES (SLS) = 345 PSF
 - ULTIMATE LIMIT STATES = 435 PSF
- THE FOUNDATION OF THE EXISTING BUILDING THAT ARE IMPACTED BY NEW WORK HAVE BEEN REVIEWED TO ENSURE THEY CAN SAFELY SUPPORT ANY NEW LOADING CONDITIONS IN ACCORDANCE WITH PART 4 OF THE 2011 MBC.
- EXISTING BUILDING STRUCTURAL MEMBER LOADS AS INDICATED ON DRAWINGS.

EARTHWORK

- CONFORM TO THE FOLLOWING CITY OF WINNIPEG STANDARDS AND SPECIFICATIONS:
 - EARTHWORK AND GRADING - CW3170
 - SUB-GRADE, SUB-BASE AND BASE COURSE INSTALLATION - CW3110
 - SODDING CW310

CONCRETE

- CONCRETE MATERIALS AND CONSTRUCTION SHALL CONFORM TO CAN/CSA-A23.1-04.
- NO WATER SHALL BE USED TO RE-TEMPER LOADS. USE SUPER-PLASTICIZER ONLY.
- VIBRATE CONCRETE UPON PLACEMENT TO ENSURE COMPLETE CONSOLIDATION AND TO MINIMIZE VOIDS.

CONCRETE TYPES

- PILES: 32 MPa @ 28d, EXPOSURE CLASS S-2, AIR CONTENT CATEGORY 1, 40mm MAX. AGGREGATE SIZE, CEMENT TYPE HS
- RAMP, STAIR & LANDING STRUCTURES: 35 MPa @ 28d, EXPOSURE CLASS C-1, AIR CONTENT CATEGORY 1, 20mm MAX. AGGREGATE SIZE, CEMENT TYPE GU
- SIDEWALK (NON-REINFORCED): 35 MPa @ 28d, EXPOSURE CLASS C-2, AIR CONTENT CATEGORY 1, 20mm MAX. AGGREGATE SIZE, CEMENT TYPE GU
- CONCRETE SIDEWALK INSTALLATION SHALL CONFORM TO C.O.W. SPECIFICATION: PORTLAND CEMENT CONCRETE SIDEWALK - CW3325.
- REINFORCING STEEL SHALL CONFORM TO CAN/CSA-G30.18 GRADE 400W.
- REINFORCING STEEL SHALL BE EPOXY COATED FOR ALL RAMP, STAIR AND LANDING STRUCTURES.

STEEL

- SUPPLY AND FABRICATION OF STEEL COMPONENTS SHALL MEET THE REQUIREMENTS OF:
 - STRUCTURAL SHAPES - CAN/CSA - G40.20/G40.21 OR ASTM A992/A992M; BARS - CAN3-G312.1/G312.2; BOLTS - A325; WELDING - CAN/CSA-S16 & CAN/CSA W59.
- NEW ASSEMBLIES SHALL BE SHOP FABRICATED TO THE FULLEST EXTENT POSSIBLE. FIELD WORK SHALL BE LIMITED TO INSTALLATIONS, REPAIRS & TOUCH-UPS, UNLESS NOTED OTHERWISE.
- SUBMIT SHOP DRAWINGS FOR ALL GUARDRAIL AND HANDRAIL COMPONENTS PRIOR TO FABRICATION.

FINISHES

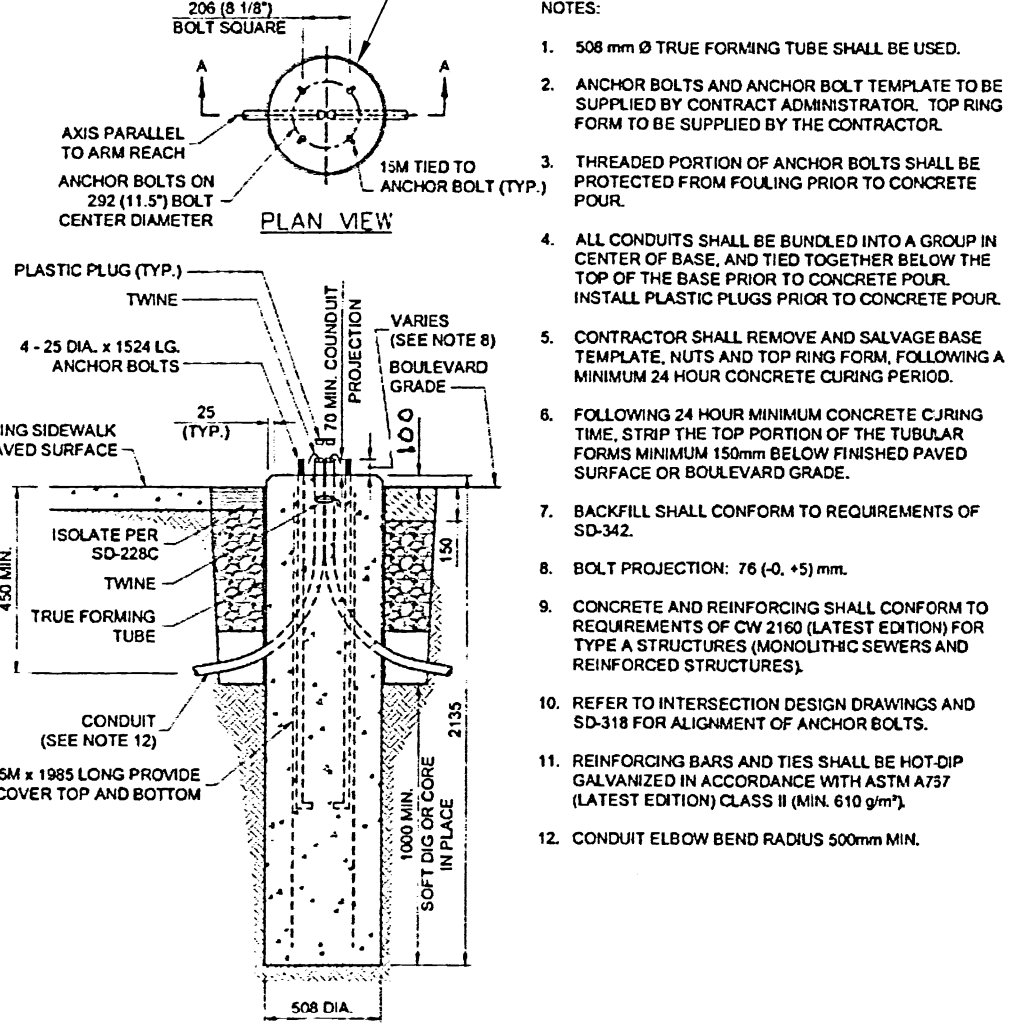
- CONCRETE WALKWAY SURFACES (ALL) - NON-SLIP BROOM FINISH.
- CONCRETE RAMP SIDEWALLS AND OTHER EXPOSED VERTICAL SURFACES - SMOOTH FORM ARCHITECTURAL GRADE FINISH (USE PAPER-LINED FORM BOARDS).
- INTERIOR STRUCTURAL STEEL COMPONENTS - SHOP PRIME; TOPCOAT WHERE SPECIFIED.
- EXTERIOR STRUCTURAL STEEL COMPONENTS - EPOXY PRIME AND URETHANE TOPCOAT; COLOURS AS SPECIFIED.
- EXTERIOR ARCHITECTURAL STEEL COMPONENTS - GALVANIZE, ETCHING PRIMER, POWDER TOPCOAT; COLOURS AS SPECIFIED.
- EXTERIOR STAINLESS STEEL COMPONENTS - NO. 4 BRUSHED FINISH AND METAL POLISH UPON INSTALLATION.
- ALL PAINTED OR TREATED COMPONENTS SHALL BE SHOP FINISHED; FIELD PAINTING LIMITED TO TOUCH-UPS ONLY.
- SUBMIT FINISH PRODUCT DATA AND COLOUR SAMPLES TO CONTRACT ADMINISTRATOR FOR APPROVAL.

NOTES:

GENERAL NOTES & SPECIFICATIONS

- CITY OF WINNIPEG STANDARDS AND SPECIFICATIONS APPLY TO ALL WORK.
- DO NOT SCALE DRAWINGS.
- ALL DIMENSIONS MUST BE FIELD VERIFIED AND CONFIRMED ON-SITE BY THE CONTRACTOR.
- REPORT DEVIATIONS IN FIELD CONDITIONS OR DESIGN DRAWINGS TO THE CONTRACT ADMINISTRATOR.
- THE CONTRACTOR IS RESPONSIBLE FOR SURVEYING AND ESTABLISHING ALL WORK ELEVATIONS, LINES AND POINTS.
- THE CONTRACTOR IS RESPONSIBLE FOR IDENTIFYING AND LOCATING ALL UTILITIES AND SERVICES ON THE SITE.
- PROTECT EXISTING SITE STRUCTURES, UTILITIES AND TREES DURING THE WORK.
- PROVIDE SITE CLEAN-UP AT THE END OF THE WORK, TO THE SATISFACTION OF THE CONTRACT ADMINISTRATOR.

SEE ELEC. DWG. FOR CABLING, CONDUIT, ANCHOR BOLTS, ETC.



3 SINGLE POLE BASE - LIGHT DUTY
SCALE: N.T.S.

ISSUED FOR CONSTRUCTION		MMK 2015.07.24	
No.	REVISION/DESCRIPTION	BY	DATE

DRAWN	MMK	CHECKED	DESIGNED	APPROVED
DATE	2015.03.03	USER	APPROVAL	

THE CITY OF WINNIPEG
PLANNING, PROPERTY AND
DEVELOPMENT DEPARTMENT
MUNICIPAL ACCOMMODATIONS DIVISION
3-65 GARRY STREET, R3C 4K4

PROJECT	FORT GARRY LIBRARY EXTERIOR REFURBISHING		
ADDRESS	1360 PEMBINA HIGHWAY		
SHEET TITLE	PARTIAL SITE PLAN NEW RAMP & PILE PLAN		
SCALE	PROJECT No:	SHEET No:	
AS SHOWN	2015-054	S2	

