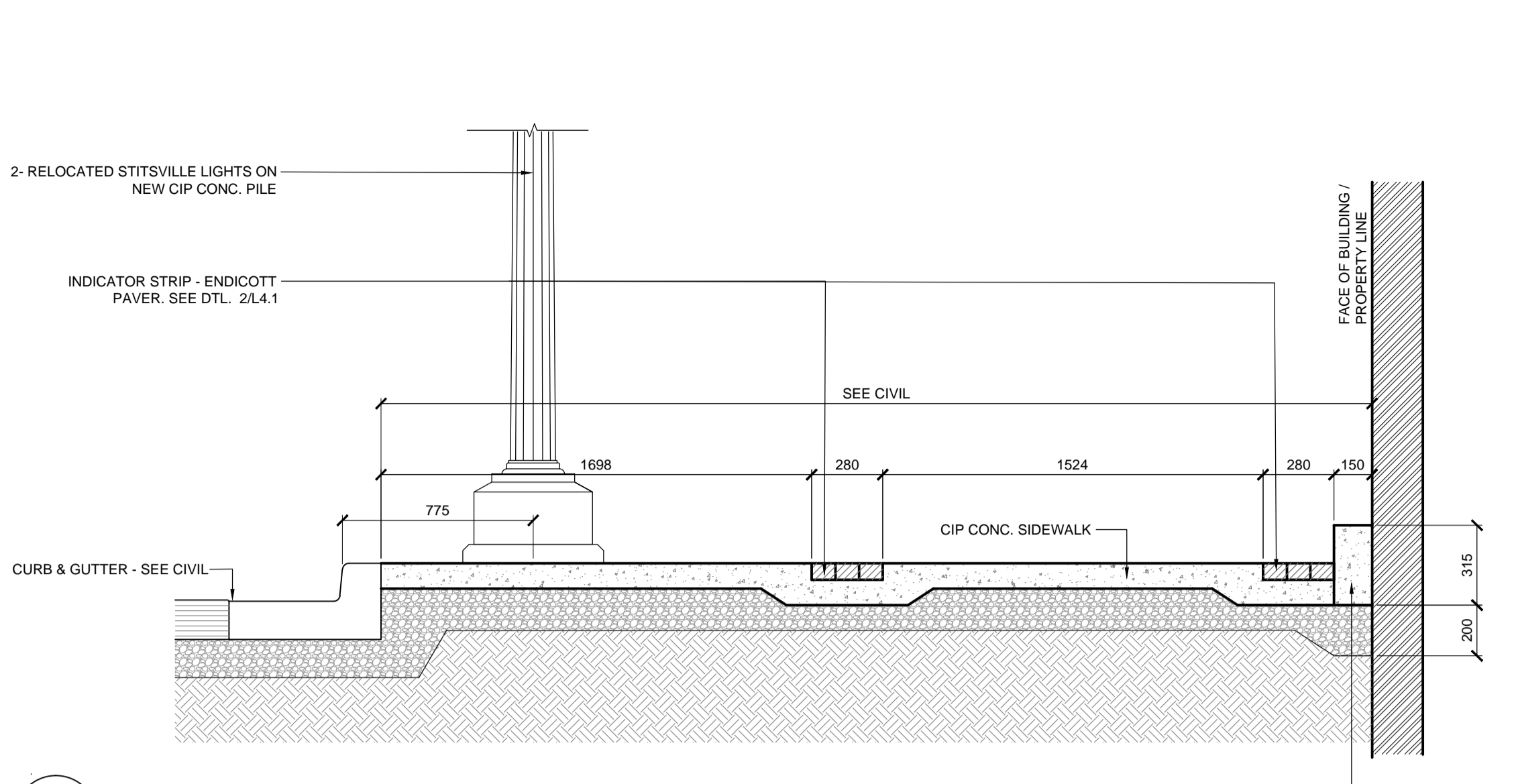
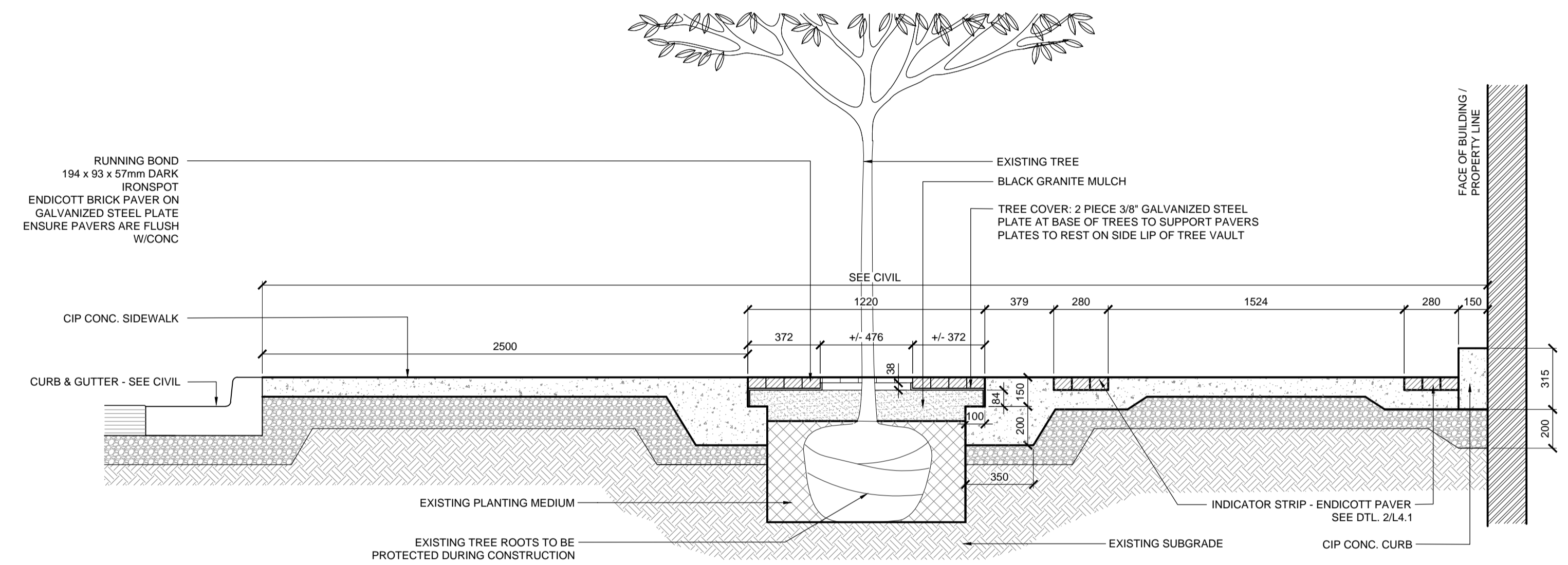


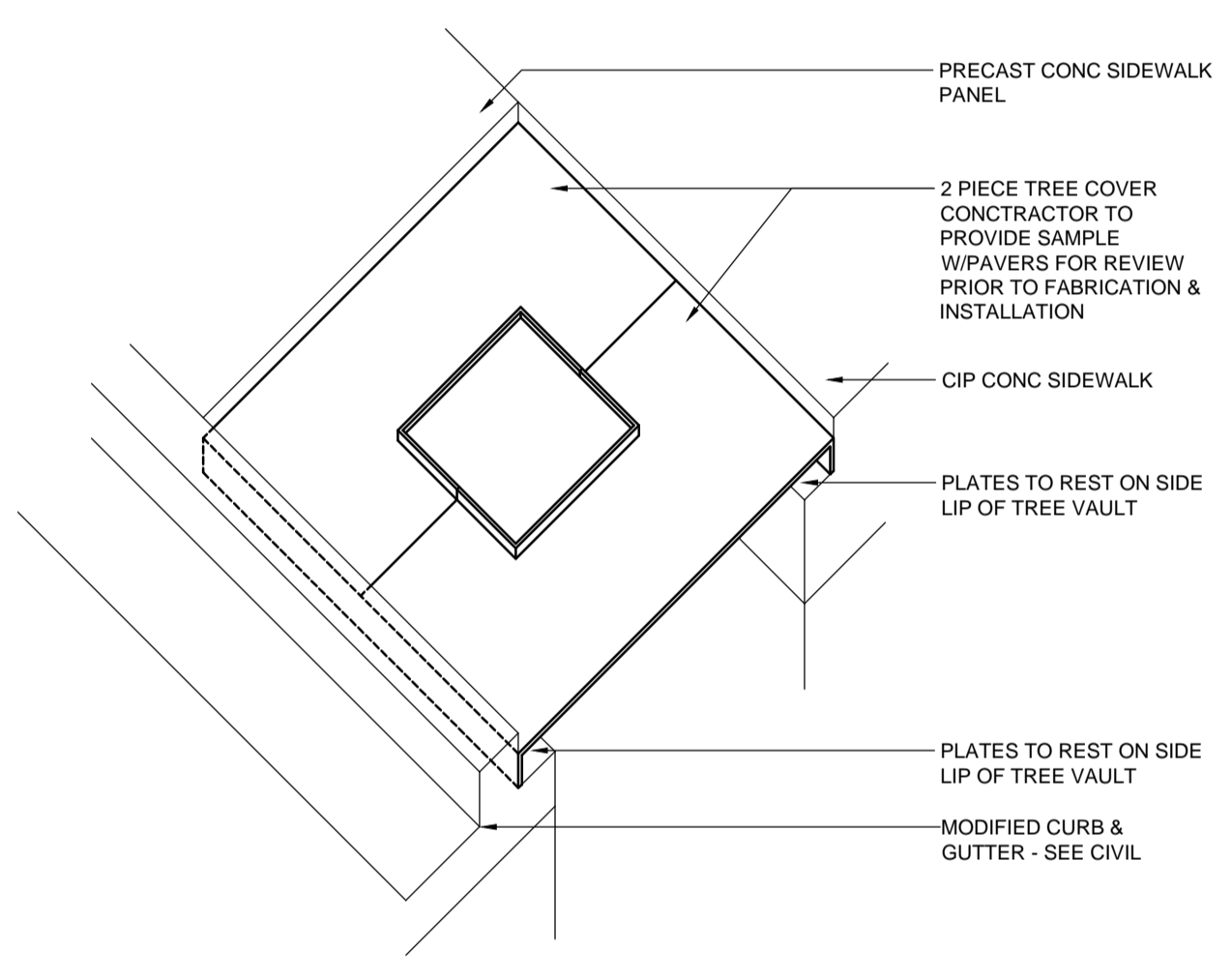
1 RORIE EAST SIDEWALK AT EXST. PLANTER - SECTION
SCALE: 1:20



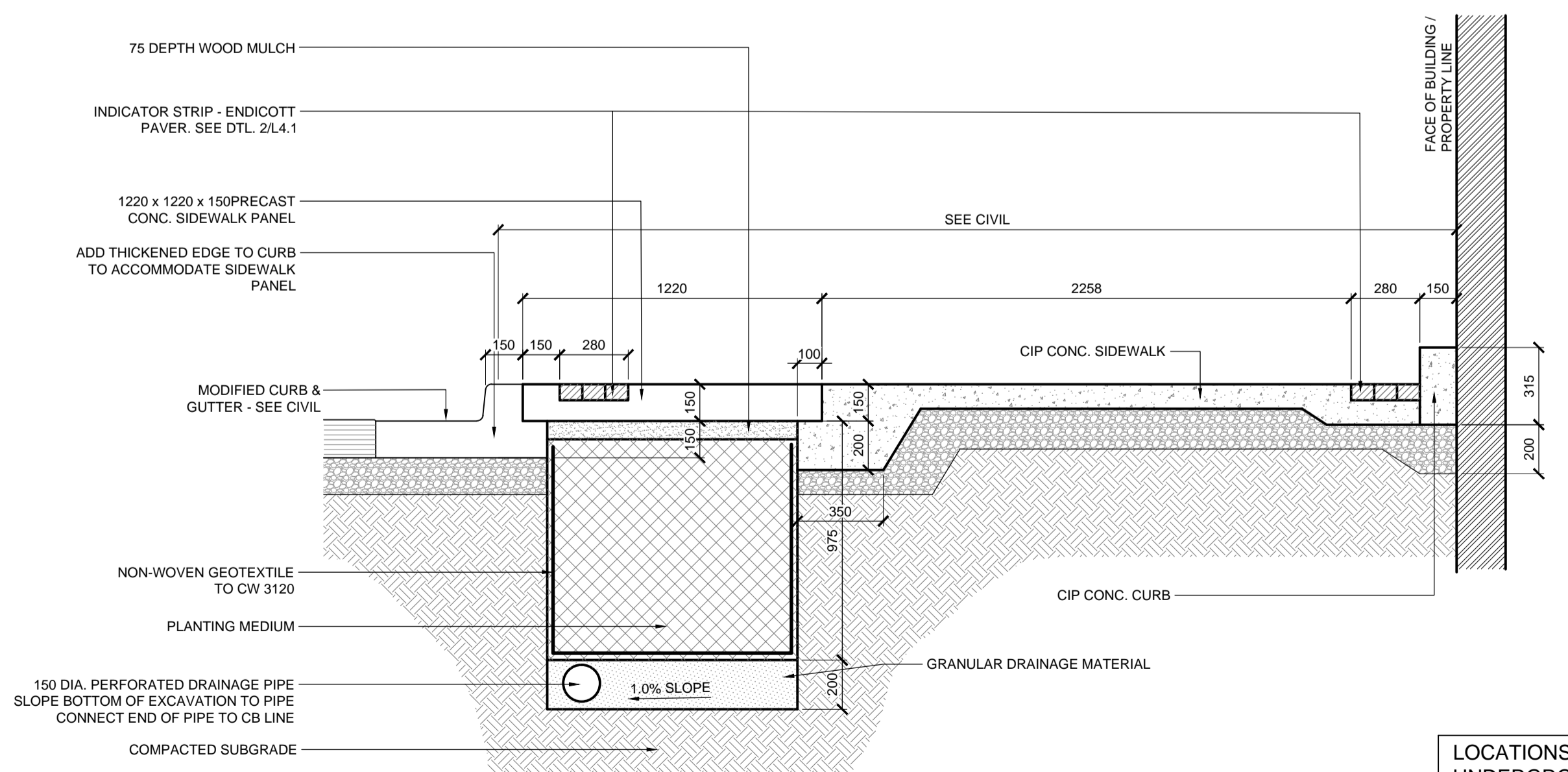
4 RORIE WEST SIDEWALK AT PARKING - SECTION
SCALE: 1:20



2 RORIE WEST SIDEWALK TREE COVER - SECTION
SCALE: 1:20



TREE COVER - AXONOMETRIC



3 RORIE EAST SIDEWALK TREE VAULT - SECTION
SCALE: 1:20

LOCATIONS APPROVED UNDERGROUND STRUCTURES			
SIGNED BY:	G.B.M. ELEV.	DESIGNED BY:	CHECKED BY:
SUPV U/G STRUCTURES		JH	GM
DATE		DRAWN BY:	APPROVED BY:
		JH	GM
LOCATION OF UNDERGROUND STRUCTURES AS SHOWN ARE BASED ON THE BEST INFORMATION AVAILABLE BUT NO GUARANTEE IS GIVEN THAT ALL EXISTING UTILITIES ARE SHOWN OR THAT THE GIVEN LOCATIONS ARE EXACT CONFIRMATION OF EXISTANCE AND EXACT LOCATION OF ALL SERVICES MUST BE OBTAINED FROM THE INDIVIDUAL UTILITIES BEFORE PROCEEDING			
NO.	ISSUED FOR TENDER	28/07/15	JH
A	ISSUED TO U/G STRUCTURES FOR REVIEW	21/7/15	JH
NO.	REVISIONS	DATE	BY

HTFC
PLANNING & DESIGN
300-115 St. Mary's Avenue East Winnipeg, MB R2B 0P5
PHONE: 204-944-1907

DESIGNED BY: JH
CHECKED BY: GM
DRAWN BY: JH
APPROVED BY: GM

HOR. SCALE: AS NOTED
VERTICAL: AS NOTED

NO. A
DATE: JULY 21, 2015

ENGINEER'S SEAL

CONSULTANT ACAD DWG. NO. L2.2

THE CITY OF WINNIPEG
PUBLIC WORKS DEPARTMENT
ENGINEERING SERVICES DIVISION

CITY OF WINNIPEG

CITY DRAWING NUMBER

SHEET 8 OF 15

RORIE BETWEEN MARKET & JOHN HIRSCH SECTIONS - EAST SIDE

BID NO. 669-2015

JUL 27 2015 5:06:41
 \\ps\HTFC\FILE_SERVER\2015\15-043 East Exchange Phase 3\ACAD\Details\15-043 Details.dwg - tab:L2.2

NOTE: These design documents are prepared solely for the use by the party with whom the design professional has entered into a contract and these are no representations of any kind made by the design professional to any party with whom the design professional has not entered into a contract.