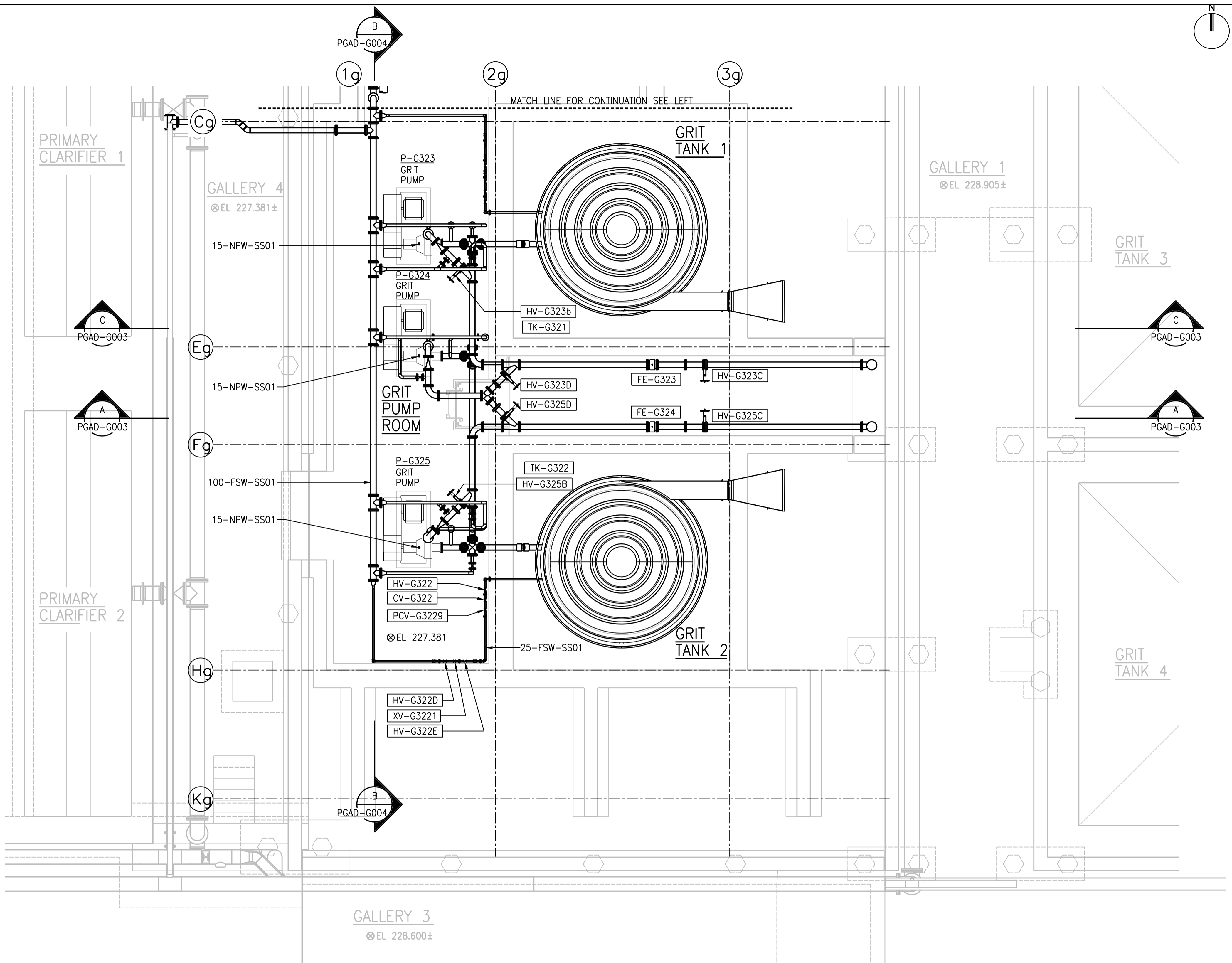
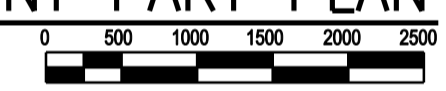
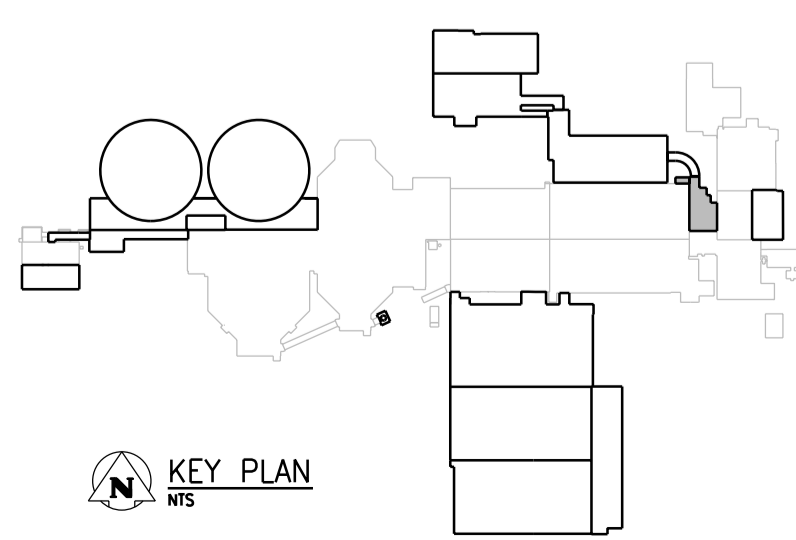
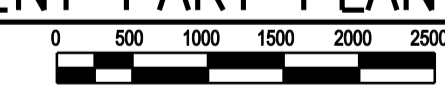


**BASEMENT PART PLAN**  
1:50



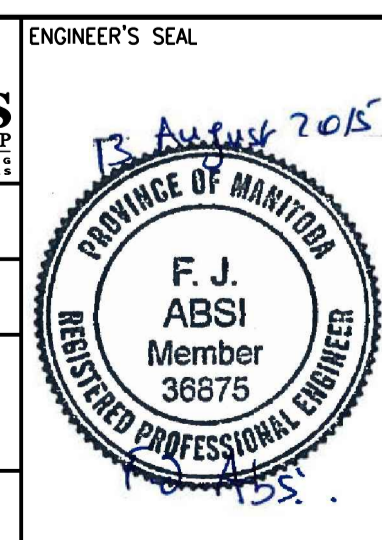
**BASEMENT PART PLAN**  
1:50



**APEGM**  
Certificate of Authorization  
CH2M HILL Canada Ltd.  
No. 1441

| NO. | REVISIONS         | DATE    | DESIGN | CHECK |
|-----|-------------------|---------|--------|-------|
| 00  | ISSUED FOR TENDER | 08/2015 | B.C.   | J.C.  |

|                          |   |
|--------------------------|---|
| <b>CH2MHILL.</b>         |   |
| DESIGNED BY:<br>B. EDGAR | CHECKED BY:<br>B. EDGAR                     |
| DRAWN BY:<br>B. COOPER   | APPROVED BY:<br>F. ABSI                     |
| SCALE:<br>1:50           | ISSUED FOR CONSTRUCTION<br>BY:<br>T. TURZAK |
| DATE:<br>2015/08/13      | DATE:<br>2015/08/13                         |
| CONSULTANT NO.: 474248   |   |



**THE CITY OF WINNIPEG**  
Winnipeg WATER AND WASTE DEPARTMENT

SOUTH END WATER POLLUTION CONTROL CENTRE  
SEWPC UPGRADING/EXPANSION PROJECT  
PROCESS  
GRIT TANKS 1 AND 2  
BASEMENT PLAN

CITY DRAWING NUMBER: 1-0102-PGAD-G001 SHEET: 00 REV: 00 SIZE: A1