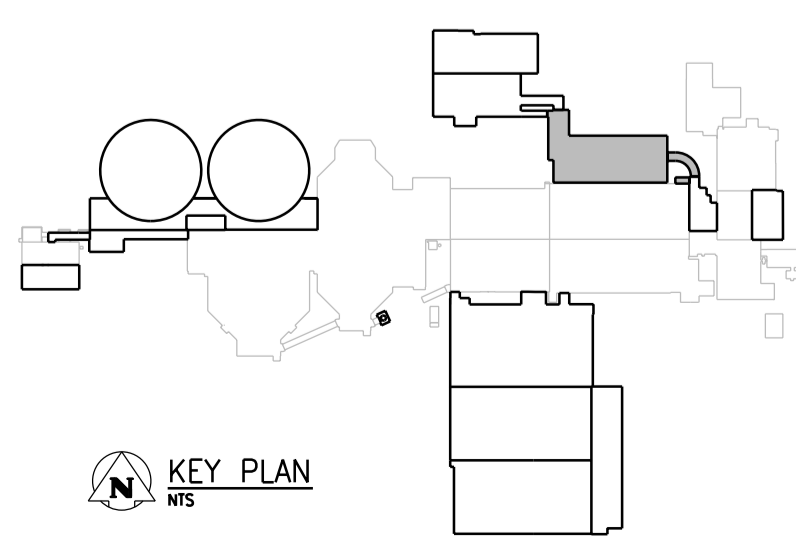


- NOTES:**
- REFER TO DUCT SCHEDULE FOR MATERIAL
  - ALL EXHAUST ODOROUS DUCTWORK FROM DISCHARGE DAMPER OF FAN EF-K611/K612 ON ROOF TO EXISTING STACK ARE TO BE FRP
  - ALL EXHAUST ODOROUS DUCTWORK FROM DISCHARGE DAMPER OF FAN EF-K611/K612 ON ROOF TO EXISTING STACK ARE TO BE FRP
  - PROVIDE 200 DRAIN PIPE FROM BOTTOM OF EACH EXHAUST FAN HOUSING C/W TRAP, RUN DRAIN THROUGH ROOF AND DOWN TO CLARIFIER ROOM ???WHERE PROVIDE HEAT TRACING FOR OUTDOOR DRAIN PIPES. FOR ROOF PENETRATION SEE ARCHITECTURAL DETAIL

**ROOF PLAN**  
1:100

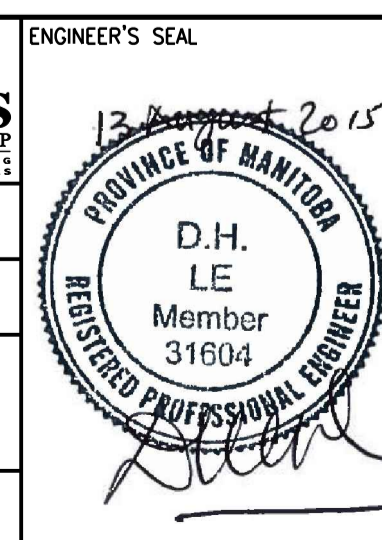


**APEGM**  
Certificate of Authorization  
CH2M HILL Canada Ltd.  
No. 1441

00	ISSUED FOR TENDER	08/2015	K.F.	J.C.
NO.	REVISIONS	DATE	DESIGN	CHECK

**CH2MHILL.**  
SNC-LAVALIN  
DESIGNED BY: D. LE  
DRAWN BY: K. FONG  
SCALE: 1:100  
DATE: 2015/08/13  
CONSULTANT NO.: 474248

CHECKED BY: T. TRAN  
APPROVED BY: D. LE  
ISSUED FOR CONSTRUCTION BY: T. TURZAK  
DATE: 2015/08/13



ENGINEER'S SEAL

**THE CITY OF WINNIPEG**  
Winnipeg WATER AND WASTE DEPARTMENT

SOUTH END WATER POLLUTION CONTROL CENTRE  
SEWPC UPGRADING/EXPANSION PROJECT  
MECHANICAL  
HIGH RATE CLARIFICATION BUILDING  
HVAC - ROOF PLAN

CITY DRAWING NUMBER: 1-0102-MGAD-K603  
SHEET: 00  
REV: 00  
SIZE: A1